

Notice of Meeting:

I hereby give notice that an ordinary meeting of the Otago Peninsula Community Board will be held on:

Date: Thursday 24 June 2021
Time: 10:00 am
Venue: Portobello Bowling Club, Sherwood Street, Portobello

Sandy Graham
Chief Executive Officer

Otago Peninsula Community Board
PUBLIC AGENDA

MEMBERSHIP

Chairperson	Paul Pope	
Deputy Chairperson	Hoani Langsbury	
Members	Lox Kellas	Graham McArthur
	Cheryl Neill	Edna Stevenson
	Cr Andrew Whiley	
Senior Officer	Chris Henderson, Group Manager Waste and Environmental Solutions	
Governance Support Officer	Lauren McDonald	

Lauren McDonald
Governance Support Officer

Telephone: 03 477 4000
Lauren.McDonald@dcc.govt.nz
www.dunedin.govt.nz

Note: Reports and recommendations contained in this agenda are not to be considered as Council policy until adopted.

ITEM	TABLE OF CONTENTS	PAGE
1	Opening	4
2	Public Forum	4
	2.1 Public Forum - Fulton Hogan	4
3	Apologies	4
4	Confirmation of Agenda	4
5	Declaration of Interest	5
6	Confirmation of Minutes	11
	6.1 Otago Peninsula Community Board meeting - 15 April 2021	11
PART A REPORTS (Otago Peninsula Community Board has power to decide these matters)		
7	Transport matters	16
8	Governance Support Officer's Report	17
9	Funding Applications	52
10	Community Plan 2020-2021	54
11	Board Updates	55
12	Councillor's Update	60
13	Chairperson's Report	61
14	Items for Consideration by the Chairperson	62

1 OPENING

Graham McArthur will open the meeting with a reflection.

2 PUBLIC FORUM**2.1 Public Forum - Fulton Hogan****3 APOLOGIES**

At the close of the agenda no apologies had been received.

4 CONFIRMATION OF AGENDA

Note: Any additions must be approved by resolution with an explanation as to why they cannot be delayed until a future meeting.

DECLARATION OF INTEREST

EXECUTIVE SUMMARY

1. Members are reminded of the need to stand aside from decision-making when a conflict arises between their role as an elected representative and any private or other external interest they might have.
2. Elected members are reminded to update their register of interests as soon as practicable, including amending the register at this meeting if necessary.

RECOMMENDATIONS

That the Board:

- a) **Notes/Amends** if necessary the Elected Members' Interest Register attached as Attachment A; and
- b) **Confirms/Amends** the proposed management plan for Elected Members' Interests.

Attachments

	Title	Page
A	Register of Interests as at 17 June 2021	7

Otago Peninsula Community Board Register of Interest					
Name	Date of Entry	Chairperson etc)	Declaration of Interests	Nature of Potential Interest	Proposed Management Plan
Paul Pope (Chairperson)		Board Chairperson/Director	Spiralis Ltd	No conflict identified.	Withdraw from discussion and leave the table if a conflict of interest is identified. Seek advice on actual or potential conflicts of interest prior to the meeting.
		Trustee	Hereweka Harbour Cone Trust	No conflict identified.	Withdraw from discussion and leave the table if a conflict of interest is identified. Seek advice on actual or potential conflicts of interest prior to the meeting.
		President	Dunedin Amenities Society	No conflict identified.	Withdraw from discussion and leave the table if a conflict of interest is identified. Seek advice on actual or potential conflicts of interest prior to the meeting.
		Owner	Residential Property, Portobello	No conflict identified.	Withdraw from discussion and leave the table if a conflict of interest is identified. Seek advice on actual or potential conflicts of interest prior to the meeting.
		Consultant	Upfront Environmental	No conflict identified.	Withdraw from discussion and leave the table if a conflict of interest is identified. Seek advice on actual or potential conflicts of interest prior to the meeting.
Hoani Langsbury (Deputy Chairperson)	24/09/2020	Manager	Otago Peninsula Trust	No conflict identified.	Withdraw from discussion and leave the table if a conflict of interest is identified. Seek advice on actual or potential conflicts of interest prior to the meeting.
		Deputy Chairperson	Dark Skies Advisory Group	No conflict identified.	Withdraw from discussion and leave the table if a conflict of interest is identified. Seek advice on actual or potential conflicts of interest prior to the meeting.
		Trustee	Yellow-eyed Penguin Trust	No conflict identified.	Withdraw from discussion and leave the table if a conflict of interest is identified. Seek advice on actual or potential conflicts of interest prior to the meeting.
		Trustee	Otago Peninsula Biodiversity Group	No conflict identified.	Withdraw from discussion and leave the table if a conflict of interest is identified. Seek advice on actual or potential conflicts of interest prior to the meeting.
		External Issues Komiti	Te Runanga o Otakou	No conflict identified.	Withdraw from discussion and leave the table if a conflict of interest is identified. Seek advice on actual or potential conflicts of interest prior to the meeting.
		TBA	Te Runanga o Otakou-Tangata Tiaki	No conflict identified.	Withdraw from discussion and leave the table if a conflict of interest is identified. Seek advice on actual or potential conflicts of interest prior to the meeting.
		Otakou Alternate	Te Runanga o Ngai Tahu	No conflict identified.	Withdraw from discussion and leave the table if a conflict of interest is identified. Seek advice on actual or potential conflicts of interest prior to the meeting.
		Member	DoC Te Roopu Kaitiaki	No conflict identified.	Withdraw from discussion and leave the table if a conflict of interest is identified. Seek advice on actual or potential conflicts of interest prior to the meeting.
		Committee Member	Ariki Athletics Club	No conflict identified.	Withdraw from discussion and leave the table if a conflict of interest is identified. Seek advice on actual or potential conflicts of interest prior to the meeting.
		Member	Port Otago Technical Committee	No conflict identified.	Withdraw from discussion and leave the table if a conflict of interest is identified. Seek advice on actual or potential conflicts of interest prior to the meeting.
		RMA Commissioner	Environment Canterbury	No conflict identified.	Withdraw from discussion and leave the table if a conflict of interest is identified. Seek advice on actual or potential conflicts of interest prior to the meeting.
		Trustee	Predator Free Dunedin	No conflict identified.	Withdraw from discussion and leave the table if a conflict of interest is identified. Seek advice on actual or potential conflicts of interest prior to the meeting.
		Chairperson	Peninsula Biodiversity Trust	No conflict identified.	Withdraw from discussion and leave the table if a conflict of interest is identified. Seek advice on actual or potential conflicts of interest prior to the meeting.
		Trustee	Wild Dunedin	No conflict identified.	Withdraw from discussion and leave the table if a conflict of interest is identified. Seek advice on actual or potential conflicts of interest prior to the meeting.
	15/04/2021	Member	Technical Advisory Group to the New Zealand Battery Project	No conflict identified.	Withdraw from discussion and leave the table if a conflict of interest is identified. Seek advice on actual or potential conflicts of interest prior to the meeting.
Lox Kellas (Member)	04/11/2016	Member/President	Dunedin RSA	No conflict identified.	Withdraw from discussion and leave the table if a conflict of interest is identified. Seek advice on actual or potential conflicts of interest prior to the meeting.
	24/09/2020	District Vice President	Otago Southland Returned Services Association	No conflict identified.	Withdraw from discussion and leave the table if a conflict of interest is identified. Seek advice on actual or potential conflicts of interest prior to the meeting.

	28/11/2019	Trustee	Dunedin RSA Welfare Trust	No conflict identified.	Withdraw from discussion and leave the table if a conflict of interest is identified. Seek advice on actual or potential conflicts of interest prior to the meeting.
	23/01/2020	Trustee	Southern Heritage Trust	No conflict identified.	Withdraw from discussion and leave the table if a conflict of interest is identified. Seek advice on actual or potential conflicts of interest prior to the meeting.
	24/09/2020	Member	Coastguard Dunedin	Possible conflict if group applies for funding.	Withdraw from discussion and leave the table if a conflict of interest is identified. Seek advice on actual or potential conflicts of interest prior to the meeting.
Graham McArthur (Member)		Managing Director (co-owner)	The Video Factory Ltd (video production company)	No conflict identified.	Withdraw from discussion and leave the table if a conflict of interest is identified. Seek advice on actual or potential conflicts of interest prior to the meeting.
		Director	Speargrass Films Ltd (production company)	No conflict identified.	Withdraw from discussion and leave the table if a conflict of interest is identified. Seek advice on actual or potential conflicts of interest prior to the meeting.
		Director	Multi Stream Media Ltd (shelf company)	No conflict identified.	Withdraw from discussion and leave the table if a conflict of interest is identified. Seek advice on actual or potential conflicts of interest prior to the meeting.
		Owner	Rental property, Dunedin	No conflict identified.	Withdraw from discussion and leave the table if a conflict of interest is identified. Seek advice on actual or potential conflicts of interest prior to the meeting.
		Member	Desalination and Offsetting Water right at Tairoa Head	No conflict identified.	Withdraw from discussion and leave the table if a conflict of interest is identified. Seek advice on actual or potential conflicts of interest prior to the meeting.
		Owner	Residential Property, Portobello	No conflict identified.	Withdraw from discussion and leave the table if a conflict of interest is identified. Seek advice on actual or potential conflicts of interest prior to the meeting.
		Member	Portobello Boat Club	Possible conflict if group applies for funding.	Withdraw from discussion and leave the table if a conflict of interest is identified. Seek advice on actual or potential conflicts of interest prior to the meeting.
		Member	Caselberg Trust	Possible conflict if group applies for funding.	Withdraw from discussion and leave the table if a conflict of interest is identified. Seek advice on actual or potential conflicts of interest prior to the meeting.
		Member	Hereweka-Harbour Cone Trust	No conflict identified.	Withdraw from discussion and leave the table if a conflict of interest is identified. Seek advice on actual or potential conflicts of interest prior to the meeting.
Cheryl Neill		Teacher	Portobello School	No conflict identified.	Withdraw from discussion and leave the table if a conflict of interest is identified. Seek advice on actual or potential conflicts of interest prior to the meeting.
		Shop worker	Portobello Dairy	No conflict identified.	Withdraw from discussion and leave the table if a conflict of interest is identified. Seek advice on actual or potential conflicts of interest prior to the meeting.
		Member	Portobello Bowling Club	Possible conflict if group applies for funding.	Withdraw from discussion and leave the table if a conflict of interest is identified. Seek advice on actual or potential conflicts of interest prior to the meeting.
Edna Stevenson (Member)	24/09/2020	President	Portobello Library	Possible conflict if group applies for funding.	Withdraw from discussion and leave the table if a conflict of interest is identified. Seek advice on actual or potential conflicts of interest prior to the meeting.
	24/09/2020	Member	Portobello Bowling Club	Possible conflict if group applies for funding.	Withdraw from discussion and leave the table if a conflict of interest is identified. Seek advice on actual or potential conflicts of interest prior to the meeting.
		Vice Chairperson	Te Rauone Beach Coast Care Committee	Possible conflict if group applies for funding.	Withdraw from discussion and leave the table if a conflict of interest is identified. Seek advice on actual or potential conflicts of interest prior to the meeting.
Andrew Whiley (Council Representative)	17/11/2016	Owner/Operator	Whiley Golf Inc and New Zealand Golf Travel Ltd	No conflict identified.	Withdraw from discussion and leave the table. If the meeting is in confidential leave the room. Seek advice prior to the meeting.
		Director/Shareholder 22 May 2017	Estate of Grace Limited	No conflict identified.	Withdraw from discussion and leave the table. If the meeting is in confidential leave the room. Seek advice prior to the meeting.
		Trustee	Japek (Family Trust) - Property Ownership - Dunedin	Duties to Trust may conflict with duties of Council Office.	Withdraw from discussion and leave the table. If the meeting is in confidential, leave the room. Seek advice prior to the meeting.
		Member	Otago Golf Club	No conflict identified.	Withdraw from discussion and leave the table. If the meeting is in confidential leave the room. Seek advice prior to the meeting.
		Member	Dunedin South Rotary Club	No conflict identified.	Seek advice prior to the meeting if actual or perceived conflict of interest arises.
		Board Member	New Zealand Professional Golfers Assn	No conflict identified.	Seek advice prior to the meeting if actual or perceived conflict of interest arises.

		Member	Institute of Directors	No conflict identified.	Seek advice prior to the meeting if actual or perceived conflict of interest arises.
		Member	National Party	No conflict identified.	Seek advice prior to the meeting if actual or perceived conflict of interest arises.
		Chairman	Volunteering Otago	No conflict identified.	Seek advice prior to the meeting if actual or perceived conflict of interest arises.
		Member	Otago Peninsula Communtiy Board (Council appointment)	No conflict identified.	Seek advice prior to the meeting if actual or perceived conflict of interest arises.
		Member	Grow Dunedin Partnership (Council appointment - allternate)	No conflict identified.	Seek advice prior to the meeting if actual or perceived conflict of interest arises.
		Member	Dunedin Otaru Sister City Society (Council Appointment)	No conflict identified.	Seek advice prior to the meeting if actual or perceived conflict of interest arises.
		Member	Dunedin Public Art Gallery Society (Council Appointment)	No conflict identified.	Seek advice prior to the meeting if actual or perceived conflict of interest arises.
	25/08/2020	Member	Puketai Residential Centre Liaison Committee (Council Appointment)	No conflict identified.	Seek advice prior to the meeting if actual or perceived conflict of interest arises.
		Member	Dunedin Community House Executive Committee	Potential grants recipient	Withdraw from discussion and leave the table. If the meeting is in confidential, leave the room. Seek advice prior to the meeting.
	19/02/2021	Deputy Chairperson	Dunedin Community House Executive Committee	Potential grants recipient	Withdraw from discussion and leave the table. If the meeting is in confidential, leave the room. Seek advice prior to the meeting.

CONFIRMATION OF MINUTES

OTAGO PENINSULA COMMUNITY BOARD MEETING - 15 APRIL 2021

RECOMMENDATIONS

That the Board:

- a) **Confirms** the public part of the minutes of the Otago Peninsula Community Board meeting held on 15 April 2021 as a correct record.

Attachments

	Title	Page
A 	Minutes of Otago Peninsula Community Board meeting held on 15 April 2021	12

Otago Peninsula Community Board

MINUTES

Minutes of an ordinary meeting of the Otago Peninsula Community Board held in the Grants Braes Football Clubrooms, Tomahawk on Thursday 15 April 2021, commencing at 10:40 a.m.

PRESENT

Chairperson	Paul Pope	
Deputy Chairperson	Hoani Langsbury	
Members	Lox Kellas	Graham McArthur
	Cheryl Neill	Edna Stevenson
Governance Support Officer	Lauren McDonald	

1 OPENING

Paul Pope opened the meeting with a reflection on the current dry ground conditions on the peninsula and likened it to the current economic climate due to Covid-19.

He also reflected ahead of the ANZAC Day commemorations of the contribution of the New Zealand servicemen and women and saw this as providing an opportunity for individuals to think of what they can do for their communities.

2 PUBLIC FORUM

Julian Phillips, Team Leader Public Transport, Otago Regional Council provided an update on the solar powered electronic bus stop (E-stop) trial in place at Macandrew Bay. He advised that the feedback to date on the site had been very positive.

In response the Board's safety concerns of overcrowding on the Peninsula bus service in the afternoons. Mr Phillips advised that the ORC contractor had been asked to check on the ability to supply additional buses for the route (or part) where overcrowding was an issue at high use times. He added, that subject to funding, additional buses may be trialled with the contractor to establish if additional buses may be required due to capacity.

Dean Williamson from the Tomahawk Regenerative Group updated the Board community progress on recreation area improvements in the Tomahawk. He advised the regenerative group were looking for a collaborative approach with various community groups, ORC, DCC and DoC to develop a 'whole of community' picture for the facilities wanted at Tomahawk. He asked for the involvement of the Community Board in the discussion.

Paul Pope advised a community meeting would be held on Wednesday 21 April at the Domain Hall in Tomahawk for the community to come together and discuss issues affecting the area. He advised this would also assist the Board to gain feedback from the community for inclusion in the Board's submission to the DCC 10 Year Plan and the ORC Long Term Plan.

3 APOLOGIES

Moved (Chairperson Paul Pope/ Lox Kellas):

That the Board:

Accepts the apology from Cr Andrew Whiley.

Motion carried (OPCB/2021/029)

4 CONFIRMATION OF AGENDA

Moved (Chairperson Paul Pope/ Lox Kellas):

That the Board:

Confirms the agenda with the following alteration:
That consideration of items 7, 8, 10 and 11 be dealt with at a later meeting.

Motion carried (OPCB/2021/030)

5 DECLARATIONS OF INTEREST

Members were reminded of the need to stand aside from decision-making when a conflict arose between their role as an elected representative and any private or other external interest they might have.

Hoani Langsbury declared an interest as a member of the Technical Advisory Group to the New Zealand Battery Project.

Moved (Chairperson Paul Pope/ Edna Stevenson):

That the Board:

- a) **Amends** the Elected Members' Interest Register attached and
- b) **Amends** the proposed management plan for Elected Members' Interests.

Motion carried (OPCB/2021/031)

6 CONFIRMATION OF MINUTES

6.1 OTAGO PENINSULA COMMUNITY BOARD MEETING - 25 MARCH 2021

Moved (Chairperson Paul Pope/Deputy Chairperson Hoani Langsbury):

That the Board:

Confirms the minutes of the Otago Peninsula Community Board meeting held on 25 March 2021 as a correct record.

Motion carried (OPCB/2021/032)

PART A REPORTS

9 OTAGO PENINSULA COMMUNITY BOARD 10 YEAR PLAN SUBMISSION 2021-2031

Discussion was held on the priorities as set out in the Board's community plan including:

- Public toilets at MacAndrew Bay beach to be the Board's priority site in the 10YP submission also seeking an assurance from Council on engagement with the mana whenua and local community on the placement of any new site.
- Kerbside - 3 bin option.
- Transport priority was for the completion of section 14 of the peninsula connection project (Harwood to the Otakou Fisheries Wharf) as improvements are needed for road safety.
- Biodiversity interaction and mitigation measures e.g. protection of wildlife

Moved (Member Lox Kellas/Cheryl Neill):

That the Board:

- a) **Delegates** the Chairperson to draft the Otago Peninsula Community Board's submission to the DCC 10 Year Plan 2021-2031 and submit on the Board's behalf.

Motion carried (OPCB/2021/033)

12 OTAGO PENINSULA COMMUNITY BOARD SUBMISSION TO THE ORC LTP 2021-2031

Priorities for inclusion in the Board's submission to the ORC were discussed.

Moved (Chairperson Paul Pope/ Edna Stevenson):

That the Board:

- a) **Delegates** the Chairperson to draft the submission and submit on the Board's behalf to the Otago Regional Council's LTP 2021-2031 Plan.

Motion carried (OPCB/2021/034)

13 ITEMS FOR CONSIDERATION BY THE CHAIRPERSON

Hoani Langsbury asked if Council would be willing to provide a graffiti removal kit to the Board for its use to remove graffiti on historic structures on the peninsula.

Transport Manager's contact details will be provided to progress this request.

Moved (Chairperson Paul Pope/ Lox Kellas):

That the Board:

Agrees to cover the cost of a graffiti removal kit, if required, for use on the peninsula.

Motion carried (OPCB/2021/035)

The meeting concluded at 12.15pm.

.....
CHAIRPERSON

PART A REPORTS

TRANSPORT MATTERS

Jeanine Benson, Manager Transport, Glen O'Connor, DCC Transport contractor and Kim Everett, Engagement and Communications Advisor – Major Projects will be in attendance to discuss transport issues on the Otago Peninsula, including feedback/updates on:

- Cycleway Macandrew Bay
- Back Bay road conditions
- Papanui and Hoopers Inlet roads
- Peninsula Connection Project – Open Day for Section 4 – Sunday 27 June.
- Notification of closure of a legal road
- Unformed public road issues (590 Portobello Road)
- Signage at Wellers Rock
- LTP submission re subsidence

Attachments

There are no attachments for this report.

GOVERNANCE SUPPORT OFFICER'S REPORT

Department: Civic

EXECUTIVE SUMMARY

1 This report is to inform the Otago Peninsula Community Board of activities relevant to the Board area including:

- Project Fund
- Updates
- Board's submissions to the ORC LTP, DCC 10YP DCC Destination Dunedin Plan and the ORC RPTP
- What DCC is Currently consulting on

RECOMMENDATIONS

That the Board:

- a) **Notes** the Governance Support Officer's Report

PROJECT FUND

2 The balance of funds as at 17 June 2021 is \$1,388.40

3 The following expenditure has been made to date for the 2020/21 financial year.

Meeting Date	Amount	Recipient/Purpose
06 August 2020	\$1734.00	Save the Otago Peninsula (STOP) to assist with project work for the control of pest plants on the Otago Peninsula
06 August 2020	\$500.00	Otago Peninsula Artists (OpenArt) in support of "Lets Talk Peninsula" and "With Love from the Peninsula" exhibitions.
06 August 2020	\$375.00	Otago Lions Club – replacement defibrillator battery charge pack
24 September 2020	\$1,340.00	Quarantine Island Kamau Taurua Community – smoke alarms
24 September 2020	\$500.00	Board Project – Cape Saunders Emergency buoy and signage
12 November 2020	\$300.00	Josephine Tarasiewicz - Scholarship funding for attendance at University of Otago "Hands on at Otago" week-long course.
12 November 2020	\$1700.00	Scott Hall Committee for the purchase of a defibrillator for the Harwood community
12 November 2020	30.00	Otago Community Broadcasters Society (OAR FM) group membership through to 30 June 2021.
18 February 2021	\$300.00	Kaiya Casswell - Scholarship funding for attendance Outward Bound Course
18 February 2021	\$240.00	OAR FM "Round the Boards" radio programme for 2021

25 March 2021	\$2,397.75	Otago Peninsula Biodiversity Trust – support of changeover of electrical wiring to single phase power at the OPBT office.
25 March 2021	\$400.00	Broad Bay Community Centre – funding for quarterly community newsletter for 2021/2022.
25 March 2021	\$2,500.00	Broad Bay Community Centre – funding for electrical work for the Broad Bay Hall
Sub total	\$12,316.75	Total funds spent to date
TOTAL	\$1,388.40	(balance of funds remaining until 30 June 2021)

UPDATES

Parks and Recreation Services Update

- 4 Beach Signage
The signage for a number of beach spaces has been assessed in an effort to increase compliance to the Reserves and Beaches Bylaw as well as refresh and improve wayfinding, wildlife or other relevant information. Tomahawk, Warrington and Waikouaiti beaches were identified as priority beaches.

Transport Updates

- 5 Speed Review
The Regulatory Subcommittee will meet on 6 July 2021 to consider the Speed Limit Bylaw Review for Amendments 10 and 11. Their recommendations will then be presented for adoption at the 27 July 2021 Council meeting.
- 6 Roadside Vegetation
The roadside vegetation contract has been awarded to Whitestone Contractors. The contract has strict conditions with financial implications on delivery of the contract so it is anticipated that there will be significant improvements in their performance.
- 7 Roadworks Schedule
Information on current notified road closures and the roadworks schedule (a weekly list of programmed works) for Council's maintained roads is available on the DCC website via these links: <https://www.dunedin.govt.nz/news-and-events/public-notice/roadworks-schedule> and <https://www.dunedin.govt.nz/news-and-events/public-notice/notified-road-closures>.

OPCB Board submissions

- 8 Copies of the Board's Submissions to the ORC Long Term Plan; DCC 10 Year Plan 2021- 2031 DCC Destination Dunedin Plan and the ORC Regional Transport Plan attached to the report for the member's information.

2021 Representation Review

- 9 The Representation Review panel has been appointed. Over the next month or so they will be meeting with Councillors and Community Boards to get initial thoughts on current and future representation.

- 10 A survey is also being finalised which will be available on line and in paper for the public to complete. Members of the panel will also attend various events across the city to obtain feedback to help inform their initial proposal which is likely to be presented to Council on 30 June 2021.

• **Currently Being Consulted on by Dunedin City Council**

- 11 The Dunedin City Council is currently consulting on the following which may be of interest to the Board and the community:
Plan Change – DIS-2021-1 (Variation 2) Further Submissions

1 <https://www.dunedin.govt.nz/council/district-plan/2nd-generation-district-plan/plan-change-dis-2021-1-variation-2CC>

2

- 12 **Keeping of Animals (excluding Dogs) and Birds Bylaw review** – submissions close on Wednesday 7 July 2021. For ease of reference the current policy is Attached to Item 6 of the Agenda. <https://www.dunedin.govt.nz/council/currently-consulting-on/current-consultations/keeping-of-animals-excluding-dogs-and-birds-bylaw-review>

Board members (or members of the public) wishing to advise Council of any operational issues or concerns, e.g. potholes, burst pipes, overgrown vegetation etc are reminded to ring the DCC Customer Services Agency on 03 477-4000, or email on dcc@dcc.govt.nz. For non-urgent matters contact council via the online "Fix it form" <https://www.dunedin.govt.nz/do-it-online/report/fix-it-form>

If issues and concerns are not dealt with in a timely manner, Board members should contact either the Governance Support Officer or the Senior Staff Member appointed to the Board.

Signatories

Author:	Lauren McDonald - Governance Support Officer
Authoriser:	Clare Sullivan - Team Leader Civic

Attachments

	Title	Page
↓A	OPCB Submission to DCC 10YP 2021-2031	21
↓B	OPCB Submission to the ORC LTP 2021	34
↓C	OPCB Submission to the DCC Destination Plan	40
↓D	OPCB to the ORC Regional Public Transport Plan	49

SUMMARY OF CONSIDERATIONS

Fit with purpose of Local Government

This decision enables democratic local decision making and action by, and on behalf of communities.

SUMMARY OF CONSIDERATIONS
Fit with strategic framework

	Contributes	Detracts	Not applicable
Social Wellbeing Strategy	<input checked="" type="checkbox"/>	<input type="checkbox"/>	<input type="checkbox"/>
Economic Development Strategy	<input type="checkbox"/>	<input type="checkbox"/>	<input checked="" type="checkbox"/>
Environment Strategy	<input type="checkbox"/>	<input type="checkbox"/>	<input checked="" type="checkbox"/>
Arts and Culture Strategy	<input type="checkbox"/>	<input type="checkbox"/>	<input checked="" type="checkbox"/>
3 Waters Strategy	<input type="checkbox"/>	<input type="checkbox"/>	<input checked="" type="checkbox"/>
Spatial Plan	<input type="checkbox"/>	<input type="checkbox"/>	<input checked="" type="checkbox"/>
Integrated Transport Strategy	<input checked="" type="checkbox"/>	<input type="checkbox"/>	<input type="checkbox"/>
Parks and Recreation Strategy	<input checked="" type="checkbox"/>	<input type="checkbox"/>	<input type="checkbox"/>
Other strategic projects/policies/plans	<input type="checkbox"/>	<input type="checkbox"/>	<input checked="" type="checkbox"/>

Māori Impact Statement

There are no known implications for tangata whenua

Sustainability

There are no implications for sustainability.

LTP/Annual Plan / Financial Strategy /Infrastructure Strategy

There are no implications.

Financial considerations

There are no financial implications.

Significance

This decision is considered low significance in terms of the Council's Significance and Engagement Policy.

Engagement – external

There has been no external engagement.

Engagement - internal

Internal engagement has occurred with appropriate staff members.

Risks: Legal / Health and Safety etc.

There are no risks.

Conflict of Interest

There are no known conflicts of interest.

Community Boards

The report provides information on activities in or relevant to the Board area.

Otago Peninsula Community Board **Long Term Plan Submission to the Dunedin** **City Council** **2021 – 2031**



Submission to the Dunedin City Council Long Term Plan 2021-2031
Otago Peninsula Community Board

Executive Summary

Details	Est. Cost	When in 2021-31 10 year plan	Justification
Peninsula Connection Project Harington Pt Completion of roading and landscaping. Footpath creation and upgrades.	Within the existing Annual Plan	2022-2023	Public road safety and ongoing community feedback through public forums and submissions received requesting this.
Climate Change Preparation and improvements to infrastructure in preparation for ongoing climate		2021-2031	The effects of climate change on the infrastructure, landscape and biodiversity will be dramatic in coming years.
Peninsula Connection Interpretation and Art Trail	\$150,000	2022-2025	This adds value to the existing Peninsula Connection Project
Portobello/Harington Point Road Ecological Management & Sea lion management	\$125,000	2022-2026	Invasive weed species have devalued native areas of vegetation
Habitat Restoration and Species Management Support in Emissions	\$100,000/Annum	2021-2031	The Otago Peninsula is under-resourced in wildlife and biodiversity investment
Information Signage with International Symbols for Townships	\$150,000	2022-2024	This adds value to the existing Peninsula Connection Project
Harington Point Battery Restoration	\$100,000	2025-2028	An important historical site to iwi and the wider city
Te Umu Kiri – Wellers Rock Improvements to the carparking, safety, interpretation and cultural management of a highly significant historical site to the area and region.		2021-2023	Te Runaka Otakou have been distressed at the treatment of this area by users and visitors, especially the loss of the traditional sand isthmus.
Impacts of Tourism on our Economy and Environment Research	\$50,000	2022-2025	The impact of Covid 19 needs greater levels of research around recovery
Community Wide Improvements to Street Drainage and Footpaths Including Sealing of gravel roads of Back Bays		2021-2031	Changes in residential construction and high rainfall events due to climate change
Harwood Footpath and Wall Repairs		2022-2026	Changes in residential construction and high rainfall events due to climate change
Greenacres Street Drainage		2022-2026	Changes in residential construction and high rainfall events due to climate change
Tomahawk Road Safety Improvements		2021-2022	Increases in residential building is adding pressure to road safety in the community
Tomahawk & Smaills Coastal Protection		2022-2031	Dune areas are critical to the protection of the community and landscape

Submission to the Dunedin City Council Long Term Plan 2021-2031
Otago Peninsula Community Board

Macandrew Bay Beach Public Toilet <i>Installation of a toilet at the beach area</i>		2021 -2023	<i>The current hall toilets require a dangerous crossing from the beach area</i>
Tomahawk Beach Public Toilets		2021 – 2023	<i>The beach has grown in popularity as a destination area</i>
Taiaroa Heads Public Toilets		2021-2024	<i>External public toilets would improve the visitor experience at peak times</i>
Okia Public Toilet		2021 -2024	<i>An extremely isolated area where a public toilet has been part of the management plan for a significant period</i>
Harwood Hall Public Toilet		2021 -2024	<i>An increasingly popular area with visitors that has also had issues with freedom campers</i>
Otago Peninsula Tracks Network <i>The track network offers a significant recreational and tourism asset that would diversify business and visitor opportunities.</i>		2021-2026	<i>Signage, handrails, boardwalks and markers are now nearly 30 years old and have deteriorated where they are a safety issue.</i>

Introduction

The Otago Peninsula Community Board Long Term Plan Submission identifies key projects and issues for the Otago Peninsula for the next ten years. Like all Council projects they are reviewed and refined every three years in the Annual Plan process.

The purpose of the Otago Peninsula Community Board's Submission is identify key long term projects of significance to the Peninsula community. It signals proposed projects to the Dunedin City Council (DCC) with the ultimate goal that DCC and the Board work in partnership to ensure the current and future needs of the community for good quality local infrastructure, local public services, and performance of regulatory functions are

met in a way that is cost effective for households and businesses.

This plan provides information about our Community Board and integrates the needs of the Peninsula with the city's vision and strategic framework.

The Otago Peninsula is a diverse area covering the residential area of Tomahawk, the townships sites of Macandrew Bay,



Broad Bay, Portobello. Harwood and Otakou as well as the rurally isolated areas of the "back bays" of Hooper's and Papanui Inlets. With this in mind it has been important to identify specific issues for each area as representative of the people who live there.

Sumbitted on Belhalf of the Otago Peninsula Community Board

Paul Pope – Chairman

Submission to the Dunedin City Council Long Term Plan 2021-2031
Otago Peninsula Community Board

Details of the Boards' Submission

1. Transport – A Connected City



The Peninsula Connection

This project has seen a significant change in safety and access for a wide range of users. However, the unfunded section from Ellison Road to the Otakou Fisheries wharf is of major concern to the community in terms of safety, accessibility and equity. This unfunded area is the narrowest and probably the most unsafe area of the whole project. It is also the shortest being a mere 620 metres of construction work. With the future development of Te Rauone Beach and Wellers Rock the need for better accessibility in this area has become paramount and strategically important.

Submission – *The Peninsula Community Board submits that the Council include this unfunded section of the Connection Project in the LTP as a matter of urgency for the benefit and safety of locals and visitors alike.*

Safety Improvements for Pukehiki, Smaills Beach and Tomahawk



Currently Pukehiki has no pedestrian footpaths and no infrastructure that allows safer speeds and security for users on foot or cycling. The intersection of Highcliff and Camp has also been problematic and dangerous for locals and visitors alike.

Submission – The Board submits that funding for better pedestrian safety, speed reduction and improvements to the troublesome Camp Rd/Highcliff Rd intersection be allocated to this area.



The Smaills Beach section of Tomahawk Road has become a site for hooning, burn outs and anti social behaviour. Despite the best efforts of the NZ Police to catch offenders this problem has worsened over recent years to the exasperation of locals.

Submission – The Board submits that this area needs speed control in the form of judder bars or other infrastructure to discourage the anti social behaviour and give locals peace of mind.



Tomahawk Road has been problematic for the community for some years with speed and poor behaviour, especially at night. The other issue is the increase in traffic with the development of 69 lot subdivision in Centre Road. The City Council began a process of consultation for curb protrusions and judder bars in the area, but stopped the project due to funding constraints.

Submission – The Board submits that this work be funded to provide better safety and ambience to the local community in wake of future residential developments in the area.



Climate Change Resilience

Predictions of greater extremes of rainfall due to climate change have been borne out in the 2015 and 2017 events on the Otago Peninsula. Slipping and flooding have taken their toll on the roading network and will continue to do so in the future.

Submission – The Board seeks future funding for ensuring the resilience of our scenic and important “back bays” areas of Papanui and Hoopers Inlets. The Board also seeks future funding for better street drainage, curb and channel and guttering across the whole Community to cope with high rainfall events

Streetwide Improvements to Footpaths and Street Infrastructure



Many of the streets of the residential areas of the Otago Peninsula have little or no pedestrian access and poor street drainage. As our community grows with housing development and the announced changes in the 2GP Housing Provisions, they are and will become more and more difficult places to walk safely to recreational areas, schools and between neighbouring homes.

Submission – The Board submits that more development and improvement of footpaths and residential drainage is required in areas across the Peninsula community to accommodate new development, safety and accessibility.

Information Signage with International Symbols for Townships



The business community on the Otago Peninsula is pivotal to the tourism and visitor market for our region and city. However, our information signage regarding accommodation services, eating establishments, services and attractions is poor. In the post Covid 19 economy we need all efforts we can provide to support businesses as they redefine themselves in the current market.

Submission to the Dunedin City Council Long Term Plan 2021-2031
Otago Peninsula Community Board



Submission – The board submits that the City Council invest in more visible place based signage denoting the place, facilities, attractions and services available in township areas of the Otago Peninsula to support business and groups. The Board also requests that township and place name signage be bilingual, using the English and Te Reo versions to give deeper cultural and historical meaning to our community.

Harwood Road Stabilisation – Stepney Avenue and Tidewater Drive



Currently the seawall at Tidewater Drive is in urgent need of repair and upgrading to protect the road and houses from flooding. Similarly, in Stepney Avenue where the road and sea wall have become undermined and eroding. In 2015 the City Council did begin to address the issue by dumping rocks along the wall in Micheal Avenue but since then nothing has been done and the problem has worsened.

Submission – The Board submits that Tidewater Drive and Stepney Avenue need urgent attention to protect the roading asset in this area along with associated housing.

2. A Thriving and Diverse Economy



The Impacts of Tourism on our Economy and Environment

The Otago Peninsula represents \$180 million of ecotourism revenue to the Dunedin economy. In a pre Covid 19 context that has significantly altered with the drop in foreign tourists. It is unknown just how well or how long the tourism sector will recover from the effects of the pandemic. There is a significant opportunity to add value and understanding to the sector by increasing the level of financial and research support on the environmental, societal and economic effects of tourism on the Peninsula.

Submission – The Board submits that there is a need to add value to the sector by developing ongoing reserach of the positive and negative effects of the tourism sector on the Otago Peninsula. This research would assist the community, business and the Council to make better decisions around infrastructure, conservation, promotion and climate change for the Peninsula.

Greenhouse Emissions and the Effects of Carbon from the Tourism Sector



The Otago Peninsula is a biodiversity hotspot of national and international significance. The ecotourism sector is a significant part of both business and ecological management of many endangered species. However, the ecotourism sector heavily is reliant on high carbon emission transportation such as air, bus, camper van and motor car travel. At the same time the City Council is “land rich” in terms of recreational and ecological space on the Peninsula suitable for the development of tree planting mitigation projects. These would create measurable impacts on tourist carbon and provide important strengthening of threatened habitat important to the taoka species of our area.

Submission – The Board submits that the City Council plant 100,000 trees on the Otago Peninsula over the next 10 years to assist in mitigating the effects of tourism carbon emissions and support habitat creation for critical species on the Otago Peninsula.

3. A Sustainable City with Healthy and Treasured Natural Environments

Habitat Management and Species Support



The promotion of Dunedin as “the wildlife capital of New Zealand” is an enviable title but there must be a continued vigilance and work to maintain that mantle. The Otago Peninsula is fortunate to have many hard working community groups and individuals who dedicate their time and hard work to sustain ecological restoration and conservation here. However, species such as the Hoiho face extinction on the mainland in a matter of a few years if we are not able to remove predators, repair habitat and provide the best opportunities for breeding. The City Council has a

leadership and landowners role to play in this work but must invest more capital into such works in partnership with agencies and the community to halt further decline in our taoka and our landscape.

Submission – The Board submits that the City Council must increase its investment in its reserve lands, community groups and agency partnerships on the Otago Peninsula to protect vulnerable species and habitats from further decline.

Portobello and Harrington Point Road Ecological Management



Roadside Weed Control

The City Council has legal obligations under the Otago Regional Council “Regional Pest Management Plan 2019” to control weeds on its land, including its roadsides. The Otago Peninsula have active individuals and groups undertaking critical weed control on public and private lands across our area. However, there must be a co-ordinated approach to Council weed control on roadsides to ensure gains made by locals are not lost. The Council need to look more closely at the control work that is undertaken as part of its roadside contracts and take a more ecological approach to such works. In doing this the work would compliment the Peninsula, create a genuine buffer in the landscape and be more sustainable in its herbicide use.

Submission – The Board submits that an ecological approach should be taken in the weed management of these areas to ensure greater effectiveness and delivery of sustainable land management practices that enhance native biodiversity. Staff need to be resourced more appropriately to achieve better long term results than we see now.

Sea Lion Road Safety and Species Support Through Transportation



The continual growth of the NZ Sea lion population on the Otago Peninsula has been one of our conservation success stories. However the interactions between people and sea lion can be a difficult one to manage at times. Being wild animals they will roam where they are comfortable for shelter food and company. Increasingly, this leads to the need for management, particularly around public roads on the Otago Peninsula. The City Council do their best, but the Transportation Section of Council are not resourced for signage,

temporary fencing and occasionally road closures.

Submission – The Board submits that the City Council should allocate \$25,000/annum to its Transportation Section to deal with minor traffic works and signage that keep sea lions and motorists safe.

Tomahawk and Smaills Beach Dune Conservation



Both dune complexes are significant to biodiversity, recreation and protection from future sea level rise. However, basic management and maintenance of access, vegetation and restoration would greatly assist this area to be more functional and effective as a landscape and protection asset.

Submission – The Board submits that this area of coastal habitat requires a management and implementation plan that complements community work and aspirations for the wider benefit of the coastal environment.

Te Umu Kuri (Wellers Rock Carpark)



Te Runaka Otakou have voiced concern over the management of this area as an important historical site. Poor behaviour of vehicles and freedom camping have seen significant pressure on the small beach. The area is also a traditional boat launching area. Work was started with Council staff in 2020 to limit the vehicle access on the beach and negotiations begun for the development of a carpark on leased land. This process has taken some time, but the issue grows increasingly urgent.

Submission – The Board submits that staff are adequately resourced to complete the lease process and carpark to lessen damage to this historic area.

Harrington Point Bayttery Restoration Project

Representatives of the Board have made significant progress with military restoration experts and the Maori owners of the land for a restoration of the area as a key historical and cultural site.

Submission – The Council support the restoration of the historically important Harrington Point gun emplacements site.

4. A Creative City with a Rich and Diverse Arts and Cultural Scene



Investigation and Development of a Peninsula Art and Interpretation Trail

One of the issues facing the Peninsula Connection Project is understanding both the terrestrial, aquatic, historical and cultural values. It's a blank canvas that has no detail to the stories that make the Peninsula the place that it is. This is not only confusing but limits the experience visitors have when using the opportunities the Connection creates. There is significant value in providing interpretation and investing in public art works that tell the story of our area. It also has the opportunity to provide better information on travel times, behaviour and visitor attractions while using the Connection asset.

Submission – The Board submits that the City Council investigate and invest in terrestrial, aquatic, historical and cultural interpretation & public art for the purposes of tell the Peninsula's story.

5. An Active City with Quality and Accessible Recreational Spaces and Opportunities

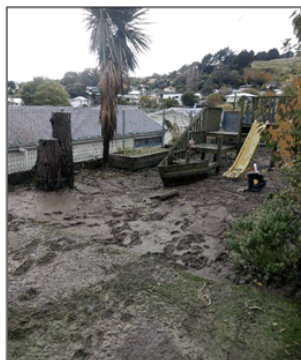
Otago Peninsula Track Network



The Otago Peninsula track network is a significant recreational asset that provides a coastal and terrestrial linkage between St Clair and Victory Beach. It encompasses significant areas of the Peninsula such as Sandfly Bay, Boulder Beach, Sandymount and Hereweka Harbour Cone. However, the signage, hand rails, marker posts, and boardwalks on parts of the network were first installed in the mid 1990's. Subsequently, they have fallen into disrepair due to a lack of maintenance and care. This has led to a devaluing of the Peninsula track experience for users and a missed opportunity to diversify the visitor market.

Submission – The Board submits that the Otago Peninsula Track Network is a world class asset that has been allowed to degrade and depreciate due to a lack of maintenance and care. This asset requires capital investment and maintenance to see it reach its real potential.

6. A Healthy City with Reliable and Quality Water, Wastewater and Stormwater Systems



Conway & Greenacres Street Flooding

In 2015 and 2017 the Conway and Greenacres Street of Macandrew Bay area was badly flooded damaging some houses and destroying part of the Playcentre twice. Work was undertaken on the Conway Street creek but a wider project was planned to pipe water from Conway Street and Greenacres Street. However, that work never eventuated despite the flooding propensity of this area remaining. This is a high volume catchment area that requires appropriate infrastructure to safeguard peoples homes and council roads.

Submission – The Board submits that the City Council invest in the pipe and drainage work from Conway Street first presented to the Board four years ago for benefit of the residents in this area.

7. Public Toilets on the Otago Peninsula



Public toilets are always a constant issue in community's and the Otago Peninsula is no different. However, its location in the visitor market sees high demand for public toilets across the area.

Macandrew Bay - In Macandrew Bay the problem is the location of the toilets at the hall rather than at the beach recreation area. It is a difficult crossing point on a busy section of road to get from the beach to the hall and a toilet at the beach site would be safer and more convenient.

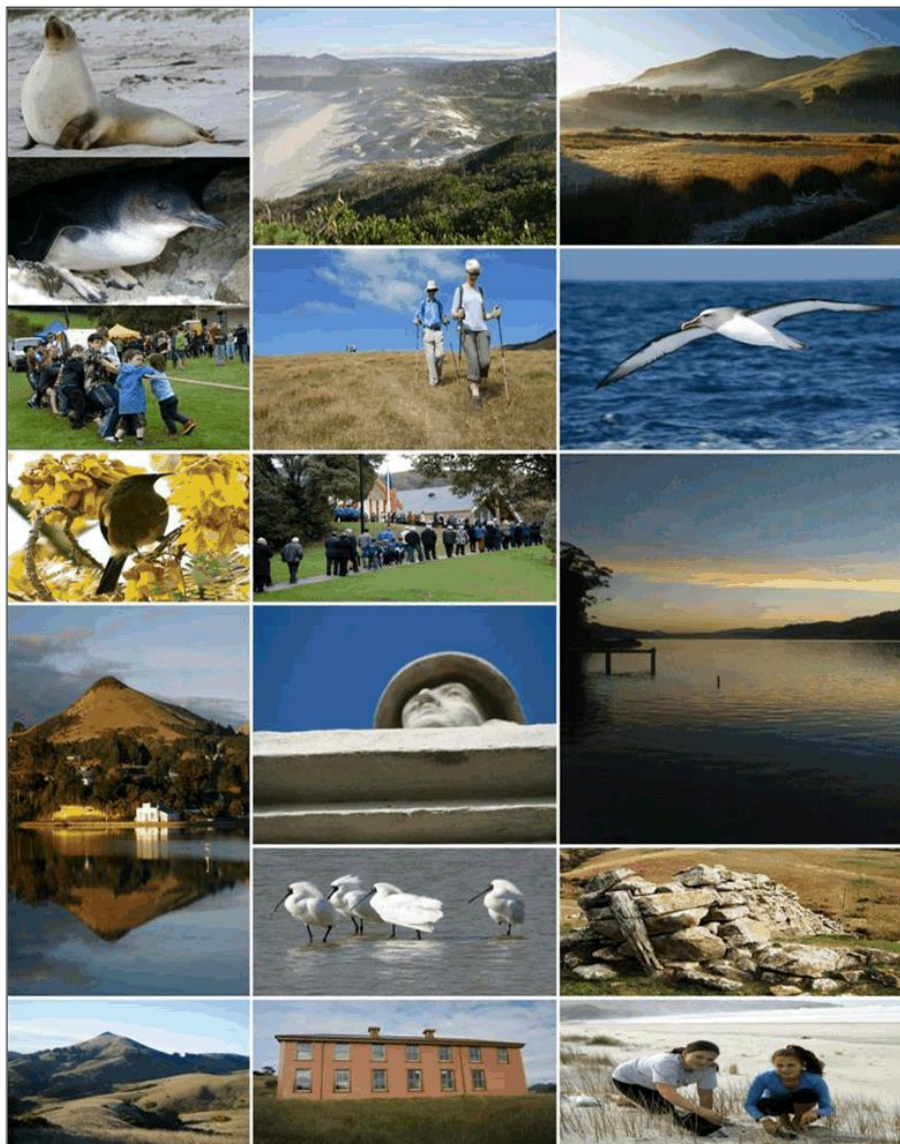
Tomahawk Beach - There are no public toilets at Tomahawk at all, and this area grows in popularity as a visitor area for recreation and viewing biodiversity close to the city.

Taiaroa Head – High level visitor demand places strain on existing assets at this location.

Okia Reserve Public Toilet – This is a highly isolated reserve area in Papanui Inlet that has problems with inappropriate activity for some time. A toilet is proposed in the Okia Management Plan but has never been actioned.

Harwood Hall Public Toilet – the area has grown in popularity with visitors and there are no available toilets in this area.

Otago Peninsula Community Board
Long Term Plan Submission to the Otago
Regional Council
2021 – 2031



Submission to the Otago Regional Council Long Term Plan 2021-2031
Otago Peninsula Community Board

Introduction

The Otago Peninsula Community Board Long Term Plan Submission identifies key projects and issues for the Otago Peninsula for the next ten years. Like all Council projects they are reviewed and refined every three years in the Regional Council's Annual Plan process.

The purpose of the Otago Peninsula Community Board's Submission is identify key long term projects of significance to the Peninsula community. It signals proposed projects to the Otago Regional Council (ORC) with the ultimate goal that ORC and the Board work in partnership to ensure the current and future needs of the community for good quality local infrastructure,

local public services, and performance of regulatory functions are met in a way that is cost effective for households and businesses.

This plan provides information about our Community Board and integrates the needs of the Peninsula with the city's vision and strategic framework.

The Otago Peninsula is a diverse area covering the residential area of



Tomahawk, the townships sites of Macandrew Bay, Broad Bay, Portobello. Harwood and Otakou as well as the rurally isolated areas of the "back bays" of Hooper's and Papanui Inlets. With this is mind it has been important to identify specific issues for each area as representative of the people who live there.

Sumbitted on Belhalf of the Otago Peninsula Community Board

Paul Pope – Chairman

Submission to the Otago Regional Council Long Term Plan 2021-2031
Otago Peninsula Community Board

Details of the Boards' Submission

1. Tomahawk Lagoon



Figure 1 Tomahawk Lagoon is a regular habitat for the iconic Kotuku (White Heron)

The Otago Peninsula Community Board notes the positive clearing of the channel on the lagoon side of the area during heavy rain in 2017 and during a significant period of high seas in 2020. This was appreciated by the community and showed the Council being decisive and engaged with the Community Board and the Tomahawk community. However, there is a need to ensure the regular planned clearance of this work for the benefit of the community and the health of the lagoon.

The Otago Peninsula Community Board are pleased that after several false starts that the process of having an engaged community over the lagoon has begun in 2021. This has been undertaken positively by Council staff and the process of having targeted projects for the lagoon is welcomed by the community.

Submission

1. That the Otago Regional Council allocate sufficient funding to ensure that the work of Council staff undertaking community consultation can be achieved to ensure:
2. An appropriate management of the weir that controls water levels in the lagoon complex.
3. Surety over the management of the waterway in times of high rainfall and flooding.
4. A joint approach to the management of the channel affecting flooding with the ORC and DoC.
5. The implementation of the Management Plan and objectives developed by the ORC in conjunction with the community that includes, water quality, biodiversity, recreation, accessibility, cultural matters and the general enjoyment and use of the lagoon area. A continued programme of monitoring, reporting and liaison that informs the community of the health of the lagoon.



Figure 2&3 shows a significant algal bloom coming from the lagoon onto the beach in 2017. These events will continue unless the Council step up in the management of this area with the community.

Submission to the Otago Regional Council Long Term Plan 2021-2031
Otago Peninsula Community Board

2. Tomahawk Beach Sand Mining



The mining of Tomahawk Beach under the Coastal Permits 2010.256 and 2010.257 has been problematic for the community and the Tomahawk coastal environment. This was highlighted recently when the permit holder disturbed a female NZ sea lion and its newly born pup (pictured). The local community were justifiably upset not only at the actions of the permit holder but also their attitude to the community. What particularly upset the community was that it had taken on the stewardship of the young family, protecting it from dogs, vehicles and

disturbance.

It has become clear that the current permit and its conditions does not take into account the changing situation involving marine mammals at Tomahawk. The NZ Sea Lion population on the mainland is increasing and this should be viewed as one of Otago's conservation success stories. Dunedin heralds itself as the "wildlife capital" of New Zealand and the Otago Regional Council is not immune from this sentiment or in ensuring the protection of biodiversity in our region.

Submission

1. The Otago Peninsula Community Board submits that this coastal permit should have its outdated conditions changed as a matter of urgency to bring it into line with the current status of marine biodiversity in the Otago Region.

3. Biodiversity & Pest Management

The location of the Otago Peninsula and its importance to the region as a hub of biodiversity means that the area faces unique challenges for both public and private landowners who are working to improve their property for the benefit of biodiversity on the Otago Peninsula. Pest plant control is a major component of ecological restoration and one that many landowners and groups spend significant resources on to achieve.

The rabbit problem in our community is high and this creates serious problems with predator/prey relationships for our area due to increased numbers of mustelids surviving on rabbits. This creates high risk for iconic species of birdlife such as Yellow-eyed Penguin and Blue Penguin through predation that the Peninsula and the City relies on for economic wealth and development. While the Otago Peninsula Biodiversity Trust has made excellent inroads in the possum numbers of the Peninsula and has formed a model of community led control, the opportunity is now required to extend that model onto the rabbit/mustelid issues that we have on the Peninsula.

Submission

1. The Board submits that this should be a priority for the Otago Regional Council so that conservation and biodiversity gains made on the Peninsula and other areas are able to be built on and enlarged.
2. It is the submission of the Peninsula Community Board that resources in control, research and advocacy are required from the Otago Regional Council to support landowners and organisations

Submission to the Otago Regional Council Long Term Plan 2021-2031
Otago Peninsula Community Board

who are undertaking this type of animal control on the Otago Peninsula. Again, there is opportunity for information and resource sharing from the ORC and other agencies.

3. Public Transport



Public transport is essential for many people within our community and the efficiency and regularity of that service must be continued to ensure our community thrives. The Council have made improvements to the route of the service and recently staff have altered the afternoon timetable in consultation with the Board and the community. This has been a significant improvement for our community, However, like any service improvements could make the service more attractive to Peninsula users.

Submission

1. With the proposed acceleration of the Peninsula road widening project, cyclists will increase on the road but also we expect the possibility of using the bus to take a bike one way and then ride home, will become a popular trend. The Board submits that buses need to be able to accommodate cycles inside as they do in other countries.
2. The Council consider making the \$2 rate a permanent feature of public transport in our region.
3. Consultation and implementation of bilingual place names and signage on the Otago Peninsula including work with the ORC over bus signage.

4. Otago Harbour

Boatsheds and Moorings

The occupation of the sea bed and harbour fringes by boat sheds and moorings for recreational use is an important aspect of the character of the Otago Peninsula. In recent years consenting fees for boatsheds have risen considerably as the requirement for resource consent in lieu of occupation has been undertaken by the ORC. Often boatsheds have been on the same site for generations and have largely been unchanged for the same period of time. This means that without exception the effects of occupation have not altered.

Submission

1. It is the Board's submission that resource consent fees for such occupations, including ramps and moorings, should be standardised to recognise that effects have not changed rather than requiring complicated and costly assessment of environmental effects.

Dredging of the Eastern Channel

The Eastern Channel is important to the Peninsula community for recreational boating, potential access between communities during Civil Defence emergencies and for the Coastguard vessel. With

Submission to the Otago Regional Council Long Term Plan 2021-2031
Otago Peninsula Community Board

the completion of the walkway/cycle way there will be increased demand for access to the harbour. A safe, navigable, maintained Eastern Channel is important to retain access to jetties and ramps on the Otago Peninsula. Currently it is difficult for recreational craft and the Coastguard to navigate this channel given the silting up of the harbour and the changing nature of the channel.

Submission

1. The Board submits that ORC needs to work with local boating clubs and Coastguard to identify especially shallow areas that may be able to be addressed in the short term, and to consider a long term plan for the dredging the Eastern Channel.

Otago Harbour Management

The Otago Harbour is central to our community for recreation, play, business, biodiversity, transport and food. Our community and its whanau are reliant on its health and management by the Council for the benefit of our community and the wider region.

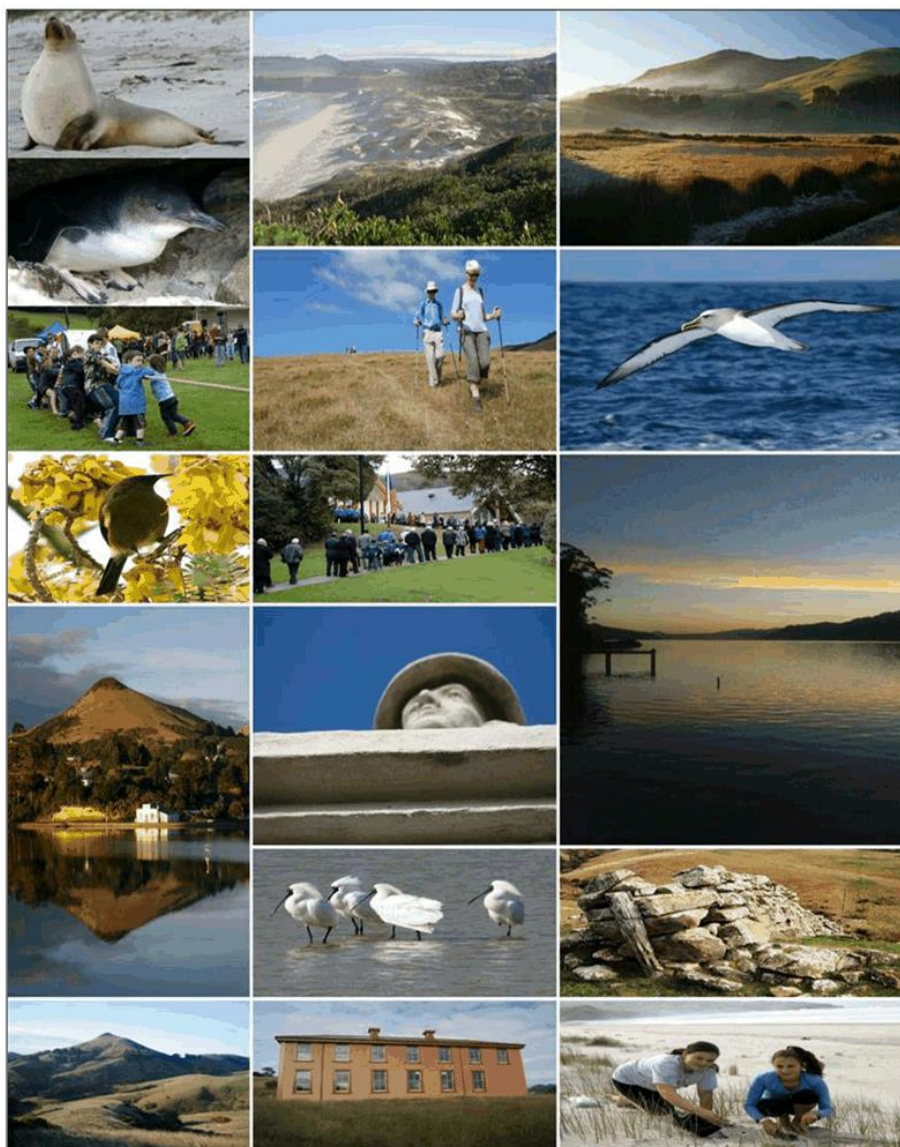
The Board notes the recent Ministry for the Environment on the impact of plastic on marine ecosystems. At Pilots Beach on Otago Peninsula, it is reported that:

"There are 15 items of rubbish for every 100sqm of beach, of which 23% is hard plastics and 23% are food wrappers."

Submission

1. The Board submits that greater financial investment is required by the Council for recreation, biodiversity and tourism
2. The Board seeks greater protection, measures and initiatives to stop plastic and other rubbish from entering the harbour and affecting wildlife that is pivotal to our region financially and culturally.

Otago Peninsula Community Board Submission to the Dunedin City Council Destination Plan

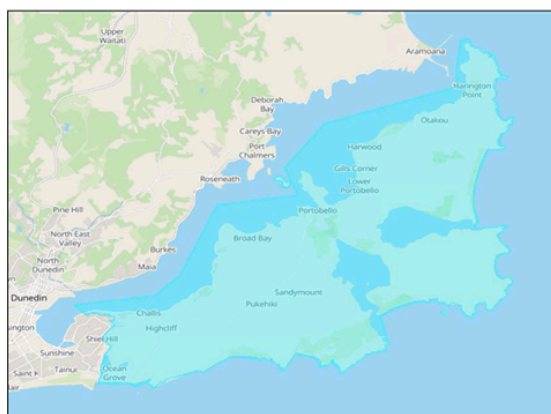


Submission to the Dunedin City Council Destination Plan
Otago Peninsula Community Board

Introduction

The Otago Peninsula Community Board's Destination Plan submission identifies key projects and issues for the Otago Peninsula. .

The purpose of the Otago Peninsula Community Board's submission is to identify and highlight key aspects of our community, landscape and culture s of significance. It also signals a desire by the Board to ensure a productive partnership with the Dunedin City Council. As central location in the visitor market the Otago plays an important role it's the Boards role to also advocate for the future needs of the community in terms of quality



local infrastructure, local services, economic development and the functions of conservation and landscape protection.

Tisdale (2008) conservatively suggests that wildlife on the Otago Peninsula generates \$100 million NZD annually and creates 800-1000 full-time equivalent jobs in the Dunedin area. In 2018 the website "Culture Trip" described the Otago Peninsula

attractions as one of the top ten ecotourism attractions in Otago, while the late David Bellamy said 'In my opinion the Otago Peninsula is the finest example of ecotourism in the world'. The Lonely Planet in 2010 ranked the Otago Peninsula as "the number one cycling destination in the world." Ask any local about these acclamations and they will quietly tell you that "we've known about that for years!"

This plan provides information about what the Community Board sees as some of the issues and opportunities for the Otago Peninsula and ultimately the city and integrates the needs of the Peninsula with the city's vision and strategic framework.

The Otago Peninsula is a diverse community covering the residential area of Tomahawk, the townships sites of Macandrew Bay, Broad Bay, Portobello, Harwood and Otakou, as well as the rurally isolated areas of the “back bays” of Hooper’s and Papanui Inlets. With this in mind it has been important to identify specific issues for each area as representative of the people who live there.

Submitted on Behalf of the Otago Peninsula Community Board



Paul Pope – Chairman

Submission to the Dunedin City Council Destination Plan
Otago Peninsula Community Board

Details of the Boards' Submission

Transport – A Connected City



The Peninsula Connection Project

The Peninsula Connection Project has seen a significant change in safety and access for a wide range of users. It has been part of the Board's programme for at least 20 years and now with only a few smaller pieces to complete the community is seeing some light at the end of the tunnel. However, the unfunded section from Ellison Road to the Otakou Fisheries wharf is of major concern to the community in terms of safety, accessibility and equity. This unfunded area is the narrowest and probably the most unsafe area of the whole project. It is also the shortest being a mere 620 metres of construction work. With the future development of Te Rauone Beach and Wellers Rock the need for better accessibility in this area has become paramount and strategically important.

There is a greater opportunity for the City and the Peninsula when looking at the linkages between the current West Harbour Cycleway on SH 88 and the Peninsula Connection.

However, the strategic value of both in terms of visitors and as a true destination option has yet to be realised because;

- The projects have not been finished
- The interference with Covid 19 and lockdown has changed the visitor dynamic
- Both projects are being run by two separate agencies in two different locations

The opportunity to promote a complete harbour cycle/walkway with city connections has nearly been realised in the construction phases, but no strategic marketing, promotion or development has yet been undertaken. This is a missed opportunity,

Submission to the Dunedin City Council Destination Plan
Otago Peninsula Community Board

especially in light of the private ferry business transporting cyclists and walkers between the eastern and western sides of the harbour.

Submission

1. *The Peninsula Community Board submits that the Council include the unfunded section of the Connection Project into the LTP as a matter of urgency for the benefit and safety of locals and visitors alike.*
2. *While both the Peninsula and West Harbour projects are underway and nearing completion planning should begin into the development of marketing and promotion strategies for a "whole of harbour" experience using the completed cycling/walking infrastructure.*
3. *One of the issues facing the Peninsula Connection Project and the West Harbour one is understanding the terrestrial, aquatic, historical and cultural values. It's a blank canvas that has no detail to the stories that make the Harbour the place that it is. This is not only confusing but limits the experience visitors have when using the opportunities, the Connection creates. There is significant value in providing interpretation and investing in public art works that tell the story of our area. It also has the opportunity to provide better information on travel times, behaviour and visitor attractions while using the Connection asset.*



Information Signage with International Symbols for Townships



The business community on the Otago Peninsula is pivotal to the tourism and visitor market for our region and city. However, our information signage regarding accommodation services, eating establishments, services and attractions is poor. In the post Covid 19 economy we need all efforts we can provide to support businesses as they redefine themselves in the current market.



Submission – *The board submits that the City Council invest in more visible place-based signage denoting the place, facilities, attractions and services available in township areas of the Otago Peninsula to support business and groups.*

A Thriving and Diverse Economy



The Impacts of Tourism on our Economy and Environment

In the post Covid context our visitor numbers have significantly altered with the drop in foreign tourists. It is unknown just how well or how long the tourism sector will recover from the effects of the pandemic. There is a significant opportunity to add value and understanding to the sector by increasing the level of financial and research support on the environmental, societal and economic effects of tourism on the Peninsula. Further, in the introduction to the submission various “*facts and figures*” were used to explain the importance of the Otago Peninsula as a destination. The problem with this information, and as compelling as it might seem, it is now over a decade old in some instances. To make good decisions around marketing, the development of infrastructure and ensuring the Otago Peninsula is a compelling destination we need better research and data about our destination.

Submission

1. *The Board submits that there is a need to add value to the sector by developing ongoing research of the positive and negative effects of the tourism sector on the Otago Peninsula.*
2. *Ongoing research is also required into the way visitors visit the Peninsula and what their experience was like.*
3. *The City Council should be partnering the Otago University and Polytechnic Tourism Departments to create internships and scholarship opportunities for ongoing longitudinal research.*

Submission to the Dunedin City Council Destination Plan
Otago Peninsula Community Board

Greenhouse Emissions and the Effects of Carbon from the Tourism Sector



The Otago Peninsula is a biodiversity hotspot of national and international significance. The ecotourism sector is a significant part of both business and ecological management of many endangered species. However, the ecotourism sector heavily is reliant on high carbon emission transportation such as air, bus, camper van and motor car travel. At the same time the City Council is “land rich” in terms of recreational and ecological space on the Peninsula suitable for the development of tree planting mitigation projects. These would create measurable impacts on tourist carbon and provide important strengthening of threatened habitat important to the taoka species of our area.

Submission

1. *The Board submits that the City Council plant 1,000,000 trees over 10 years on the Otago Peninsula would assist in mitigating the effects of tourism carbon emissions and support habitat creation for critical species on the Otago Peninsula.*

A Sustainable City with Healthy and Treasured Natural Environments

Habitat Management and Species Support



The promotion of Dunedin as “the wildlife capital of New Zealand” is an enviable title but there must be a continued vigilance and work to maintain that mantle. The Otago Peninsula is fortunate to have many hard-working community groups and individuals who dedicate their time and hard work to sustain ecological restoration and conservation here. However, species such as the Hoiho face extinction on the mainland in a matter of a few years if we are not able to remove predators, repair habitat and provide the best opportunities for breeding years (NZ Herald, 2017).

This has significant implications for the Otago Peninsula if we are to lose a keystone species from our landscape. It also shows how vulnerable our ecotourism operations are to habitat loss, disease and climate change. Biodiversity and conservation are not just limited to role of the Department of Conservation, but is part of local governments portfolios of responsibility. It is time that the Dunedin City Council took a greater leadership and landowners’ role in protecting and enhancing critical biodiversity on the Peninsula. This requires investment into conservation works in partnership with agencies and the community to halt further decline in our taoka and our landscape.

Submission

1. *The Board submits that the City Council must increase its investment in its reserve lands, community groups and agency partnerships on the Otago Peninsula to protect vulnerable species and habitats from further decline.*

Submission to the Dunedin City Council Destination Plan
Otago Peninsula Community Board

Active City with Quality and Accessible Recreational Spaces and Opportunities



Otago Peninsula Track Network

The Otago Peninsula track network is a significant recreational asset that provides a coastal and terrestrial linkage between St Clair and Victory Beach. All of the tracks are on unformed legal roads and are the responsibility of the Dunedin city Council. Two of the track areas are part of Conservation Act 1987 land administered by the Department of Conservation. The network encompasses significant areas of the Peninsula such as Sandfly Bay, Boulder Beach, Sandymount and Hereweka Harbour Cone. However, the signage, hand rails, marker posts, and boardwalks on parts of the network were first installed in the mid 1990's. Subsequently, they have fallen into disrepair due to a lack of maintenance and care. When

you combine the lack of maintenance with no marketing or promotion the Peninsula Track Network has become devalued as a track experience for users and a missed opportunity to diversify the visitor market.

Submission

1. *The Board submits that the Otago Peninsula Track Network is a world class asset that has been allowed to degrade and depreciate due to a lack of maintenance and care. This asset requires capital investment and maintenance to see it reach its real potential.*
2. *The Peninsula Track Network requires a strategic plan for the development of the asset as a quality recreational attraction that allows leverage for business.*

Submission to the Dunedin City Council Destination Plan
Otago Peninsula Community Board

Mana whenua



Muaupoko (Otago Peninsula) is the home to the Ōtākou Runaka, but has been home to the Waitaha, Kāti Māmoe and Kai Tahu people for many hundreds of years. Ōtākou was the name of a channel running in the lower harbour and became applied to the entire region. Of significant importance is the Ōtākou Marae, which

was one of the places where the Treaty of Waitangi was signed in 1840. Those who signed were descended from ancestors of all three tribes. There is a distinct and rightful pride emanating from the Ōtākou Runaka that defines the Otago Peninsula in its place names and its people. The very name Ōtākou defines the whole region and the beginnings of what we call Otago sits on the tiny rock foreshore at Te Umu Kuri (Wellers Rock).

Submission

1. *The Otago Peninsula needs to do better at telling its stories, history and culture to its community and visitors alike, but it must be done as a genuine and respectful experience.*
2. *The provision of Peninsula place names in te reo and english in street signage would help to interpret the complex but interesting bilingual history of the community.*
3. *Declaring the Otago Peninsula as a genuine bilingual community would be a step towards encouraging and normalising te reo in the community and region through the use of signage on public facilities and services.*
4. *A continued meaningful relationship is required to ensure that Maori values are understood and treasured.*



Other Issues for the Otago Peninsula

- *Strategic development of community service, facilities and business stocktakes of the Otago Peninsula*
- *Continued improvement of hi speed internet and cell phone coverage to improve community and home-based business opportunities*
- *Development of night sky tourism opportunities*
- *Continued improvement in accessibility and delivery of public transport services*
- *A Peninsula based business forum or Chamber of Commerce*
- *Removal of red tape around concessions and leverage opportunities around public land and facilities use for business opportunities*
- *An accommodation sector stocktake at all levels across the Peninsula to measure post covid recovery*
- *Creation of opportunities for volunteer tourism*
- *Investigation and development of the Otago Peninsula as an Outdoor Education area for schools in Otago*
- *Creation and support for a wider array of sports, artistic and cultural events*

Tisdale, C (2008) *Working Paper No. 149. Wildlife Conservation and the Value of New Zealand's Otago Peninsula: Economic Impacts and Other Considerations*. University of Queensland

Otago Daily Times (2020) <https://www.odt.co.nz/regions/southland/massive-yellow-eyed-penguin-decline-stewart>

NZ Herald (2017) <https://www.nzherald.co.nz/nz/yellow-eyed-penguins-will-disappear-from-mainland-within-40-years-warn-researchers/ZSGV55GGCAH4TWEQSVPROZ7EAE/>

Submission to the Dunedin City Council Destination Plan
Otago Peninsula Community Board

Otago Peninsula Community Board

Otago Regional Council Regional Public Transport Plan 2021

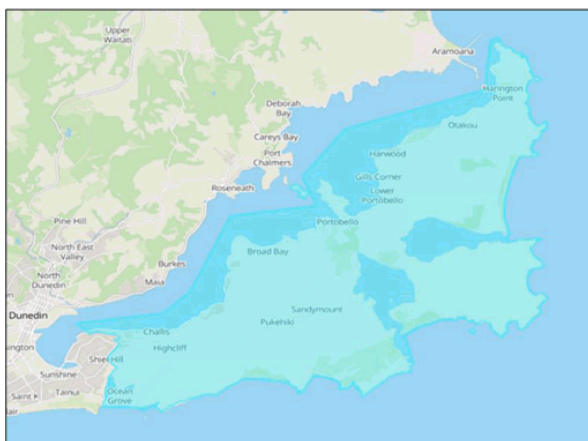
Attachment D



Submission to the Dunedin City Council Long Term Plan 2021-2031
Otago Peninsula Community Board

The Otago Peninsula Community Board Regional Public Transport Plan submission identifies key issues for the Otago Peninsula in public transport.

It signals those issues to the Otago Regional Council (ORC) with the ultimate goal that the ORC and the Community Board will work in partnership to ensure the current and future public transport needs of the community are met in a way that is cost effective for households and businesses.



The Otago Peninsula is a diverse area covering the residential area of Tomahawk, the townships sites of Macandrew Bay, Broad Bay, Portobello. Harwood and Otakou as well as the rurally isolated areas of the “back bays” of Hooper’s and Papanui Inlets. With this in mind it has been important to identify specific issues for each area as representative of the people who live there.

Submitted on Behalf of the Otago Peninsula Community Board

Paul Pope – Chairman

Details of the Boards' Submission

Climate Change Resilience

Predictions of greater extremes of rainfall due to climate change have been borne out in the 2015 and 2017 events on the Otago Peninsula. Slipping and flooding have taken their toll on the Peninsula roading network and will continue to do so in the future. This has long term implications for our area and the whole Otago Region.

Submission

1. The Board submits that the Otago Regional Council should begin planning public transport services around electrification of the bus network and other energy efficient options that reduce emissions.

Bus Services



Public transport is essential for many people within our community and the efficiency and regularity of that service must be continued to ensure our community thrives. The Council have made improvements to the route of the service and recently staff have altered the afternoon timetable in consultation with the Board and the community. This has been a significant improvement for our community. The reduction in fare prices has also been a significant and welcome change for the community.

However, like any service improvements could make the service more attractive to Peninsula users.

Submission

1. With the proposed acceleration of the Peninsula Connection widening project, cyclists will increase on the road but also, we expect the possibility of using the bus to take a bike one way and then ride home, will become a popular trend. The Board submits that buses need to be able to accommodate cycles inside as they do in other countries.
2. The Council consider making the \$2 rate a permanent feature of public transport in our region for the benefit of public transport users and householders.
3. Consultation and implementation of bilingual place names and signage on the Otago Peninsula including work with the ORC over bus signage.
4. The Board seeks an extension to the Harington Point route to the turnaround area adjacent to Taiaroa Head and the Albatross Colony. This is a minor extension that would assist in the recovery of tourism operations for the Otago Peninsula by giving travellers public transport options for our area.

FUNDING APPLICATIONS

Department: Civic

EXECUTIVE SUMMARY

- 1 This report provides a copy of the funding application received for the Board's consideration. As this is an administrative report only, the Summary of Considerations is not required.
- 2 The balance of project funds available to the Board as at 17 June is \$1,338.40.
- 3 Paul Pope as OPCB Chairperson has been in discussion on the placement of a commemorative plaque in memory of Mayor Dave Cull, to be placed at Challis.
- 4 A quote for the cost of a plaque is attached for discussion (Attachment A)

RECOMMENDATIONS

That the Board:

- a) **Approves/declines** the funding of \$_____ for a commemorative plaque for Mayor Dave Cull

Signatories

Author:	Lauren McDonald - Governance Support Officer
Authoriser:	Clare Sullivan - Manager Governance

Attachments

	Title	Page
↓A	J W Swan quote for plaques	53

JOHN SWAN & CO - ENGRAVERS

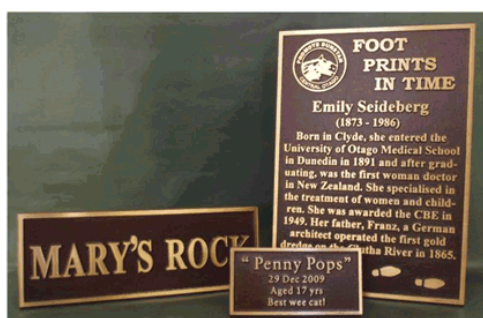
366 Moray Place Dunedin (03) 4772064

www.johnswan.co.nz

Paul Pope – 3 June 2021

Otago Peninsula Community Board

The cost to supply 150 x 100mm cast bronze rectangle plaque is \$425



The cost to supply 150 x 100mm cast bronze oval plaque is \$450

The cost to supply 150 x 100mm bass engraved plaque is \$199



Prices include gst

For more information feel free to call or email us

orders@johnswan.co.nz 03 4772064

Janette Armstrong - Owner

COMMUNITY PLAN 2020-2021

The Community Board plan is tabled for discussion at each meeting for the purpose of review and update as required.

Attachments

There are no attachments for this report.

BOARD UPDATES

Department: Civic

EXECUTIVE SUMMARY

1 Board members will provide updates on activities including:

- Keep Dunedin Beautiful
- Rural Roads
- Community Meetings
- Civil Defence/Community Response Planning
- Te Rauone Reserve
- Harington Point Battery

RECOMMENDATIONS

That the Board:

- a) **Notes** the Board Updates.

Signatories

Author:	Lauren McDonald - Governance Support Officer
Authoriser:	Clare Sullivan - Manager Governance

Attachments

	Title	Page
⬇️A	Civil Defence - resources and contact list	56

MARINE SEARCH AND RESCUE

COASTGUARD

Vessel stationed at Otago Yacht harbour. Call out through Police.

1 x 13m Rescue Vessel

1 x 4WD Truck

Port OTAGO Harbour Control

Beach Street, Port Chalmers 03 472-988 2

Shipping 03 479-9718

Weather www.portotago.co.nz

Harbour Master 03 474-0827

24 hr coverage of. Monitors VHF Marine Ch 16, 14, 62

Coastguard Now casting VHF Ch 79 (24x7)

Radar with GPS overlay to 32-58 NM from Taiaroa Heads

Remote Camera- Taiaroa Heads, Range 10 NM

Camera Coverage of Lower and Upper Harbour

AIS Function

Harbour Masters Vessel

University of Otago Marine Laboratory

Hatchery Road, Portobello 03 479-5810

Vessels

RV Polaris 22M, Marine VHF, HF, SAT phone. Side scan sonar and RUV

2 x 4M Tenders

Beryl Bruin 11M VHF, GPS, Radar

Tawera 6M VHF, GPS

Diving

1 x 4 bottle compressor

Macandrew Bay Boat Club 4.3m RIB

Broad Bay Boat Club 4m Stabi Craft

Transportation

2 x 21seater buses	Penguin Place	03 4780-286
ARGO- ATV's	Natures Wonders	03 4780-150

Earthmoving Equipment

Clearwater Civil	027 603-0988
Peninsula Contracting	03 4780-508

Fuel

Allied Fuel at Portobello Motors EFTPOS/Credit/Debit only.

Postal

NZ Post home delivery

Rural Delivery through NZ Post

POLICE

Portobello Police Station
 1708 Highcliff Road
 Portobello, 9014, Dunedin

FIRE SERVICE

Portobello Volunteer Fire Brigade - Unmanned 03 4780-700
 Hereweka St, Portobello
 Sirens at Portobello and Broad Bay.

Activated through Fire Communication Centre

Recourses

- 1 x Fire Appliance Appliance Cell no. 027 2287496
- 1 x Water Tanker
- First Responder Unit
- Lighting Equipment
- Land SAR packs
- Light Cliff Rescue

MEDICAL

Peninsula Medical Centre 03 4780-880
 15 Sherwood St, Portobello
 Bay Surgery collocated with 03 4761-733
 Macandrew Bay Plunket Rooms
 Macandrew Bay Pharmacy 03 4761-211

POWER

Delta

CIVIL DEFENCE

Otago Civil Defence Plan held by CDEOC
 Elected Community Board members have aide memoire for emergencies
 1 x CD Radio and CD Recourses Box held at Portobello Bowling Club

MAP DATA

NZ Topo

CE 17&CE18 1:50.000 Dunedin including Otago Peninsula

Marine Chart No 661 Title Approaches to Otago Harbour

Marine Chart No 6612 Title Otago Harbour

A2 Ariel Photo at Portobello Police Station

SCHOOLS

Portobello School	Harington Point Rd, Portobello	03 4780 605
Broad Bay School	Roebuck Rise, Broad Bay	03 4780-706
Macandrew Bay School	Portobello Rd, Macandrew Bay	03 4761-004

PRE SCHOOL

Macandrew Bay Play Centre, Macandrew Bay School	03 4761-004
Family Ties, 10 Greenacres St, Macandrew Bay	03 4761-322
Portobello Play Centre Harington Pt Rd, Portobello	03 4780-888
Portobello Kindergarten, Beaconsfield Rd, Portobello	03 4780-812

HALLS

Macandrew Bay Hall	Kitchen Facilities
Broad Bay Hall	Kitchen Facilities
Portobello Hall	Kitchen Facilities
Scott Hall, Harwood	Kitchen Facilities
Otakau Marae	Commercial Kitchen Facilities

CLUBS

Macandrew Bay Scout Hall
Macandrew Bay Yacht Club
Macandrew Bay Bowling Club
Portobello Bowling Club

COUNCILLOR'S UPDATE

Department: Civic

EXECUTIVE SUMMARY

- 1 Councillor Andrew Whiley will provide an update on matters of interest to the Board.

RECOMMENDATIONS

That the Board:

- a) **Notes** the report from Cr Whiley.

Signatories

Author:	Lauren McDonald - Governance Support Officer
Authoriser:	Clare Sullivan - Manager Governance

Attachments

There are no attachments for this report.

CHAIRPERSON'S REPORT

Department: Civic

EXECUTIVE SUMMARY

A verbal update will be provided by the Chairperson at the meeting, including:

- Acknowledgement of Queens Birthday Honours 2021 – Hoani for services to conservation.
- Biodiversity and Tourism Forums
- OPCB Board Submissions
- Civil Defence
- Arbour Day – feedback
- Community meetings
- Commemorative Plaque for Mayor Dave Cull at Challis (funding request)
- Chorus copper withdrawal and Spark PSTN switch off
- Old school site at Tomahawk
- Rural options for kerbside collection

RECOMMENDATIONS

That the Board:

- a) **Notes** the update from the Chairperson.

Signatories

Authoriser:	Clare Sullivan - Manager Governance
-------------	-------------------------------------

Attachments

There are no attachments for this report.

ITEMS FOR CONSIDERATION BY THE CHAIRPERSON

Items for consideration by the Chairperson