

Notice of Meeting:

I hereby give notice that an ordinary meeting of the Mosgiel-Taieri Community Board will be held on:

Date: Thursday 10 February 2022

Time: 5.00 pm

Venue: Via audio visual link

Sandy Graham
Chief Executive Officer

Mosgiel-Taieri Community Board**PUBLIC AGENDA**

MEMBERSHIP

Chairperson	Joy Davis	
Deputy Chairperson	Dean McAlwee	
Members	Phillipa Bain Cr Carmen Houlahan Brian Peat	Martin Dillon Brian Miller
Senior Officer	Scott MacLean, Group Manager Parks and Recreation	
Governance Support Officer	Clare Sullivan	

Clare Sullivan
Manager Governance

Telephone: 03 477 4000
clare.sullivan@dcc.govt.nz
www.dunedin.govt.nz

Note: Reports and recommendations contained in this agenda are not to be considered as Council policy until adopted.

ITEM	TABLE OF CONTENTS	PAGE
1	Public Forum	4
2	Apologies	4
3	Confirmation of Agenda	4
4	Declaration of Interest	5
5	Confirmation of Minutes	11
5.1	Mosgiel-Taieri Community Board meeting - 10 November 2021	11
PART A REPORTS (Mosgiel-Taieri Community Board has power to decide these matters)		
6	Otago Regional Council - Public Transport Update	18
7	Governance Support Officer's Report	19
8	Naming of one new road and one new private road, Mosgiel	30
9	Community Plan	43
10	Project Fund	56
11	Board Updates	77
12	Chairperson's Report	78
13	Council Activities	80
14	Items for consideration by the Chair	81

1 PUBLIC FORUM

At the close of the agenda no requests for public forum had been received.

2 APOLOGIES

At the close of the agenda no apologies had been received.

3 CONFIRMATION OF AGENDA

Note: Any additions must be approved by resolution with an explanation as to why they cannot be delayed until a future meeting.

DECLARATION OF INTEREST

EXECUTIVE SUMMARY

1. Members are reminded of the need to stand aside from decision-making when a conflict arises between their role as an elected representative and any private or other external interest they might have.
2. Elected members are reminded to update their register of interests as soon as practicable, including amending the register at this meeting if necessary.

RECOMMENDATIONS

That the Board:

- a) **Notes/Amends** if necessary the Elected Members' Interest Register attached as Attachment A; and
- b) **Confirms/Amends** the proposed management plan for Elected Members' Interests.

Attachments

Title	Page
A Register of Interest	7

Mosgiel-Taieri Community Board Register of Interest 10 February 2021				
Name	Responsibility (ie: Chairperson etc)	Declaration of Interests	Nature of Potential Interest	Proposed Management Plan
Joy Davis	Regional Co-ordinator	Otago Neighbourhood Support	No conflict identified	identified. Seek advice on actual or potential conflicts of interest prior to the meeting. Withdraw from discussion and leave the table if a conflict of interest is identified. Seek advice on actual or potential conflicts of interest prior to the meeting.
	Owner	Residential Property, Mosgiel	No conflict identified	Withdraw from discussion and leave the table if a conflict of interest is identified. Seek advice on actual or potential conflicts of interest prior to the meeting.
	Member	DCC Social Wellbeing Advisory Group	No conflict identified	Withdraw from discussion and leave the table if a conflict of interest is identified. Seek advice on actual or potential conflicts of interest prior to the meeting.
	Member	Labour Party	No conflict identified	Withdraw from discussion and leave the table if a conflict of interest is identified. Seek advice on actual or potential conflicts of interest prior to the meeting.
	Board Representative	Mosgiel and Taieri Emergency Group	No conflict identified	Withdraw from discussion and leave the table if a conflict of interest is identified. Seek advice on actual or potential conflicts of interest prior to the meeting.
	Board Representative	Mosgiel Business Association	No conflict identified	Withdraw from discussion and leave the table if a conflict of interest is identified. Seek advice on actual or potential conflicts of interest prior to the meeting.
	Trustee	The Taieri Network	No conflict identified	Withdraw from discussion and leave the table if a conflict of interest is identified. Seek advice on actual or potential conflicts of interest prior to the meeting.
Phillipa Bain	Trustee	Taieri Christian Care Community Foodbank	No conflict identified	Withdraw from discussion and leave the table if a conflict of interest is identified. Seek advice on actual or potential conflicts of interest prior to the meeting.
	Owner Residential Properties	Residential properties, Mosgiel and Dunedin	No conflict identified	Withdraw from discussion and leave the table if a conflict of interest is identified. Seek advice on actual or potential conflicts of interest prior to the meeting.
	Board Representative	Keep Dunedin Beautiful	No conflict identified	Withdraw from discussion and leave the table if a conflict of interest is identified. Seek advice on actual or potential conflicts of interest prior to the meeting.
Martin Dillon	Company Director	A1 Electrical Contractors Ltd	DCC Approved Contractor	Withdraw from discussion and leave the table if a conflict of interest is identified. Seek advice on actual or potential conflicts of interest prior to the meeting.
	Owner	Residential Property, Mosgiel	No conflict identified	Withdraw from discussion and leave the table if a conflict of interest is identified. Seek advice on actual or potential conflicts of interest prior to the meeting.
Dean McAlwee	Committee Member	West Taieri Rugby Club	Potential grants recipient	Withdraw from discussion and leave the table if a conflict of interest is identified. Seek advice on actual or potential conflicts of interest prior to the meeting.
	Owner	Residential Property, Mosgiel	No conflict identified	Withdraw from discussion and leave the table if a conflict of interest is identified. Seek advice on actual or potential conflicts of interest prior to the meeting.
	Board Representative	Tunnels Trust	No conflict identified	Withdraw from discussion and leave the table if a conflict of interest is identified. Seek advice on actual or potential conflicts of interest prior to the meeting.
	Board Representative	Outram Emergency Group	No conflict identified	Withdraw from discussion and leave the table if a conflict of interest is identified. Seek advice on actual or potential conflicts of interest prior to the meeting.
	Owner	Commercial Property, Mosgiel	No conflict identified	Withdraw from discussion and leave the table if a conflict of interest is identified. Seek advice on actual or potential conflicts of interest prior to the meeting.
Brian Miller	Trustee	B J & A J Miller Family Trust	No conflict identified	Withdraw from discussion and leave the table if a conflict of interest is identified. Seek advice on actual or potential conflicts of interest prior to the meeting.

	Member	New Zealand Motorhome Association	No conflict identified	Withdraw from discussion and leave the table if a conflict of interest is identified. Seek advice on actual or potential conflicts of interest prior to the meeting.
	Owner/Director	Aquarius Garden	No conflict identified	Withdraw from discussion and leave the table if a conflict of interest is identified. Seek advice on actual or potential conflicts of interest prior to the meeting.
	Board Representative	Friends of the Mosgiel Memorial Gardens	No conflict identified	Withdraw from discussion and leave the table if a conflict of interest is identified. Seek advice on actual or potential conflicts of interest prior to the meeting.
	Board Representative	Mosgiel Aquatic Project Team	No conflict identified	Withdraw from discussion and leave the table if a conflict of interest is identified. Seek advice on actual or potential conflicts of interest prior to the meeting.
	Apellant to 2GP	B J and A J Miller Family Trust	No conflict identified	Withdraw from discussion and leave the table if a conflict of interest is identified. Seek advice on actual or potential conflicts of interest prior to the meeting.
Brian Peat	Owner	Residential Property, Mosgiel	No conflict identified	Withdraw from discussion and leave the table if a conflict of interest is identified. Seek advice on actual or potential conflicts of interest prior to the meeting.
	Committee Member	Chatsford Residents Committee	No conflict identified	Withdraw from discussion and leave the table if a conflict of interest is identified. Seek advice on actual or potential conflicts of interest prior to the meeting.
	Vice President	Retirement Village Residents Association NZ	No conflict identified	Withdraw from discussion and leave the table if a conflict of interest is identified. Seek advice on actual or potential conflicts of interest prior to the meeting.
	Board Representative	Silverstream Plantings Project	No conflict identified	Withdraw from discussion and leave the table if a conflict of interest is identified. Seek advice on actual or potential conflicts of interest prior to the meeting.
	Board Representative	Waiholā to Mosgiel Walking/Cycle Trail	No conflict identified	Withdraw from discussion and leave the table if a conflict of interest is identified. Seek advice on actual or potential conflicts of interest prior to the meeting.
	Member	Taieri Rugby Football Club	No conflict identified	Withdraw from discussion and leave the table if a conflict of interest is identified. Seek advice on actual or potential conflicts of interest prior to the meeting.
Cr Carmen Houlahan	Part Owner	Adobe Group Ltd, Wanaka	No conflict identified.	Withdraw from discussion and leave the table if a conflict of interest is identified. Seek advice on actual or potential conflicts of interest prior to the meeting.
	Owner	Residential Property , Dunedin	No conflict identified.	Withdraw from discussion and leave the table if a conflict of interest is identified. Seek advice on actual or potential conflicts of interest prior to the meeting.
	Owner	Rental Property, North Dunedin	No conflict identified.	Withdraw from discussion and leave the table if a conflict of interest is identified. Seek advice on actual or potential conflicts of interest prior to the meeting.
	Member	Dunedin Rotary Club	No conflict identified.	Withdraw from discussion and leave the table if a conflict of interest is identified. Seek advice on actual or potential conflicts of interest prior to the meeting.
	Member	Institute of Directors	No conflict identified.	Withdraw from discussion and leave the table if a conflict of interest is identified. Seek advice on actual or potential conflicts of interest prior to the meeting.
	Member	Otago Propety Investors Associaton	No conflict identified.	Withdraw from discussion and leave the table if a conflict of interest is identified. Seek advice on actual or potential conflicts of interest prior to the meeting.
	Company Owner/Sole Director	Shelf Company - RH There	No conflict identified.	Withdraw from discussion and leave the table if a conflict of interest is identified. Seek advice on actual or potential conflicts of interest prior to the meeting.
	Shareholer	Startup Business	No conflict identified	Withdraw from discussion and leave the table if a conflict of interest is identified. Seek advice on actual or potential conflicts of interest prior to the meeting.
	Member	Mosgiel-Taieri Community Board (Council appointment)	No conflict identified	Withdraw from discussion and leave the table if a conflict of interest is identified. Seek advice on actual or potential conflicts of interest prior to the meeting.

	Member	Toitu Otago Settlers Museum Board (Council Appointment)	No conflict identified	Withdraw from discussion and leave the table if a conflict of interest is identified. Seek advice on actual or potential conflicts of interest prior to the meeting.
	Member	Dunedin Public Art Gallery Society (Council Appointment)	No conflict identified	Withdraw from discussion and leave the table if a conflict of interest is identified. Seek advice on actual or potential conflicts of interest prior to the meeting.
	Member	Dunedin Public Art Gallery Acquisitions Committee (Council Appointment)	No conflict identified	Withdraw from discussion and leave the table if a conflict of interest is identified. Seek advice on actual or potential conflicts of interest prior to the meeting.

CONFIRMATION OF MINUTES


MOSGIEL-TAIERI COMMUNITY BOARD MEETING - 10 NOVEMBER 2021

RECOMMENDATIONS

That the Board:

- a) **Confirms** the public part of the minutes of the Mosgiel-Taieri Community Board meeting held on 10 November 2021 as a correct record.

Attachments

	Title	Page
A 	Minutes of Mosgiel-Taieri Community Board meeting held on 10 November 2021	12

Mosgiel-Taieri Community Board

MINUTES

Minutes of an ordinary meeting of the Mosgiel-Taieri Community Board held in the Edinburgh Room, Municipal Chambers, The Octagon, Dunedin on Wednesday 10 November 2021, commencing at 5.00 pm

PRESENT

Chairperson	Joy Davis
Deputy Chairperson	Dean McAlwee
Members	Phillipa Bain Martin Dillon Brian Miller Brian Peat (via Zoom) Cr Carmen Houlahan

IN ATTENDANCE	Clare Sullivan (Manager Civic), Scott MacLean (Group Manager Parks and Recreation)
----------------------	--

Governance Support Officer	Jennifer Lapham
-----------------------------------	-----------------

1 PUBLIC FORUM

There was no Public Forum.

2 APOLOGIES

There were no apologies.

3 CONFIRMATION OF AGENDA

Moved (Joy Davis/Martin Dillon):

That the Board:

Confirms the agenda without addition or alteration

Motion carried

4 DECLARATIONS OF INTEREST

Members were reminded of the need to stand aside from decision-making when a conflict arose between their role as an elected representative and any private or other external interest they might have.

Mr Miller advised that he was not the Coronation Hall Trust representative and that the Flood Mitigation Working Group had not met.

Mr Peat advised that he was not the Board's representative on the Tunnels Trust but was the representative for the Waiholo to Mosgiel Cycle/Walking Trail.

Cr Houlahan advised that the Mosgiel Business Association was not active and noted that she was the Council representative on the Dunedin Public Art Gallery Arts Society.

Moved (Joy Davis/Phillipa Bain):

That the Board:

- a) **Amends** the Elected Members' Interest Register; and
- b) **Amends** the proposed management plan for Elected Members' Interests.

Motion carried

5 CONFIRMATION OF MINUTES

5.1 MOSGIEL-TAIERI COMMUNITY BOARD MEETING - 15 SEPTEMBER 2021

Moved (Joy Davis/Dean McAlwee):

That the Board:

Confirms the minutes of the Mosgiel-Taieri Community Board meeting held on 15 September 2021 as a correct record.

Moved (Joy Davis/Dean McAlwee):

That the Board:

Adjourn the meeting.

Motion carried

The meeting adjourned at 5.09 pm and reconvened at 5.12 pm.

Motion carried with Brian Miler and Brian Peat recording their votes against.

PART A REPORTS

6 PROJECT FUND

A project completion form was received from received from Brian Peat regarding the Silverstream Planting Project.

Moved (Joy Davis/Dean McAlwee):

That the Board:

Notes the project progress report from Brian Peat regarding Silverstream Beautification project

Motion carried

Moved (Brian Miller/Dean McAlwee):

That the Board:

Pass a vote of thanks to Brian Peat for his work on the Silverstream Beautification Project.

Motion carried

7 MEETING SCHEDULE

A schedule of meetings for 2022 was attached for the Board's consideration.

Moved (Joy Davis/Cr Carmen Houlahan):

That the Board:

Approves the meeting schedule for 2022.

Motion carried

8 COMMUNITY PLAN

An updated Community Plan was attached for discussion.

It was agreed that a workshop would be held in the New Year to have a full review of the Community Plan. Following discussion amendments were made to the Community Plan to include the issue of stormwater in Silverstream and Outram Flood Mitigation.

Moved (Joy Davis/Dean McAlwee):

That the Board:

Approves the updated Community Plan for 2022/23.

Motion carried

9 GOVERNANCE SUPPORT OFFICER'S REPORT

In a report from the Governance Support Officer an update was provided on matters of interest to the Community Board.

Cr Houlahan withdrew from the discussion on the Keeping of Animals (excluding Dogs) Bylaw and the Smooth Hill Landfill Resource Consent.

Moved (Brian Miller/ Brian Peat):

That the Board:

Submits on the Keeping of Animals (excluding Dogs) and Birds Bylaw review that rural/rural residential areas should be excluded from the review.

Motion carried (MTCB/2021/036)

Moved (Joy Davis/Phillipa Bain):

That the Board:

- a) **Notes** the Governance Support Officer's Report.
- b) **Ratifies** the submission on the Dunedin City Council Smooth Hill Landfill Resource Consent.

Motion carried (MTCB/2021/037)

10 BOARD UPDATES

1 Keep Dunedin Beautiful (KDB)

Philippa Bain advised that there was nothing to report at this time.

2 Friends of the Mosgiel Memorial Garden

Brian Miller commented that the Friends of the Mosgiel Memorial Garden should be consulted in relation to the Gardens.

3 Hawk n Hurl

Dean McAlwee advised that the event had been postponed due to Covid and it was hoped that the event would be able to proceed in the new year.

4 Mosgiel Coronation Hall

Dean McAlwee advised that as a result of resignations they were seeking new trustees for the Mosgiel Coronation Hall Trust.

5 Mosgiel Aquatic Project Team

Brian Miller advised that he had not attended the last meeting, but noted that the opening date for the pool had been pushed out.

6 Mosgiel and Taieri Emergency Group

Joy Davis advised that the group had reviewed the flood maps and will now produce new ones.

7 Outram Emergency Group

Dean McAlwee advised that there was nothing to report at this time.

8 Silverstream Plantings

Brian Peat acknowledged the contributions made by the following people and groups:

- Downers NZ
- Taieri College
- Dunedin City Council
- Otago Regional Council
- Department of Conservation
- Corrections Facility, Milton
- Corrections Services PD
- Mosgiel Rotary
- Ag Research
- Advanced Landscapes
- NZ Seed Company
- Dakins
- Management Consultant
- Dunedin Amenities Society
- Scottish Shop
- Mosgiel Boys Brigade
- Mosgiel Scout Group
- B.J. and A.J. Miller Family Trust

9- Social Media

Brian Peat suggested that Board members might wish to post matters relating to Board activities on the face book page in order to inform the community of them .

10 Community Engagement

Dean McAlwee advised that he had attended a meeting in Outram to provide help and guidance for the future of the hotel.

Brian Peat provided an update on the Waiholā to Mosgiel Cycle/Walkway project.

Moved (Joy Davis/Phillipa Bain):

That the Board:

Notes the Board Updates

Motion carried

11 CHAIRPERSON'S REPORT

The Chairperson commented on her report and also advised that herself and Cr Houlahan had attended an event at Brooklands and had spoken about the Boards role. She also spoke on the installation of the security at the Memorial Garden.

Moved (Joy Davis/Dean McAlwee):

That the Board:

Notes the Chairperson's update

Motion carried

12 COUNCIL ACTIVITIES

Councillor Carmen Houlahan provided an update on matters of interest including the 3 Waters Reform and the recent Committee meetings.

Moved (Cr Carmen Houlahan/Martin Dillon):

That the Board:

Notes the Council Activities Update.

Motion carried

13 ITEMS FOR CONSIDERATION BY THE CHAIR

The Chairperson requested an update from the library.

Mr Peat raised a number of issues which were forwarded to staff for noting and/or consideration.

The meeting concluded at 6.30 pm .

.....
CHAIRPERSON

PART A REPORTS**OTAGO REGIONAL COUNCIL - PUBLIC TRANSPORT UPDATE**

Julian Phillips, Implementation Lead Transport will be in attendance to provide an update on the Mosgiel Bus services, including school service, use of Hagart Alexander Drive (instead of Doon Street) for the loop bus and extra Mosgiel to City services.

GOVERNANCE SUPPORT OFFICER'S REPORT

Department: Civic

EXECUTIVE SUMMARY

- 1 This report is to inform the Mosgiel-Taieri Community Board on activities relevant to the Board's area including:
 - a) Project Fund
 - b) Seddon Park Play Improvements
 - c) Submission – Resource Consent Application Smooth Hill Landfill
 - d) Mosgiel Rotary Club - Firewood
 - e) Correspondence
 - f) Currently Consulting On.

RECOMMENDATIONS

That the Board:

- a) **Notes** the Governance Support Officer's Report.
- b) **Consider** the request from the Mosgiel Rotary Club to donate the firewood.

Project Fund

- 2 The Board has been allocated \$10,000 for the 2021/2022 financial year. There have been no funds allocated in the current financial year.

Seddon Park Play Improvements

- 3 The Seddon Park playground will have new pieces of play equipment (Basketball courts (half size) and hoop) in Seddon Park in the current financial year.
- 4 A new pump track will also be installed at Seddon Park in the 2023/24 financial year. Because the pump track will be a significant piece of equipment we will be carrying out community consultation and working through a design based on the feedback. At the same time we hope

to improve the current BMX track. Feedback/consultation will start on the pump track towards the middle of this year.

Fire Wood – Rotary Club of Mosgiel

- 5 At the Board meeting held on 14 April 2021 the Board resolved

Moved (Brian Miller/Dean McAlwee):

That the Board:

Recommended that the Rotary Club of Mosgiel be the recipient of the wood from the Blue Gum tree with the following condition:

- *the proceeds be used towards the erection of the fencing for the Mosgiel sign.*

1 Motion carried (MTCB/2021/023)

- 6 Since then the Rotary Club of Mosgiel have advised that they would prefer to donate the firewood to families in need and seek the Board's approval to do this.

Correspondence

Outward

- 7 Submission on Resource Consent Application for the Smooth Hill Landfill (Appendix A)

Inward

- 8 Information relating to the Hearings Process for the Resource Consent Application for the Smooth Hill Landfill (Appendix B)
- 9 Taieri Age Connect (Appendix C)

Roadworks Schedule

- 11 Information on current notified road closures and the roadworks schedule (a weekly list of programmed works) for Council's maintained roads is available on the DCC website via these links: <https://www.dunedin.govt.nz/news-and-events/public-notice/roadworks-schedule> and <https://www.dunedin.govt.nz/news-and-events/public-notice/notified-road-closures>.

DCC currently consulting on

Strath Taieri Key Vehicle and Pedestrian routes (earthquake-prone buildings)

<https://tinyurl.com/2p8vb5dh>

Intention to enter into Lease Outram Bowls Skerries Street Recreation Reserve

<https://tinyurl.com/33vr8e6e>

ACTIONS/UPDATES

Board members (or members of the public) wishing to advise Council of any operational issues or concerns, e.g. potholes, burst pipes, overgrown vegetation etc are reminded to ring the DCC Customer Services Agency on 03 477-4000, or email on dcc@dcc.govt.nz. For non-urgent matters contact council via the online "Fix it form" <https://www.dunedin.govt.nz/do-it-online/report/fix-it-form>

If issues and concerns are not dealt with in a timely manner, Board members should contact either the Governance Support Officer or the Senior Staff Member appointed to the Board.

Signatories

Author:	Jenny Lapham - Governance Support Officer
Authoriser:	Clare Sullivan - Manager Governance

Attachments

	Title	Page
↓A	Submission	23
↓B	Hearing Dunedin City Council - Smooth Hill Landfill Resource Consent Application	24
↓C	Taieri Age Connect	26

SUMMARY OF CONSIDERATIONS
Fit with purpose of Local Government

This decision enables democratic local decision making and action by, and on behalf of communities.

Fit with strategic framework

	Contributes	Detracts	Not applicable
Social Wellbeing Strategy	<input checked="" type="checkbox"/>	<input type="checkbox"/>	<input type="checkbox"/>
Economic Development Strategy	<input type="checkbox"/>	<input type="checkbox"/>	<input checked="" type="checkbox"/>
Environment Strategy	<input type="checkbox"/>	<input type="checkbox"/>	<input checked="" type="checkbox"/>
Arts and Culture Strategy	<input type="checkbox"/>	<input type="checkbox"/>	<input checked="" type="checkbox"/>
3 Waters Strategy	<input type="checkbox"/>	<input type="checkbox"/>	<input checked="" type="checkbox"/>
Spatial Plan	<input type="checkbox"/>	<input type="checkbox"/>	<input checked="" type="checkbox"/>
Integrated Transport Strategy	<input type="checkbox"/>	<input type="checkbox"/>	<input checked="" type="checkbox"/>
Parks and Recreation Strategy	<input type="checkbox"/>	<input type="checkbox"/>	<input checked="" type="checkbox"/>
Other strategic projects/policies/plans	<input type="checkbox"/>	<input type="checkbox"/>	<input checked="" type="checkbox"/>

Māori Impact Statement

There are no known impacts for Maori.

Sustainability

There are no implications.

LTP/Annual Plan / Financial Strategy /Infrastructure Strategy

There are no implications.

Financial considerations

There are no financial implications. Funding requests can be met within the Board's project fund.

Significance

This decision is considered low significance in terms of the Council's Significance and Engagement Policy.

Engagement – external

There has been no external engagement.

Engagement - internal

Internal engagement has occurred with appropriate staff members.

Risks: Legal / Health and Safety etc.

There are no risks.

Conflict of Interest

There are no known conflicts of interest.

Community Boards

This report provides information on activities in or relevant to the Board's area.



**MOSGIEL-TAIERI
COMMUNITY BOARD**

50 The Octagon | Dunedin 9015 | PO Box 5045 | Dunedin 9058 | New Zealand
E dec@dcc.govt.nz P +64 3 477 4000 www.dunedin.govt.nz

2 November 2021

Board Submission to ORC Re DCC Resource Consent for Smooth Hill Land Fill

The Mosgiel Taieri Community board has a neutral stance regarding the proposed landfill at Smooth Hill.

However, the board wishes to highlight the following areas for consideration

Management plan

Consideration to be given to the impact on the community with additional truck movements during construction and to service the landfill once built.

Natural Disasters

Ensure that appropriate conditions are put in place to mitigate against leachate and other contaminants leaking from landfill due to natural disasters i.e, fractures, landslips and flooding or any other reason and impacting on waterways and subsoil.

Ensure that trucks are appropriately covered to avoid contamination from rubbish being spilt during transportation from transfer stations to the rubbish disposal site.

Ensure all truck movements meet NZTA requirements.

Alternative landfill sites

The Board would like the City Council to provide information on alternative sites considered and commit to undertaking investigations into other rubbish disposal methods.

Joy Davis
Chairperson
Mosgiel Taieri Community Board

From: Consents Support <consents.support@orc.govt.nz>

Sent: Friday, January 21, 2022 1:58 PM

Subject: Hearing Dunedin City Council - Smooth Hill Landfill - RRM20.280 and LUC-2020-405

Good afternoon,

Hearing – RM20.280 and LUC-2020-405- Dunedin City Council – Smooth Hill Landfill

We have received a submission from you regarding Dunedin City Council's application for consents for the proposed Smooth Hill landfill in Brighton. The purpose of this email is to provide you with a general update on the application and the next steps.

The next step for the application is for it to go to a hearing, where independent decision makers will consider the application and all information including your submission.

The official hearing date has not been set yet, but the hearing is likely to take place in early to **mid-May 2022 in Dunedin**. We will be in contact with you again once the hearing date and venue has been confirmed and we will also be asking you if you want to come and speak to your submission at the hearing.

Whether or not you come and talk to the decision makers about what is in your submission is completely up to you. However, we will need to know if you are going to do this so we can set up a timetable for the hearing - so you may want to start thinking about this now. Your submission and any concerns will be considered by the independent decision makers even if you do not come and speak to it. Even if you do not speak to your submission, you can still come and listen to the hearing.

Please find below links to Council's website and information regarding the submission process – what to expect at the hearing and what is expected of you when presenting your submission. If

you have any questions or concerns then please let us know.

[Submissions Process | Otago Regional Council \(orc.govt.nz\)](#)

[Submitters Guideline | Otago Regional Council \(orc.govt.nz\)](#)

Kind regards,

The Consents Team



P 0800 474 082
consents.support@orc.govt.nz
www.orc.govt.nz

Important notice
This email contains information which is confidential and may be subject to legal privilege. If you are not the intended recipient, you must not peruse, use, disseminate, distribute or copy this email or attachments. If you have received this in error, please notify us immediately by return email or telephone (03 474-0827) and delete this email. The Otago Regional Council accepts no responsibility for changes made to this email or to any attachments following the original transmission from its offices. Thank you.



3 December 2021

Mosgiel Taieri Community Board
Dunedin City Council

Dear Board Members

**MEMORIAL PARK ACCESSWAY LIGHTING
ACCESS RUNNING BETWEEN LIBRARY & MOSGIEL SENIOR CITIZENS HALL**

I am the President of Taieri Age Connect Inc (TAC) which operates the Mosgiel Senior Hall (at the rear of and sharing facilities with the St John Centre and Ambulance Station) and operates a community information and social hub and other recreational and social activities for our over 55s. The Hall is also the venue other community activities operated by other community organisations who regularly use the Hall.

The public accessway runs between the Hall and Mosgiel Library from Hartstonge Avenue into Memorial Park, providing access to and from the Park. Apart from limited light spill over from the buildings there is no dedicated lighting for the public accessway.

We raise this matter as a matter of public safety, both for our members and clientele and other members of the public using the accessway. There has also been a history of criminal damage in and around Memorial Park, including smashed windows to the hall, setting fire to playground equipment and destruction of signs.

Last year TAC undertook major upgrades to the Hall, this included installing new double glazed windows to replace the existing single glazed windows. Two of the large new windows have been attacked twice recently and require replacement. We thank the Chair of the Board for visiting to view the damage and the lack of effective public lighting in the accessway.

Finally, I ask that you note that the building complex TAC and St John occupy owe their origin to local community fund raising and this, together with the services they provide, makes it a valued community facility deserving of being illuminated and protected.

Thank you for your consideration and support of this request.

Yours sincerely



Trish Didham

President – Taieri Age Connect







NAMING OF ONE NEW ROAD AND ONE NEW PRIVATE ROAD, MOSGIEL

Department: Transport

EXECUTIVE SUMMARY

- 1 This report seeks support from the Mosgiel-Taieri Community Board on the proposed naming of two new roads in Mosgiel.
- 2 The new road names proposed by the developer are:
 - ‘Telford Street’ or ‘Laxford Street’ for the new road forming part of the Highland Park subdivision located at Hagart-Alexander Drive, Mosgiel. Both options comply with the DCC Road Naming Policy.
 - ‘Puddy Lane’ or ‘Daffodil Lane’ for the private way as part of the subdivision located at Paterson Road Wingatui, Mosgiel. Both options comply with the DCC Road Naming Policy.

RECOMMENDATIONS

That the Board:

- a) **Supports** naming of a new private way off Armadale Street near Hagart-Alexander Drive, Mosgiel as ‘Telford Street’.
- b) **Supports** naming of a private way off Paterson Road Wingatui, Mosgiel as ‘Puddy Lane’.

BACKGROUND

- 3 The DCC Road Naming Policy provides the framework for timely and consistent naming of roads that reflect the identity of the local community. The DCC Road Naming Policy requires that Community Boards consider proposed names for roads in their area. For reference, the Road Naming Policy and Road Naming Procedure can be accessed on the DCC website at www.dunedin.govt.nz/road-naming.
- 4 The new public road to be named is part of the Highland Park subdivision on the land located at 66 Hagart-Alexander Drive, Mosgiel.
- 5 The private way to be named is part of a subdivision located at 12, 14, 16 & 18 Paterson Road Wingatui, Mosgiel.

DISCUSSION

- 6 The table presented below provides a summary of the road names proposed by property developers or surveyors, and their compliance with the Road Naming Policy. Additional details, including a full assessment for each proposed road name, evidence of consent where relevant and geographic details of the new roads are provided in attachments A to G.
- 7 It should be noted that the Road Naming Policy places less weight on the appropriateness criteria with respect to private ways.

Summary of proposed road names

Development details	Location of Road	Proposed Road Name	Alternative Road Name	Recommended Road name
66 Hagart-Alexander Drive SUB-2021-94 & LUC-2021-286	New road off Armadale Street	Telford Street	Laxford Street	Telford Street
12, 14, 16 & 18 Paterson Road Wingatui SUB-2016-35 & LUC- 2016-197 & LUC-2016-346	Private way off Paterson Road	Puddy Lane	Daffodil Lane	Puddy Lane

New public road-66 Hagart-Alexander Drive, Mosgiel

- 8 The developer has proposed **‘Telford Street’** or **‘Laxford Street’** as potential names for the road to be named coming off Armadale Street, noting that **‘Telford Street’** was preferred over or **‘Laxford Street’**.
- 9 The options proposed relate to family names or locations connected to Scotland and are consistent with the established naming theme for the subdivision. According to the applicant, ‘Telford’ refers to Thomas Telford, who was a civil engineer that designed numerous infrastructure projects in Scotland. ‘Laxford’ relates to the Laxford Bridge and river of the same name, located in northwest Scotland.
- 10 Both names comply with the criteria in the Road Naming Policy. **‘Telford Street’** is the preferred name of the applicant and is recommended for approval.

New private way 12, 14, 16 & 18 Paterson Road Wingatui, Mosgiel

- 11 The applicant proposed **‘Puddy Lane’** as the preferred option and **‘Daffodil Lane’** as the alternative road name for the access to the subdivision being developed at Paterson Road.
- 12 For **‘Puddy Lane’**, the name has significance as it relates to a former owner of the land, Elaine and Lesley Puddy. According to the applicant, they were active members of the Wingatui Community from 1955. Lesley was a founding member of the Community Hall Society and helped significantly with the construction of the hall. Elaine was involved in community activities, particularly fundraising. They both cleared the property of a large amount of gorse and started growing tomatoes commercially. One of the two tomato houses on the property, was a known landmark in the district and the section was affectionately known in the area as

the “Puds” place. The applicant has provided evidence from relatives of Elaine and Lesley Puddy supporting the proposal (Attachment G).

- 13 **‘Daffodil Lane’** has some geographical significance as it relates to a common perennial that was planted on the land of the development.
- 14 Both names comply with the appropriateness criteria of the Road Naming Policy. **‘Puddy Lane’** is the preferred name of the applicant and is recommended for approval.

OPTIONS

Option One – Recommended Option-The Board supports naming of one new road at 66 Hagart-Alexander Drive and one new private way at 12, 14, 16 & 18 Paterson Road as one of the options proposed

Advantages

- The road will be named, and landowners gain a street address allowing them to progress with building and access to services.

Disadvantages

- No disadvantages have been identified.

Option Two – Status Quo- The Board does not support naming of one new road at 66 Hagart-Alexander Drive and one new private way at 12, 14, 16 & 18 Paterson Road as one of the options proposed

Advantages

- There are no significant advantages identified with this option.

Disadvantages

- The road will not have a name which will inconvenience new property owners within the development.

NEXT STEPS

- 15 If the proposed names of **‘Telford Street’** or **‘Laxford Street’** are supported by the Community Board, officers will request formal approval from the Infrastructure Services Committee.
- 16 If the proposed names of **‘Puddy Lane’** or **‘Daffodil Lane’** are supported by the Community Board, officers will request formal approval from the Infrastructure Services Committee.

Signatories

Author:	Paula Barragan - Policy Analyst - Transport Regulation
Authoriser:	Jeanine Benson - Group Manager Transport Simon Drew - General Manager Infrastructure and Development

Attachments

	Title	Page
↓A	Hagart Alexander Drive-Assessment for Telford Street	36
↓B	Hagart-Alexander Drive-Assessment for Laxford Street	37
↓C	Map Hagart-Alexander Dr-Highland Park Stage 15 Road Names	38
↓D	Paterson Road-Assessment for Puddy Lane	39
↓E	Paterson Road-Assessment for Daffodil Lane	41
↓F	Map Paterson Road-Puddy or Daffodil Lane	42

SUMMARY OF CONSIDERATIONS

Fit with purpose of Local Government

This decision supports the social, environmental and cultural well-being of communities in the present and for the future

Fit with strategic framework

	Contributes	Detracts	Not applicable
Social Wellbeing Strategy	<input type="checkbox"/>	<input type="checkbox"/>	<input checked="" type="checkbox"/>
Economic Development Strategy	<input type="checkbox"/>	<input type="checkbox"/>	<input checked="" type="checkbox"/>
Environment Strategy	<input type="checkbox"/>	<input type="checkbox"/>	<input checked="" type="checkbox"/>
Arts and Culture Strategy	<input type="checkbox"/>	<input type="checkbox"/>	<input checked="" type="checkbox"/>
3 Waters Strategy	<input type="checkbox"/>	<input type="checkbox"/>	<input checked="" type="checkbox"/>
Spatial Plan	<input checked="" type="checkbox"/>	<input type="checkbox"/>	<input type="checkbox"/>
Integrated Transport Strategy	<input type="checkbox"/>	<input type="checkbox"/>	<input checked="" type="checkbox"/>
Parks and Recreation Strategy	<input type="checkbox"/>	<input type="checkbox"/>	<input checked="" type="checkbox"/>
Other strategic projects/policies/plans	<input checked="" type="checkbox"/>	<input type="checkbox"/>	<input type="checkbox"/>

This is an administrative function

Māori Impact Statement

The names proposed do not present any impact for Māori

Sustainability

There are no implications for sustainability

LTP/Annual Plan / Financial Strategy /Infrastructure Strategy

There are no implications for the 10 year plan

Financial considerations

There are no financial implications

Significance

The significance of this decision is considered low in terms of the Council's Significance and Engagement Policy

Engagement – external

There has been engagement with the developer

Engagement - internal

There has been engagement within the Transport Group

Risks: Legal / Health and Safety etc.

There are no known risks

Conflict of Interest

There are no known conflicts of interest

Community Boards

The new road and new private way are located within the Mosgiel-Taieri Community Board area, and support is sought from the Board

Dunedin City Council proposed road name assessment
Assessment for a public road off Armadale Street, Dunedin

Proposed road name	Telford Street (Preferred option)
Description	The name is consistent with an established road naming theme in the subdivision that uses Scottish names

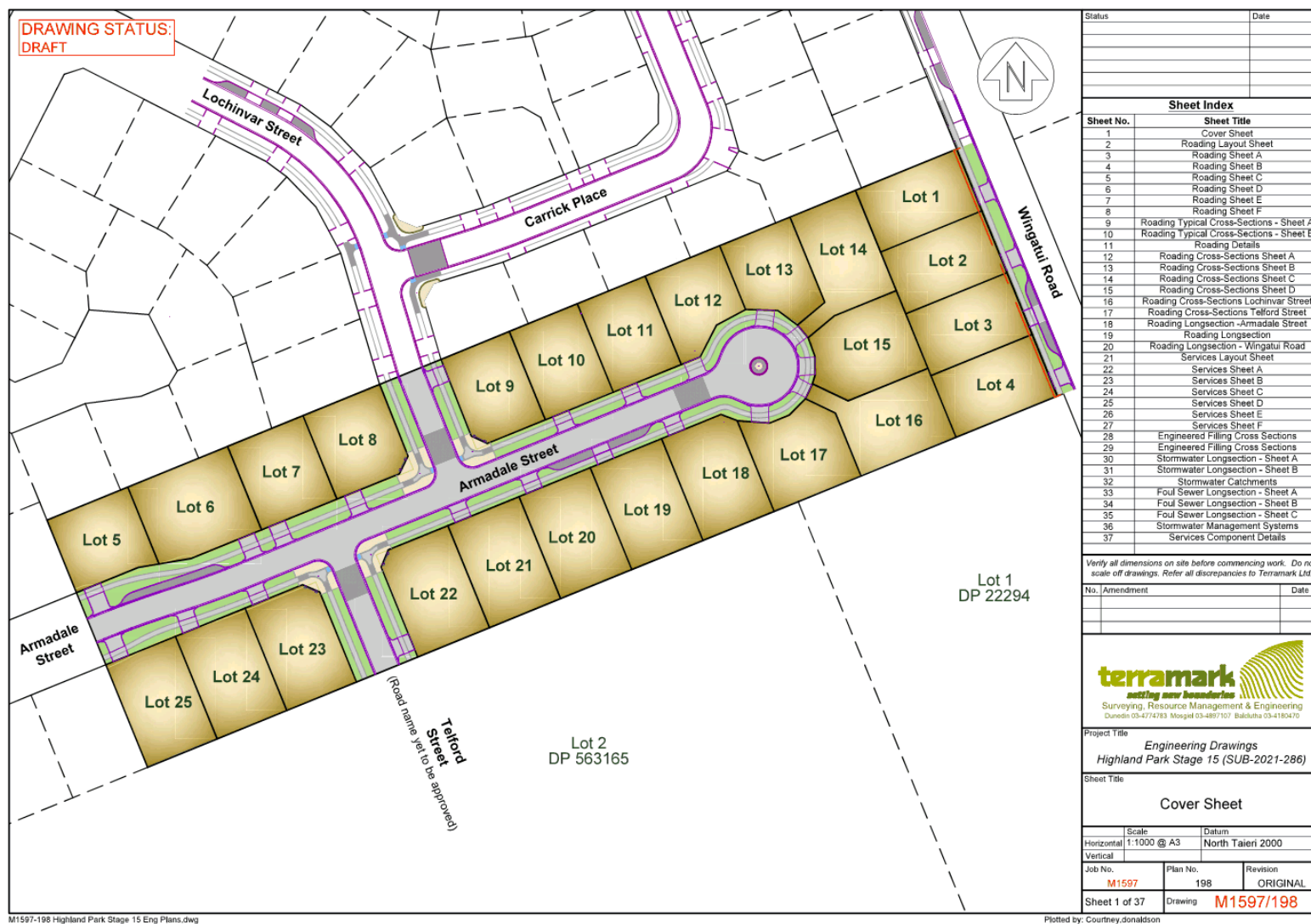
Road Naming Policy criteria	Complies	Transport comment
New road names shall not be the same as, or similar to, existing road names within the city	Yes	'Telford' is not the same as, or similar to any other road names in Dunedin
Roads are to have only one name	Yes	'Telford' complies. The road has no other name
Roads names must be spelled correctly, interpreted correctly, and not be offensive. Names must reflect historical, geographical or cultural significance associated with the area, a common or established theme in the area or the name of a noteworthy person	Yes	This road naming process is for the 15th stage of the Highland Park Subdivision. The proposal follows the established theme for the subdivision, using Scottish names or locations for road names. According to the applicant, 'Telford' refers to Thomas Telford, who was a civil engineer that designed numerous infrastructure projects in Scotland. The proposal is consistent with the Scottish connection adopted throughout the subdivision
Roads should not be named after any commercial organisation or any living or recently deceased person	Yes	The name 'Telford' does not relate to any commercial, any living or recently deceased person
Road names must not be anagrams, amalgamations or derivatives of people's names	Yes	'Telford' is not an anagram, amalgamation or derivative of people's names
Names should be 15 characters or less including spaces but excluding suffix	Yes	'Telford' is 7 characters excluding the suffix
Short names should be proposed for short streets for mapping purposes	N/A	N/A
Road name suffix	Yes	Applicant proposes 'Street' as the suffix. The Road Naming Policy defines 'Street' as "A township carriageway that has buildings usually on both sides". Staff consider this suffix appropriate for the road
Community Board	Yes	Mosgiel-Taieri Community Board has been consulted at its meeting of 9 of February 2022 and has not raised objections to the proposal
Consultation	Yes	Applicant has advised that the naming of this road will not affect residents nearby

Overall assessment	'Telford Street' complies with the Road Naming Policy
---------------------------	--

Dunedin City Council proposed road name assessment
Assessment for a public road off Armadale Street, Dunedin

Proposed road name	Laxford Street (Alternative option)
Description	The name is consistent with an established road naming theme in the subdivision that uses Scottish names

Road Naming Policy criteria	Complies	Transport comment
New road names shall not be the same as, or similar to, existing road names within the city	Yes	'Laxford' is not the same as, or similar to any other road names in Dunedin
Roads are to have only one name	Yes	'Laxford' complies. The road has no other name
Roads names must be spelled correctly, interpreted correctly, and not be offensive. Names must reflect historical, geographical or cultural significance associated with the area, a common or established theme in the area or the name of a noteworthy person	Yes	This road naming process is for the 15th stage of the Highland Park Subdivision. The proposal follows the established theme for the subdivision, using Scottish names or locations for road names. According to the applicant, 'Laxford' relates to the Laxford Bridge and river of the same name, located in northwest Scotland. The proposal is consistent with the Scottish connection adopted throughout the subdivision
Roads should not be named after any commercial organisation or any living or recently deceased person	Yes	The name 'Laxford' does not relate to any commercial, any living or recently deceased person
Road names must not be anagrams, amalgamations or derivatives of people's names	Yes	'Laxford' is not an anagram, amalgamation or derivative of people's names
Names should be 15 characters or less including spaces but excluding suffix	Yes	'Laxford' is 7 characters excluding the suffix
Short names should be proposed for short streets for mapping purposes	N/A	N/A
Road name suffix	Yes	Applicant proposes 'Street' as the suffix. The Road Naming Policy defines 'Street' as "A township carriageway that has buildings usually on both sides". Staff consider this suffix appropriate for the road
Community Board	Yes	Mosgiel-Taieri Community Board has been consulted at its meeting of 9 of February 2022 and has not raised objections to the proposal
Consultation	Yes	Applicant has advised that the naming of this road will not affect residents nearby
Overall assessment	'Laxford Street' complies with the Road Naming Policy	



Dunedin City Council proposed road name assessment
Assessment for a private way-14, 18 Paterson Road, Dunedin

Proposed road name	Puddy Lane (Preferred option)	
Description	The name refers to the original owners of the land	
Road Naming Policy criteria	Complies	Transport comment
New road names shall not be the same as, or similar to, existing road names within the city	Yes	'Puddy' is not the same as, or similar to any other road names in Dunedin
Roads are to have only one name	Yes	'Puddy' complies. The road has no other name
Roads names must be spelled correctly, interpreted correctly, and not be offensive. Names must reflect historical, geographical or cultural significance associated with the area, a common or established theme in the area or the name of a noteworthy person	Yes	According to the applicant, Elaine and Lesley Puddy were active members of the Wingatui Community since 1955. Lesley was a founding member of the Community Hall Society and helped significantly with the construction of the hall. Elaine was often involved in community, particularly with fundraising activities. They both cleared the property of a large amount of gorse and began growing tomatoes commercially. One of the two tomato houses on the property, was a known landmark in the district and the section was affectionately known in the area as the "Puds" place.
Roads should not be named after any commercial organisation or any living or recently deceased person	Yes	The name 'Puddy' relates to Elaine and Lesley Puddy who passed away on 2002 and June 2020 respectively (more than one year ago).
Road names must not be anagrams, amalgamations or derivatives of people's names	Yes	'Puddy' is not an anagram, amalgamation or derivative of people's names
Names should be 15 characters or less including spaces but excluding suffix	Yes	'Puddy' is 5 characters excluding the suffix
Short names should be proposed for short streets for mapping purposes	N/A	N/A
Road name suffix	Yes	Applicant proposes 'Lane' as the suffix. The Road Naming Policy defines 'Lane' as "A narrow way, path, country road or street. A narrow passage between hedges or buildings. Also used for service lanes". Staff consider this suffix appropriate for the name proposed
Community Board	Yes	Mosgiel-Taieri Community Board has been consulted at its meeting of 9 of February 2022 and has not raised objections to the proposal
Consultation	Yes	Applicant has advised that the naming of this road will not affect residents nearby Applicant has provided evidence from relatives of Elaine and Lesley Puddy supporting the proposal

Road Naming Policy criteria	Complies	Transport comment
Overall assessment	'Puddy Lane' complies with the Road Naming Policy	

Dunedin City Council proposed road name assessment

Assessment for a private way-14, 18 Paterson Road, Dunedin

Proposed road name	Daffodil Lane (Alternative option)	
Description	The name refers to the perennial plant of the amaryllis family	
Road Naming Policy criteria	Complies	Transport comment
New road names shall not be the same as, or similar to, existing road names within the city	Yes	'Daffodil' is not the same as, or similar to any other road names in Dunedin
Roads are to have only one name	Yes	'Daffodil' complies. The road has no other name
Roads names must be spelled correctly, interpreted correctly, and not be offensive. Names must reflect historical, geographical or cultural significance associated with the area, a common or established theme in the area or the name of a noteworthy person	Yes	The proposal relates to a common plant that was planted on the land of the development
Roads should not be named after any commercial organisation or any living or recently deceased person	Yes	The name 'Daffodil' does not relate to any commercial organisation or any living or recently deceased person
Road names must not be anagrams, amalgamations or derivatives of people's names	Yes	'Daffodil' is not an anagram, amalgamation or derivative of people's names
Names should be 15 characters or less including spaces but excluding suffix	Yes	'Daffodil' is 8 characters excluding the suffix
Short names should be proposed for short streets for mapping purposes	N/A	N/A
Road name suffix	Yes	Applicant proposes 'Lane' as the suffix. The Road Naming Policy defines 'Lane' as "A narrow way, path, country road or street. A narrow passage between hedges or buildings. Also used for service lanes". Staff consider this suffix appropriate for the name proposed
Community Board	Yes	Mosgiel-Taieri Community Board has been consulted at its meeting of 9 of February 2022 and has not raised objections to the proposal
Consultation	Yes	Applicant has advised that the naming of this road will not affect residents nearby
Overall assessment	'Daffodil Lane' complies with the Road Naming Policy	



COMMUNITY PLAN

For discussion and updating as appropriate.

Attachments

	Title	Page
A	Community Plan	44

CONTENTS

	Page No.
SECTION ONE	
Introduction	2
SECTION TWO: KEY INFORMATION	
2.1 Background	3
2.2 Board Members and their Contact Details	4
2.3 Map of Community Board Area	5
2.4 Our Community	5
SECTION THREE: PRIORITIES FOR OUR COMMUNITY	
3.1 New Priorities	7
3.2 Current Priorities	8
SECTION FOUR: COMMUNITY BOARD PROPOSED ACTIVITIES	10
SECTION FIVE: PLANS	
5.1 Emergency Plan – Community Board Response Plan	11
5.2 Other plans	11
5.3 Community Engagement Plan	11
SECTION SIX: COMMUNITY BOARD MEETING SCHEDULE	13

1 INTRODUCTION

This Community Board Community Plan summarises the needs and priorities of the communities within the Mosgiel-Taieri Community Board area for the 2019/2020 and 2022/2023

financial years, and the Dunedin City Council's (DCC) 2021-31 10-year plan. Its primary objective is to signal to the DCC those priorities for our community, with the ultimate goal that they are programmed into the DCC's 10-year plan and funded by the DCC. These priorities are shown in section 3 of this plan.

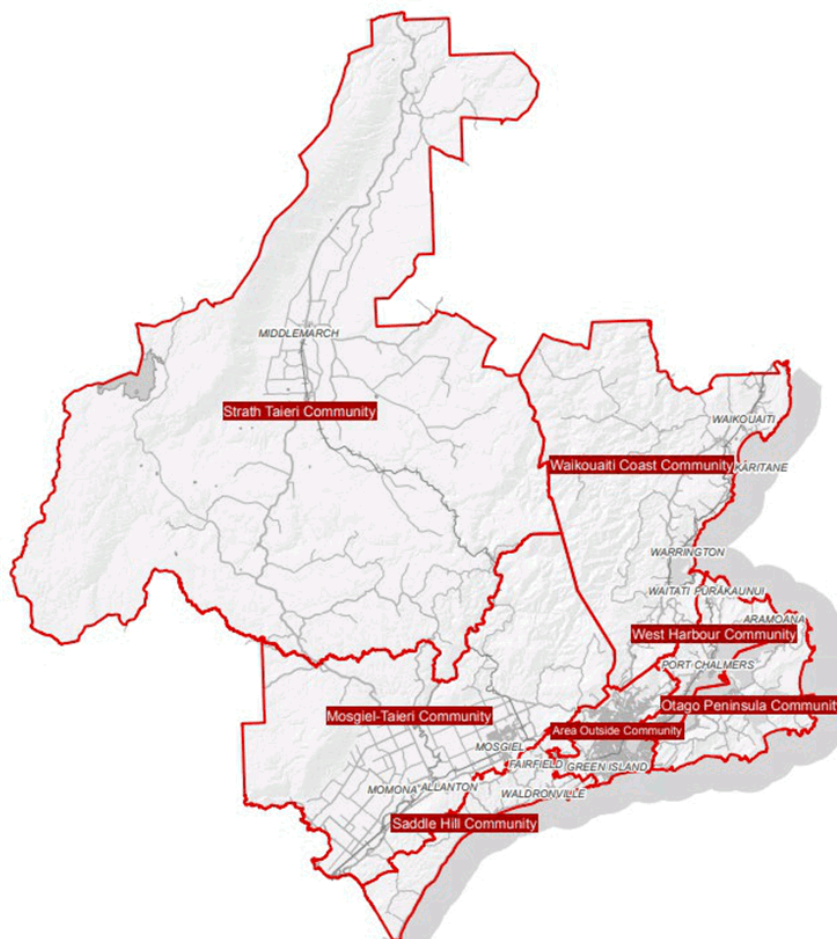
This Plan also includes activities that we, the Community Board plan to undertake. Our most important role is to be an advocate for our community, but we also proactively support our community in other ways, and these are set out in section 4 of this plan.

This Plan is subject to change and revision as needs arise and priorities alter.

2 KEY INFORMATION

2.1 BACKGROUND

The City of Dunedin has six Community Boards within its boundary, as shown in the map below.



Each Community Board has six elected members, and one councillor representative. The Community Board members are elected every three years as part of the local body elections. Community Boards must comply with the same rules and regulations as council, such as the Local Government Act.

The primary role of a Community Board is one of advocacy for its community. Each Community Board makes representations to the DCC on the priorities those boards have identified for their community area, that they would like to see included and funded in the council's annual plans and 10 year plans.

Any matters of an operational nature, e.g., the reporting of potholes, tree issues etc., are reported to council via the DCC's 477 4000 phone number, and do not form part of the Community Board's priorities.

Mosgiel-Taieri Community Board Community Plan adopted June 2020; updated 30 September 2020; 18 November 2020 and 14 April 2021

3

Each Community Board holds public meetings ??, and these meetings are advertised on the DCC website and in the Otago Daily Times. The meeting schedule for the 2021/2/2 calendar year is provided in Section 6 of this plan. The agenda's and minutes from those meetings are also available on the DCC website at <https://www.dunedin.govt.nz/council/council-meetings/agendas-and-minutes>

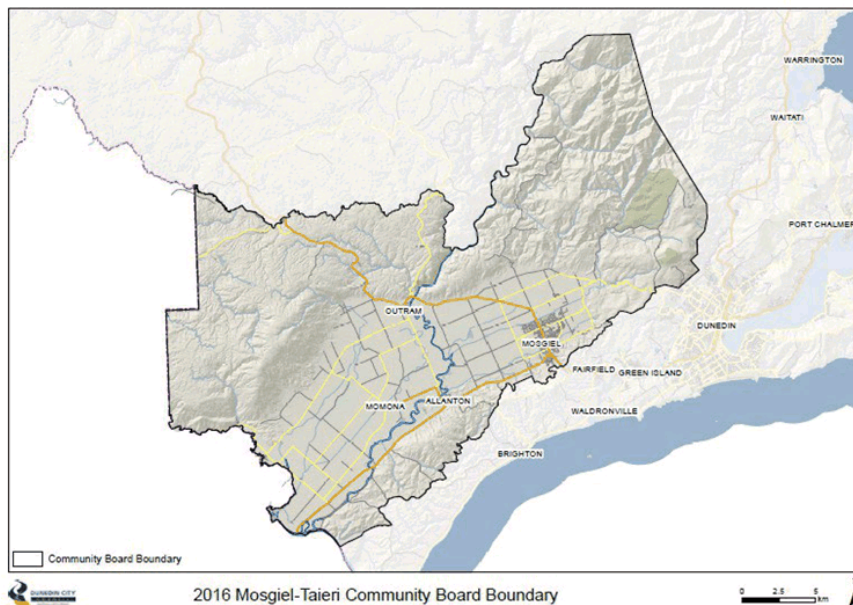
At the start of each meeting, there is a public forum session, which gives anyone from the community the opportunity to present to the board members their views on any topic. Anyone wishing to speak at public forum must make a request to speak at ? before the day of the meeting. They can do this via the Chair of the Community Board or contact a Governance Support Officer at the DCC at governance.support@dcc.govt.nz.

2.2 BOARD MEMBERS AND CONTACT DETAILS

Board members for the 2019-2022 triennium are as follows:

Name	Cell phone	Email
Joy Davis (Chair)	027 476 6047	joy.davis@xtra.co.nz
Dean McAlwee (Deputy Chair)	027 272 6132	deanmac@xtra.co.nz
Phillipa Bain	027 545 3193	phillipajbain@gmail.com
Martin Dillon	027 433 7800	dillionfamily1@xtra.co.nz
Brian Miller	027 228 2907	b.a.miller@actrix.co.nz
Brian Peat	021 089 73880	peat23@hotmail.com
Cr Carmen Houlahan (Councillor representative)	021 332 921	carmen.houlahan@dcc.govt.nz

2.3 MAP OF MOSGIEL-TAIERI COMMUNITY BOARD AREA



2.4 OUR COMMUNITY

May include:

- *Population Statistics as at –?*
- *Households*
- *Schools*
There are 7 schools in the Mosgiel-Taieri Community Board area:
Taieri College
East Taieri School
Elmgrove School
Silverstream Primary School
St Mary's School
Amana Christian School
Outram School
- *Demographics*
- *Geography*
The Taieri Plain is a low-lying, relatively flat expanse of land, located to the west of Dunedin City, covering an area of 21,000 hectares. Used for rural, residential, commercial and industrial activities, the Taieri Plain is home to approximately 19,000 people, mostly clustered in and around the urban areas of Mosgiel and Outram.

- *Hazards*
Much of the Taieri Plains is vulnerable to some level of risk associated with flooding. The effects of any given event will vary, however, depending on a range of factors, including antecedent conditions (such as soil moisture level and river flows), the location and magnitude of the rainfall event, the topography of the location, and the effectiveness of risk reduction measures including the lower Taieri Flood Protection Scheme and the East and West Taieri Drainage Schemes.

3 PRIORITIES FOR OUR COMMUNITY

3.1 New Priorities

We have identified the following new priorities for our community that we would like to see included in the Council's 2021-31 10-year plan. As noted earlier, this plan is subject to change, and so this list of priorities will be included on the agenda of each of our Community Board meetings

Details	Est. Cost	When in 10 year plan	Justification	Priority
Develop Outram Glen and Woodside This project was on 10 year Plan some years ago but deleted for some reason.		Year 1 of 10 year plan (2021/22)	These areas accommodate many people during public and holiday periods and the area requires more acceptable facilities.	1
Silver Spring Boulevard Public Reserve This project is seeking Council support in the developing and maintaining of the reserve in conjunction with local residents. This would require improved and increased planting and the installation of play equipment along with amenities such as rubbish bins		Year 2 of 10 year plan (2022/23)	The enhancement of this area would provide a recreational area for the local residents both young and old and improve the wellbeing of these residents.	3
Otta Seal Programme		Year 2 of 10 year plan (2022/23)	This programme is a more improved way for dust suppression	4
Completion of Church St Foot path Mosgiel,(outside of St Mary's School)		Year 2 of 10 Yr Plan (2022/2023)	Links St Marys School to existing footpaths, Health & Safety	2

3.2 Current Priorities

The following priorities for our community have been included in the Council's current 10-year plan (2018-28) and are priorities that are to be carried forward into the new 2021-31 10 year plan.

Details	Est. Cost	When in 10 year plan	Justification	Priority
Mosgiel Aquatics Facility Support the DCC Project and construction of the new pool.		Year 2 of the current 10-year plan.	Board will support in whatever way possible.	1
Transport to include Gordon Road Traffic Flows, Cycleways, Cycle Safety Pedestrian Safety including Disability Access–		Year 1?? of LTP (?? Of the Current 10 year plan	The alternate bypass route was approved by DCC in 1/12/2003 and funded." The Hagart-Alexander Drive Centre Street Link" remain the preferred option for the Eastern Arterial route for the Mosgiel Taieri Area." The Board urges that this be revisited, and options explored to reduce heavy traffic on Gordon Road. With the increase in population in the Board area there is a strong need to review all aspects of Transport	2
Infrastructure/Taieri Flood Mitigation – This is an ongoing priority, Sewerage, Storm Water and Water Supply structures are challenged under current growth rates/infill housing		Included in year 1 of the current 10 year plan	On-going evaluation of flooding risks and planning for mitigation of the same is vital. The Taieri landscape is constantly changing as a result of new developments, putting pressure on existing infrastructure facilities	3

Integrated Cycle Ways/Tunnels Trail from Dunedin to Waihola Support the building of new cycleways. The tunnels trail to connect with existing cycleways.		Included in year 1 of the current 10 year plan as part of the Urban Cycleways Budget	Project Manager has been appointed Feasibility study ongoing	4
Keep Dunedin/Mosgiel Beautiful- This is a Dunedin wide Plan		Included in current 10 year plan	The Taieri and especially Mosgiel has been neglected in recent years Eg: Street Presentations, Footpaths, Plants, Buildings etc	5
Community Development to include the promotion of local initiatives such as Party in the Park and Festival of the Plain. Support Neighbourhood connectedness, well being and resilience		Included year 1 in current 10 year plan	COVID-19 emergency has emphasised the need for connected communities. Active inclusive, local Community Groups are encouraged and supported.	6

4 COMMUNITY BOARD PROPOSED ACTIVITIES

The following table identifies those activities that we as a Community Board would like to deliver to our community. They will be undertaken and funded by the Community Board.

ACTIVITY DETAIL	WHEN (IDEAL)
Advocate for priorities to be included in the DCC 10 year plan.	
Update Community Engagement Plan to include major Interest Groups/Large Employers/Business Leaders and Organisations.	Ongoing -ensuring support of local businesses
Silverstream Beautification Project	Ongoing – COVID-19 has impacted progress on the Planting Project . Budget a. The area from Gordon Road to Wingatui Road requires attention
Celebrating Excellence for the Board area	Approved Candidates and their achievements, to be recognised on an installation in 2021
Emergency Plan	Dunedin City Council has a statutory role, as does the Otago Regional Council, under the Civil Defence Emergency Management Act to contribute to Civil Defence Emergency Management (CDEM) within the district. As part of this whole-of-city function, the Mosgiel-Taieri Community Board has responsibility for the interface between the community and Otago Civil Defence Emergency Management. Ongoing
Considerations	
Seal Velodrome Parking area	.
Transport Options Mosgiel to Outram	

5 PLANS

The Community Board has a number of plans supporting its activities. Our key planning documents are discussed below:

5.1 EMERGENCY PLAN – COMMUNITY BOARD RESPONSE PLAN

Introduction

The Dunedin City Council has a statutory role, as does the Otago Regional Council, under the Civil Defence Emergency Management Act to contribute to Civil Defence Emergency Management (CDEM) within the district. As part of this whole-of-city function, the Mosgiel-Taieri Community Board has responsibility for the interface between the community and Otago Civil Defence Emergency Management.

Status

The Mosgiel Taieri Community Emergency Response Group comprises of approximately 25 members representing a number of organisations/special interest groups.

<https://www.otagocdem.govt.nz/media/1383/mosgiel-taieri-community-guide.pdf>

5.3 COMMUNITY ENGAGEMENT

Introduction

Members of the community are invited to make a comment on the Board's Community Plan at any time. You may have a view on the Board's prioritised actions or may require the Board's assistance to progress an issue with the Dunedin City Council. You are welcome to comment on the entire plan, certain sections or a particular project.

We utilise Social Media and printed media such as the Otago Daily Times and The Star.

Ways to have your say on the Community Board's Community Plan

The Board is very keen to receive your comments on an on-going basis, and you may speak to your comments at any Board meeting. Members of the community are invited to provide feedback;

- *Verbally... by contacting a board member directly, anytime*
- *Written... addressed to the board, postal or email addresses below*
- *In person... to the Board at public events*
- *Social Media... Facebook www.facebook.com/Mosgiel-TaieriCommunityBoard*

Please clearly state the issue or suggestion you would like the Community Board to consider, or the specific action you would like to be taken.

Please send written communication to:

The Chairperson
Mosgiel-Taieri Community Board
c/- Dunedin City Council
PO Box 5045
Dunedin 9058

Email: joy.davis@xtra.co.nz

Mosgiel-Taieri Community Board Community Plan adopted June 2020; updated 30 September 2020; 18 November 2020 and 14 April 2021 **11**

6. COMMUNITY BOARD MEETING SCHEDULE

The table below provides details of our Community Board meetings through to December 2020.

MOSGIEL TAIERI COMMUNITY BOARD

MEETING SCHEDULE 2022

Thursday 10 February

Wednesday 30 March

Wednesday 8 June

Wednesday 3 August

Meetings will commence at 5.00 pm unless otherwise advised and will be held in the Downes Room, Mosgiel Library, unless otherwise advised.

PROJECT FUND

Department: Civic

EXECUTIVE SUMMARY

- 1 Information has been received regarding the completion of the Celebrating Excellence project which will cost approximately \$6680.00. (quote attached Appendix A). The Parks and Recreation Department will meet the installation costs and this amount will be confirmed at the meeting.
- 2 Mr Peat has requested that the Board allocate \$1989.50 for the installation of an honours Board. (Appendix B).

RECOMMENDATIONS

That the Board:

- a) **Approves/declines** the funding to complete the Celebrating Excellence Project (amount to be advised).
- b) **Approves/declines** funding of \$1989.50 for the installation of an honours Board.

Signatories

Author:	Jenny Lapham - Governance Support Officer
Authoriser:	Clare Sullivan - Manager Governance

Attachments

	Title	Page
A	Celebrating Excellence	57
B	Honours Board	70



DUNEDIN CITY COUNCIL MOSGIEL –TAIERI COMMUNITY BOARD
‘CELEBRATING EXCELLENCE’ WALL OF HONOUR – STAGE ONE
RATIONALE AND SCHEDULE OF COST ESTIMATES PREPARED 4 OCTOBER 2021

PROJECT DESCRIPTION

‘Celebrating Excellence’ is a project where local Mosgiel-Taieri people who have made an outstanding contribution to their community and nation are celebrated on a special wall of honour.

Initial recipients (selected 2018):

James Allan	Rugby
Brian Anderton	Horse racing and breeding
Trevor Bent	Athletics
Joe Brown	Entertainment and community service
Arthur Burns	Industry, employee advocacy and national politics
Peter Johnstone	Rugby
Jenny McDonald	Hockey
Barry Milburn	Cricket
Trudy Woodhouse (nee Painter)	Athletics

See the draft proofs of their biographies on pages 5 and 6.

Location:

In the garden courtyard between Mosgiel Memorial Garden, St John Ambulance and Senior Citizens Club in Hartstonge Avenue, Mosgiel. There are two walls on which the honours will appear and these are existing brick walls. The project will help to revitalise what is a “tired looking” courtyard.

Design rationale:

“Celebrating Excellence” is portrayed as a **kereru** flying free, reaching for the sky. This is supported by the Maori text “rere-tiketike” which translates to “fly high”. See page 4.

The kereru is significant in many ways:

- Kereru have national status, featuring on our \$20 bank note.
- Pigeons have a worldwide association as messengers.
- Kereru are outstanding flyers.
- In Maori legend, the kereru is associated with the illustrious demi-god Maui.
- Kereru play a vital part in the health of our forests as it is the only fruit eater left in New Zealand large enough to swallow big seed-containing fruit from trees.
- Kereru was an important food source for both Maori and early European settlers on the Taieri.
- Kereru have the proven ability to adapt to both rural and urban environments.
- Kereru are relatively common in Mosgiel and the Taieri.

The background features an abstract illustration of **woven fabric**, representing the weaving together of people and the historic significance of harakeke/flax and wool to the district. It is a design that is attractive with either a part and full contingent of plaques in place.

The background **black** is a colour steeped in Aotearoa New Zealand history. And black is an excellent neutral colour delivering strong design component contrast. The green is from kereru feathers.

The plaques are **circular** (300mm diameter) and feature the proud colours of the Taieri district – St Andrews blue and gold. It is intended that the overall visual effect is a vibrant celebration, in deliberate contrast to the sombre rectangular brass and concrete plaques found in a cemetery or on a memorial to the deceased.

location and postal **291 Chain Hills Road, RD1 Dunedin 9076** phone **03 489 8457** email **stew@adart.co.nz** web **www.adart.co.nz**

The text is a precised biography of each recipient written in a **casual style** to inform, entertain and resonate with readers. Each recipient's most outstanding achievements are highlighted and local public profile connections outside of these achievements are included where appropriate, e.g. Barry Milburn being a local butcher. Content is governed by a maximum line and word count (8 and 60 respectively).

It is envisaged the initial nine recipients will be joined in years to come by more Taieri heroes. There is space on the two panels for a total of 21 plaques.

A blank "plaque" printed on the panel skin promotes the live nature of the memorial, shows there are more recipients to follow and invites people to nominate their local heroes via the website. The wording reads:

*Time is an unfinished book
and every day is a new chapter.
Your Mosgiel-Taieri Community Board
aims to grow this gathering of local heroes,
celebrating excellence in the past and today.
Nominate your hero online at
www.mylittlelocal.co.nz/taieriexcellence (future website url to be advised)*

Legibility of body copy on plaques:

Body copy size 21pt, readable to 1.3 metres distance
Luminosity Colour Contrast Ratio (black on yellow): 10.93:1 = AAA Pass

PROJECT PARTNERS

Client, landscaping and infrastructure:

Mosgiel-Taieri Community Board of Dunedin City Council.
Dunedin City Council Parks and Recreation Services – John Brenkley and Scott McLean.

Graphic designer, biographical researcher, copywriter and project manager:

AdArt Brand Promotion – Stewart Robertson, co-owner and creative director. Taieri-based.
Has existing professional relationship with ProSigns. Both ProSigns and W Hamilton Building have been selected by Stewart for having the enthusiasm, capacity and highest quality capability to achieve an outstanding result at a fair and competitive price. See AdArt's capability statement on page 13.

Signmaker and co-installer:

ProSigns – Peter Rae, co-owner. Dunedin-based.
Has existing professional relationship with both AdArt Brand Promotion and W Hamilton Building.

Frame maker and co-installer:

W Hamilton Building – Greg Cramond, director. Mosgiel-based.
Has existing professional relationship with ProSigns.

COST ESTIMATES

CONCEPT ONE JULY 2019 – NOT ACCEPTED BEING OUTSIDE BUDGET

Large scale wood-laminate kereru wing with individual plaques (x9) fixed to structure.	
Concept, research, draft design and Photoshop simulation	1,800.00
Manufacture and installation of wall	59,350.00
Manufacture and installation of 9 plaques	345.50
Total ex-GST	61,495.50

CONCEPT TWO OCTOBER 2021

CREATIVE AND PROJECT MANAGEMENT – ADART BRAND PROMOTION

Two wall panels with 9 plaques	
New concept, line illustrations of kereru and background	360.00
Design of plaques exists from design one, as above	—
Research 9 recipients' biographies and source photographs of each	180.00
Write 9 precis biographies for plaques	120.00
Photoshop enhancement of 9 photographs	90.00
Finished artwork of 9 plaques, including typography	60.00
To complete print files and project manage printing and installation	135.00
Total ex-GST	945.00

SIGNMAKING – PROSIGNS

The plaques are printed on the same vinyl skins as the backgrounds (as against being individual plaques screwed on to the panels and therefore subject to vandals tearing them off the panels).

Panels H1200mm x W1790 and 1735mm featuring full colour print on self-adhesive vinyl adhered to Signbond ACM 4mm mounted on plywood and finished with anti-graffiti laminate. Quantity 2.

Total ex-GST	790.00
--------------	--------

Future updated skins: two at 2021 price, including installation, \$428.00 ex-GST.

TOTAL COST ESTIMATE EXCLUDING INSTALLATION AND GST	1,735.00
---	-----------------

INSTALLATION ESTIMATE – NOT INCLUDED IN COSTS
MOUNTING SIGNS ON WALLS – PROSIGNS

Installation of 2 sign panels – bolted to brick fence.	195.00	
--	--------	--

Total ex-GST		195.00
--------------	--	--------

Future updated skins: two at 2021 price, including installation, \$428.00 ex-GST.

TIMBER FRAMES AND CO-INSTALLATION – W HAMILTON BUILDING

A wooden frame will encapsulate each panel to achieve an attractive “finished” look and provide protection from the weather and potential vandals. Perspective drawings of the wall designs are shown on pages 7 and 8. Technical specifications and costings are shown on pages 9 and 10.

The recommended timber is iroko from a tree grown extensively in tropical western Africa. It is a very durable timber and is resistant to both rot and insect attack. It is commonly used for outdoor furniture and decking. Heartwood is usually a yellow to golden or medium brown (pictured right), with colour tending to darken over time. Often referred to as “poor man’s teak”, it is about one-third of the price of genuine teak. The timber supplier for this project sources iroko which is certified as a sustainable plantation-grown timber – see documentation on pages 11 and 12.

Native New Zealand timbers (e.g. totara) were discounted as there is a limited choice of extreme hardwearing hardwoods and these are in very short supply. However, we will continue to look for an indigenous New Zealand alternative.

Materials	2,950.00	
Labour	1,550.00	
Preliminary and general costs	450.00	
Total ex-GST		4,950.00

TOTAL COST ESTIMATE OF INSTALLATION EXCLUDING GST	5,145.00
--	-----------------

Terms and conditions:

- i. Dunedin City Council will be billed on a single umbrella invoice from Advertising & Art (Otago) Limited for the collective work of AdArt Brand Promotion and ProSigns. Excludes installation.
- ii. A Dunedin City Council purchase order will be required.
- iii. Prices as of October 2021, are subject to change, and exclude GST.
- iv. Dunedin City Council costs for the upgrade of the courtyard and gardens are unknown.

PANEL DESIGNS



PLAQUES

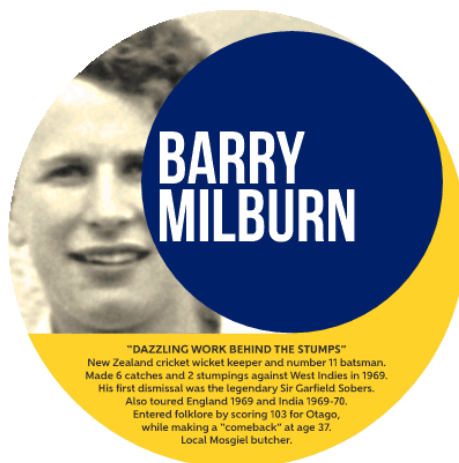
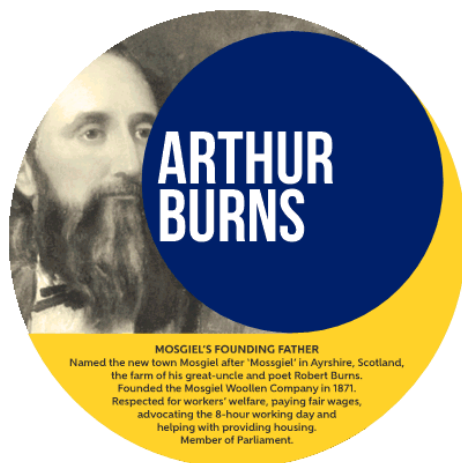
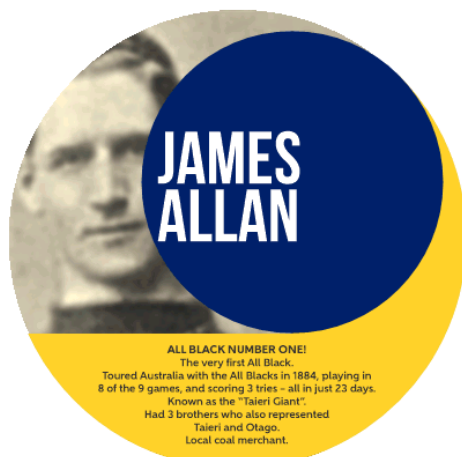
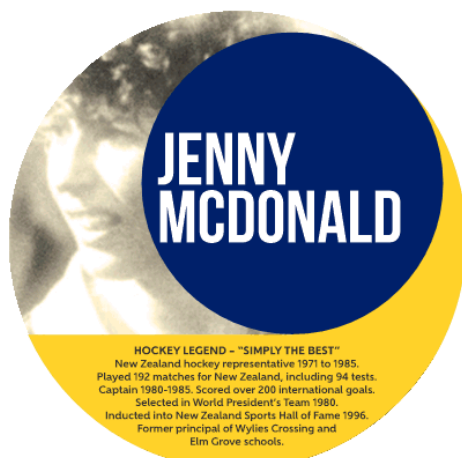


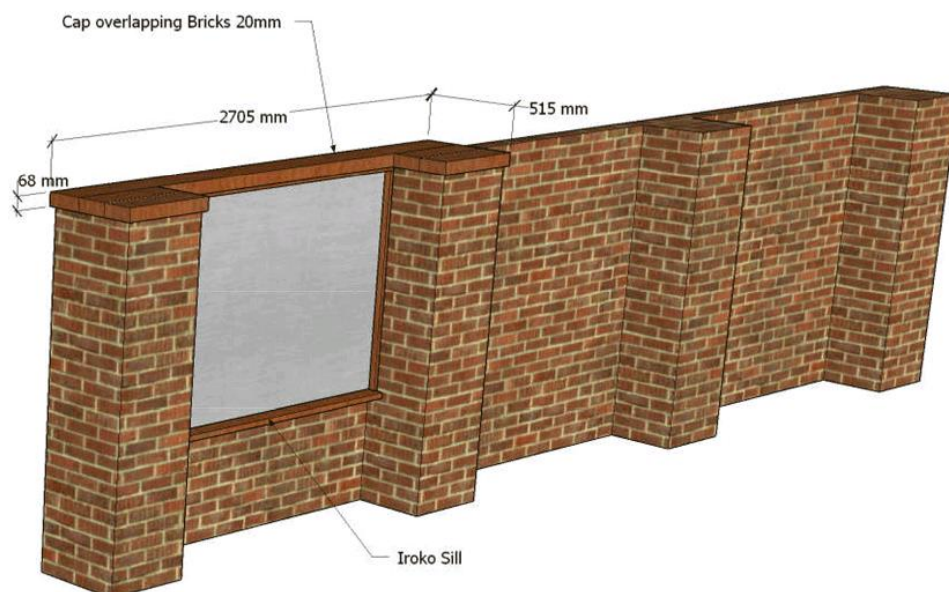
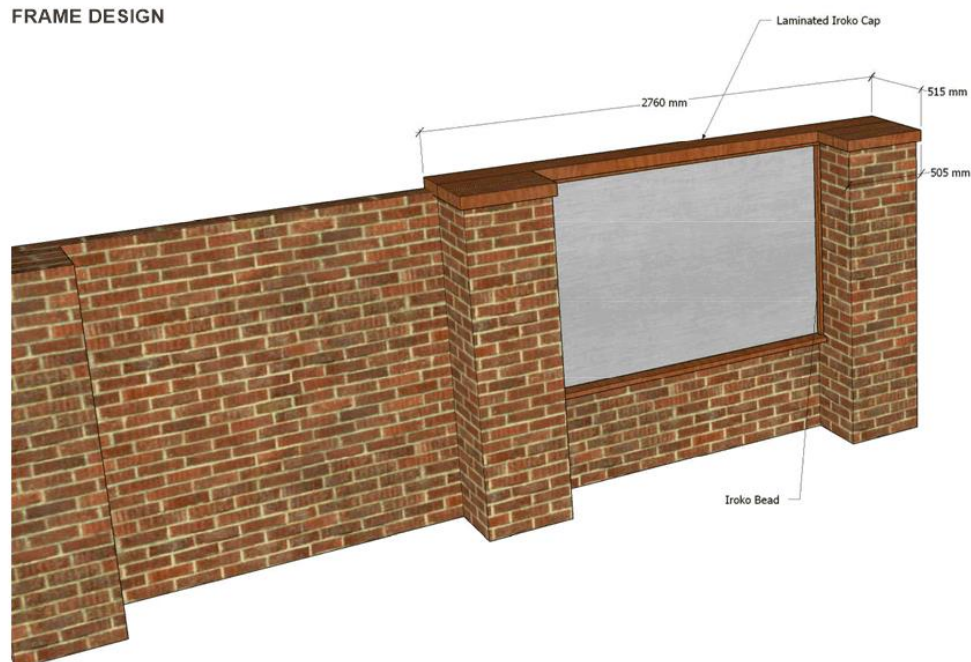


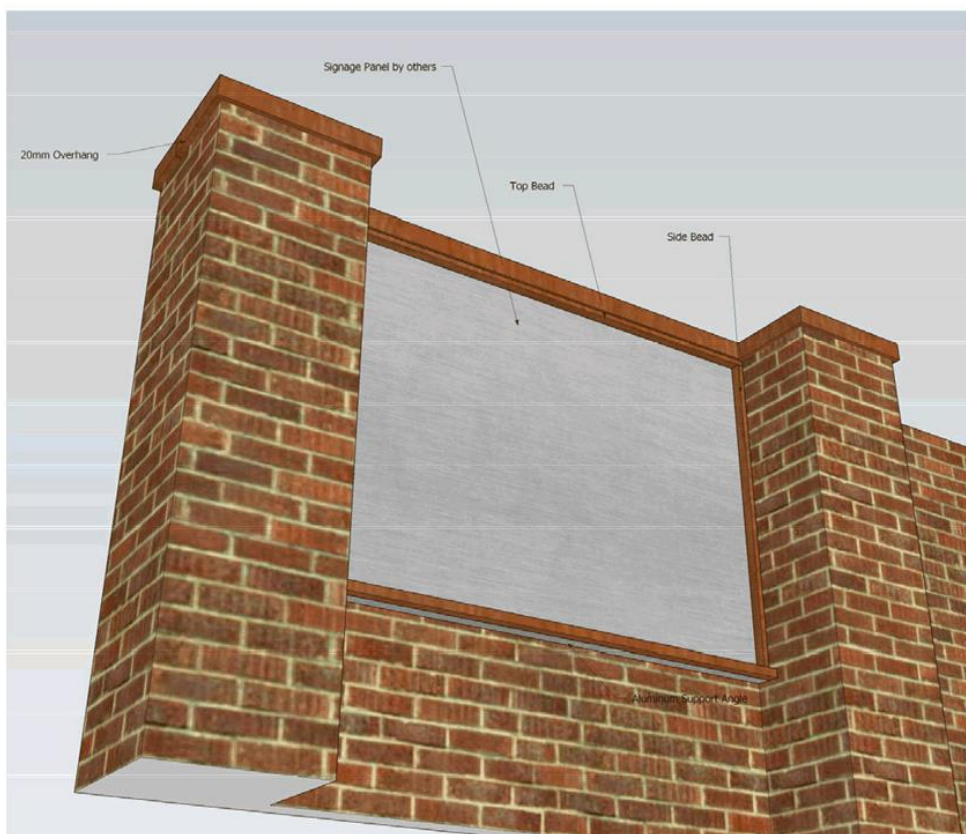
Photo to come



It is intended that recipients, or descendants of recipients, are given the opportunity to check the text and make corrections if necessary. They may also wish to provide "better" photos.

FRAME DESIGN





W HAMILTON BUILDING

Your Vision, Our Processes:
A Partnership in Success

Stew Robertson
AdArt Brand Promotion
291 Chain Hills Road, RD1
Dunedin 9076

Re – Celebrating Excellence Memorial Wall

Dear Stew,

Thank you for considering W Hamilton Building Ltd to be part of the proposed community project, that celebrates these distinguished people. Following our meeting and your brief please find below our quotation to carry out the works as described.

Proposed Scope of Work:

Supply materials, labour, and equipment to fabricate and install timber structure to encapsulate and support signage system.

Allowances:

- Procure Iroko Hardwood Planks to form laminated timber cap to brick wall and brick piers. Ex 150 x 76mm Kiln Dried Rough Sawn (machined to be dressed 4 sides approx. 140mm x 68mm)
- Procure Iroko Hardwood Planks to form support sill to underside of signage panels. Ex 100 x 76mm Kiln Dried Rough Sawn (machined to be dressed 4 sides approx. 90mm x 68mm)
- Procure aluminium support angle 50 x 50 x 4.5m rebated into timber sill to secure and support sill.
- Procure sundry materials to install structure (fixings, construction adhesive etc)
- Procure timber coating system, (Tinted Wood Oil – Resene or Dryden's)
- Offsite Labour to setup, machine, prepare and coat timber work.
- Onsite Labour to install timberwork and assist signage contractor to install signage system

Exclusions

No allowance for application of any required consents
No allowance for work to adjust landscaping
No allowance for removal of trees or plants
No allowance for works other than stated.
No allowance for works outside normal hours.

Qualifications

We will need to confirm the cost and availability of the Iroko timber closer to the time of ordering due to the current unpredictable nature of the supply chains.

Value of Works

Supply of Materials - \$2950.00 Ex GST
Labour – \$1550 Ex GST
Preliminary & General Costs – \$450.00 Ex GST

Subtotal - \$4950.00 Ex GST
GST - \$742.50
Total - \$5692.50

Availability

Based on our discussions we can meet your suggested January/February 2022 timeline. However, it is suggested we order the timber materials well in advance perhaps early to mid-December 2021 to ensure availability and price.

Timeline

We anticipate the following time to complete the works

2 Days to cut, machine, prepare and coat timber ready for install
3 -5 Days drying time for coating prior to install
1 Day install on site

W Hamilton Building Ltd are Registered Master Builders and Licensed LBP Practitioners. All quotes are valid for thirty days. All works are carried out under the Construction Contracts Act 2002. Payment is required 14 Days after date of the final invoice.

Should you have any further questions or require any clarification please contact our office. Alternatively, if you wish to proceed, please confirm in writing so that the contract documentation can be prepared.

Regards

Greg Cramond

Greg Cramond
Director
Email admin@whb.nz
Phone – 03 4890383

For and on behalf of
W Hamilton Building Ltd





Auckland

82 Henderson Valley Rd
Henderson
P 09 8360124
F 09 8360103
e - auck@bbstimbers.co.nz

Whangarei

27 Kioreroa Rd
Whangarei
p 09 4389358
f 09 4300455
e - office@bbstimbers.co.nz

Christchurch

14 Halwyn Drive
Hei Hei
p 03 3445591
f 03 3445592
e - chch@bbstimbers.co.nz

Environment - Third Party Certified Schemes

For peace of mind for both our company and our customers, the most effective method of ensuring timber products are legal or are from well managed forests, is to ensure they carry an independent third party certification scheme. BBS Timbers Ltd currently purchases timber under the following chain of custody schemes:



Programme for the Endorsement of Forest Certification (PEFC™)

PEFC™ is one of the world's leading and most used forest certification organisations. PEFC™ is an international non-profit, non-governmental organisation dedicated to promoting forest management through independent third party certification. PEFC™ is an umbrella organisation. It works by endorsing national forest certification schemes that are tailored to local priorities and conditions. Each national forest certification scheme undergoes rigorous third party assessment against PEFC™ standards. Currently BBS Timbers Ltd purchase timber products through the following PEFC™ endorsed programmes:

Canadian Standards Association (CSA) www.csa-fmforests.ca

Australian Forest Standards (AFS) <http://www.foreststandard.org.au/>

Sustainable Forestry Initiative (SFI) www.sfi-program.org

BBS Timbers Ltd also recognises a few legality programmes that do not carry full chain of custody but are considered an entry level certification and a stepping stone towards PEFC™ certification, where full chain of custody applies



Verification of Legal Origin (VLO)

The Rainforest Alliance Smartwood Program has developed a generic standard for verification of legal origin (VLO). It verifies that the timber originates from forest sources that have a legal right to harvest. It is considered a first step in proving that the source of timber is legal and the laws of the country have been met.

www.rainforest-alliance.org



Verified Legal Compliance (VLC)

Verified Legal Compliance (VLC) expands upon the VLO Smartwood Program. It not only ensures that timber harvested is from a legal source, it also takes into consideration other aspects of the harvesting and distribution of timber, including environmental protection, wildlife, water and soil conservation, workers health and safety and so on.

www.rainforest-alliance.org

Both VLO and VLC are considered a step in the process towards FSC certification.



CertiSource

CertiSource is a timber legality verification system, offering verified legal timber from Indonesia. CertiSource uses independent ISO accredited certification bodies to audit timber legality against CertiSource standard policies and procedures. Currently BBS Timbers Ltd import some of its timber from Indonesia with CertiSource certification.

www.certsources.co.uk



Forest Stewardship Council (FSC®)

FSC® has been recognised as an international organisation that provides a system for different stakeholders interested in forest issues to work towards responsible forest management.

In providing this system, FSC® promotes environmentally appropriate, socially beneficial, and economically viable management of the world's forests.

<https://nz.fsc.org/en-nz>

BBS Timbers Ltd 27 Kioreroa Rd, Whangarei, (Head Office)
Phone: 09 4389358 - Fax: 09 4300455 - email: office@bbstimbers.co.nz



Auckland

82 Henderson Valley Rd
Henderson
P 09 8360124
f 09 8360103
e - auck@bbstimbers.co.nz

Whangarei

27 Kioreroa Rd
Whangarei
p 09 4389358
f 09 4300455
e - office@bbstimbers.co.nz

Christchurch

14 Halwyn Drive
Hei Hei
p 03 3445591
f 03 3445592
e - chch@bbstimbers.co.nz

Iroko (West Africa)

Specification sheet



IROKO

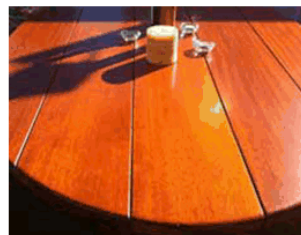
<u>Other Name(s):</u>	Odum
<u>Scientific Name:</u>	Chlorophora excelsa
<u>Distribution:</u>	West Africa
<u>Average Dried Weight:</u>	655 kg/M3
<u>Durability:</u>	Durable
<u>Janka Hardness:</u>	5.6 (kN)
<u>Modulus of Rupture/Bending Strength</u>	(87.6MPa)
<u>Modulus of Elasticity/ stiffness:</u>	(9.38GPa)
<u>Strength:</u>	8 (on scale 1-10)

Seasoning:

- Requires reasonable care in kiln drying to avoid degrade

Characteristics:

- It is variable in colour from yellow to fairly dark brown.
- Grain is typically interlocked.
- Texture is medium to coarse and even.
- It has neither taste nor odour.
- Darkens with age.



Working Qualities:

- Works with moderate ease with most hand and machine tools and finishes well.
- Stone-like calcareous deposits are sometimes present and these may cause damage to cutting edges.
- In planning quarter sawn material the cutting angle should be reduced to 15° to avoid picking-up the grain.
- It nails, screws, and glues well.
- Although requiring a grain filler the wood takes stain well and gives good results with polish.
- It can be cut into veneer and it has moderate steam-bending qualities.

Uses:

- It is suitable for high grade joinery, interior fittings, window frames, doors, staircases, heavy furniture and laboratory benches, bank and shop fittings, boat and vehicle building, wagon work and flooring.
- It is also suitable for piling, dock and other constructional work.

Product Attributes:

- Durable utility timber.
- Yellow brown timber, darkening with age.
- Machines well with care.
- Takes stains and polish well but may need grain filling.

BBS Timbers Ltd 27 Kioreroa Rd, Whangarei, (Head Office)
Phone: 09 4389358 - Fax: 09 4300455 - email: office@bbstimbers.co.nz
www.bbstimbers.co.nz



CAPABILITY OF ADART BRAND PROMOTION

AdArt Brand Promotion is a visual communications studio based in Chain Hills, Dunedin. Stewart Robertson is the creative director and Marie Ann Robertson is the business director. The company was established in 1980.

Stew is one of the south's leading signage strategists and designers.

Notable sign projects include:

Dunedin City Council

The story of Saddle Hill/Pukematamata is told on an interpretative panel located in the pocket park on the corner of Mosgiel's Factory and Gordon roads. Stewart researched and wrote the story, project-managed the Maori translation, produced the finished artwork and shot the photo of Saddle Hill/Pukematamata.

Dunedin City Council and Waka Kotahi New Zealand Transport Agency

A series of road safety campaigns placed on highway billboards, back-of-bus, newspaper advertisements and merchandise giveaways. The most memorable is the traffic light safety campaign "Don't squeeze the orange".

Yellow-eyed Penguin Trust

Ongoing projects producing signs for the Trust's reserves. Signs have to be resilient to the most hostile coastal weather conditions. Included identification, wayfinding (for walking tracks), promotional, information and regulatory signs. Also signage for YEPT's office and vehicles.

Otago Peninsula Trust

A large scale project to assess, design, print and install all signage (total 38) at the Royal Albatross Centre, Fort Taiaoroa and Richdale Observatory at Taiaoroa Head/Pukekura.

Naylor Love

Project and historic display panels for board room and training rooms at Naylor Love's Auckland office.

City Forests

Forest entrance signs.

Dunedin Airport

The complete signage package for the terminal building when it opened in 2005, carpark and access roads. Worked in collaboration with airport management and architects John (JR) Rogers (Wellington) and Nick Baker (Dunedin).

Dunedin Railway Station

The project involved removing all existing signs and posters – basically starting again – where Stewart determined the strategic purpose, wording, imagery, size and position of each sign. Comprised 19 new signs, reduced from over 40 incumbent signs. Developed a similar package for Dunedin Railways Engineering Workshop, with emphasis on health and safety regulatory signs.

Middlemarch Museum

Interpretative panels, novel railway history timeline and Save Our Submarine billboard.

Aurora Energy

Interpretative panels for historic zone sub-station in Dunedin, including novel wraparound signs on wooden electric cable reels.

Roslyn Wakari Football Club

Interpretative history panel for what is New Zealand's second oldest football club.

Various logo design and signage projects for schools:

Taieri College – included new branding.

Elm Grove School – included new branding.

Silverstream School – included new branding.

Strath Taieri School – included new branding.

Five Forks School – included new branding.

Grants Braes School – included new branding.

Mornington School – included new branding.

St Hilda's Collegiate School – including historic timeline mural for library wall, an ongoing project.

ADART'S THREE KEYSTONE VALUES

Uncompromised quality – we produce outstanding designs with exceptional technical accuracy and the use of international best practice formulae;

Integrity – we treat all project stakeholders with honesty, respect and fairness, ensuring each project is an enjoyable and profitable one for everyone involved;

Boldness – we challenge the status-quo and are prepared to suggest a better way of doing things, if we confidently believe there is one.

EXCELLENT OUTCOMES

Here is some unsolicited email feedback from clients:

"Another great campaign. Go on, take a bow and enjoy the praise – you deserve it" – Deborah Palmer, (former) Road Safety Advisor, Dunedin City Council Transportation Group.

"AdArt's delivery of in-kind product is of the highest quality and their personal interest and passion for our cause has enriched the relationship to that enjoyed today" – Sue Murray, General Manager, Yellow-eyed Penguin Trust.

"Everyone loves it, we've had amazing feedback. Thanks so much for the wonderful creative work you did on it!" – Sophie Barker, Marketing Manager, Otago Peninsula Trust.

"It's good to use a Dunedin-based business that is genuine and provides a fantastic service and quality job" – Sara Paris, HR Advisor, Downer New Zealand.

MOSGIEL TAIERI COMMUNITY BOARD
HONOURS BOARD

You will recall that I raised this issue at our Board Meeting on 10/11/21. We all know that the Honours Board has not been updated for 11/12 years.
I suggested that I would make enquiries and advise the outcomes.
I contacted a few firms but Moller Young in Rangiora was the most impressive. Moller Young has been operating for over 100 years.
They have had contracts with Christchurch Councils and Boards so they are aware of the Honours Boards in question.

OUR SERVICE GUARANTEE!

Proudly based in Rangiora, we have extensive experience serving the Christchurch and Canterbury area with medals and trophies engraving. These service standards are fundamental to our business principals:

- We respond to your phone or email enquiry promptly
- Our email traffic is monitored 7 days a week
- Quotations are emailed within 48 hours of receiving a specific brief
- Rush order enquiries are welcomed; miracles are regularly performed!
- Badge and medal samples sent on request
- Mutually agreed delivery dates are guaranteed

OUR CUSTOMERS...

Our business relationships with high prestige customers throughout New Zealand have existed for decades. You can always trust Moller-Young to deliver premium quality trophy, award and medal products and amazing standards of customer service.





The firm was established by the Moller family in 1896 (so 125 years old). We are the longest established engravers in Christchurch and supply a national and international market place. Our honours boards are used in Australian schools and throughout New Zealand. We supply honours boards to local government, hospitals, sports clubs, corporates, universities and the Defence Forces.

We also produce service awards nationally for FENZ, the NZ Police, local government and corporates. We make lapel badges for thousands of sports and social clubs throughout the country...medals for NZ Cricket domestic competitions, and other national sporting bodies. We also make masonic jewels for many lodges and suppliers to Masonic lodges.

90% of our revenue is derived from direct to market sales but we also supply badges, medals and plaques to the trade nationally.

Our business focus is on quality and service, so our customer base is formed by clients who have those two key priorities too. We are the only engraver in the South Island to employ a specialist designer.

Below are extracts from emails to and from Brian to the firm.

Mike – Moller Young. With respect, your Board is pretty much a basic board with lists of names in gold text. Our boards are designed to be visually impressive, which tends to enhance the honour of having your name on them.

We also design and produce a more modern style of board from acrylic.

Swannanoa Honours Boards Example

Mike. These particular boards do not have solid brass edging, instead we apply rimu veneer edging the boards. But if you would prefer solid brass edging, that wouldn't be a problem and I've included in the quote for the option.

Not shown in the graphic I sent you, the name plaques on this board are attached to a clear acrylic panel which is attached to the board with discreet brass screws.

Yes, the board dimension shown will accommodate two columns of name plaques, about 20 plaques in each column.

You can have sub headings on your board, One headed Councilors and the other headed Board Members. The only risk with this arrangement is that one column gets filled much sooner than the other. A soon as one column gets filled, the board is pretty much finished. That's why I suggested early on that the most economic and practical set up for honours boards is a separate board for each honours category.

Brian. This is not a problem because the Councilors Board has a lot of space available for years to come.

Preferred Option. The individual boards (with roof section) would be 300mm wide X about 1000mm, including the height of the roof section. This size board would have between 20 and 23 name plaque capacity. The price (subject to final design specs) would be \$950 plus GST. Name plaques would be extra, as already quoted.

I assumed you would want the header Mosgiel Taieri Community Board at the top, and beneath that the honour category the board refers to. So you'll need to let me know what that category is (Life Member - Community Board Member - ??)

You can have sub heading on your board, headed Community Board Members.

Mike. These prices include all design costs and proofing, all header text, guide engraving and decorative trim. The prices also include wall anchors and matching brass screws, plus courier delivery.

Engraved name plaques are currently charged at \$46 plus GST each, this price includes layout art and proofing plus courier delivery. The name plaques are engraved into ABS composite material and supplied with industrial grade double sided tape on the back. If you ordered 10 or more name plaques in one production batch, we can discount the price of each name plaque to \$39 plus GST each.

Yes, solid brass would look better. In as much as the new board is a natural light timber colour and the name plaques would be gold with black text, I guess the new board would blend in somewhat. But, it is a totally different style of board so there will clearly be a visual difference.

Brian. This would not present any issue because the board will be separate from the original board.

The estimate of the number of names is 20.

Recommendation

- There are other possible options, such as two boards, larger sizes etc but the Option of one board appears to be suitable for the Board's need.
- Bearing in mind the board for Councilors still has plenty of space for years to come I consider we only require one board for Community Board Members.
- The quote of \$1989.50, which includes the cost of inserting the names and delivery costs etc, is attached for your info.
- We have heard figures of \$10,000 banded around the Board in the past.
- This quote is much more realistic.
- I know that DCC has agreed to pay for costs in relation to Celebrating Excellence project, so it would seem appropriate that DCC is requested to pay for this cost. If this is not possible, then the Project Fund will obviously be utilised.
- If the Board has any pride in the Community, then I suggest that the quote is accepted.
- I also suggest that the boards be repositioned to the Downes Room for obvious reasons.
- I appreciate this an early request but would you place this item on the Agenda for consideration and discussion for our next Board Meeting on 9/2/22?

Brian Peat
Mosgiel Taieri Community Board Member



QUOTE

Cash Sale

Date
 30 Nov 2021

Expiry
 30 Jan 2022

Quote Number
 QU-0020

Reference
 B Peat

GST Number
 099-545-208

Moller-Young NZ Ltd
 383 No 10 Road, RD6,
 RANGIORA 7476
 PO Box 818, RANGIORA
 7740
 Phone: 64 3 312 0310
 Email:
 sales@mollyoung.co.nz

Mosgiel Taieri Community Board Honours Board - Small, single column board

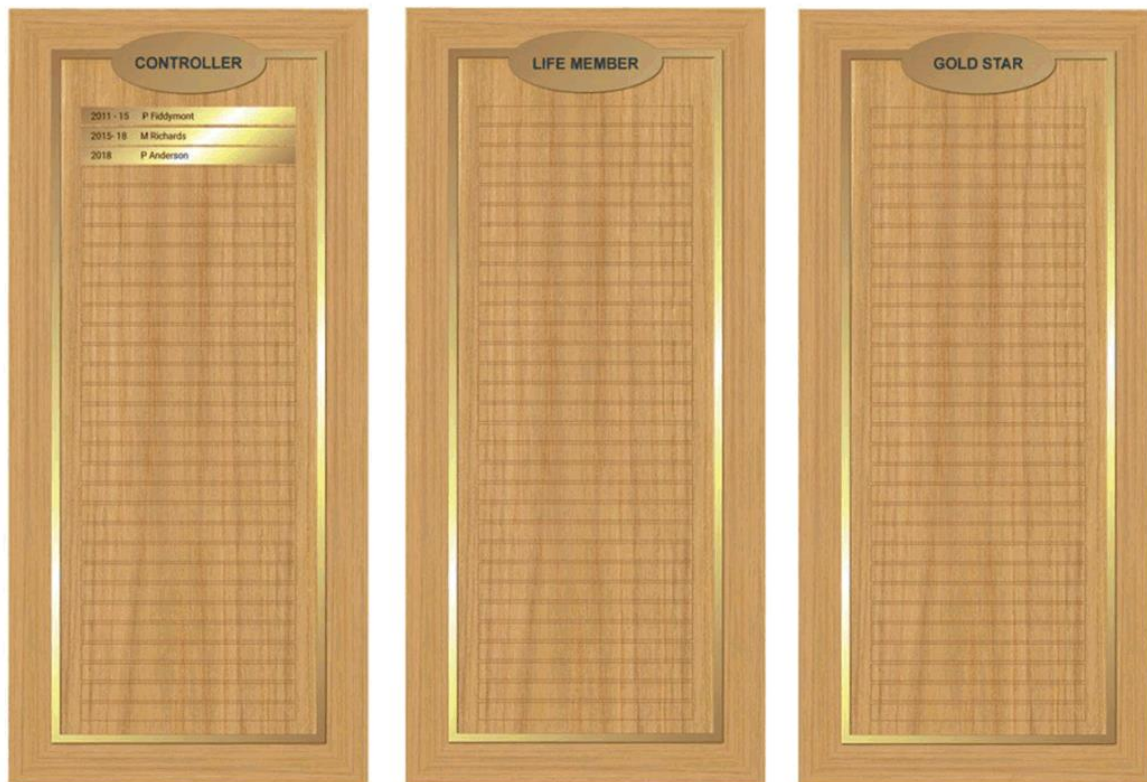
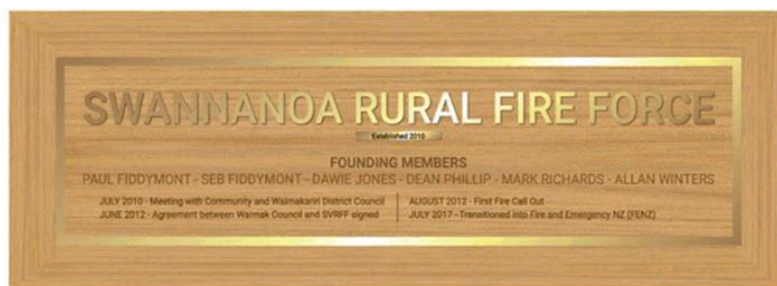
Brian Peat
 22 Charlton Avenue
 Mosgiel 9024
 +61 493 082 115
 peat23@hotmail.com

Description	Quantity	Unit Price	Amount NZD
Wooden Honours Board - Rimu veneer board with solid brass edging - Single column - approx 20 - 23 name spaces	1.00	950.00	950.00
1 x Community Board Members			
Price is an estimation only - subject to final design			
Individual name plates	20.00	39.00	780.00
Price is discounted due to quantity ordered			
Courier address to be advised	1.00	0.00	0.00
		Subtotal	1,730.00
		TOTAL GST 15%	259.50
		TOTAL NZD	1,989.50



383 NO 10 ROAD, RD 6, RANGIORA, P O BOX 818, RANGIORA, 7440
PH: 03 312 0310 FAX: 03 372 9371

SALES@MOLLERYOUNG.CO.NZ · WWW.MOLLERYOUNG.CO.NZ



910mm x 330mm rimu header board with gold trim and laser engraving
420mm x 910mm rimu boards with gold trim and laser engraving

We accept no responsibility or financial liability for any production errors that are discovered after you have approved this design in writing, as correct in all respects and approved for production.

All artwork supplied under copyright and remains the property of Moller-Young New Zealand Ltd, and may only be used by Moller-Young New Zealand Ltd for the manufacture of the intended product/s. It may not be used for any unauthorised copying or use without permission
copyright © 2019



McCORMACK
ELLIS
LAING
LUMSDEN
MIDDLETON
MORRIS
ROBINSON
MORSHUIS
MELLIE
JORNAL
STEWART
WALKER
BROWN
WITHER
D
K
G

ATION

MBER OF
HORITIES
ED FROM
T OF THAT
L WAS ONE
CILS AND
ALGAMATED
RENT
UNCIL.

COUNCILLORS
(SINCE 1989)

1989-1995 G.M. BROWN
1989-1998 L.J. LOWTHER
1989-1992 D.H. WITHER
1992-2007 M.D. PRENDERGAST
1995-1998 J.H. DOWNES
1998- S.B. BROWN
2007- K.M.H. WILSON

**COMMUNITY
BOARD MEMBERS**
(SINCE 1989)

1989-1998 P.J. DANIELL
1989-1992 J.H. DOWNES
1989-1992 I. J. FENTON
1989-1992 J.F. FOX
1989-1992 E.C. HYSLOP
1989-1992 D.J. STEWART
1992-1998 L.E. LAING
1992-1995 R.J.L. COCHRANE
1998-2004 R.J.L. COCHRANE
1992-2007 L.R. HARVEY
1993-2001 L.L. HUNTER
1993-1995 P.M. MCCARTHY
1995-2001 B.R. DOWNES
1995-1998 B.J. MILLER
2001-2004 B.J. MILLER
1998-2001 M.M. CHRISTIE
1998- M.L. DILLON
2001-2007 B.J. CASHMERE
2001-2004 M.D. PRENDERGAST
2004-2010 C.R. ADAMS
2004- B.J. BARBOUR
2004-2009 J.G. KELLY
2007- W.H. FEATHER
2007- S.K. WILSON
2009-2010 P.A. MASON
2010- T.D. CHRISTIE
2010- B.J. MILLER

BOARD UPDATES

Department: Civic

EXECUTIVE SUMMARY

Board members to provide verbal updates on activities including:

- 1 **Keep Dunedin Beautiful (KDB)** - Phillipa Bain
- 2 **Friends of the Mosgiel Memorial Gardens** - Brian Miller
- 3 **Hawk n Hurl** – Dean McAlwee
- 4 **Mosgiel Coronation Hall** - Dean McAlwee
- 5 **Mosgiel Aquatic Project Team** - Brian Miller
- 6 **Mosgiel and Taieri Emergency Group.** - Joy Davis
- 7 **Outram Emergency Group** - Dean McAlwee
- 8 **Silverstream Plantings** - Brian Peat
- 9 **Waiholo to Mosgiel Cycle/Walkway Project** – Brian Peat
- 9- **Social Media** - Brian Peat
- 10 **Community Engagement**

RECOMMENDATIONS

That the Board:

- a) **Notes** the Board Updates

Signatories

Authoriser:	Clare Sullivan - Manager Governance
-------------	-------------------------------------

Attachments

There are no attachments for this report.

CHAIRPERSON'S REPORT

Department: Civic

EXECUTIVE SUMMARY

- 1 A report from the Chairperson is attached which updates the Board on matters of interest since the previous meeting. As this is an administrative report only, the Summary of Considerations is not required.

RECOMMENDATIONS

That the Board:

- a) **Notes** the Chairperson's update

Signatories

Authoriser:	Clare Sullivan - Manager Governance
-------------	-------------------------------------

Attachments

	Title	Page
A	Chairperson's Report	79

Mosgiel Taieri Community Board**Chair's Report 10 November, 2022**

After a relatively carefree summer, Covid (Omicron variant), provides the next challenge for our communities.

May I encourage everyone to get fully vaccinated, it is the best tool we have to get back to those carefree days we enjoyed so recently.

DCC staff are again, adapting and responding to ensure our city services continue. We all face the challenges of living and working in this ongoing environment of uncertainty, patience, kindness and tolerance have never been more needed.

Since our November meeting, it has been fantastic to see the progress on the Mosgiel Pool/s, and the installation of the half size basketball court at Seddon Park, which I know is already well used.

As Community Development is a current priority in our Community Plan, specifically supporting neighbourhood connectedness, wellbeing, and resilience. Therefore, it is great to see the Taieri now has an established Place Based Group, The Taieri Network. A community development group funded by the Dunedin City Council, a Place Group takes a broad approach, operates in a collaborative manner across all sectors, supports the DCC Strategic Framework and aims to build the capability of all people in its area.

Thanks to staff who continue to respond to Board members inquiries on behalf of residents. Remember Customer Services should be the first port of call for any concerns or compliments! Call 477 4000 or use the *Fix It* form on the DCC website.

Board members contact details can be found at the Mosgiel Library, on the DCC Website, or call 477. 4000 and ask the Customer Services team for them.

Joy Davis
Chair

COUNCIL ACTIVITIES

Department: Civic

EXECUTIVE SUMMARY

- 1 Councillor Carmen Houlahan will provide an update on items of interest.

RECOMMENDATIONS

That the Board:

- a) **Notes** the Council Activities Update.

Signatories

Authoriser:	Clare Sullivan - Manager Governance
-------------	-------------------------------------

Attachments

There are no attachments for this report.

ITEMS FOR CONSIDERATION BY THE CHAIR

Items for consideration by the Chair.