

Notice of Meeting:

I hereby give notice that an extraordinary meeting of the Otago Peninsula Community Board will be held on:

Date: Friday 17 June 2022
Time: 10:00 am
Venue: via Audio Visual Link

Sandy Graham
Chief Executive Officer

Otago Peninsula Community Board
PUBLIC AGENDA

MEMBERSHIP

Chairperson	Paul Pope	
Deputy Chairperson	Hoani Langsbury	
Members	Lox Kellas	Graham McArthur
	Cheryl Neill	Edna Stevenson
	Cr Andrew Whiley	
Senior Officer	Chris Henderson, Group Manager Waste and Environmental Solutions	
Governance Support Officer	Lauren McDonald	

Lauren McDonald
Governance Support Officer

Telephone: 03 477 4000
Lauren.McDonald@dcc.govt.nz
www.dunedin.govt.nz

Note: Reports and recommendations contained in this agenda are not to be considered as Council policy until adopted.

The meeting will be livestreamed via <https://youtu.be/sgJxuM-D6MY>

ITEM	TABLE OF CONTENTS	PAGE
1	Apologies	4
2	Confirmation of Agenda	4
3	Declaration of Interest	5
PART A REPORTS (Extraordinary Otago Peninsula Community Board has power to decide these matters)		
4	Funding Application - Hereweka Harbour Cone Trust	11

1 APOLOGIES

At the close of the agenda no apologies had been received.

2 CONFIRMATION OF AGENDA

Note: Any additions must be approved by resolution with an explanation as to why they cannot be delayed until a future meeting.

DECLARATION OF INTEREST

EXECUTIVE SUMMARY

1. Members are reminded of the need to stand aside from decision-making when a conflict arises between their role as an elected representative and any private or other external interest they might have.
2. Elected members are reminded to update their register of interests as soon as practicable, including amending the register at this meeting if necessary.
3. Register of interests include board appointments to projects or local groups and where a member may be appointed as a liaison member representing the Board.
4. A table of the agreed Otago Peninsula Community Board member responsibilities for the 2019-2022 Triennium which was agreed to at the 21 November 2019 meeting.
5. Due to a conflict of interest Paul Pope has withdrawn from the meeting and Hoani Langsbury will chair the meeting.

RECOMMENDATIONS

That the Board:

- a) **Notes** the conflict of interest by Paul Pope for the Hereweka Harbour Cone Trust application.

Attachments

Title	Page
 OPCB Register of Interests - June 2022	7

Otago Peninsula Community Board Register of Interest as at 3 February 2022					
Name	Date of Entry	Responsibility (ie: Chairperson etc)	Declaration of Interests	Nature of Potential Interest	Proposed Management Plan
Paul Pope (Chairperson)		Board Chairperson/Director	Spiralis Ltd	No conflict identified.	Withdraw from discussion and leave the table if a conflict of interest is identified. Seek advice on actual or potential conflicts of interest prior to the meeting.
		Trustee	Hereweka Harbour Cone Trust	No conflict identified.	Withdraw from discussion and leave the table if a conflict of interest is identified. Seek advice on actual or potential conflicts of interest prior to the meeting.
		President	Dunedin Amenities Society	No conflict identified.	Withdraw from discussion and leave the table if a conflict of interest is identified. Seek advice on actual or potential conflicts of interest prior to the meeting.
		Owner	Residential Property, Portobello	No conflict identified.	Withdraw from discussion and leave the table if a conflict of interest is identified. Seek advice on actual or potential conflicts of interest prior to the meeting.
		Consultant	Upfront Environmental	No conflict identified.	Withdraw from discussion and leave the table if a conflict of interest is identified. Seek advice on actual or potential conflicts of interest prior to the meeting.
	11/11/2021	Board liasion	Portobello Hall	Possible conflict if group applies for funding.	Withdraw from discussion and leave the table if a conflict of interest is identified. Seek advice on actual or potential conflicts of interest prior to the meeting.
Hoani Langsbury (Deputy Chairperson)		Manager	Otago Peninsula Trust	No conflict identified.	Withdraw from discussion and leave the table if a conflict of interest is identified. Seek advice on actual or potential conflicts of interest prior to the meeting.
		Deputy Chairperson	Dark Skies Advisory Group	No conflict identified.	Withdraw from discussion and leave the table if a conflict of interest is identified. Seek advice on actual or potential conflicts of interest prior to the meeting.
		Trustee	Yellow-eyed Penguin Trust	No conflict identified.	Withdraw from discussion and leave the table if a conflict of interest is identified. Seek advice on actual or potential conflicts of interest prior to the meeting.
		Trustee	Otago Peninsula Biodiversity Group	No conflict identified.	Withdraw from discussion and leave the table if a conflict of interest is identified. Seek advice on actual or potential conflicts of interest prior to the meeting.
		External Issues Komiti	Te Runanga o Otakou	No conflict identified.	Withdraw from discussion and leave the table if a conflict of interest is identified. Seek advice on actual or potential conflicts of interest prior to the meeting.
		TBA	Te Runanga o Otakou-Tangata Tiaki	No conflict identified.	Withdraw from discussion and leave the table if a conflict of interest is identified. Seek advice on actual or potential conflicts of interest prior to the meeting.
		Otakou Alternate	Te Runanga o Ngai Tahu	No conflict identified.	Withdraw from discussion and leave the table if a conflict of interest is identified. Seek advice on actual or potential conflicts of interest prior to the meeting.
		Member	DoC Te Roopu Kaitiaki	No conflict identified.	Withdraw from discussion and leave the table if a conflict of interest is identified. Seek advice on actual or potential conflicts of interest prior to the meeting.
		Committee Member	Ariki Athletics Club	No conflict identified.	Withdraw from discussion and leave the table if a conflict of interest is identified. Seek advice on actual or potential conflicts of interest prior to the meeting.
		Member	Port Otago Technical Committee	No conflict identified.	Withdraw from discussion and leave the table if a conflict of interest is identified. Seek advice on actual or potential conflicts of interest prior to the meeting.
		RMA Commissioner	Environment Canterbury	No conflict identified.	Withdraw from discussion and leave the table if a conflict of interest is identified. Seek advice on actual or potential conflicts of interest prior to the meeting.
		Trustee	Predator Free Dunedin	No conflict identified.	Withdraw from discussion and leave the table if a conflict of interest is identified. Seek advice on actual or potential conflicts of interest prior to the meeting.
		Chairperson	Peninsula Biodiversity Trust	No conflict identified.	Withdraw from discussion and leave the table if a conflict of interest is identified. Seek advice on actual or potential conflicts of interest prior to the meeting.
		Trustee	Wild Dunedin	No conflict identified.	Withdraw from discussion and leave the table if a conflict of interest is identified. Seek advice on actual or potential conflicts of interest prior to the meeting.
	24/09/2020				
	12/11/2020	Member	Department of Conservation - General Policy Operations Development Group	No conflict identified.	Withdraw from discussion and leave the table if a conflict of interest is identified. Seek advice on actual or potential conflicts of interest prior to the meeting.

	11/11/2021	Member	Wellers Rock and Wellers Jetty Project	No conflict identified.	Withdraw from discussion and leave the table if a conflict of interest is identified. Seek advice on actual or potential conflicts of interest prior to the meeting.
Lox Kellas (Member)	16/09/2021	Member	Dunedin RSA	No conflict identified.	Withdraw from discussion and leave the table if a conflict of interest is identified. Seek advice on actual or potential conflicts of interest prior to the meeting.
	24/09/2020	District Vice President	Otago Southland Returned Services Association	No conflict identified.	Withdraw from discussion and leave the table if a conflict of interest is identified. Seek advice on actual or potential conflicts of interest prior to the meeting.
	28/11/2019	Trustee	Dunedin RSA Welfare Trust	No conflict identified.	Withdraw from discussion and leave the table if a conflict of interest is identified. Seek advice on actual or potential conflicts of interest prior to the meeting.
	23/01/2020	Trustee	Southern Heritage Trust	No conflict identified.	Withdraw from discussion and leave the table if a conflict of interest is identified. Seek advice on actual or potential conflicts of interest prior to the meeting.
	24/09/2020	Member	Coastguard Dunedin	Possible conflict if group applies for funding.	Withdraw from discussion and leave the table if a conflict of interest is identified. Seek advice on actual or potential conflicts of interest prior to the meeting.
Graham McArthur (Member)		Managing Director (co-owner)	The Video Factory Ltd (video production company)	No conflict identified.	Withdraw from discussion and leave the table if a conflict of interest is identified. Seek advice on actual or potential conflicts of interest prior to the meeting.
		Director	Speargrass Films Ltd (production company)	No conflict identified.	Withdraw from discussion and leave the table if a conflict of interest is identified. Seek advice on actual or potential conflicts of interest prior to the meeting.
		Director	Multi Stream Media Ltd (shelf company)	No conflict identified.	Withdraw from discussion and leave the table if a conflict of interest is identified. Seek advice on actual or potential conflicts of interest prior to the meeting.
		Owner	Rental property, Dunedin	No conflict identified.	Withdraw from discussion and leave the table if a conflict of interest is identified. Seek advice on actual or potential conflicts of interest prior to the meeting.
		Member	Desalination and Offsetting Water right at Tairoa Head	No conflict identified.	Withdraw from discussion and leave the table if a conflict of interest is identified. Seek advice on actual or potential conflicts of interest prior to the meeting.
		Owner	Residential Property, Portobello	No conflict identified.	Withdraw from discussion and leave the table if a conflict of interest is identified. Seek advice on actual or potential conflicts of interest prior to the meeting.
		Member	Portobello Boat Club	Possible conflict if group applies for funding.	Withdraw from discussion and leave the table if a conflict of interest is identified. Seek advice on actual or potential conflicts of interest prior to the meeting.
		Member	Caselberg Trust	Possible conflict if group applies for funding.	Withdraw from discussion and leave the table if a conflict of interest is identified. Seek advice on actual or potential conflicts of interest prior to the meeting.
	12/11/2020	Trustee	Short Film Otago	No conflict identified.	Withdraw from discussion and leave the table if a conflict of interest is identified. Seek advice on actual or potential conflicts of interest prior to the meeting.
		Member	Hereweka-Harbour Cone Trust	No conflict identified.	Withdraw from discussion and leave the table if a conflict of interest is identified. Seek advice on actual or potential conflicts of interest prior to the meeting.
	11/11/2021	Board representative	Keep Dunedin Beautiful Committee	No conflict identified.	Withdraw from discussion and leave the table if a conflict of interest is identified. Seek advice on actual or potential conflicts of interest prior to the meeting.
Cheryl Neill		Teacher	Portobello School	No conflict identified.	Withdraw from discussion and leave the table if a conflict of interest is identified. Seek advice on actual or potential conflicts of interest prior to the meeting.
		Shop worker	Portobello Dairy	No conflict identified.	Withdraw from discussion and leave the table if a conflict of interest is identified. Seek advice on actual or potential conflicts of interest prior to the meeting.
	11/11/2021	Board liasion	Harwood Hall Committee	Possible conflict if group applies for funding.	Withdraw from discussion and leave the table if a conflict of interest is identified. Seek advice on actual or potential conflicts of interest prior to the meeting.
		Member	Portobello Bowling Club	Possible conflict if group applies for funding.	Withdraw from discussion and leave the table if a conflict of interest is identified. Seek advice on actual or potential conflicts of interest prior to the meeting.
Edna Stevenson (Member)	24/09/2020	President	Portobello Library	Possible conflict if group applies for funding.	Withdraw from discussion and leave the table if a conflict of interest is identified. Seek advice on actual or potential conflicts of interest prior to the meeting.
	24/09/2020	Member	Portobello Bowling Club	Possible conflict if group applies for funding.	Withdraw from discussion and leave the table if a conflict of interest is identified. Seek advice on actual or potential conflicts of interest prior to the meeting.

Andrew Whiley (Council Representative)	17/11/2016	Owner/Operator	Whiley Golf Inc and New Zealand Golf Travel Ltd	No conflict identified.	Withdraw from discussion and leave the table. If the meeting is in confidential leave the room. Seek advice prior to the meeting.
		Director/Shareholder 22 May 2017	Estate of Grace Limited	No conflict identified.	Withdraw from discussion and leave the table. If the meeting is in confidential leave the room. Seek advice prior to the meeting.
		Trustee	Japek (Family Trust) - Property Ownership - Dunedin	Duties to Trust may conflict with duties of Council Office.	Withdraw from discussion and leave the table. If the meeting is in confidential, leave the room. Seek advice prior to the meeting.
		Member	Otago Golf Club	No conflict identified.	Withdraw from discussion and leave the table. If the meeting is in confidential leave the room. Seek advice prior to the meeting.
		Member	Dunedin South Rotary Club	No conflict identified.	Seek advice prior to the meeting if actual or perceived conflict of interest arises.
		Board Member	New Zealand Professional Golfers Assn	No conflict identified.	Seek advice prior to the meeting if actual or perceived conflict of interest arises.
		Member	Institute of Directors	No conflict identified.	Seek advice prior to the meeting if actual or perceived conflict of interest arises.
		Member	National Party	No conflict identified.	Seek advice prior to the meeting if actual or perceived conflict of interest arises.
		Chairman	Volunteering Otago	No conflict identified.	Seek advice prior to the meeting if actual or perceived conflict of interest arises.
		Member	Otago Peninsula Communtiy Board (Council appointment)	No conflict identified.	Seek advice prior to the meeting if actual or perceived conflict of interest arises.
		Member	Grow Dunedin Partnership (Council appointment - allternate)	No conflict identified.	Seek advice prior to the meeting if actual or perceived conflict of interest arises.
		Member	Dunedin Otaru Sister City Society (Council Appointment)	No conflict identified.	Seek advice prior to the meeting if actual or perceived conflict of interest arises.
		Member	Dunedin Public Art Gallery Society (Council Appointment)	No conflict identified.	Seek advice prior to the meeting if actual or perceived conflict of interest arises.
		Member	Chisholm Links Golf Club	No conflict identified	Seek advice prior to the meeting if actual or perceived conflict of interest arises.
		Member	Otago Property Investors Association	No conflict identified	Seek advice prior to the meeting if actual or perceived conflict of interest arises.
	11/11/2021	Member	Puketai Residential Centre Liaison Committee (Council Appointment)	No conflict identified.	Seek advice prior to the meeting if actual or perceived conflict of interest arises.
		Chairperson	Dunedin Community House Executive Committee	Potential grants recipient	Withdraw from discussion and leave the table. If the meeting is in confidential, leave the room. Seek advice prior to the meeting.
		Chairman	Volunteer South	No conflict identified	Seek advice prior to the meeting if actual or perceived conflict of interest arises.

PART A REPORTS

FUNDING APPLICATION - HEREWEKA HARBOUR CONE TRUST

Department: Civic

EXECUTIVE SUMMARY

- 1 This report provides a copy of the funding application received for the Board's consideration. As this is an administrative report only, the Summary of Considerations is not required.
- 2 A funding application has been received for the Board's consideration from the Hereweka Harbour Cone Trust for \$3,000 to assist with signage and materials for the creation of a public walking track linking the Hereweka Street walk from Portobello through to the top of Hereweka/Harbour Cone.
- 3 The intended track will traverse the DCC owned Hereweka block and three adjoining private properties. All three property owners are fully supportive of the project.
- 4 A copy of the proposed track route and estimated costings are attached.
- 5 The balance of project funds available to the Board as at 10 June is \$3,679.85

RECOMMENDATIONS

That the Board:

- a) **Approves/declines** the funding application from the Hereweka Harbour Cone Trust for \$3,000 for track signage and materials to assist with the creation of a public walking track linking the Hereweka Street walk to the top of Harbour Cone.

Signatories

Author:	Lauren McDonald - Governance Support Officer
Authoriser:	Clare Sullivan - Manager Governance

Attachments

	Title	Page
A	Funding application	12
B	Proposed track	13
C	Track costing estimates	15

**Application for Funding from the
Otago Peninsula Community Board**

Name of group applying for funds : **Hereweka Harbour Cone Trust**

Contact person: **Marcia Dale**

Address: [REDACTED]

Phone Number: [REDACTED]

Email: [REDACTED]

Position held: **Trustee**

Has your group made an application to the Board for funding support within the last five years?
No

How much assistance has your group received previously from the Otago Peninsula Community Board? \$ n/a

Short description of present project:

We wish to create a public walking track linking the Hereweka Street walk from Portobello through to the top of Hereweka/Harbour Cone. The track will traverse the DCC owned Hereweka block and 3 adjoining private properties. All property owners are fully supportive of the project. Please see attached track route.

Please attach any additional information which may be useful in explaining the project.

Total cost of project: \$ 6000

Amount already raised: \$ 3000

Amount sought from Otago Peninsula Community Board: \$ 3000

Amount sought from any other Dunedin City Council source: \$ 0

How will the rest of the project cost be covered? n/a

Item	Cost
Stainless Steel Signs x 10	\$200 each = \$2000
Materials for styles	\$3000
Materials for step risers	\$1000
Total cost	\$6000

What is the timeframe for completing the project? [OR the date of your event/project?]

We wish for the track to be open in time for the 2022/23 summer.

Is your project a one-off, annual or biennial event?

It will be in place in perpetuity.

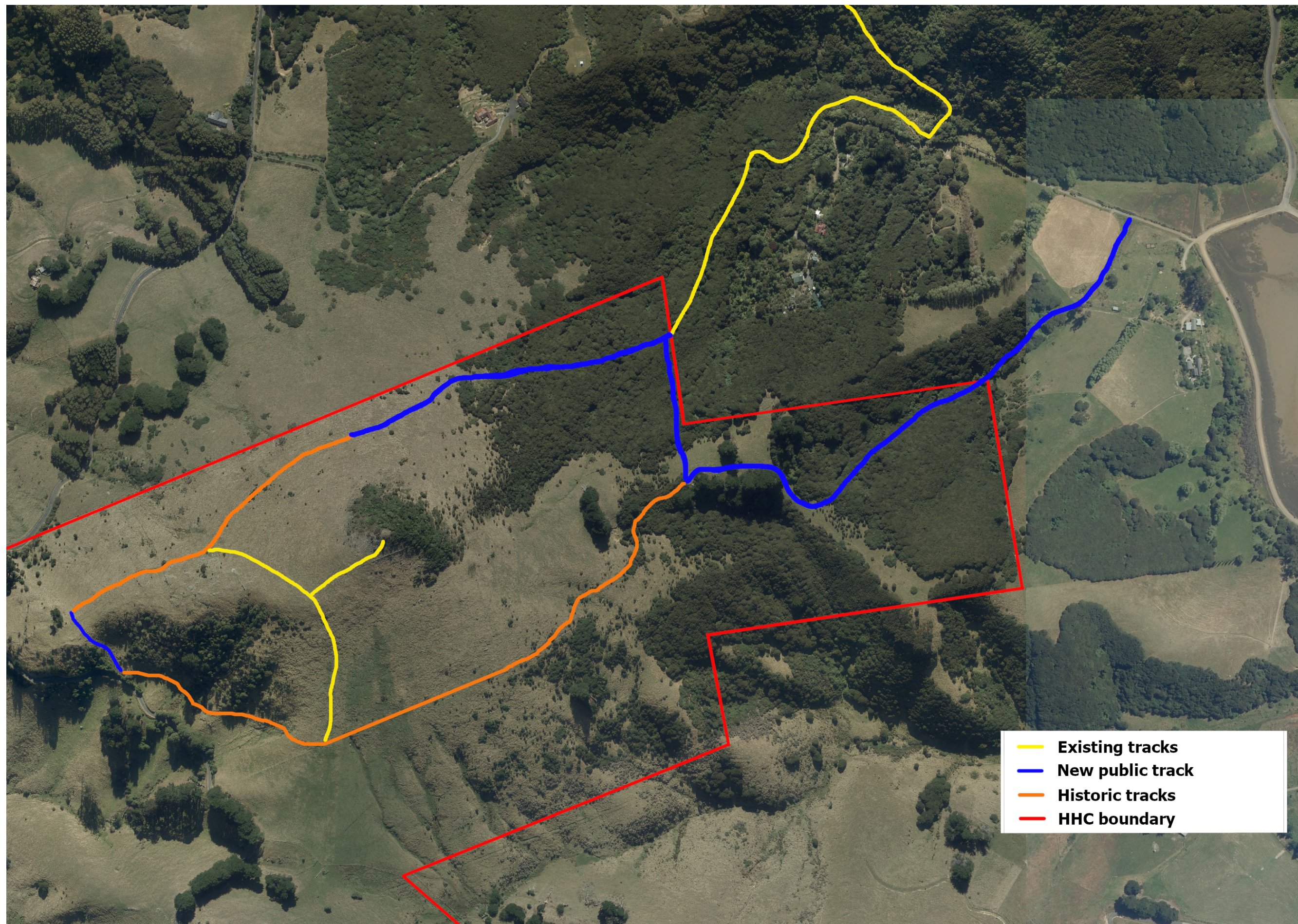
How will the project benefit your organisation/club? What are the benefits to the wider community of your project?

This track will benefit the residents of Portobello, the residents of wider Dunedin and visiting tourists. It will provide access to previously obscure historical sites and informative signage will aim to promote usage of further sites of interest throughout the community asset that is the Hereweka Block.

NOTES: Applicants should refer to the 'Discretionary Funding Guidelines' contained in the Board's Community Plan for guidance on the Board's priorities. Although applications will be considered on their merits, regard will also be had to ensuring a fair allocation over all the Board area. This application form and guidelines are also available on the Dunedin City Council website (www.dunedin.govt.nz).

Contact: Paul Pope (Board Chairperson) telephone 027 466 8446 or Lauren McDonald (Governance Support Officer) 474 3428 with any questions.

Deadline for Applications: Applications must be lodged no less than two weeks prior to each Board meeting.



Portobello to Hereweka Track Project Costings**Signage**

Quoted price for A2 size printed aluminium sign board with stainless fittings
\$200/sign (Speedy Signs)

Number required 8-10

Total Price **\$1600-\$2000**

Installation materials for free standing signs (Quoted by Mitre 10)

Build a frame and set on 2 800 mm high posts to secure sign into the track or ground surface requires 2.5 metres of H3 post and rail 75x100 timber @\$18/metre

Price per installation \$45/sign + \$10 hardware (coach bolts & nails) = \$55/sign

Total Price of Sign Frames (Using 8-10 signs) **\$ 440-500**

Installation of Track Steps as Required

Using 250mm X 50mm H3 risers @ \$18.87/metres

Steel waratah pegs 500mm length & \$5.00/peg

Each step will use approximately 1.2metre of timber and 2 pegs/step = \$32.64/step

Total Price to install 25 steps **\$ 816.00**

Marker Posts

Install 30 x 1.8 metre high track marker poles using 75x100 timber @\$18/metre and allowing 300mm in the ground = \$37.8/marker pole

Total Price to Install 30 Marker Poles **\$ 1,134.00**

Installation of Stiles Built to Peninsula Track Standards

Using H4 100mm x 100mm posts @ \$23.00/metre and H4 250mm x 50mm tread @ \$18.87/meter with a 50mm x 50mm hand rail @ \$5.00/metre.

Stile price installed is \$100 per tread (each stile may require 2 steps) + Hardware \$25 = \$225/stile

Total Price to Install 5 Stiles **\$ 1025.00**

Incidentals

Additional Hardware (Coach Bolts Nails) \$450.00

10 bags of Qwikcrete as required for setting posts \$13.60/Bag \$130.60

Total Price for Incidentals **\$ 580.60**

Final Project Cost*(Final cost has used the higher cost quotation)

<u>Item</u>	<u>Cost*</u>
Signs	<u>\$2000.00</u>
Signs Materials and Installation	<u>\$ 500.00</u>
Track Steps	<u>\$ 816.00</u>
Marker Posts	<u>\$1134.00</u>
Stiles	<u>\$1025.00</u>
Incidentals	<u>\$ 580.60</u>
Subtotal	<u>\$6055.60</u>
GST 15% (Covered by the Trust)	<u>\$ 908.34</u>
Total Project Value	<u>\$6963.94</u>