

Notice of Meeting:

I hereby give notice that an ordinary meeting of the Community Services Committee will be held on:

Date: Monday 6 March 2023
Time: 10:00am
Venue: Council Chambers, Level 2, Dunedin Public Art Gallery, The Octagon, Dunedin

Sandy Graham
Chief Executive Officer

Community Services Committee

PUBLIC AGENDA

MEMBERSHIP

Chairperson Cr Marie Laufiso
Deputy Chairperson Cr Mandy Mayhem

Members	Cr Bill Acklin	Cr Sophie Barker
	Cr David Benson-Pope	Cr Christine Garey
	Cr Kevin Gilbert	Cr Carmen Houlahan
	Cr Cherry Lucas	Cr Jim O'Malley
	Cr Lee Vandervis	Cr Steve Walker
	Cr Brent Weatherall	Cr Andrew Whiley

Senior Officer Simon Pickford, General Manager Community Services

Governance Support Officer Lauren Riddle

Lauren Riddle
Governance Support Officer

Telephone: 03 477 4000
Governance.support@dcc.govt.nz
www.dunedin.govt.nz

Note: Reports and recommendations contained in this agenda are not to be considered as Council policy until adopted.

ITEM	TABLE OF CONTENTS	PAGE
1	Opening Karakia Timatanga	4
2	Public Forum	4
3	Apologies	4
4	Declaration of Interest	5
PART A REPORTS (Committee has power to decide these matters)		
5	Community Services Committee Forward Work Programme - March 2023	14
6	Ōtepoti Dunedin Housing Plan Update	17
7	Closing Karakia Whakamutunga	
	The meeting will close with a Karakia Whakamutunga.	

1 OPENING

The meeting will be opened with a karakia timatanga.

2 PUBLIC FORUM

At the close of the agenda no requests for public forum had been received.

3 APOLOGIES

An apology has been received from Cr Andrew Whiley.

That the Committee:

Accepts the apology from Cr Andrew Whiley.

DECLARATION OF INTEREST

EXECUTIVE SUMMARY

1. Members are reminded of the need to stand aside from decision-making when a conflict arises between their role as an elected representative and any private or other external interest they might have.
2. Elected members are reminded to update their register of interests as soon as practicable, including amending the register at this meeting if necessary.

RECOMMENDATIONS

That the Committee:

- a) **Notes/Amends** if necessary the Elected Members' Interest Register attached as Attachment A; and
- b) **Confirms/Amends** the proposed management plan for Elected Members' Interests.

Attachments

Title		Page
 A	Councillor Register of Interest	6

Community Services Committee				
Councillor Register of Interest - Current as at 1 March 2023				
Councillors are members of all committees				
Name	Responsibility (i.e. Chairperson etc)	Declaration of Interests	Nature of Potential Interest	Member's Proposed Management Plan
Mayor Jules Radich	Shareholder	Izon Science Limited	No conflict identified	Seek advice prior to the meeting if actual or perceived conflict of interest arises.
	Shareholder	Taurikura Drive Investments Ltd	No conflict identified	Seek advice prior to the meeting if actual or perceived conflict of interest arises.
	Shareholder	Golden Block Developments Ltd	No conflict identified	Seek advice prior to the meeting if actual or perceived conflict of interest arises.
	Director	Cambridge Terrace Properties Ltd	No conflict identified	Seek advice prior to the meeting if actual or perceived conflict of interest arises.
	Director/Shareholder	Southern Properties (2007) Ltd	No conflict identified	Seek advice prior to the meeting if actual or perceived conflict of interest arises.
	Director	Arrenway Drive Investments Limited	No conflict identified	Seek advice prior to the meeting if actual or perceived conflict of interest arises.
	Director	Golden Centre Holdings Ltd	No conflict identified	Seek advice prior to the meeting if actual or perceived conflict of interest arises.
	Director/Shareholder	IBMS Ltd	No conflict identified	Seek advice prior to the meeting if actual or perceived conflict of interest arises.
	Director/Shareholder	Raft Holdings Ltd	No conflict identified	Seek advice prior to the meeting if actual or perceived conflict of interest arises.
	Director/Shareholder	Otago Business Coaching Ltd	No conflict identified	Seek advice prior to the meeting if actual or perceived conflict of interest arises.
	Director	Effectivise Ltd	No conflict identified	Seek advice prior to the meeting if actual or perceived conflict of interest arises.
	Director	Athol Street Investments Ltd	No conflict identified	Seek advice prior to the meeting if actual or perceived conflict of interest arises.
	Director/Shareholder	Allandale Trustee Ltd	No conflict identified	Seek advice prior to the meeting if actual or perceived conflict of interest arises.
	Shareholder	Aberdeen St No2 Ltd	No conflict identified	Seek advice prior to the meeting if actual or perceived conflict of interest arises.
	Member	Road Safety Action Plan	No conflict identified	Seek advice prior to the meeting if actual or perceived conflict of interest arises.
	100% Shareholder/Director	Panorama Developments Limited	No conflict identified	Seek advice prior to the meeting if actual or perceived conflict of interest arises.
	Member	Dunedin Hospital Local Advisory Group (Council Appointment)	No conflict identified	Seek advice prior to the meeting if actual or perceived conflict of interest arises.
	Member	Dunedin Council of Social Services (Council Appointment)	No conflict identified	Seek advice prior to the meeting if actual or perceived conflict of interest arises.
	Member	Tertiary Precinct Planning Group (Council Appointment)	No conflict identified	Seek advice prior to the meeting if actual or perceived conflict of interest arises.
	Member	Tertiary Sector Steering Group (Council Appointment)	No conflict identified	Seek advice prior to the meeting if actual or perceived conflict of interest arises.
	Member	Local Government New Zealand (Zone 6 Committee) (Council Appointment)	No conflict identified	Seek advice prior to the meeting if actual or perceived conflict of interest arises.
	Member	Connecting Dunedin (Council Appointment)	No conflict identified	Seek advice prior to the meeting if actual or perceived conflict of interest arises.

Name	Responsibility (i.e. Chairperson etc)	Declaration of Interests	Nature of Potential Interest	Member's Proposed Management Plan
Cr Bill Acklin	Shareholder/Director	Dunedin Brokers Limited	No conflict identified	Seek advice prior to the meeting if actual or perceived conflict of interest arises.
	Member	APRA - AMCOS	No conflict identified	Seek advice prior to the meeting if actual or perceived conflict of interest arises.
	Entertainer	Various functions	No conflict identified	Seek advice prior to the meeting if actual or perceived conflict of interest arises.
	Member	Strath Taieri Community Board (Council Appointment)	No conflict identified	Seek advice prior to the meeting if actual or perceived conflict of interest arises.
	Member	Craigieburn Reserve Committee (Council Appointment)	No conflict identified	Seek advice prior to the meeting if actual or perceived conflict of interest arises.
	Member	Toitū Otago Settlers Museum Board (Council Appointment)	No conflict identified	Seek advice prior to the meeting if actual or perceived conflict of interest arises.
Cr Sophie Barker	Director	Ayrmed Limited	No conflict identified	Seek advice prior to the meeting if actual or perceived conflict of interest arises.
	Shareholder	Various publicly listed companies	No conflict identified	Seek advice prior to the meeting if actual or perceived conflict of interest arises.
	Property Owner	Residential Property Owner - Dunedin	No conflict identified	Seek advice prior to the meeting if actual or perceived conflict of interest arises.
	Beneficiary	Sans Peur Trust (Larnach Castle)	No conflict identified	Seek advice prior to the meeting if actual or perceived conflict of interest arises.
	Mentor	Business Mentors NZ	No conflict identified	Seek advice prior to the meeting if actual or perceived conflict of interest arises.
	Member	Southern Heritage Trust	No conflict identified	Seek advice prior to the meeting if actual or perceived conflict of interest arises.
	Member	Friends Otago Museum	No conflict identified	Seek advice prior to the meeting if actual or perceived conflict of interest arises.
	Member	Otago Peninsula Trust	No conflict identified	Seek advice prior to the meeting if actual or perceived conflict of interest arises.
	Member	Orokoni Ecosanctuary	No conflict identified	Seek advice prior to the meeting if actual or perceived conflict of interest arises.
	Volunteer	Blue Penguins Pukekura	No conflict identified	Seek advice prior to the meeting if actual or perceived conflict of interest arises.
	Member	Dunedin Vegetable Growers Club	No conflict identified	Seek advice prior to the meeting if actual or perceived conflict of interest arises.
	Committee Member	Otago Anniversary Day Dinner	No conflict Identified	Seek advice prior to the meeting if actual or perceived conflict of interest arises.
	Chairperson	Dunedin Heritage Fund (Council Appointment)	No conflict Identified	Seek advice prior to the meeting if actual or perceived conflict of interest arises.
	Member	Dunedin Gasworks Museum Trust (Council Appointment)	No conflict Identified	Seek advice prior to the meeting if actual or perceived conflict of interest arises.
	Member	Dunedin Otaru Sister City Society (Council Appointment)	No conflict Identified	Seek advice prior to the meeting if actual or perceived conflict of interest arises.
	Member	Hereweka Harbour Cone Trust (Council Appointment)	No conflict Identified	Seek advice prior to the meeting if actual or perceived conflict of interest arises.
	Member	Local Government New Zealand (Zone 6 Committee) (Council Appointment)	No conflict Identified	Seek advice prior to the meeting if actual or perceived conflict of interest arises.
	Member	Te Ao Tūroa Partnership (Council Appointment)	No conflict Identified	Seek advice prior to the meeting if actual or perceived conflict of interest arises.

Name	Responsibility (i.e. Chairperson etc)	Declaration of Interests	Nature of Potential Interest	Member's Proposed Management Plan
	Member	Connecting Dunedin (Council Appointment)	No conflict identified	Seek advice prior to the meeting if actual or perceived conflict of interest arises.
Cr David Benson-Pope	Owner	Residential Property Ownership in Dunedin	No conflict identified	Seek advice prior to the meeting if actual or perceived conflict of interest arises.
	Trustee and Beneficiary	Blind Investment Trusts	Duty to Trust may conflict with duties of Council Office	Seek advice prior to the meeting if actual or perceived conflict of interest arises.
	Member	Yellow-eyed Penguin Trust	No conflict identified	Seek advice prior to the meeting if actual or perceived conflict of interest arises.
	Member	New Zealand Labour Party	No conflict identified	Seek advice prior to the meeting if actual or perceived conflict of interest arises.
	Member	Dunedin Heritage Fund (Council Appointment)	No conflict identified	Seek advice prior to the meeting if actual or perceived conflict of interest arises.
	Member	Dunedin Public Art Gallery Acquisitions Committee (Council Appointment)	No conflict identified	Seek advice prior to the meeting if actual or perceived conflict of interest arises.
	Member	Otago Museum Trust Board (Council Appointment)	No conflict identified	Seek advice prior to the meeting if actual or perceived conflict of interest arises.
Cr Christine Garey	Trustee	Garey Family Trust - Property Ownership - Dunedin	No conflict identified	Seek advice prior to the meeting if actual or perceived conflict of interest arises.
	Member	Women of Ōtepoti	No conflict identified	Seek advice prior to the meeting if actual or perceived conflict of interest arises.
	Member (alternate)	Grow Dunedin Partnership (Council Appointment)	No conflict identified	Seek advice prior to the meeting if actual or perceived conflict of interest arises.
	Member	Otago Museum Trust Board (Council Appointment)	No conflict identified	Seek advice prior to the meeting if actual or perceived conflict of interest arises.
	Member	Sophia Charter (Council Appointment)	No conflict identified	Seek advice prior to the meeting if actual or perceived conflict of interest arises.
	Member	St Paul's Cathedral Foundation (Council Appointment)	No conflict identified	Seek advice prior to the meeting if actual or perceived conflict of interest arises.
	Member	Theomin Gallery Management Committee (Olveston) (Council Appointment)	No conflict identified	Seek advice prior to the meeting if actual or perceived conflict of interest arises.
Cr Kevin Gilbert	Owner	Gipfel Limited - Bakery	No conflict identified	Seek advice prior to the meeting if actual or perceived conflict of interest arises.
	Trustee	Schlubert Trust - Residential Property	No conflict identified	Seek advice prior to the meeting if actual or perceived conflict of interest arises.
	Trustee	Schlup Family Trust	No conflict identified	Seek advice prior to the meeting if actual or perceived conflict of interest arises.
	Member	BNI	No conflict identified	Seek advice prior to the meeting if actual or perceived conflict of interest arises.
	Member	Business South	No conflict identified	Seek advice prior to the meeting if actual or perceived conflict of interest arises.
	Shareholder	Air New Zealand	No conflict identified	Seek advice prior to the meeting if actual or perceived conflict of interest arises.
	Trustee	Kevin Gilbert and Esther Gilbert Partnership - Residential Rental Property	No conflict identified	Seek advice prior to the meeting if actual or perceived conflict of interest arises.
	Trustee	Biddies Trust	No conflict identified	Seek advice prior to the meeting if actual or perceived conflict of interest arises.

Name	Responsibility (i.e. Chairperson etc)	Declaration of Interests	Nature of Potential Interest	Member's Proposed Management Plan
	Advisors	Ronald McDonald House Supper Club Committee	No conflict identified	Seek advice prior to the meeting if actual or perceived conflict of interest arises.
	Member	Dunedin Fair Trading Committee (Council Appointment)	No conflict identified	Seek advice prior to the meeting if actual or perceived conflict of interest arises.
	Member	Local Government New Zealand (Zone 6 Committee) (Council Appointment)	No conflict identified	Seek advice prior to the meeting if actual or perceived conflict of interest arises.
	Member (alternate)	Otago Regional Transport Committee (Council Appointment)	No conflict identified	Seek advice prior to the meeting if actual or perceived conflict of interest arises.
	Member	Toitū Otago Settlers Museum Board (Council Appointment)	No conflict identified	Seek advice prior to the meeting if actual or perceived conflict of interest arises.
	Member	Keep Dunedin Beautiful (Council Appointment)	No conflict identified	Seek advice prior to the meeting if actual or perceived conflict of interest arises.
	Member	Otago Settlers Association (Council Appointment)	No conflict identified	Seek advice prior to the meeting if actual or perceived conflict of interest arises.
	Member	Saddle Hill Community Board (Council Appointment)	No conflict identified	Seek advice prior to the meeting if actual or perceived conflict of interest arises.
	Member	Connecting Dunedin (Council Appointment)	No conflict identified	Seek advice prior to the meeting if actual or perceived conflict of interest arises.
Cr Carmen Houlahan	Owner	Residential Property - Dunedin	No conflict identified	Seek advice prior to the meeting if actual or perceived conflict of interest arises.
	Owner	Rental Property - North Dunedin	No conflict identified	Seek advice prior to the meeting if actual or perceived conflict of interest arises.
	Part Owner	Adobe Group Ltd, Wanaka	No conflict identified	Seek advice prior to the meeting if actual or perceived conflict of interest arises.
	Member	Dunedin Rotary Club	No conflict identified	Seek advice prior to the meeting if actual or perceived conflict of interest arises.
	Member	Institute of Directors	No conflict identified	Seek advice prior to the meeting if actual or perceived conflict of interest arises.
	Member	Otago Property Investors Association	No conflict identified	Seek advice prior to the meeting if actual or perceived conflict of interest arises.
	Member	Dunedin Public Art Gallery Society (Council Appointment)	No conflict identified	Seek advice prior to the meeting if actual or perceived conflict of interest arises.
	Member	Dunedin Public Art Gallery Acquisitions Committee (Council Appointment)	No conflict identified	Seek advice prior to the meeting if actual or perceived conflict of interest arises.
	Member	Creative Dunedin Partnership (Council Appointment)	No conflict identified	Seek advice prior to the meeting if actual or perceived conflict of interest arises.
	Member	Otago Theatre Trust (Council Appointment)	No conflict identified	Seek advice prior to the meeting if actual or perceived conflict of interest arises.
Cr Marie Laufiso	Property Owner	Residential Property	No conflict identified	Seek advice prior to the meeting if actual or perceived conflict of interest arises.
	Trustee	Moray Place Community Building Trust - Trust Owner of Property 111 Moray Place	Duty to Trust may conflict with duties of Council Office	Seek advice prior to the meeting if actual or perceived conflict of interest arises.
	Chair	Otago Mental Health Support Trust	Potential grants applicant which would result in pecuniary interest. Duty to Trust may conflict with duties of Council Office	Do not participate in consideration of grants applications. If the meeting is in public excluded, to leave the room.
	Member	Women of Ōtepoti Recognition Initiative	No conflict identified	Seek advice prior to the meeting if actual or perceived conflict of interest arises.

Name	Responsibility (i.e. Chairperson etc)	Declaration of Interests	Nature of Potential Interest	Member's Proposed Management Plan
	Family Member	Staff member a relative	Potential conflict depending on level of staff member involvement	Managed by staff at officer level if a perceived conflict of interest arises.
	Secretary	Brockville Improvements and Amenities Society (BIAS)	No conflict identified	Seek advice prior to the meeting if actual or perceived conflict of interest arises.
	Trustee	Corso Ōtepoti Dunedin Trust	Potential grants recipient	Withdraw from discussion and leave the table. If in public excluded leave the room. Seek advice prior to the meeting.
	Member	Dunedin Manufacturing Holdings Inc	No conflict identified	Seek advice prior to the meeting if actual or perceived conflict of interest arises.
	Secretary	BIAS Charitable Trust	No conflict identified	Seek advice prior to the meeting if actual or perceived conflict of interest arises.
	Dunedin Branch Treasurer	P.A.C.I.F.I.C.A Inc	No conflict identified	Seek advice prior to the meeting if actual or perceived conflict of interest arises.
	Member	Green Party of Aotearoa New Zealand	No conflict identified	Seek advice prior to the meeting if actual or perceived conflict of interest arises.
	Member	Dunedin Abrahamic Interfaith Group (Council Appointment)	No conflict identified	Seek advice prior to the meeting if actual or perceived conflict of interest arises.
	Member	Dunedin Refugee Steering Committee (Council Appointment)	No conflict identified	Seek advice prior to the meeting if actual or perceived conflict of interest arises.
	Member	Social Wellbeing Advisory Group (Council Appointment)	No conflict identified	Seek advice prior to the meeting if actual or perceived conflict of interest arises.
	Member	District Licensing Committee (Council Appointment)	No conflict identified	Seek advice prior to the meeting if actual or perceived conflict of interest arises.
	Chairperson	Grants Subcommittee (Council Appointment)	No conflict identified	Seek advice prior to the meeting if actual or perceived conflict of interest arises.
Cr Cherry Lucas	Trustee	Otago Farmers Market	No conflict identified	Seek advice prior to the meeting if actual or perceived conflict of interest arises.
	Member	Otago A & P Society	No conflict identified	Seek advice prior to the meeting if actual or perceived conflict of interest arises.
	Trustee	Henderson Lucas Family Trust - Residential Dunedin Property	No conflict identified	Seek advice prior to the meeting if actual or perceived conflict of interest arises.
	Member	NZ Institute of Chartered Accountants	No conflict identified	Seek advice prior to the meeting if actual or perceived conflict of interest arises.
	Member	Otago Museum Trust Board (Council Appointment)	No conflict identified	Seek advice prior to the meeting if actual or perceived conflict of interest arises.
	Member	Dunedin Chinese Garden Advisory Board (Council Appointment)	No conflict identified	Seek advice prior to the meeting if actual or perceived conflict of interest arises.
	Member	Toitū Otago Settlers Museum Board (Council Appointment)	No conflict identified	Seek advice prior to the meeting if actual or perceived conflict of interest arises.
	Member (alternate)	Grow Dunedin Partnership (Council Appointment)	No conflict identified	Seek advice prior to the meeting if actual or perceived conflict of interest arises.
	Member	Mosgiel Taieri Community Board (Council Appointment)	No conflict identified	Seek advice prior to the meeting if actual or perceived conflict of interest arises.
	Member	Te Poāri a Pukekura Partnership (Council Appointment)	No conflict identified	Seek advice prior to the meeting if actual or perceived conflict of interest arises.
Cr Mandy Mayhem	Chairperson	Waitati Hall Society Inc	No conflict identified	Seek advice prior to the meeting if actual or perceived conflict of interest arises.

Name	Responsibility (i.e. Chairperson etc)	Declaration of Interests	Nature of Potential Interest	Member's Proposed Management Plan
	Chairperson	Blueskin News Committee	No conflict identified	Seek advice prior to the meeting if actual or perceived conflict of interest arises.
	Co-ordinator	Waitati Market	No conflict identified	Seek advice prior to the meeting if actual or perceived conflict of interest arises.
	Co-ordinator	Emergency response group, Blueskin area	No conflict identified	Seek advice prior to the meeting if actual or perceived conflict of interest arises.
	Member	FENZ Local Advisory Committee for Otago	No conflict identified	Seek advice prior to the meeting if actual or perceived conflict of interest arises.
	Member	Waitati Music Festival Committee	No conflict identified	Seek advice prior to the meeting if actual or perceived conflict of interest arises.
	Member	Blueskin Bay Amenities Society	No conflict identified	Seek advice prior to the meeting if actual or perceived conflict of interest arises.
	Member	Blueskin A & P Society	No conflict identified	Seek advice prior to the meeting if actual or perceived conflict of interest arises.
	Chairperson	Keep Dunedin Beautiful (Council Appointment)	No conflict identified	Seek advice prior to the meeting if actual or perceived conflict of interest arises.
	Deputy Chairperson	Keep New Zealand Beautiful	No conflict identified	Seek advice prior to the meeting if actual or perceived conflict of interest arises.
	Member	Coastal Community Cycleway Network	No conflict identified	Seek advice prior to the meeting if actual or perceived conflict of interest arises.
	Member	West Harbour Community Board (Council Appointment)	No conflict identified	Seek advice prior to the meeting if actual or perceived conflict of interest arises.
	Member	Disability Issues Advisory Group (Council Appointment)	No conflict identified	Seek advice prior to the meeting if actual or perceived conflict of interest arises.
	Member	Social Wellbeing Advisory Group (Council Appointment)	No conflict identified	Seek advice prior to the meeting if actual or perceived conflict of interest arises.
Cr Jim O'Malley	Owner	Biocentrix Ltd	No conflict identified	Seek advice prior to the meeting if actual or perceived conflict of interest arises.
	Member	Mosgiel Association Football Club	No conflict identified	Seek advice prior to the meeting if actual or perceived conflict of interest arises.
	Director	Ocho Newco Limited	No conflict identified	Seek advice prior to the meeting if actual or perceived conflict of interest arises.
	Owner	Residential Property Dunedin	No conflict identified	Seek advice prior to the meeting if actual or perceived conflict of interest arises.
	Owner	Ayrmed Limited	No conflict identified	Seek advice prior to the meeting if actual or perceived conflict of interest arises.
	Member	Ice Sports Dunedin Incorporated (Council Appointment)	No conflict identified	Seek advice prior to the meeting if actual or perceived conflict of interest arises.
	Member	Connecting Dunedin (Council Appointment)	No conflict identified	Seek advice prior to the meeting if actual or perceived conflict of interest arises.
	Member	Dunedin Hospital Local Advisory Group (Council Appointment)	No conflict identified	Seek advice prior to the meeting if actual or perceived conflict of interest arises.
	Member	Otago Regional Transport Committee (Council Appointment)	No conflict identified	Seek advice prior to the meeting if actual or perceived conflict of interest arises.
	Member	Okia Reserve Management Committee (Council Appointment)	No conflict identified	Seek advice prior to the meeting if actual or perceived conflict of interest arises.
	Member	Tertiary Precinct Planning Group (Council Appointment)	No conflict identified	Seek advice prior to the meeting if actual or perceived conflict of interest arises.

Name	Responsibility (i.e. Chairperson etc)	Declaration of Interests	Nature of Potential Interest	Member's Proposed Management Plan
	Member	Waikouaiti Coast Community Board (Council Appointment)	No conflict identified	Seek advice prior to the meeting if actual or perceived conflict of interest arises.
Lee Vandervis	Director	Lee Vandervis, Antonie Alm-Lequeux and Cook Allan Gibson Trustee Company Ltd - Residential Property Ownership - Dunedin	No conflict identified	Seek advice prior to the meeting if actual or perceived conflict of interest arises.
	Director	Bunchy Properties Ltd - Residential Property Ownership - Dunedin	No conflict identified	Seek advice prior to the meeting if actual or perceived conflict of interest arises.
	Owner	Vandervision Audio and Lighting - Hire, Sales and Service Business	May contract and provide service to DCC	Withdraw from discussion and leave the table. If the meeting is in public excluded leave the room. Seek advice prior to the meeting.
	Member	District Licensing Committee (Council Appointment)	No conflict identified	Seek advice prior to the meeting if actual or perceived conflict of interest arises.
	Member	Age Concern (Council Appointment)	No conflict identified	Seek advice prior to the meeting if actual or perceived conflict of interest arises.
	Member	Okia Reserve Management Committee (Council Appointment)	No conflict identified	Seek advice prior to the meeting if actual or perceived conflict of interest arises.
Steve Walker	Chairperson	Dunedin Wildlife Hospital Trust	Potential grants recipient	Withdraw from discussion and leave the table. If the meeting is in public excluded leave the room. Seek advice prior to the meeting.
	Chairperson	West Harbour Beautification Trust	Potential conflict WHBT work with Parks and Reserves to co-ordinate volunteer activities	Withdrawal from all West Harbour Beautification Trust/ DCC discussions involving this relationship.
	Member	Orokonui Ecosanctuary	Potential grants recipient	Withdraw from discussion and leave the table. If the meeting is in public excluded leave the room. Seek advice prior to the meeting.
	Member	Port Chalmers Golf Club	No conflict identified	Seek advice prior to the meeting if actual or perceived conflict of interest arises.
	Member	Society of Beer Advocates	No conflict identified	Seek advice prior to the meeting if actual or perceived conflict of interest arises.
	Member	New Zealand Labour Party	No conflict identified	Seek advice prior to the meeting if actual or perceived conflict of interest arises.
	Member	Port Chalmers Historical Society	Potential grants recipient	Seek advice prior to the meeting if actual or perceived conflict of interest arises.
	Owner	Residential Property - Dunedin	No conflict identified	Seek advice prior to the meeting if actual or perceived conflict of interest arises.
	Shareholder	Various publicly listed companies	No conflict identified	Seek advice prior to the meeting if actual or perceived conflict of interest arises.
	Member	NZ Sea Lion Trust	No conflict identified	Seek advice prior to the meeting if actual or perceived conflict of interest arises.
	Member	Dunedin Edinburgh Sister City Society (Council Appointment)	No conflict identified	Seek advice prior to the meeting if actual or perceived conflict of interest arises.
	Member	Predator Free Dunedin (Council Appointment)	No conflict identified	Seek advice prior to the meeting if actual or perceived conflict of interest arises.
Cr Brent Weatherall	Member	Urban Access	No conflict identified	Seek advice prior to the meeting if actual or perceived conflict of interest arises.
	Owner	Residential Property	No conflict identified	Seek advice prior to the meeting if actual or perceived conflict of interest arises.
	Owner	Business George Street, Dunedin	No conflict identified	Seek advice prior to the meeting if actual or perceived conflict of interest arises.
	Trustee	Brent Weatherall Jeweller Limited	No conflict identified	Seek advice prior to the meeting if actual or perceived conflict of interest arises.
	Trustee	Weatherall Trustee Company	No conflict identified	Seek advice prior to the meeting if actual or perceived conflict of interest arises.

Name	Responsibility (i.e. Chairperson etc)	Declaration of Interests	Nature of Potential Interest	Member's Proposed Management Plan
	Trustee	Residential Rental Properties	No conflict identified	Seek advice prior to the meeting if actual or perceived conflict of interest arises.
	Member	Craigieburn Reserve Committee (Council Appointment)	No conflict identified	Seek advice prior to the meeting if actual or perceived conflict of interest arises.
	Member	Dunedin Public Art Gallery Society (Council Appointment)	No conflict identified	Seek advice prior to the meeting if actual or perceived conflict of interest arises.
Andrew Whiley	Owner/Operator	Whiley Golf Inc and New Zealand Golf Travel Ltd	No conflict identified	Seek advice prior to the meeting if actual or perceived conflict of interest arises.
	Director/Shareholder 22 May 2017	Estate of Grace Limited	No conflict identified	Seek advice prior to the meeting if actual or perceived conflict of interest arises.
	Trustee	Japek (Family Trust) - Property Ownership - Dunedin	Duties to Trust may conflict with duties of Council Office.	Seek advice prior to the meeting if actual or perceived conflict of interest arises.
	Member	Otago Golf Club	No conflict identified	Seek advice prior to the meeting if actual or perceived conflict of interest arises.
	Member	Dunedin South Rotary Club	No conflict identified	Seek advice prior to the meeting if actual or perceived conflict of interest arises.
	Member	Institute of Directors	No conflict identified	Seek advice prior to the meeting if actual or perceived conflict of interest arises.
	Member	National Party	No conflict identified	Seek advice prior to the meeting if actual or perceived conflict of interest arises.
	Chairman	Volunteer South	No conflict identified	Seek advice prior to the meeting if actual or perceived conflict of interest arises.
	President	New Zealand PGA (Professional Golf Association)	No conflict identified	Seek advice prior to the meeting if actual or perceived conflict of interest arises.
	Chair	Dunedin Community House Executive Committee	Potential grants recipient	Seek advice prior to the meeting if actual or perceived conflict of interest arises.
	Member	Otago Property Investors Association	No conflict identified	Seek advice prior to the meeting if actual or perceived conflict of interest arises.
	Member	Chisholm Links Golf Club	No conflict identified	Seek advice prior to the meeting if actual or perceived conflict of interest arises.
	Member	Hereweka Harbour Cone Trust (Council Appointment)	No conflict identified	Seek advice prior to the meeting if actual or perceived conflict of interest arises.
	Member	Otago Peninsula Community Board (Council Appointment)	No conflict identified	Seek advice prior to the meeting if actual or perceived conflict of interest arises.
	Member	Dunedin Shanghai Association (Sister City Society) (Council Appointment)	No conflict identified	Seek advice prior to the meeting if actual or perceived conflict of interest arises.
	Member	Grow Dunedin Partnership (Council Appointment)	No conflict identified	Seek advice prior to the meeting if actual or perceived conflict of interest arises.
	Member	NZ Masters Games Trust Board (Council Appointment)	No conflict identified	Seek advice prior to the meeting if actual or perceived conflict of interest arises.
	Member	Puketāi Residential Centre Liaison Committee (Council Appointment)	No conflict identified	Seek advice prior to the meeting if actual or perceived conflict of interest arises.

PART A REPORTS

COMMUNITY SERVICES COMMITTEE FORWARD WORK PROGRAMME - MARCH 2023

Department: Civic

EXECUTIVE SUMMARY

- 1 The purpose of this report is to provide a regular update of the Community Services Committee forward work programme to show areas of activity, progress and expected timeframes for decision making across a range of areas of work. (Attachment A).
- 2 As this is an administrative report only, there are no options or Summary of Considerations.

RECOMMENDATIONS

That the Committee:

- a) **Notes** the Community Services Committee forward work programme as shown in Attachment A.

DISCUSSION

- 3 The forward work programme will be a regular agenda item which shows areas of activity, progress and expected timeframes for decision making across a range of areas of work.
- 4 As an update report, purple highlights show changes to timeframes. New Items added to the schedule will be highlighted in yellow. Items that have been completed or updated are shown as bold.

Signatories

Author:	Lauren Riddle - Governance Support Officer
Authoriser:	Simon Pickford - General Manager Community Services

Attachments

	Title	Page
A	Community Services Forward Work Programme - February 2023	15

Community Services Committee Forward Work Programme 2022/2023 - March 2023															
Area of Work	Reason for Work	Council role (decision and/or direction)	Expected timeframe												
			Feb	Mar	Apr	May	June	July	Aug	Sep	Oct	Nov	Dec	Jan	Feb
Aquatics review	Include discussions with the Therapeutic Pool Trust as part of the Aquatics Network Review (Council 23 May 22; CAPCC/2022/034).	Aquatics review will inform the 2023/24 Annual Plan. Progress to date: A report was presented to the 22 February 2023 Annual Plan meeting. Council requested investigating potential co-investment options with the Ministry of Education, and to report back in time for the 10 year plan.	Report to Council	Ongoing work											Report to Council
Destination playground	Prepare an options report for the development of a new destination playground, in time for the 2022/23 Annual Plan. (Council - 31 May 21; CNL/2021/130)	Consider options for a destination playground. Progress to date: A Destination Playground report was presented to the 22 February 2023 Council meeting, where Council approved developing concept plans for three existing destination playspaces. Concept plans will be prepared and consulted on as part of Stage 2 of community engagement, during the 2023/24 year. (CAPCC/2022/035)	Report to Council	Ongoing work											
Minutes	Work of the: Grants Subcommittee Toitū Otago Settlers Museum Board	Noting the minutes from the meetings of the Grants Subcommittee and the Toitū Otago Settlers Museum Board. Progress to date: Minutes from both the Grants Subcommittee and the Toitū Otago Settlers Museum Board will be presented as required.		As and when required											
Community Housing	Continue exploring working in partnership with other housing providers. (Council - 31 May 21)	Consider progress reports; make decisions as necessary. Progress to date: An update report is on the agenda.		Report											

Area of Work	Reason for Work	Council role (decision and/or direction)	Expected timeframe												
			Feb	Mar	Apr	May	June	July	Aug	Sep	Oct	Nov	Dec	Jan	Feb
Performing Arts Venue	Undertake further engagement with the performing arts community on options for a performing arts venue. (Council - 31 May 21)	Decide on options Progress to date: At the 2022 Council Annual Plan deliberations meeting, a resolution asked staff to assist the Dunedin Theatre Network to explore funding pathways. Funding is required to support the delivery of costed concept designs for the refurbishment of the Playhouse, Athenaeum and Mayfair Theatres. Staff from across the organisation have worked in collaboration with the Dunedin Theatre Network. The Network plans to present to Council as part of the 2023 Annual Plan deliberations meeting. (CAPCC/2022/032)				Deliberations meeting									
Live Music Action Plan	Facilitate the creation of a Live Music Action Plan with interested parties. (Council - 31 May 21)	Consider the Live Music Action Plan Progress to date: Staff from across the organisation have worked in collaboration with representatives from Save Dunedin Live Music. A comprehensive list of draft operational actions for Council staff has been developed. Staff are now working on the strategic vision of the plan and finalising the last stages. The plan is expected to be completed in June 2023.													
Updates from Advisory Group meetings	Receive minutes and/or updates from advisory and steering groups that relate to the Committee's areas of responsibility.	Notes the minutes and/or updates from advisory and steering groups including the Social Well-being Advisory Group, Disabilities Issues Advisory Group and Dunedin Refugee Steering Group. Progress to date: A report providing the minutes and updates from the advisory and steering groups will be presented to the July C&C Committee meeting.		As and when required											
Submissions to central government and other external parties.	Provide feedback on proposals from central government and other external parties.	Consider and decide on draft submission on central government and other external parties proposals. Progress to date: Submissions will be presented as required.		As and when required											

ŌTEPOTI DUNEDIN HOUSING PLAN UPDATE

Department: Property

EXECUTIVE SUMMARY

- 1 This report provides an update on the Ōtepoti Dunedin Housing Plan 2022 ('the Plan') which Council adopted on 30 August 2022 (Attachment B), and to present the Implementation Plan 2023-2024 which identifies the priority actions for the first 18 months.
- 2 The Implementation plan 2023-2024 is shown in Attachment A, and progress to date is discussed below.

RECOMMENDATIONS

That the Committee:

- a) **Notes** the Ōtepoti Dunedin Housing Plan 2022 Update

BACKGROUND

- 3 Council adopted the Ōtepoti Dunedin Housing Plan 2022 at its meeting 30 August 2022. The Plan forms the overarching vision and goals for housing in Dunedin.
- 4 The Plan recognises that Council needs to work in partnership with the community, and focuses on the right to decent housing, enriching the well-being of our people, connecting our communities, reflecting our diversity, having homes that are adaptive to our climate and exploring innovative solutions.
- 5 Ongoing engagement with the community, and regular reporting to Committee and the community is a key component of the plan. This will be done holding regular hui and regular newsletters to the organisations and individuals that wish to be part of helping to achieve the Plans goals, as well as regular updates to this Committee.

DISCUSSION

Implementation Plan 2023-2024

- 6 The Implementation Plan 2023-2024 has 5 priority work areas. These have been developed in consultation with stakeholders. Each of the priorities has actions aligned to them.
- 7 The layout of the Implementation Plan 2023-2024 (Attachment A) follows the same format and approach as the Play Spaces Plan 2021 and will be published on the DCC website with regular updates on progress against the actions.

8 Some of the actions will be time limited discreet pieces of work, while others will be ongoing and may evolve over time in response to changes in Central Government policies, stakeholder feedback on priorities, and changes to housing issues within the city.

9 The priorities for 2023-2024 are -

- Bring people together to strengthen and create connections
- Investigate ways to increase the quality of our housing
- Find better ways to use land for housing
- Make it easier to work with Council
- Look after our most vulnerable

10 The Implementation Plan 2023-2024 actions are -

Priority	Actions	Progress to date
Bring people together to strengthen and create connections	<p>Facilitate cross-agency stakeholder hui on housing topics (e.g. homelessness, collaborative funding)</p> <p>Create a nation-wide council group for sharing information and approaches</p> <p>Develop a regular newsletter to Dunedin stakeholders to keep everyone updated on all things housing</p> <p>Build a contact database of Dunedin stakeholders to enable better sharing of information</p>	<p>January 2023 - Homelessness hui held (see below priority <i>Look After our most vulnerable for future work</i>)</p> <p>December 2022 - Cross-council (NZ) group including Hamilton, Christchurch, Palmerston North, Thames, and Waitaki created.</p> <p>October 2022 - Cross-Council (NZ) stakeholder contact list, with regular information sharing via email created.</p> <p>In development</p> <p>August 2022 - Contact database created and ongoing introductions by the Housing Advisor</p>
Investigate ways to increase the quality of our housing	<p>Build a series of on-line resources that are easy to understand and accessible</p> <p>Develop an options analysis for possible incentives to encourage –</p> <ul style="list-style-type: none"> • Building and retrofitting homes 	<p>2GP Variation 2 search facility draft developed to enable landowners to easily identify building options on their land.</p> <p>Initial options for Incentive scheme identified which includes financial/non-financial implications.</p> <p>Options to be presented to Council in time for 10 Year Plan 2024-2034.</p>

	<p>with design for everyone (Universal Design/designing for disabilities)</p> <ul style="list-style-type: none"> • Making homes warmer • Reducing construction waste 	
Find better ways to utilise land for housing	<p>Build a council wide approach to DCC owned land and look for housing development options</p> <p>Work with landowners and stakeholders to identify opportunities for housing development and partnerships</p> <p>Council advocating for additional funding from Central Government to support housing development</p>	<p>Initial discussions with Parks, Property, and 3 Waters staff.</p> <p>Ongoing</p> <p>Initial work to identify opportunities for working with government agencies and stakeholders</p>
Make it easy to work with Council	<p>Create an online DCC housing portal that is easy to find and search.</p> <p>Create easy to read resources and opportunities for education on the 2GP, designing for everyone, and saving energy</p>	<p>Initial discussions with DCC Web and BIS team held.</p> <p>See above (<i>Investigate ways to increase the quality of our housing</i>).</p> <p>Working with Community Group (SCAN), DCC Eco-Designer, 3 Waters and Carbon Zero team to investigate options e.g. LED replacement, low flow shower head installation.</p>
Look after our most vulnerable	<p>Create a joined-up approach to address homelessness in our city</p>	<p>December 2023 – commenced research on potential models for a strategic city-wide approach to homelessness.</p> <p>January 2023 – Initial hui with MSD, Corrections, Night Shelter, PACT, Kāinga Ora, NZ Police, Te Whatu Ora, and DCC Property, Parks and Libraries</p> <p>March 2023 – Next hui planned</p>

Other work undertaken in the last period

- The Housing Advisor continues to contribute to and coordinate a range of housing associated work and workstreams across Council. These workstreams include the South Dunedin Futures Scenario Planning, involvement in the Corporate Policy Strategic Refresh and co-leading the Community and Social Housing Workstream of the Future Development Strategy.

- 12 The Housing Advisor also remains the conduit within the DCC for information requests from Kainga Ora.
- 13 The Housing Advisor is continuing to build stakeholder engagement by making contact with and presenting the Ōtepoti Dunedin Housing Plan 2022 to agencies, groups and individuals.

OPTIONS

- 14 There are no options as this report is for noting.

NEXT STEPS

- 15 The Housing Advisor will continue to work on the identified priorities and actions for 2023-2024

Signatories

Author:	Gill Brown - Housing Action Plan Advisor
Authoriser:	Robert West - General Manager Corporate and Quality Sandy Graham - Chief Executive Officer

Attachments

	Title	Page
↓A	Housing Plan 2022 Implementation plan 2023-2024	23
↓B	Otepoti Dunedin Housing Plan 2022	25

SUMMARY OF CONSIDERATIONS

Fit with purpose of Local Government

This decision enables democratic local decision making and action by, and on behalf of communities and promotes the social well-being of communities in the present and for the future.

Fit with strategic framework

	Contributes	Detracts	Not applicable
Social Wellbeing Strategy	<input checked="" type="checkbox"/>	<input type="checkbox"/>	<input type="checkbox"/>
Economic Development Strategy	<input checked="" type="checkbox"/>	<input type="checkbox"/>	<input type="checkbox"/>
Environment Strategy	<input checked="" type="checkbox"/>	<input type="checkbox"/>	<input type="checkbox"/>
Arts and Culture Strategy	<input type="checkbox"/>	<input type="checkbox"/>	<input checked="" type="checkbox"/>
3 Waters Strategy	<input checked="" type="checkbox"/>	<input type="checkbox"/>	<input type="checkbox"/>
Spatial Plan	<input checked="" type="checkbox"/>	<input type="checkbox"/>	<input type="checkbox"/>
Integrated Transport Strategy	<input checked="" type="checkbox"/>	<input type="checkbox"/>	<input type="checkbox"/>
Parks and Recreation Strategy	<input checked="" type="checkbox"/>	<input type="checkbox"/>	<input type="checkbox"/>
Other strategic projects/policies/plans	<input checked="" type="checkbox"/>	<input type="checkbox"/>	<input type="checkbox"/>

The Ōtepoti Dunedin Housing Plan 2022 and Implementation Plan 2023-2024 contributes to an effective housing eco-system for the city and contributes to the DCC's strategic framework.

Māori Impact Statement

For Māori, housing is about more than economic outcomes and material security. Housing cuts across many aspects of Māori wellbeing, such as whānau health, acquisition and use of te reo Māori, care of whenua and the environment, the ability to provide sustenance and hospitality for themselves and others, and many aspects of wellbeing that are unique to Māori culture. There are a number of large multidisciplinary and multi-agency research projects working alongside Māori communities to empower Māori in the housing sector and developing the knowledge needed to address severe housing deprivation, homelessness, social housing, affordable rental options, ownership and papakainga development. The Corporate Policy team is in touch with a number of these large research projects, to develop relationships and exchange information to inform the development of the Council's Strategic Refresh project, the Māori Strategic Framework and enhance our understanding of Māori aspirations for wellbeing.

Sustainability

Sustainability has been identified as a key issue through ongoing consultation with the community and stakeholders.

LTP/Annual Plan / Financial Strategy /Infrastructure Strategy

This work is in line with the Annual Plan 2023-24.

Financial considerations

Funding for the Principal Housing Advisor is included in the Annual Plan 2023-24 budget.

Significance

This report is considered of low significance in terms of the Councils Significance and Engagement Policy.

SUMMARY OF CONSIDERATIONS

Engagement – external

External engagement with stakeholders across the city has been extensive and is ongoing

Engagement - internal

There has been internal engagement across many DCC departments

Risks: Legal / Health and Safety etc.

There are no identified risks

Conflict of Interest

There are no known conflicts of interest.

Community Boards

All six Community Boards were engaged in the development of the Ōtepoti Dunedin Housing Plan 2022, and actions in the Plan will include Community Board areas.

He kāika mō te katoa A home for everyone

HOUSING IMPLEMENTATION PLAN

2023 - 2024

As a kaitiaki of our city's housing ecosystem, the Dunedin City Council has now identified the priority areas to help drive improved housing outcomes for our city.

OUR GUIDING PRINCIPLES

DECENT HOUSING IS A HUMAN RIGHT

WORK IN PARTNERSHIP WITH MANA WHENUA

WORK TOGETHER FOR COMMON OUTCOMES

ENCOURAGE AND ENABLE ADAPTIVE AND SUSTAINABLE SOLUTIONS

DECISIONS ARE EVIDENCE-INFORMED AND SOLUTIONS-FOCUSED

GET THE JOB DONE



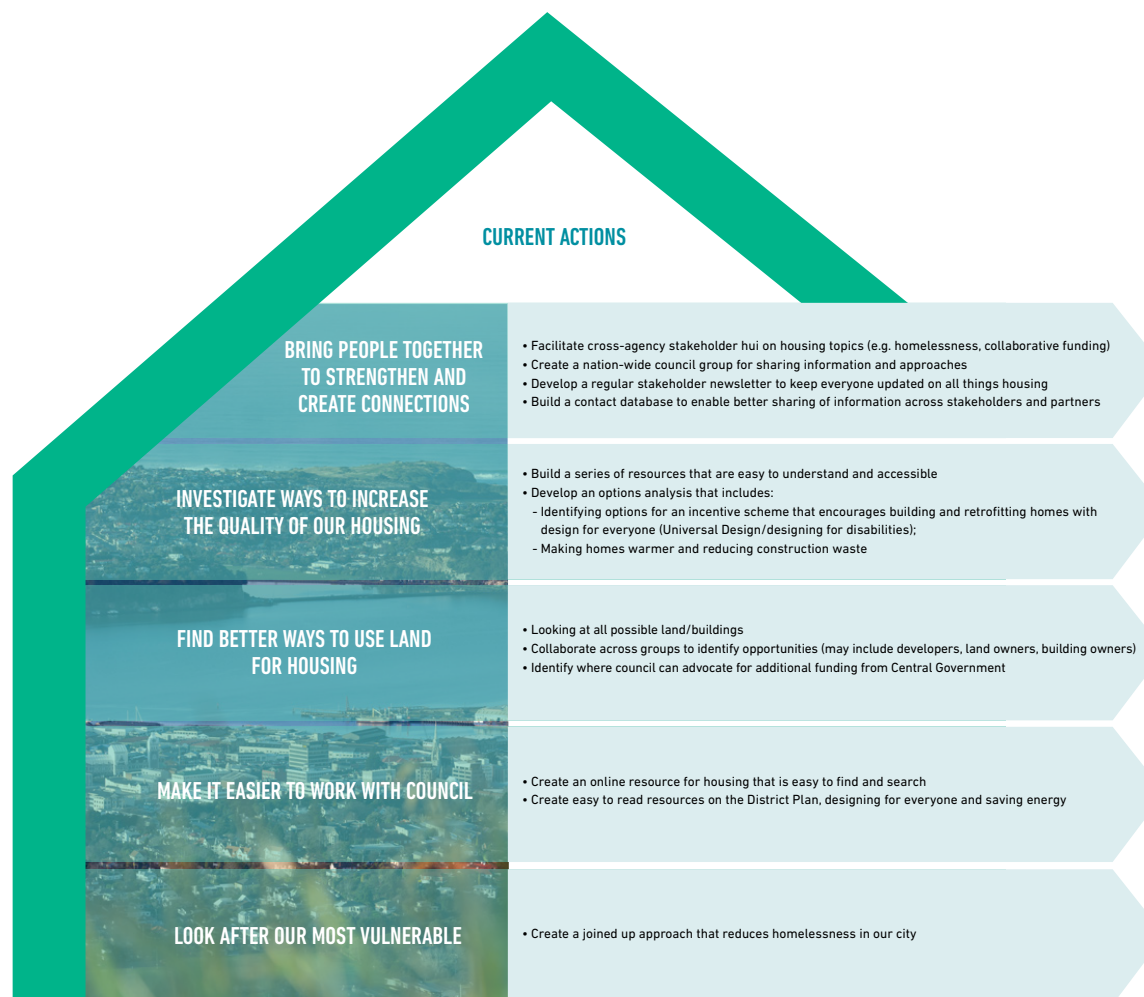
IMAGE: MACANDREW BAY. CREDIT: DUNEDINNZ

IMPLEMENTATION ACTIONS

2023 - 2024

We have created five areas of focus based on discussions with our stakeholders.

Some might be completed by June 2024 but some may take longer.



Each year, as we continue to engage with our community stakeholders about what's important when it comes to improving housing in our city, further implementation actions will be identified.

To view our Housing Plan, please visit www.dunedin.govt.nz/housing-plan



**at
home**
in Ōtepoti

HOUSING PLAN 2022

 **DUNEDIN** | kaunihera
CITY COUNCIL | a-rohe o
Ōtepoti

contents

OUR VISION

AN INTRODUCTION	01
-----------------	----

THE CONTEXT

BACKGROUND	03
COMMUNITY ENGAGEMENT	04
PLAN ON A PAGE	05
THE HOUSING CONTINUUM	06

THE PLAN

GOAL 1	08
GOAL 2	09
GOAL 3	10
GOAL 4	11
GOAL 5	12

THE DELIVERY

IMPLEMENTATION	14
GLOSSARY OF TERMS	15

our vision



**He kāika
mō te
katoa**
**A home for
everyone**

ŌTEPOTI DUNEDIN, IT'S OUR CITY TO CALL HOME

AN INTRODUCTION



A home is more than a house; a home embodies our intrinsic human values to feel safe and secure. Homes are the places we associate with warmth, togetherness and our own sense of community. They are the places we relax, socialise, cook, study, work, raise our children, celebrate and just be.

Here at the Dunedin City Council, we have a vision for Ōtepoti Dunedin to have a 'home for everyone'. For us that simply means ensuring our city's homes meet the needs of our community now and into the future.

Stable housing has wide-reaching impacts and must meet a diverse range of needs. Our housing needs to be accessible and available to all income levels, ages and circumstances. Ōtepoti Dunedin's residents need to live well, whatever their situation.

The Dunedin City Council is a kaitiaki of the city housing ecosystem, holding both a provider and regulatory role. Working with our many partners will help drive improved housing outcomes for everyone in Dunedin.

The Dunedin City Council Housing Plan provides a set of principles and goals to bring the vision for housing in the city to life. This Housing Plan will be supported by an annually identified set of measurable and achievable actions created in partnership with our community.

The Housing Plan focuses on the right to decent housing, enriching the well-being of our people, connecting our communities, reflecting our diversity, having homes that are adaptive to our climate and exploring innovative solutions.

Our homes need to be one of the reasons people choose to live, work and play here.

Together, let's make it happen

| 01





**no place
like home**

A PLAN BUILT FROM SOLID FOUNDATIONS

THE CONTEXT

HOMES FOR A CHANGING CITY

THE BACKGROUND



Our city faces various challenges including climate change, an aging population and a growing number of people choosing to live here.

The make up of our city is changing and number of people living here growing. This means changes to the number and style of homes we need.

Population growth creates a pressure on the city's rental costs, house prices and our construction sector. The impacts of this pressure is not only felt by the most vulnerable within our community but also by our construction sector and wider economy. Some businesses have identified housing availability is impacting on their ability to grow.

Alongside the city's population growth, the climate is changing which will have impacts on the way Ōtepoti Dunedin looks and we need to identify how we will respond.

Dunedin City Council continues to be proactive in the provision of housing primarily for the elderly and plans to continue to play its part. Our portfolio is one of the largest held by a New Zealand council, having 940 units out of a total across the country of approximately eight thousand.

Everyone needs decent housing in this changing environment.

OUR CITY IS GROWING BY
1,400 PEOPLE
ON AVERAGE EACH YEAR

THE DCC PROVIDES
940 COMMUNITY HOUSES
(THE MOST IN THE SOUTH ISLAND)



WHAT YOU TOLD US

COMMUNITY ENGAGEMENT

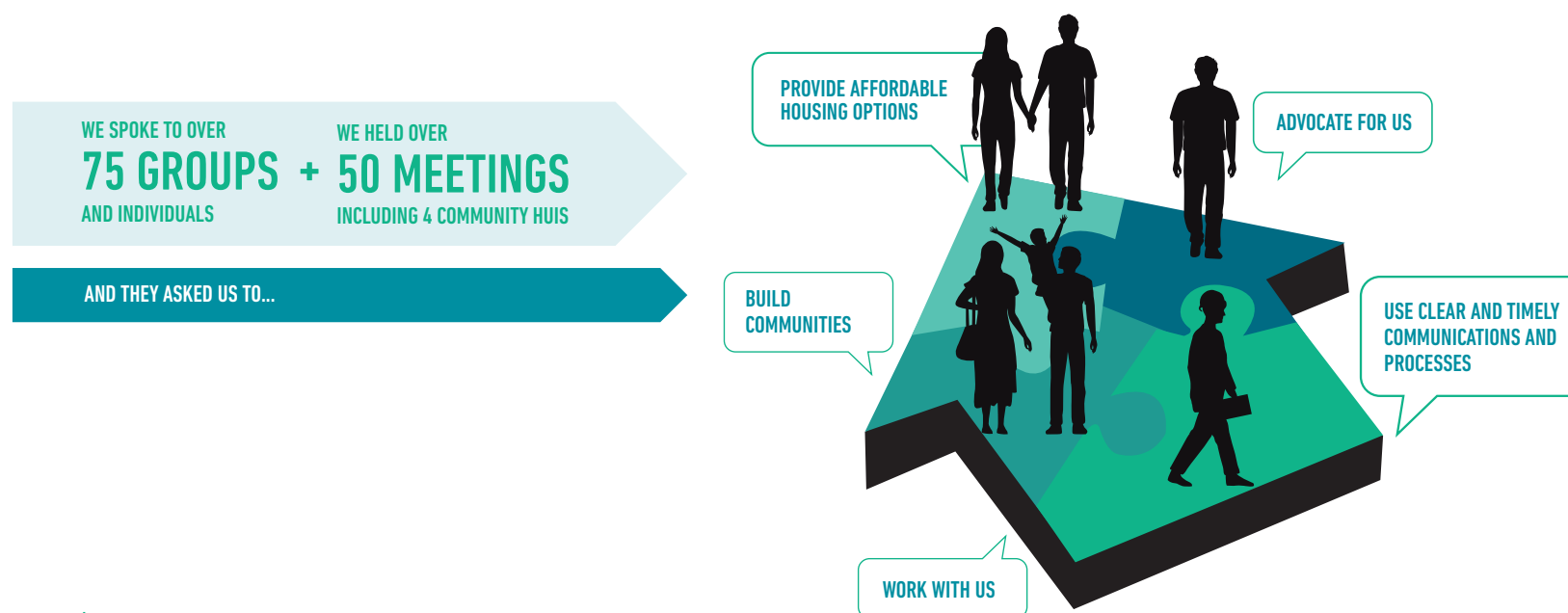


We have asked our community for feedback, tested ideas, and collaborated with a range of interested partners as part of developing this Plan.

There were a range of issues we wanted to canvas with the community. We needed to understand so we talked with a range of individuals and groups. We spoke with a variety of age groups, business, Government agencies, developers, real estate agents and community housing providers. We also spoke with groups from the disability sector, not-for-profit and community organisations.

Special thanks to all of those who generously gave their time.

It is important to us that our goals reflect the needs and aspirations of our city.



HOMES BUILT WITH PURPOSE

PLAN ON A PAGE



The feedback and input from our partners, together with Dunedin City Council's analysis of trends impacting our city has helped develop the Housing Plan for Ōtepoti Dunedin.



| 05

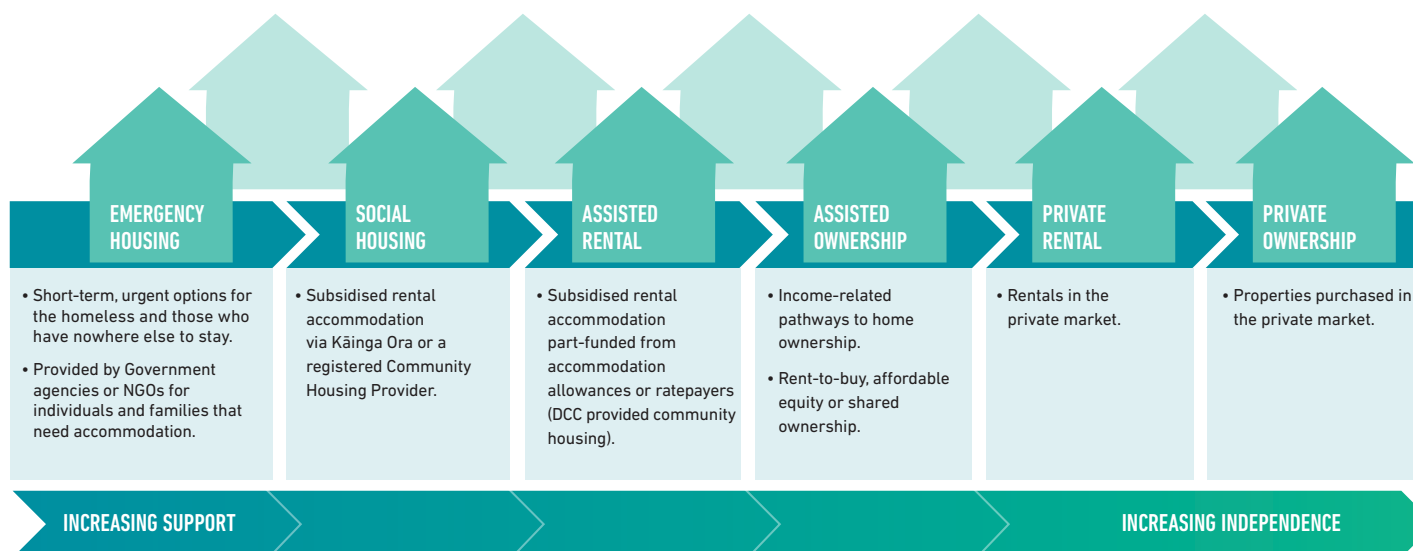
HOMES BUILT FOR DIFFERENT NEEDS

THE HOUSING CONTINUUM



We needed to consider the total housing ecosystem when creating the Housing Plan.

The Housing Plan is based on the global framework for addressing housing adequacy, which was adapted for New Zealand by 'Community Housing Aotearoa' in 2014.



GLOBAL HOUSING ADEQUACY FRAMEWORK

TO ENSURE A SECURE, AFFORDABLE, HABITABLE, ACCESSIBLE, CULTURALLY APPROPRIATE, CONVENIENTLY LOCATED AND SERVICED HOUSING SYSTEM



**a home for
everyone**

OUR HOUSING PLAN

THE DETAIL

OUR HOMES ENRICH THE HEALTH AND WELL-BEING OF OUR PEOPLE

GOAL
1

Our city has a character and personality that makes it a special place to live but our homes need to support and enhance the well-being of our people. Many of Ōtepoti Dunedin's homes do not perform at a level appropriate for our climate or that expected in a modern city.

Our home environment impacts us beyond having a place to eat and sleep. There is significant data noting that housing has impacts on physical and mental health, education outcomes and combating social issues such as loneliness.

As our population changes, so do our housing needs. The Dunedin City Council commits to focusing on the long-term wellness and changing needs of our communities. This relies on collaboration with our partners and engagement with our communities.

We want both new and existing homes that are safer, warmer, drier and future-proofed.

Council priorities

We will work with our community and industry to ensure our housing standards improve the overall wellness of our residents

We will build awareness around the use of home-rating and building tools so our city's homes are better than the minimum standards

We will encourage stronger partnerships across the building and community housing sectors, so our homes are future-proofed to meet the needs of our population

We will advocate for equitable access to housing

For more information, or to view our annual implementation plans as they are developed, please visit www.dunedin.govt.nz/housing-plan

| 08



OUR HOMES REFLECT THE DIVERSE NEEDS OF OUR PEOPLE

GOAL
2

We need to understand the unique and diverse housing needs of our communities. Housing plays a role in the economic, environmental, cultural and social aspirations of Ōtepoti Dunedin's people.

The Dunedin City Council knows housing plays a key role in encouraging a sense of connection and social inclusion both within and across diverse communities. By promoting a strong social infrastructure across our city, connections form. This connectivity, belonging and inclusion is good for everyone.

Dunedin City Council is committed to creating this connectivity. We want neighbourhoods that link homes to businesses, play spaces, community gardens, parks and beaches.

We will continue to explore the changing needs of our population to enable our vision of 'a home for everyone'. Our diversity is ultimately our strength as a city.

Council priorities

We will collaborate with the housing sector to ensure homes meet people's needs

We will promote the use of universal design principles to ensure our housing meets accessibility needs and those of an aging population

We will plan for homes to be built around social, connected spaces

For more information, or to view our annual implementation plans as they are developed, please visit www.dunedin.govt.nz/housing-plan

| 09



OUR HOMES ARE SUSTAINABLE AND RESILIENT

GOAL
3

Housing plays a role in helping reduce our overall carbon footprint and contributes to our goal of being a carbon neutral city.

We will encourage a long-term view on sustainability options such as energy costs, building placements, waste and advocacy for increased building performance.

Ōtepoti Dunedin will be impacted by climate challenges and we all have a part to play in how we respond. Dunedin City Council's goal is to become a sustainable, carbon-zero city and housing plays a part in achieving this goal.

We will continue to adapt our housing planning and actions to respond to Ōtepoti Dunedin's changing environment.

Council priorities

We will educate our community on environmentally sustainable building materials and practice

We will explore options for incentivising building practice that supports our carbon zero goals

We will encourage a long-term energy efficiency building focus in both new and refurbished homes

For more information, or to view our annual implementation plans as they are developed, please visit www.dunedin.govt.nz/housing-plan

| 10



WE ENCOURAGE INNOVATIVE AND AFFORDABLE OPTIONS

GOAL
4

For Ōtepoti Dunedin to be a vibrant, liveable city, a broad range of housing options must be available.

Increased demand and changing needs mean we need to find ways to get more homes.

We will work to create an environment where the community can develop innovative solutions to ownership and land use. These may include such models as Community Land Trusts, Co-housing, Co-operative Housing Development, or Rent-to-own.

Council priorities

We will look at how we share information about alternative options

We will put the right people together

We will work with industry and the community to enable vibrant and innovative housing solutions

For more information, or to view our annual implementation plans as they are developed, please visit
www.dunedin.govt.nz/housing-plan

| 11



WE ARE A PROACTIVE AND ENABLING PARTNER

GOAL
5

The Dunedin City Council holds a significant amount of building sector information, and know we have a key role in educating and sharing our knowledge to improve Dunedin's housing outcomes.

The Dunedin City Council will do our part with industry to ensure buildings are well-made, healthy, durable and safe.

Given our knowledge of the building sector we will work openly with our customers and stakeholders to assist, educate, inform and support innovative solutions and ideas.

There is a lot of information that is both complex and technical. The Dunedin City Council will ensure the information is accessible, easy to understand and available to all.

The Dunedin City Council is committed to working across our communities and industry partners to find a range of housing solutions.

Council priorities

Dunedin City Council will take a solutions-focused approach

We will collaborate and work in partnership with industry

We will help our residents access the right information and services they need

For more information, or to view our annual implementation plans as they are developed, please visit www.dunedin.govt.nz/housing-plan

| 12





**at the heart
of our homes**

IMPLEMENTATION IN PARTNERSHIP

THE DELIVERY

WHERE TO FROM HERE

IMPLEMENTATION



Dunedin City Council is committed to working with our many partners to ensure the solutions for Ōtepoti Dunedin's housing reflects the needs and aspirations of our community.

Achieving the vision will require kaitiaki from the Dunedin City Council and will need cooperation from the private, public and philanthropic sectors to make it succeed.

We will plan an annual work programme and actions towards these goals in consultation with our community.

We will keep you updated on how we're going.



GLOSSARY OF TERMS

GLOSSARY



Co-housing

is a cluster of private homes generally with shared community space. Homes are generally on individual title. The shared facilities are co-owned by the collective, run by a resident-led decision-making process. Often co-housing is based around shared values such as environmental impact, gender or age and require levels of collective involvement.

Co-operative Housing

is a style of residential housing that is a corporation whereby the owners do not own their units outright. Instead, each resident is a shareholder in the corporation based on the relative size of the unit that they live in.

Community Land Trusts

are democratic, non-profit organisations that own and develop land for the benefit of the community. The non-profit trust leases the land at a nominal fee. Without the land cost the homes bought are available at a more affordable purchase price. There are often agreements made at point of purchase on future sales for the homes to remain 'affordable'.

Rent-to-own

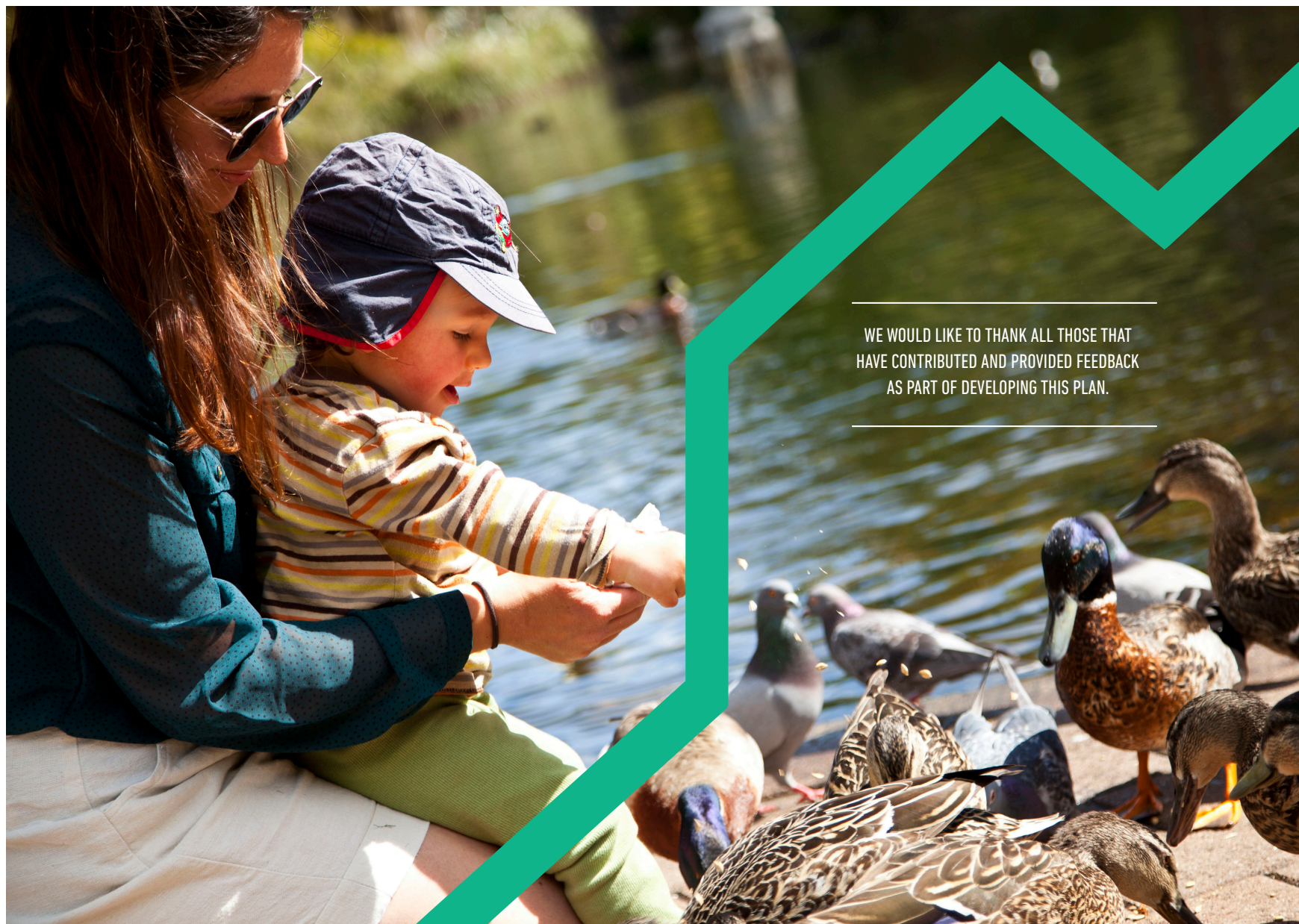
is aimed at people who cannot easily obtain a mortgage to buy a home due to a poor credit history, irregular income or lack of deposit. A portion of the rent is put 'aside' to enable a deposit to be built up. Normally when the agreed timeframe/deposit is met, a purchase agreement is made.

Social Housing

is housing offered by a registered Community Housing Provider or Kāinga Ora. There are specific qualifying eligibility criteria, and the social housing applicant register is managed by the Ministry of Social Development.

Universal Design

is the process of creating homes that are accessible to people with a wide range of abilities, disabilities and other characteristics. There are seven principles of Universal Design – equitable use, flexibility in use, simple and intuitive use, perceptible information, tolerance for error, low physical effort, size and space for approach and use.





 **DUNEDIN** | kaunihera
CITY COUNCIL | a-rohe o
Ōtepoti

FOR MORE INFORMATION
PO Box 5045, Dunedin 9054, New Zealand
phone 03 477 4000
email dcc@dcc.govt.nz

 @DunedinCityCouncil
 @DnCityCouncil