

**Notice of Meeting:**

I hereby give notice that an ordinary meeting of the Mosgiel-Taieri Community Board will be held on:

**Date:** Wednesday 12 June 2024  
**Time:** 12.30 pm  
**Venue:** Downes Room, Mosgiel Service Centre, Hartstonge Avenue,  
Mosgiel

Sandy Graham  
Chief Executive Officer

---

**Mosgiel-Taieri Community Board**  
**PUBLIC AGENDA**

---

**MEMBERSHIP**

<b>Chairperson</b>	Andrew Simms	
<b>Deputy Chairperson</b>	Dean McAlwee	
<b>Members</b>	Kathryn Anderson	Austen Banks
	Regan Horrell	Cr Cherry Lucas
	Brian Peat	
<b>Senior Officer</b>	Sharon Bodeker, Special Projects Lead	
<b>Governance Support Officer</b>	Jennifer Lapham	

---

Jennifer Lapham  
Governance Support Officer

Telephone: 03 477 4000  
governance.support@dcc.govt.nz  
[www.dunedin.govt.nz](http://www.dunedin.govt.nz)

**Note:** Reports and recommendations contained in this agenda are not to be considered as Council policy until adopted.



<b>ITEM</b>	<b>TABLE OF CONTENTS</b>	<b>PAGE</b>
1	Public Forum	4
1.1	Public Forum - Mosgiel Taieri Community Patrol	4
2	Apologies	4
3	Confirmation of Agenda	4
4	Declaration of Interest	5
5	Confirmation of Minutes	9
5.1	Mosgiel-Taieri Community Board meeting - 17 April 2024	9
<b>PART A REPORTS (Mosgiel-Taieri Community Board has power to decide these matters)</b>		
6	Road naming of three private ways	15
7	Project Fund	41
8	Governance Support Officer's Report	47
9	Community Plan	73
10	Board Updates	74
11	Chairperson's Report	75
12	Councillor's Update	79
13	Items for Consideration by the Chair	80

## **1 PUBLIC FORUM**

### **1.1 Public Forum - Mosgiel Taieri Community Patrol**

Mr Dave Mitchell will be in attendance to speak to the application for funding from the Mosgiel Taieri Community Patrol.

## **2 APOLOGIES**

An apology has been received from Brian Peat.

That the Board:

**Accepts** the apology from Brian Peat.

## **3 CONFIRMATION OF AGENDA**

Note: Any additions must be approved by resolution with an explanation as to why they cannot be delayed until a future meeting.



## DECLARATION OF INTEREST

---

### EXECUTIVE SUMMARY

1. Members are reminded of the need to stand aside from decision-making when a conflict arises between their role as an elected representative and any private or other external interest they might have.
2. Elected members are reminded to update their register of interests as soon as practicable, including amending the register at this meeting if necessary.

### RECOMMENDATIONS

That the Board:

- a) **Notes/Amends** if necessary the Elected Members' Interest Register attached as Attachment A; and
- b) **Confirms/Amends** the proposed management plan for Elected Members' Interests.

### Attachments

	<b>Title</b>	<b>Page</b>
 A	Register of Interest	6

<b>Mosgiel-Taieri Community Board Register of Interest 12 June 2024</b>				
<b>Name</b>	<b>Responsibility (ie: Chairperson etc)</b>	<b>Declaration of Interests</b>	<b>Nature of Potential Interest</b>	<b>Proposed Management Plan</b>
Andrew Simms	Owner	Residential Property, Mosgiel	No conflict identified	identified. Seek advice on actual or potential conflicts of interest prior to the meeting.
	Owner	Commercial Property, Property	No conflict identified	Withdraw from discussion and leave the table if a conflict of interest is identified. Seek advice on actual or potential conflicts of interest prior to the meeting.
	Managing Director	The Landseer Group Ltd	No conflict identified	Withdraw from discussion and leave the table if a conflict of interest is identified. Seek advice on actual or potential conflicts of interest prior to the meeting.
	Managing Director	Landseer Motor Investments Auckland Limited t/a Andrew Simms	No conflict identified	Withdraw from discussion and leave the table if a conflict of interest is identified. Seek advice on actual or potential conflicts of interest prior to the meeting.
	Director	Stephen Duff Motos Limited	No conflict identified	Withdraw from discussion and leave the table if a conflict of interest is identified. Seek advice on actual or potential conflicts of interest prior to the meeting.
	Managing Director	Minaret Property Investments Ltd	No conflict identified	Withdraw from discussion and leave the table if a conflict of interest is identified. Seek advice on actual or potential conflicts of interest prior to the meeting.
	Trustee	The Newfoundland Trust	No conflict identified	Withdraw from discussion and leave the table if a conflict of interest is identified. Seek advice on actual or potential conflicts of interest prior to the meeting.
	Trustee	The Moturata Trust	No conflict identified	Withdraw from discussion and leave the table if a conflict of interest is identified. Seek advice on actual or potential conflicts of interest prior to the meeting.
	Tenant	Wall Street Mall	No conflict identified	Withdraw from discussion and leave the table if a conflict of interest is identified. Seek advice on actual or potential conflicts of interest prior to the meeting.
	Trustee	Taieri Community Facilities Trust	No conflict identified	Withdraw from discussion and leave the table if a conflict of interest is identified. Seek advice on actual or potential conflicts of interest prior to the meeting.
	Member	Taieri Cricket Club	No conflict identified	Withdraw from discussion and leave the table if a conflict of interest is identified. Seek advice on actual or potential conflicts of interest prior to the meeting.
Kathryn Anderson	Owner	Residential Property Owner, Mosgiel	No conflict identified	Withdraw from discussion and leave the table if a conflict of interest is identified. Seek advice on actual or potential conflicts of interest prior to the meeting.
	Chairperson	Silverstream Primary School Board of Trustees	No conflict identified	Withdraw from discussion and leave the table if a conflict of interest is identified. Seek advice on actual or potential conflicts of interest prior to the meeting.
	Member	Silverstram Primary School Friends of School	No conflict identified	Withdraw from discussion and leave the table if a conflict of interest is identified. Seek advice on actual or potential conflicts of interest prior to the meeting.
	Employee	Solutions and Services Ltd	No conflict identified	Withdraw from discussion and leave the table if a conflict of interest is identified. Seek advice on actual or potential conflicts of interest prior to the meeting.
	Member	CAANZ (Chartered Accountants Australian and New Zealand	No conflict identified	Withdraw from discussion and leave the table if a conflict of interest is identified. Seek advice on actual or potential conflicts of interest prior to the meeting.
	Member	Coeliac New Zealand	No conflict identified	Withdraw from discussion and leave the table if a conflict of interest is identified. Seek advice on actual or potential conflicts of interest prior to the meeting.
	Involved	Taieri Tennis Club	No conflict identified	Withdraw from discussion and leave the table if a conflict of interest is identified. Seek advice on actual or potential conflicts of interest prior to the meeting.

	Involved	Mosgiel Scout Group	No conflict identified	Withdraw from discussion and leave the table if a conflict of interest is identified. Seek advice on actual or potential conflicts of interest prior to the meeting.
	Involved	Taieri Rugby Club	No conflict identified	Withdraw from discussion and leave the table if a conflict of interest is identified. Seek advice on actual or potential conflicts of interest prior to the meeting.
	Involved	Taieri Plains Junior Netball	No conflict identified	Withdraw from discussion and leave the table if a conflict of interest is identified. Seek advice on actual or potential conflicts of interest prior to the meeting.
Austen Banks	Owner	Residential property - Mosgiel	No conflict identified	Withdraw from discussion and leave the table if a conflict of interest is identified. Seek advice on actual or potential conflicts of interest prior to the meeting.
	Member	Dunedin Club	No conflict identified	Withdraw from discussion and leave the table if a conflict of interest is identified. Seek advice on actual or potential conflicts of interest prior to the meeting.
	Director	Mosgiel Rotary Club	No conflict identified	Withdraw from discussion and leave the table if a conflict of interest is identified. Seek advice on actual or potential conflicts of interest prior to the meeting.
	Member	University Club	No conflict identified	Withdraw from discussion and leave the table if a conflict of interest is identified. Seek advice on actual or potential conflicts of interest prior to the meeting.
	Member	Otago Yacht Club	No conflict identified	Withdraw from discussion and leave the table if a conflict of interest is identified. Seek advice on actual or potential conflicts of interest prior to the meeting.
	Employee	Vet Life Animal Health Partners	No conflict identified	Withdraw from discussion and leave the table if a conflict of interest is identified. Seek advice on actual or potential conflicts of interest prior to the meeting.
	Trustee	Mary Charles Trust	No conflict identified	Withdraw from discussion and leave the table if a conflict of interest is identified. Seek advice on actual or potential conflicts of interest prior to the meeting.
	Shareholder	Various publicly listed companies	No conflict identified	Withdraw from discussion and leave the table if a conflict of interest is identified. Seek advice on actual or potential conflicts of interest prior to the meeting.
	Member	Dunedin Clay Target Club	No conflict identified	Withdraw from discussion and leave the table if a conflict of interest is identified. Seek advice on actual or potential conflicts of interest prior to the meeting.
	Member	Otago A & P Society	No conflict identified	Withdraw from discussion and leave the table if a conflict of interest is identified. Seek advice on actual or potential conflicts of interest prior to the meeting.
	Zone 6 Representative	Community Board Executive Committee	No conflict identified	Withdraw from discussion and leave the table if a conflict of interest is identified. Seek advice on actual or potential conflicts of interest prior to the meeting.
Dean McAlwee	Committee Member	West Taieri Rugby Club	Potential grants recipient	Withdraw from discussion and leave the table if a conflict of interest is identified. Seek advice on actual or potential conflicts of interest prior to the meeting.
	Owner	Residential Property, Mosgiel	No conflict identified	Withdraw from discussion and leave the table if a conflict of interest is identified. Seek advice on actual or potential conflicts of interest prior to the meeting.
	Member	Taieri Trails Group	No conflict identified	Withdraw from discussion and leave the table if a conflict of interest is identified. Seek advice on actual or potential conflicts of interest prior to the meeting.
	Member	Outram Emergency Group	No conflict identified	Withdraw from discussion and leave the table if a conflict of interest is identified. Seek advice on actual or potential conflicts of interest prior to the meeting.
	Owner	Commercial Property, Mosgiel	No conflict identified	Withdraw from discussion and leave the table if a conflict of interest is identified. Seek advice on actual or potential conflicts of interest prior to the meeting.

Brian Peat	Owner	Residential Property, Mosgiel	No conflict identified	Withdraw from discussion and leave the table if a conflict of interest is identified. Seek advice on actual or potential conflicts of interest prior to the meeting.
	Project Manager	Silverstram Beautification Project	No conflict identified	Withdraw from discussion and leave the table if a conflict of interest is identified. Seek advice on actual or potential conflicts of interest prior to the meeting.
	National President	Retirement Village Residents Association NZ	No conflict identified	Withdraw from discussion and leave the table if a conflict of interest is identified. Seek advice on actual or potential conflicts of interest prior to the meeting.
Cr Cherry Lucas	Trustee	Otago Farmers Market	No conflict identified.	Withdraw from discussion and leave the table if a conflict of interest is identified. Seek advice on actual or potential conflicts of interest prior to the meeting.
	Member	Otag A & P Society	No conflict identified.	Withdraw from discussion and leave the table if a conflict of interest is identified. Seek advice on actual or potential conflicts of interest prior to the meeting.
	Trustee	Henderson Lucas Family Trust - Residential Dunedin Property	No conflict identified.	Withdraw from discussion and leave the table if a conflict of interest is identified. Seek advice on actual or potential conflicts of interest prior to the meeting.
	Member	NZ Institute of Chartered Accountants	No conflict identified.	Withdraw from discussion and leave the table if a conflict of interest is identified. Seek advice on actual or potential conflicts of interest prior to the meeting.
	Member	Otago Museum Trust Board (Council Appointment)	No conflict identified	Seek advice prior to the meeting if actual or perceived conflict of interest arises.
	Member	Dunedin Chinese Garden Advisory Board (Council Appointment)	No conflict identified	Seek advice prior to the meeting if actual or perceived conflict of interest arises.
	Member	Toitū Otago Settlers Museum Board (Council Appointment)	No conflict identified	Seek advice prior to the meeting if actual or perceived conflict of interest arises.
	Member (alternate)	Grow Dunedin Partnership (Council Appointment)	No conflict identified	Seek advice prior to the meeting if actual or perceived conflict of interest arises.
	Member	Mosgiel Taieri Community Board (Council Appointment)	No conflict identified	Seek advice prior to the meeting if actual or perceived conflict of interest arises.
	Representative	Local Government New Zealand - Zone 6	No conflict identified	Seek advice prior to the meeting if actual or perceived conflict of interest arises.
	Member	Te Poāri a Pukekura Partnership (Council Appointment)	No conflict identified	Seek advice prior to the meeting if actual or perceived conflict of interest arises.

## **CONFIRMATION OF MINUTES**

### **MOSGIEL-TAIERI COMMUNITY BOARD MEETING - 17 APRIL 2024**

#### **RECOMMENDATIONS**

That the Board:

- a) **Confirms** the minutes of the Mosgiel-Taieri Community Board meeting held on 17 April 2024 as a correct record.

#### **Attachments**

	<b>Title</b>	<b>Page</b>
<a href="#">A↓</a>	Minutes of Mosgiel-Taieri Community Board meeting held on 17 April 2024	10

## **Mosgiel-Taieri Community Board**

### **MINUTES**

Minutes of an ordinary meeting of the Mosgiel-Taieri Community Board held in the Downes Room, Mosgiel Service Centre, Hartstonge Avenue, Mosgiel on Wednesday 17 April 2024, commencing at 12.30 pm

#### **PRESENT**

<b>Chairperson</b>	Andrew Simms
<b>Deputy Chairperson</b>	Dean McAlwee
<b>Members</b>	Kathryn Anderson
	Austen Banks
	Regan Horrell
	Brian Peat
	Cr Cherry Lucas

**IN ATTENDANCE** Sharon Bodeker (Special Projects Lead).

**Governance Support Officer** Jennifer Lapham

#### **1 PUBLIC FORUM**

##### **1.1 Public Forum - Dunedin Tracks Network Trust**

Sarah Davie-Nitis, Paul Coffey and Colin Brown spoke to the Board about the Taieri Trail Project. They advised that the first focus was on Stage 1 with the Mosgiel to Outram trail. Ms Davie-Nitis advised that they were seeking funding from the Board and a letter of support for the project.

##### **1.2 Public Forum – Kevin Phillips**

Kevin Phillip spoke to the Board about his safety concerns on the Taieri Gorge railway. He was concerned that the track and bridges etc would take substantially funding to fix the safety issues.

## **2 APOLOGIES**

There were no apologies.

## **3 CONFIRMATION OF AGENDA**

Moved (Andrew Simms/Austen Banks):

That the Board:

**Confirms** the agenda without addition or alteration

**Motion carried (MTCB/2024/016)**

## **4 DECLARATIONS OF INTEREST**

Members were reminded of the need to stand aside from decision-making when a conflict arose between their role as an elected representative and any private or other external interest they might have.

Kathryn Anderson advised that she was now the Chairperson of the Silverstream Primary School Board of Trustees.

Moved (Andrew Simms/Cr Cherry Lucas):

That the Board:

- a) **Amends** the Elected Members' Interest Register; and
- b) **Confirms** the proposed management plan for Elected Members' Interests.

**Motion carried (MTCB/2024/017)**

## **5 CONFIRMATION OF MINUTES**

### **5.1 MOSGIEL-TAIERI COMMUNITY BOARD MEETING - 8 FEBRUARY 2024**

Moved (Andrew Simms/Austen Banks):

That the Board:

**Confirms** the minutes of the Mosgiel-Taieri Community Board meeting held on 08 February 2024 as a correct record.

**Motion carried (MTCB/2024/018)**

## **PART A REPORTS**

### **6 PROJECT FUND**

Consideration was given to a funding application from the Dunedin Tracks Network Trust for \$2,000. The costs have not yet been incurred, nor covered in the pre-build costs.

Moved (Kathryn Anderson/Cr Cherry Lucas):

That the Board:

**Approves** a grant of \$2000.00 to the Dunedin Tracks Network Trust.

**Motion carried (MTCB/2024/019)** with Brian Peat voting against.

### **7 DRAFT COMMUNITY PLAN 2024/25**

Cr Lucas withdrew from discussion on this item.

A discussion took place on the draft 2024/25 Community Plan and a number of minor changes were made.

During the discussion Brian Peat left the meeting at 2.05 pm.

Moved (Andrew Simms/Austen Banks):

That the Board:

**Approves**, as amended, the 2024/24 Community Plan.

**Motion carried (MTCB/2024/020)**

### **8 GOVERNANCE SUPPORT OFFICER'S REPORT**

In a report from Civic the Governance Support Officer provided an update on matters of interest including;

- a) Project Fund
- b) Dunedin City Council Draft Annual Plan 2024-2025
- c) Aurora Energy Consultation
- d) Otago Regional Council Draft Long Term Plan



- e) Waste Management and Minimisation Plan (2020)
- f) Correspondence – Mrs M Henry

Moved (Andrew Simms/Kathryn Anderson):

That the Board:

- a) **Notes** the Governance Support Officer's Report.
- b) **Agrees** to make a submission to the draft DCC Annual Plan 2024/25, noting that it will be ratified at the next Board meeting being held on 12 June 2024.
- c) **Agrees** to not make a submission to the Aurora Energy Proposal, but the board encourages members of the community to make their own submissions.
- d) **Agrees** to make a submission to the draft Otago Regional Council Draft Long Term Plan, noting that it will be ratified at the next Board meeting being held on 12 June 2024.

**Motion carried (MTCB/2024/021)**

## **9 BOARD UPDATES**

### **BOARD MEMBERS TO PROVIDE VERBAL UPDATES ON ACTIVITIES :**

#### **1 Taieri Network**

Kathryn Anderson advised that the Taieri Network is getting less enquiries about the Community Board. The Network is currently working on an event for Matariki.

#### **2 Coronation Hall Trust**

Dean McAlwee was unable to attend the meeting.

#### **3 Mosgiel and Taieri Emergency Group**

Andrew Simms advised that there was better communication between the group and Civil Defence.

#### **4 Outram Emergency Group**

Dean McAlwee advised that the Outram Emergency Group is a subset of the Mosgiel and Taieri Emergency Group.

#### **5 Social Media/Media Platform and Community Engagement**

Regan Horrell provided an update on the OAR Radio session.

#### **6 Community Events**

Kathryn advised that there was nothing to report regarding community events. However she did provide an update on the Memorial Garden Reserve Management Plan

Committee advising that they were looking at the details of the history of the Memorial Garden and Reserve.

**7 Taieri Trails Group**

Andrew Simms advised that this had been covered by the presentation in the Public Forum.

**8 Community Board Executive Committee**

Regan Horrell advised they the results from the survey are being finalised. The Community Board Conference would be held in Wellington late August.

**10 CHAIRPERSON'S REPORT**

In a report the Chairperson provided an update on matters of interest including the updating of the Community Plan, submitting to the Future Development Strategy and the upcoming consultations from the Dunedin City Council and Otago Regional Council.

**11 COUNCILLOR'S UPDATE**

Cr Lucas provided an update on matters of interest including the Annual Plan drop in sessions and the her work on the Future Development Strategy.

**12 ITEMS FOR CONSIDERATION BY THE CHAIR**

Matters raised where

- An additional sign on Gordon Road to indicate the swimming pool, and
- a missing street light on the corner of Gordon and School road intersection, and
- the 30K limit on Factory Road.

The meeting concluded at 2.40 pm.

.....  
**CHAIRPERSON**

## **PART A REPORTS**

### **ROAD NAMING OF THREE PRIVATE WAYS**

Department: Transport

---

#### **EXECUTIVE SUMMARY**

- 1 This report seeks support from the Mosgiel-Taieri Community Board on the proposed naming of three private ways in the Mosgiel-Taieri area.
- 2 The new names proposed by the developers for the private ways are:
  - **‘Wilden Lane’** is the preferred name, with **‘Wantwood Lane’** as the alternative name, for Stage 2 of the subdivision located at 80 School Road South, Taieri. While **‘Wilden Lane’** does not fully comply with the Road Naming Policy, it is supported by staff. **‘Wantwood Lane’** complies with the Policy but was not supported as a road name by the Mosgiel-Taieri Community Board and the Infrastructure Services Committee (ISCOM) earlier in the year.
  - **‘Cottage Lane’** as the developer’s preferred name and **‘Stables Lane’** as the alternative, for the subdivision located at 267 Gladstone Road North. **‘Cottage Lane’** does not fully comply with the Road Naming Policy due to the similarity to another road name in Dunedin, but this option may still be supported providing the suffix is changed to **‘Cottage Drive’**. **‘Stables Lane’** complies with the DCC Road Naming Policy.
  - **‘Mako Lane’** as the preferred name for the subdivision located at 4, 6 and 8 Lorne Street for a project led by ‘Kāinga Ora-Homes and Communities’. This option complies with the DCC Road Naming Policy and was approved as part of the Road Name Register by the Infrastructure Services and Networks Committee in 2017.

#### **RECOMMENDATIONS**

That the Board:

- a) **Supports** the naming of the new private way off School Road South, Taieri as **‘Wilden Lane’** or as **‘Wantwood Lane’**.
- b) **Supports** the naming of the new private way off Gladstone Road North, as **‘Cottage Drive’** or as **‘Stables Lane’**.
- c) **Supports** the naming of the new private way off Lorne Street, as **‘Mako Lane’**.

## BACKGROUND

- 3 The DCC Road Naming Policy provides the framework for timely and consistent naming of roads that reflect the identity of the local community. The DCC Road Naming Policy requires that Community Boards consider proposed names for roads in their area. For reference, the Road Naming Policy and Road Naming Procedure can be accessed on the DCC website at [www.dunedin.govt.nz/road-naming](http://www.dunedin.govt.nz/road-naming).
- 4 A 'legal road' is any road legally vested in the council for the purpose of a road.
- 5 A 'private way' is a privately owned driveway, lane, or access way which serves as access from private properties to a public road.
- 6 The Road Naming Policy requires staff to consult with Community Boards where road names are proposed for Community Board areas.
- 7 The three private ways to be named are part of subdivisions located within the Mosgiel-Taieri Community Board area.

## DISCUSSION

- 8 The table presented below details the options proposed by the property developers or surveyors, and their compliance with the Road Naming Policy. Additional details including a full assessment for each proposed road name, evidence of consent where relevant, and geographic details of the new roads are provided in Attachments A to I.
- 9 It should be noted that the Road Naming Policy places less weight on the appropriateness criteria with respect to private ways.

### Summary of proposed road names

Development details	Location of road	Proposed road name	Alternative roadname	Recommend ed road name
80 School Road South, Taieri (Stage 2)	New private way off School Road South	Wilden Lane	Wantwood Lane	<b>Wilden Lane</b>
267 Gladstone Road North	New private way off Gladstone Road North	Cottage Lane	Stables Lane	<b>Cottage Drive</b>
4, 6 and 8 Lorne Street Kainga Ora	New private way off Lorne Street	Mako Lane		<b>Mako Lane</b>

### Subdivision at 80 School Road South

- 10 The developer has proposed '**Wilden Lane**' as the preferred option for the private way coming off School Road South for Stage 2 of the subdivision.

- 11 The preferred name **‘Wilden Lane’** holds personal significance for the developer's family who have a farming background. According to the developer, the name honours the pioneering history and development of a significant farming community in the Otago area, often referred as the ‘Wilden Area’. One of the project's pioneers is retired farmer Bill Gibson, who now resides in Mosgiel. ‘Wilden Estate’ originated as a subdivision of the extensive Moa Flat Station in the early 1900s and has since evolved into an 1800-hectare farm and run block. Between 2013 and 2017, research was conducted into the history of this land, resulting in the publication of the book ‘Wilden - The Story of the West Otago Farming Community’, which is held by the University of Otago's Hocken Collection.
- 12 ‘Wilden’ is similar to the name of an existing commercial farm in the Otago region named as ‘Wilden Station’. Due to existence of a current commercial association, the name does not fully align to the Road Naming Policy (Clause 4.4) but staff support this option as the name is similar (but not identical), to the commercial organisation and is also a historic reference.
- 13 The alternative name **‘Wantwood Lane’**, has some historical and geographical significance for the area. ‘Wantwood Station’ was the name of a farm located within the Waimea Valley and is also associated to the Otago region through the New Zealand Agricultural Company and specifically through its former Directors, William Larnach, Robert Stout and Julius Vogel who were prominent Otago Settlers. However, the Mosgiel-Taieri Community Board and ISCOM did not support the use of this name when it was first presented in February 2024, considering it too similar to ‘Wychwood Lane’, approved for the private way for Stage 1 of this subdivision.

#### **Subdivision at 267 Gladstone Road North**

- 14 The developer has proposed **‘Cottage Lane’** as the preferred option for the private way coming off Gladstone Road North of the subdivision and **‘Stables Lane’** as the alternative option.
- 15 The name ‘Cottage’ has some historical connection with the use of the land and refers to a cottage originally built around 1907, which still stands near the access road to the property. According to the developer, the name also alludes to the style of the houses being constructed on the land where eight out of nine houses are built in a "cottage style".
- 16 **‘Cottage Lane’** as proposed by the developer is similar but not identical to another private road named ‘Old Cottage Lane’ within Dunedin, on Blueskin Road, Waitati. Following recent discussions with Land Information New Zealand, staff do not anticipate confusion due to the name not being identical and the two roads being over 25 km apart, meeting the essential requirement for addressing purposes. Nevertheless, staff recommend changing the suffix to **‘Cottage Drive’** to ensure clear distinction between the two names.
- 17 **‘Stables Lane’** was presented as the alternative option for this subdivision. The name has some significance as the land was originally used to house jockeys who trained horses on the property. **‘Stables Lane’** complies with the Road Naming Policy.

#### **Subdivision at 4, 6 and 8 Lorne Street-Kainga Ora**

- 18 The developer has proposed **‘Mako Lane’** as the only option presented for the private way coming off Lorne Street. According to the application, ‘Mako’ (which refers to a type of New Zealand flora), may be found in the area.

- 19 The name has been approved in 2017 by the then Infrastructure Services and Networks Committee to become part of the Road Name Register. 'Mako' or 'Makomako', scientifically known as 'Aristotelia serrata', is a small tree native to Aotearoa. Early settlers referred to it as 'wineberry' or 'New Zealand currant'. This tree, with bright green foliage, typically reaches heights of up to 9 meters and is widespread across the country. In early summer, it produces flowers that are succeeded by berries ranging in colour from white to pink, red, and black.
- 20 The spelling of the list of Māori names approved in 2017, which includes 'Mako', was reviewed by staff and the Te Reo Māori consultancy 'Tēnei te Ruru Ltd' to confirm the appropriateness of the proposed names. '**Mako Lane**' complies with the Road Naming Policy.

## **OPTIONS**

**Option One – Recommended Option - The Board supports the preferred options proposed as 'Wilden Lane', 'Cottage Drive' and 'Mako Lane' as the names for the three new private ways**

### *Advantages*

- The road will be named, and land owners gain a street address allowing them to progress with building and access to services.

### *Disadvantages*

- There are no significant disadvantages identified with this option.

**Option Two – Alternative Option – The Board supports the alternative options proposed as 'Wantwood Lane, 'Stables Lane' and the preferred option 'Mako Lane' as the names for the three new private ways**

### *Advantages*

- The road will be named, and land owners gain a street address allowing them to progress with building and access to services.

### *Disadvantages*

- There are no significant disadvantages identified with this option.

**Option Three – Status Quo - The Board does not support either of the options proposed as 'Wilden Lane' or 'Wantwood Lane', 'Cottage Drive' or 'Stables Lane' and, 'Mako Lane' for the three new private ways**

### *Advantages*

- There are no advantages identified with this option.

### *Disadvantages*

- The roads will not have a name until a new option is presented. This may inconvenience new or potential new property owners within the subdivision.

## NEXT STEPS

- 21 If the proposed names are supported by the Community Board, staff will request formal approval from the Infrastructure Services Committee

## Signatories

Author:	Paula Barragan - Senior Transport Planner
Authoriser:	Jeanine Benson - Group Manager Transport Scott MacLean - General Manager, Climate and City Growth

## Attachments

	Title	Page
<a href="#">↓A</a>	Attachment A - Assessment for Wilden Lane	22
<a href="#">↓B</a>	Attachment B - Assessment for Wantwood Lane	24
<a href="#">↓C</a>	Attachment C - 80 School Road - Site Plan	27
<a href="#">↓D</a>	Attachment D - Assessment for Cottage Lane	29
<a href="#">↓E</a>	Attachment E - Assessment for Stables Lane	31
<a href="#">↓F</a>	Attachment F - 267 Gladstone Road-Site Plan	33
<a href="#">↓G</a>	Attachment G - Assessment for Mako Lane	35
<a href="#">↓H</a>	Attachment H - Background makomako-wineberry	36
<a href="#">↓I</a>	Attachment I - 4, 6 and 8 Lorne Street Site Plan	39

## SUMMARY OF CONSIDERATIONS

### ***Fit with purpose of Local Government***

This decision enables democratic local decision making and action by, and on behalf of communities. This decision promotes the social, economic, environmental and cultural well-being of communities in the present and for the future.

### ***Fit with strategic framework***

	Contributes	Detracts	Not applicable
Social Wellbeing Strategy	<input type="checkbox"/>	<input type="checkbox"/>	✓
Economic Development Strategy	<input type="checkbox"/>	<input type="checkbox"/>	✓
Environment Strategy	<input type="checkbox"/>	<input type="checkbox"/>	✓
Arts and Culture Strategy	<input type="checkbox"/>	<input type="checkbox"/>	✓
3 Waters Strategy	<input type="checkbox"/>	<input type="checkbox"/>	✓
Spatial Plan	✓	<input type="checkbox"/>	✓
Integrated Transport Strategy	<input type="checkbox"/>	<input type="checkbox"/>	✓
Parks and Recreation Strategy	<input type="checkbox"/>	<input type="checkbox"/>	✓
Other strategic projects/policies/plans	✓	<input type="checkbox"/>	<input type="checkbox"/>

This is an administrative function.

### ***Māori Impact Statement***

Staff have worked with Te Reo experts to review the option proposed as 'Mako Lane' and continue to work to add Māori names to the Road Name Register in a way that is meaningful for mana whenua.

### ***Sustainability***

There are no implications for sustainability.

### ***LTP/Annual Plan / Financial Strategy /Infrastructure Strategy***

There are no implications for the 10 year plan.

### ***Financial considerations***

There are no financial implications.

### ***Significance***

The significance of this decision is considered low in terms of the Council's Significance and Engagement Policy.

### ***Engagement – external***

There has been engagement with the developers/surveyors and with 'Tēnei te Ruru Ltd' for the botanical name proposed.

### ***Engagement - internal***

There has been engagement within the Transport Group, with Māori Partnerships and Business Information Services.



**SUMMARY OF CONSIDERATIONS**

***Risks: Legal / Health and Safety etc.***

There are no known risks.

***Conflict of Interest***

There are no known conflicts of interest.

***Community Boards***

Support from the Mosgiel Taieri Community Board is being sought.

**Dunedin City Council proposed road name assessment**  
**Assessment for a private way at 80 School Road South Taieri**

Proposed road name	Wilden Lane' (Preferred option for stage 2)	
Description	'Wilden' is connected to the history of a farming community and region in West Otago, where a farmer associated with Mosgiel played a significant role	
Road Naming Policy criteria	Complies	Transport comment
New road names shall not be the same as, or similar to, existing road names within the city	Yes	'Wilden' is not the same as, or similar to any other road names in Dunedin
Roads are to have only one name	Yes	'Wilden' complies. The road has no other name
Roads names must be spelled correctly, interpreted correctly, and not be offensive. Names must reflect historical, geographical or cultural significance associated with the area, a common or established theme in the area or the name of a noteworthy person	Yes	'Wilden' holds personal significance for the developer's family, who have a farming background. According to the developer, the proposed name honours the pioneering history and development of a farming community in the Otago area, often referred as the 'Wilden Area'. One of the project's pioneers is retired farmer Bill Gibson, who now resides in Mosgiel. 'Wilden Estate' originated as a subdivision of the extensive Moa Flat Station in the early 1900s. Between 2013 and 2017, research was conducted into the history of this land, resulting in the publication of the book 'Wilden - The Story of the West Otago Farming Community', which is held by the University of Otago's Hocken Collection
Roads should not be named after any commercial organisation or any living or recently deceased person	No	'Wilden' coincides with the name of a commercial farm in the Otago region names as 'Wilden Station' and known for its sheep and cattle, which in turn was also named after the land's history. Due to existence of a current commercial association, the name does not meet the Road Naming Policy (Clause 4.4)
Road names must not be anagrams, amalgamations or derivatives of people's names	Yes	'Wilden' is not an anagram or amalgamation or derivative of people's names
Names should be 15 characters or less including spaces but excluding suffix	Yes	'Wilden' is 6 characters excluding the suffix
Short names should be proposed for short streets for mapping purposes	N/A	N/A
Road name suffix	Yes	Applicant proposes 'Lane' as the potential suffix  The Road Naming Policy defines 'Lane' as a "A narrow way, path, country road or street. A narrow passage between hedges or buildings"  Staff considers 'Lane' to be an appropriate suffix for the road
Community Board	Yes	Support from the Mosgiel-Taieri Community Board is sought for the name proposed for this subdivision

Consultation	Yes	Applicant has advised that the naming of this road will not affect residents nearby
Overall assessment	'Wilden Lane' does not fully comply with the Road Naming Policy but due to its historical background, it may still be supported by the Community Board and the Committee.	

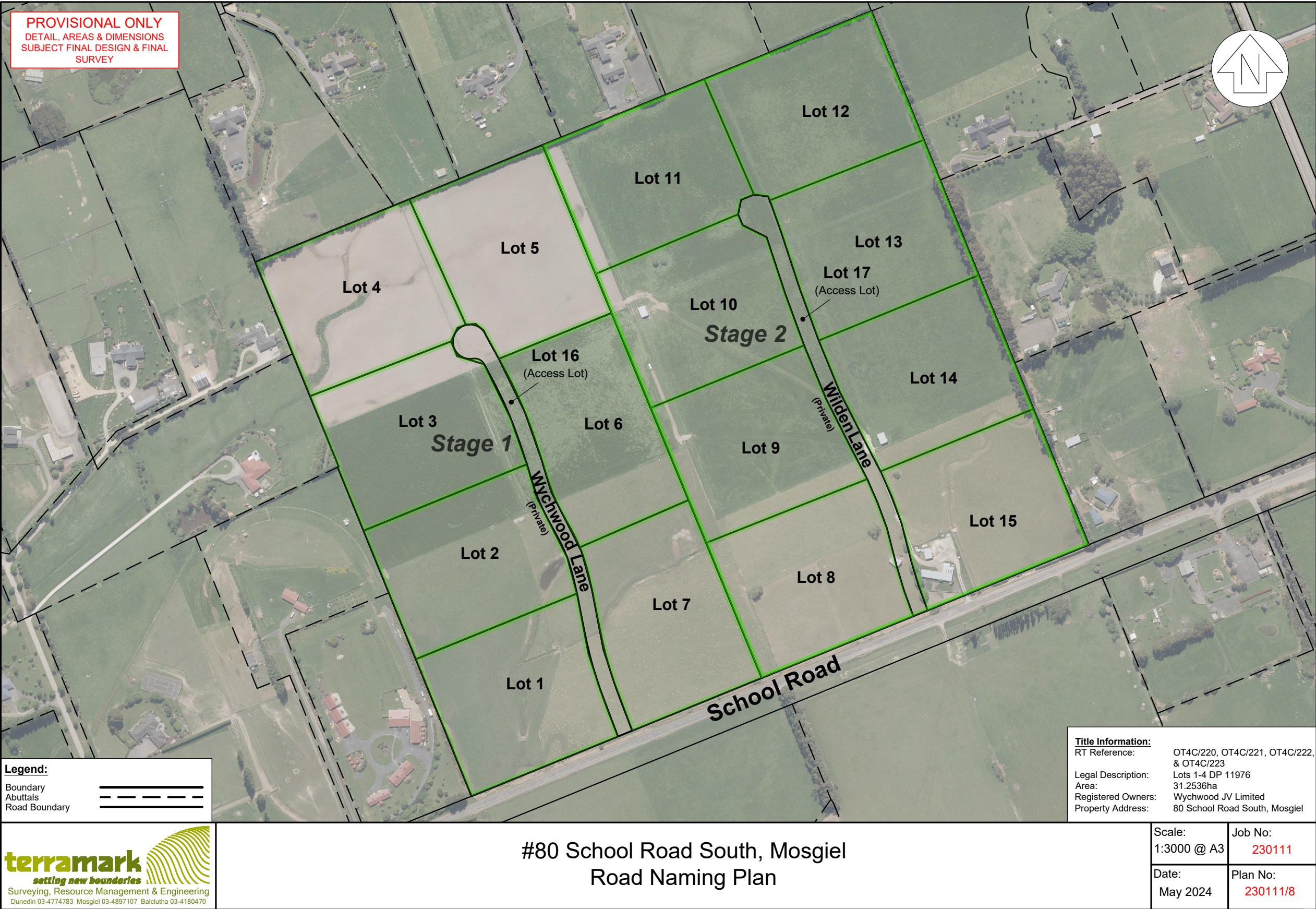
**Dunedin City Council proposed road name assessment**  
**Assessment for a private way at 80 School Road South Taieri**

Proposed road name	'Wantwood Lane' (Alternative option for stage 2)	
Description	Wantwood is associated with the name of a historical farm located within the Waimea Valley	
Road Naming Policy criteria	Complies	Transport comment
New road names shall not be the same as, or similar to, existing road names within the city	Yes	'Wantwood' is not the same as any other road name in Dunedin. However, the Mosgiel Taieri Community Board and the Infrastructure Services Committee expressed concern the name was too similar to 'Wychwood' which was approved as a name for a nearby road in February 2024
Roads are to have only one name	Yes	'Wantwood' complies. The road has no other name
Roads names must be spelled correctly, interpreted correctly, and not be offensive. Names must reflect historical, geographical or cultural significance associated with the area, a common or established theme in the area or the name of a noteworthy person	Yes	'Wantwood Station' was the name of a farm located within the Waimea Valley and is also associated to the Otago region through the New Zealand Agricultural Company and specifically through its former Directors, William Larnach, Robert Stout and Julius Vogel who were among prominent Otago Settlers
Roads should not be named after any commercial organisation or any living or recently deceased person	Yes	'Wantwood' is not a commercial organisation or the name of any living or recently deceased person
Road names must not be anagrams, amalgamations or derivatives of people's names	Yes	'Wantwood' is not an anagram or amalgamation or derivative of people's names
Names should be 15 characters or less including spaces but excluding suffix	Yes	'Wantwood' is 8 characters excluding the suffix
Short names should be proposed for short streets for mapping purposes	N/A	N/A
Road name suffix	Yes	Applicant proposes 'Lane' as the potential suffix  The Road Naming Policy defines 'Lane' as a "A narrow way, path, country road or street. A narrow passage between hedges or buildings"  Staff considers 'Lane' to be an appropriate suffix for the road
Community Board	Yes	Support from the Mosgiel-Taieri Community Board is sought for the name proposed for this subdivision
Consultation	Yes	Applicant has advised that the naming of this road will not affect residents nearby
Overall assessment	'Wantwood Lane' complies with the Road Naming Policy	















**Dunedin City Council proposed road name assessment**  
**Assessment for a private way at 267 Gladstone Road North**

Proposed road name	Cottage Lane (Preferred option)	
Description	The name refers to the most significant building on the property being developed and has connection with the historical use of the land	
Road Naming Policy criteria	Complies	Transport comment
New road names shall not be the same as, or similar to, existing road names within the city	No	'Cottage' is similar but not identical to another private road named 'Old Cottage Lane' within Dunedin, on Blueskin Road, Waitati. Following recent discussions with Land Information New Zealand, staff do not anticipate confusion due to the name not being identical and the two roads being over 25 km apart, meeting the essential requirement for addressing purposes. Nevertheless, staff recommend changing the suffix to ensure clear distinction between the two names
Roads are to have only one name	Yes	'Cottage' complies. The road has no other name
Roads names must be spelled correctly, interpreted correctly, and not be offensive. Names must reflect historical, geographical or cultural significance associated with the area, a common or established theme in the area or the name of a noteworthy person	Yes	The name refers to a cottage originally built around 1907, which still stands near the access road to the property. According to the developer, it also alludes to the style of the houses being constructed on the land (8 out of 9 houses are "cottage style")
Roads should not be named after any commercial organisation or any living or recently deceased person	Yes	The name 'Cottage' does not relate to any commercial organisation, or any living or recently deceased person
Road names must not be anagrams, amalgamations or derivatives of people's names	Yes	'Cottage' is not an anagram, amalgamation or derivative of people's names
Names should be 15 characters or less including spaces but excluding suffix	Yes	'Cottage' is 7 characters excluding the suffix
Short names should be proposed for short streets for mapping purposes	N/A	N/A
Road name suffix	Yes	Applicant proposes 'Lane' as the potential suffix, but staff recommend changing the road type to 'Drive' for the reasons stated above  The Road Naming Policy defines 'Drive' as "An especially scenic road or street. A main connecting route in a subdivision or suburb"  Staff considers 'Drive' to be an appropriate suffix for the road
Community Board	Yes	Support from the Mosgiel-Taieri Community Board is sought for the name proposed for this subdivision

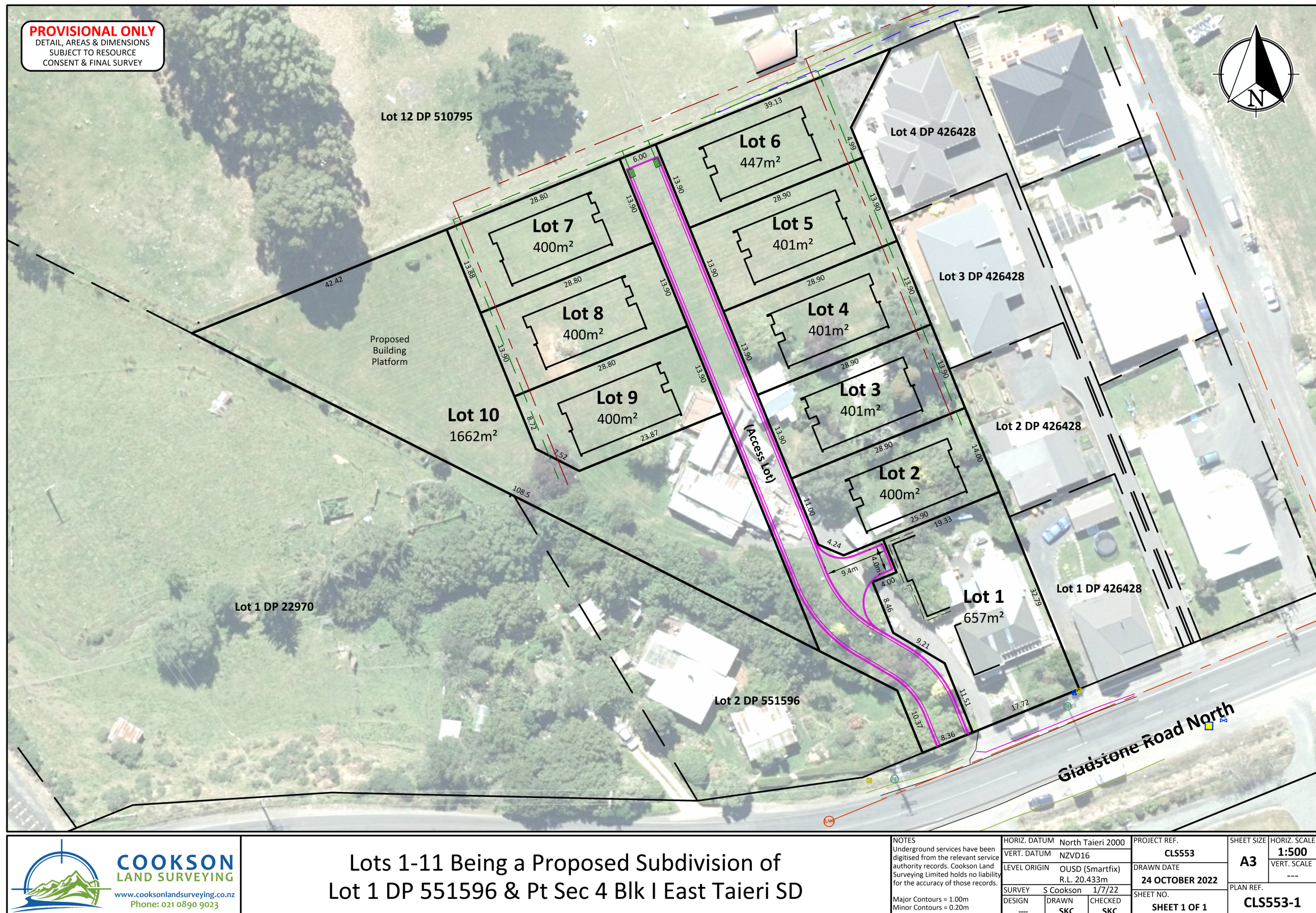
Consultation	Yes	Applicant has advised that the naming of this road will not affect residents nearby
Overall assessment	'Cottage Lane' does not fully comply with the Road Naming Policy and staff recommend the use of 'Cottage Drive'	

**Dunedin City Council proposed road name assessment**  
**Assessment for a private way at 267 Gladstone Road North**

Proposed road name	Stables Lane (Alternative option)	
Description	The name refers to the original use of the land in the development, which housed jockeys who trained horses on the property	
Road Naming Policy criteria	Complies	Transport comment
New road names shall not be the same as, or similar to, existing road names within the city	Yes	'Stables' is not the same as, or similar to, any other road names in Dunedin
Roads are to have only one name	Yes	'Stables' complies. The road has no other name
Roads names must be spelled correctly, interpreted correctly, and not be offensive. Names must reflect historical, geographical or cultural significance associated with the area, a common or established theme in the area or the name of a noteworthy person	Yes	The name refers to the historical use of the land, which housed jockeys who trained horses on the property
Roads should not be named after any commercial organisation or any living or recently deceased person	Yes	The name 'Stables' does not relate to any commercial organisation, or any living or recently deceased person
Road names must not be anagrams, amalgamations or derivatives of people's names	Yes	'Stables' is not an anagram, amalgamation or derivative of people's names
Names should be 15 characters or less including spaces but excluding suffix	Yes	'Stables' is 7 characters excluding the suffix
Short names should be proposed for short streets for mapping purposes	N/A	N/A
Road name suffix	Yes	Applicant proposes 'Lane' as the potential suffix  The Road Naming Policy defines 'Lane' as a "A narrow way, path, country road or street. A narrow passage between hedges or buildings"  Staff considers 'Lane' to be an appropriate suffix for the road
Community Board	Yes	Support from the Mosgiel-Taieri Community Board is sought for the name proposed for this subdivision
Consultation	Yes	Applicant has advised that the naming of this road will not affect residents nearby
Overall assessment	'Stables Lane' complies with the Road Naming Policy	











**Dunedin City Council proposed road name assessment**
**Assessment for a private way at 4, 6 and 8 Lorne Street, Mosgiel**

Proposed road name	Mako Lane' (Preferred option-Not alternative option presented)	
Description	'Mako' refers to a type of native New Zealand flora. The name was approved in 2017 by the Infrastructure Services and Networks Committee to become part of the Road Name Register	
Road Naming Policy criteria	Complies	Transport comment
New road names shall not be the same as, or similar to, existing road names within the city	Yes	'Mako' is not the same as, or similar to any other road names in Dunedin
Roads are to have only one name	Yes	'Mako' complies. The road has no other name
Roads names must be spelled correctly, interpreted correctly, and not be offensive. Names must reflect historical, geographical or cultural significance associated with the area, a common or established theme in the area or the name of a noteworthy person	Yes	'Mako' or 'Makomako', scientifically known as 'Aristotelia serrata', is a small tree native to Aotearoa. Early settlers referred to it as 'wineberry' or 'New Zealand currant'. This tree typically reaches heights of up to 9 meters and is widespread across the country. In early summer, it produces flowers that are succeeded by berries ranging in colour from white to pink, red, and black
Roads should not be named after any commercial organisation or any living or recently deceased person	Yes	'Mako' is not named after any commercial organisation or any living or recently deceased person
Road names must not be anagrams, amalgamations or derivatives of people's names	Yes	'Mako' is not an anagram or amalgamation or derivative of people's names
Names should be 15 characters or less including spaces but excluding suffix	Yes	'Mako' is 4 characters excluding the suffix
Short names should be proposed for short streets for mapping purposes	N/A	N/A
Road name suffix	Yes	Applicant proposes 'Lane' as the potential suffix  The Road Naming Policy defines 'Lane' as a "A narrow way, path, country road or street. A narrow passage between hedges or buildings"  Staff considers 'Lane' to be an appropriate suffix for the road
Community Board	Yes	Support from the Mosgiel-Taieri Community Board is sought for the name proposed for this subdivision
Consultation	Yes	Applicant has advised that the naming of this road will not affect residents nearby
Overall assessment	'Mako Lane' complies with the Road Naming Policy	



## **Makomako (Wineberry)** ***Aristotelia serrata* & *A. fruticosa***

Indigenous to Aotearoa, Makomako belongs to the Elaeocarpaceae family. It is also known as mako and the names given to this tree, by the early settlers is wine berry or New Zealand currant.

*(Makomako seedlings - Cookson Kauri walk, Kauaeranga Valley: Melissa Hutchison)*

### **Identification & Cultivation:**

Makomako (*Aristotelia serrata*) is a small tree, growing up to 9 meters tall, though often is shrub-like; it is commonly found throughout the country, it can be frost tender when young; and in cooler areas, be semi-deciduous in winter. It thrives in the margins of the bush and along streams and rivers and is an early growth plant on land that which has been disturbed and can be planted intentionally to provide beauty, food and medicine.

The foliage is a bright green, ovate-cordate and serrated around the edges, with reddish petioles and some veining. It has a flush of flowers from spring to early summer; opening pale and darkening with age. The trees are dioecious (male and female on different plants). If there's a male in the area, to pollinate, the berries will develop and ripen, varying in colour from red to black, forming in clusters.



*Aristotelia fruticosa* is known as the 'Mountain wineberry'; described as "A small-leaved shrub



*(Makomako flowers - Christchurch: Melissa Hutchison)*

with hairy branchlets and veins evident on the underside of leaves. Up to 2 metres, it's found throughout Aotearoa mainly at higher altitudes; in shrubby bush and in sub-alpine forests. It flowers in early summer, around October to December, in similar colours to *A. serrata*, followed by berries which can vary in colour from white to pink to bright pinky-red to black.

The species name *Aristotelia* is named to commemorate the great Greek, Aristotle; serrata = serrated and fruticosa = shrubby.

**Parts used:** Leaves bark and fruit; from the chapter from 'Treasures From Tane' about this tree is titled 'Makomako for welfare, weapons, wood and wine' comes the following quote:

*"It is hard to believe that one common native plant could produce such a diverse range of goods: lightweight bird spears, net floats, soothing medications to treat sore eyes, burns or rheumatism; jams, jellies; a first rate wine, and even gunpowder".*

**Constituents:** There has been little assessment of the constituents of makomako, it is known though, that the bark contains  $\beta$ -sitosterol, tannins and ellagic acid; Leaves contain the indole alkaloids, aristoteline, aristotelinone, serratoline, and serratolenone, peduncularine and others unique to the species;



Fruit anthocyanins, phenolic acids, flavonoids, and what is it that makes the seeds bitter??? One day we will know more about this wonderful plant.

**Therapeutic Actions:** Astringent, antifebrile, antirheumatic, anti-inflammatory and antiseptic.

**Medicinal uses:** This is an important Rongoa herb; traditionally, it was used for treating burns;

For boils and ulcers (poultice). As both an internal and topical treatment for painful rheumatism; Leaves were steeped in hot baths for arthritis and rheumatism and infusions from the bark and leaves were used to treat a burn, boils, sore eyes and rheumatic pains. Makomako can be used as a general tonic for skin problems.

**Dosage:** Take infusions of the bark and leaves are required; a recommended daily dose is not known, nor the dose of a tincture of makomako. Eat the flesh of the berries, but discard the seeds. Prepare an infusion or decoction to take internally or as a poultice externally for both osteoarthritis or rheumatoid arthritis, or for an aching body. Traditionally the leaves were steeped in hot baths for these same conditions.



(Makomako berries-Karori, Wellington: Tony Wills)



(Makomako berries-Karori, Wellington: Tony Wills)

**Culinary uses:** The berries of Makomako are much loved by both tuis and kereru, as well as the leaves, humans like the, too; the flesh and juice are quite palatable, the berries though, are bitter, so discard them. They provided a seasonal feast for the Maori and to the early Pakeha settlers; who quickly learnt how to use them; apart from eating them, making preserves and wine, hence its common name! Possums are partial to the berries and leaves.

**Other Uses:** From the bark, when removed and 'bruised', blue-black dye is obtained; this can utilised for dyeing flax, mats and fabrics. The timber is light-weight and soft, so was valued for carving out to make bowls and the saplings were used to make stilts. The timber is brittle, so not useful for 'load bearing'.

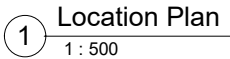
**History & Mystery:** Makomako is a plant which is treasured by the Maori people; as both a food, medicine and a dye source. Traditionally either the leaves of the bark were prepared to be used as a wash, bath or poultice. This was considered to be a very effective treatment for burns.

References: 'Maori Healing and Herbal' by Murdoch Riley; 'Treasures from Tane' by Rob Tipa; <https://www.nzpcn.org.nz/flora/species/aristotelia-fruticosa/> & Phil Rasmussen, Phytomed.

Prepared for the Herb Federation of New Zealand's Herb Awareness Month 2021. Enquiries: [www.herbs.org.nz](http://www.herbs.org.nz)

**Advisory Note:** This text is given as a general guidance. If any adverse reactions occur or symptoms persist, please contact a qualified medical herbalist or medical doctor immediately.





2/06/2023 2:06:52 pm C:\Users\m.phillips\OneDrive - South by Southeast Ltd\Documents\223000.03 KO Lorne Street\_C22\_m.phillipsD3VMV.rvt

Consultants	
Survey	- Maven
Geotechnical	- -
Planning	- -
Structure & Civil	- -
Services	- -
Fire	- -
Landscape	- Greenwood

Revisions		Date
B	BUILDING CONSENT	06/06/2023
A	50% DETAILED DESIGN WIP	08/05/2023

DO NOT SCALE DRAWINGS. Contractor must verify all dimensions on site before commencing any work. Architect to be notified immediately of any discrepancy. All work shown to be carried out in accordance with the Building Act 2004, all statutory and regulatory authorities and Building Consent Authority approved Consents.

Date  
06/06/2023  
08/05/2023

Client  
Kāinga Ora

Project  
**Lorne Street Development**  
Address 4-8 Lorne St  
Mosgiel  
Dunedin

**SOUTH by SOUTHEAST**  
Architects

Address  
Level 2, 151 Cambridge Terrace, Christchurch 8013, New Zealand

Drawing Title  
LOCATION PLAN

Project Stage  
**BUILDING CONSENT**  
Drawing Scale 1 : 500 @ A1

Drawing No  
A-03

Project No	223000.03
Issue Date	08/05/2023
Drawn By	Author
Checked By	Checker

Revisor  
B



## PROJECT FUND

Department: Civic

### EXECUTIVE SUMMARY

- 1 A funding application has been received from the Mosgiel Taieri Community Patrol fir \$2,000 towards costs associated with running the patrol.
- 2 As this is an administrative report the Summary of Considerations is not required.

### RECOMMENDATIONS

That the Board:

- a) **Approves/Declines** the funding application from the Mosgiel Taieri Community Patrol.

### Signatories

Author:	Jennifer Lapham - Governance Support Officer
Authoriser:	Clare Sullivan - Manager Governance

### Attachments

	Title	Page
<a href="#">↓A</a>	Funding Application - Mosgiel Taieri Community Patrol	42

### Application for Funding from the Mosgiel-Taieri Community Board

Name of group applying for funds: MOSGIEL TAIERI COMMUNITY BOARD

Contact name: DAVE MITCHELL

Contact Phone Number: [REDACTED]

Address: [REDACTED]

Post Code 9024

Position held: CHAIR

Has your group made an application to the Board for funding support within the last five years? Yes ☒ No ☐

If granted, how much was granted, and what was that money used for? \$873 - WATERLOO CLOTHING.

Short description of present project:

FUEL COSTS FOR 2024/25 \$2000

VEHICLE MAINTENANCE COSTS. \$ 950

INSURANCE \$ 820

Please attach any additional information which may be useful in explaining the project.

Total cost of project: \$3 770

Please attach any quotations for work or products that you may have received.

Amount sought from Mosgiel Taieri Community Board: \$ 2000

Amount sought from any other Dunedin City Council source: \$ -

How will the rest of the project cost be covered? DONATIONS / FUNDRAISING.

(Applicants must contribute not less than 30% of the total cost.)

What is the timeframe for completing the project? 2024/25

Is the project a one-off /annual/ biennial /other event? If other, please detail:

ANNUAL COST.

Detail the benefits to your organisation and/or the wider community which will result from this project:

COMMUNITY PARTIAL - ASSISTING POLICE

CIVIL DEFENCE EMERGENCY RESPONSE

**Applicants are encouraged to attend the Community Board meeting to speak to their application and answer any questions the Board may have.**

**If you would like to do so, please contact the Governance Support Office Dunedin City Council 477 4000. Email: [governance.support@dcc.govt.nz](mailto:governance.support@dcc.govt.nz) Or contact Andrew Simms (Board Chairperson) Telephone 027 434 6394**

*Any funds approved **MUST** be paid directly into the organisation's bank account. Please supply a copy of the bank account name and number separately.*

*Please return your completed application to:*

Governance Support Officer  
Mosgiel-Taieri Community Board  
PO Box 5045  
Moray Place  
Dunedin 9058



***GUIDELINES FOR ALLOCATIONS FROM THE BOARD'S DISCRETIONARY FUND***

Each of Dunedin's six Community Boards has a discretionary fund of \$10,000 per annum, funded from the General Rate. The original intent of this funding was to allow Community Boards to undertake projects or activities within their own area.

However, the Board will give consideration to allocating grants to groups or organisations that apply for funding for community based projects. The Board will make allocations from its fund based on the priorities set in its Community Plan, and may make allocations in accordance with the following criteria:

**Category A: Community Grants**

The Board will allocate funding twice a year with applications closing on 31 July and 31 January.

Non-profit making groups and/or organisations may apply for funding based on the following criteria:

- Applications must be made on the Application for Funding Form and must include other organisations that have been applied to for funding.
- Applications must be received in time to be included on the agenda for the meeting at which the application is being considered.
- Applicants may speak to their application in the public forum of the meeting at which the application is being considered
- Priority will be given to applications that can demonstrate a benefit to the wider community
- The project must be completed within 12 months of the grant being received, if the project is not completed the funding must be returned or another application made or an update provided to the Board.
- An organisation may not apply for more than one grant per financial year.
- At the conclusion of the project, the group must report back to the Board on how the grant was spent.
- Priority will be given to Community Development Projects and Events.
- The section in the application form regarding making an application to the Board within the last five years must be completed.

**Category B: Board Initiated Projects/Activities**

The Board may also use the Project Fund to undertake community projects or activities such as beautification projects, festivals, decorations, newsletters etc.

Allocation of the Project Fund will be supported by a formal resolution of the Board.



<b>MOSGIEL-TAIERI COMMUNITY PATROL</b>									
<b>Vehicle Expenses</b>									
	2020	2021	2022	2023	2024	<b>Average</b>			
Fuel	2349	1537	1970	2338	1612				1961
Servicing (Reg., WoF, R. & M.)	658	760	1256	585	1455				942
Insurance (Incl. equipment less 50% vehicle discount)	663	633	850	880	948				794
	<b>3670</b>	<b>2930</b>	<b>4076</b>	<b>3803</b>	<b>4015</b>				<b>3697</b>
Vehicle expenses as % of total expenses	44	39	52	46	62				48

Pre-loaded?  
fuel card?

Liability insurance

## **Attached to Application for Funding from the Mosgiel-Taieri Community Board**

**11 October 2023**

### **Background Information**

Community Patrols of New Zealand (CPNZ) is a national organisation that was formed in 2002. CPNZ is funded at a National level by New Zealand Police and New Zealand Government, with the CPNZ National Office being based at Police National Headquarters in the National Prevention Centre. The CPNZ National Office supports over 4,000 volunteers in over 150 affiliated Community Patrols throughout New Zealand.

Community Patrols are organised and operated by their local communities and raise their annual operating expenses through local grants, sponsorship and donations. Each Patrol caters to the needs of its local community, patrolling where and when it can best support the local Police and the local community.

In partnership with others, we prevent crime and reduce harm through the active presence of trained patrollers. CPNZ's vision is a New Zealand where everyone feels safe and therefore our volunteers work closely with Police as extra "eyes and ears" through intelligence and observation to assist Police and other agencies to build safer communities.

We are also part of the Emergency Response Group and assist in cases of flooding, fires and earthquakes.

### **How will the rest of the project cost be covered?**

Sponsorships, donations plus proceeds from raffles, quiz nights and BBQ's

### **Detail the benefits to your organisation and/or the wider community which will result from this project:**

Our organisation would benefit from a reduction in the time spent by our volunteer members on our present fundraising activities which are frequently labour and time consuming.

Members join primarily to contribute as active patrollers and many do not have sufficient time available to commit to fund raising as well.

The wider community would continue to benefit from the services provided by the patrol operations.

## **GOVERNANCE SUPPORT OFFICER'S REPORT**

Department: Civic

---

### **EXECUTIVE SUMMARY**

- 1 This report is to inform the Mosgiel-Taieri Community Board on activities relevant to the Board's area including:
  - a) Project Fund
  - b) Submission to the Dunedin City Council Draft Annual Plan 2024-2025
  - c) Submission to the Otago Regional Council Draft Long Term Plan 2024-2034
  - d) New Zealand Community Boards' 2024 Conference
  - e) Dunedin Fire Brigade Restoration Society
  - f) Roadworks Schedule
  - g) Dunedin City Council Updates

### **RECOMMENDATIONS**

That the Board:

- a) **Notes** the Governance Support Officer's Report.
- b) **Ratifies** the submission to the Dunedin City Council draft Annual Plan 2024-25.
- c) **Ratifies** the submission to the Otago Regional Council draft Long Term Plan 2024-24
- d) **Considers** nominating a Board Member as the community representative to attend the 2024 New Zealand Community Boards' Conference
- e) **Considers** providing a letter of support for the Dunedin Fire Brigade Restoration Society.

### **ITEMS FOR DISCUSSION**

**Project Fund**

- 2 The Board has \$2,505.02 remaining to be allocated for the 2023/24 Financial year. To date the following has been spent.

Meeting Date	Amount (excl. GST)	Recipient
29 June 2023	\$313.04	Hire Coronation Hall for Public meeting
9 August 2023	\$1,000.00	Rotary Club of Mosgiel – planter boxes
	\$850.00	Festival of the Plain Inc – Christmas Family Night
20 September 2023	\$710.00	Ian Chalmers (I.C. Enterprises)
8 November 2023	\$1,500.00	Taieri Historical Society – Information Signs
	\$767.41	Update Board Information and participation in Taieri A & P show
8 February 2024	\$50.00	Participation in Party in the Park
	\$84.53	Update Library Information Board
	\$220.00	“Round the Board” OAR radio programme
17 April 2024	\$2,000.00	Taieri Network Trails Trust
<b>Total</b>	<b>\$7,494.98</b>	

#### **Dunedin City Council Draft Annual Plan 2024-2025**

- 3 As agreed at the Board’s April 2024 meeting, a draft submission was prepared and submitted on the DCC’s draft Annual Plan. This submission now needs to be formally ratified (Attachment A).

#### **Otago Regional Council Draft Long Term Plan**

- 4 As agreed at the Board’s April 2024 meeting, a draft submission was prepared and submitted on the ORC’s draft Long Term Plan. This submission now needs to be formally ratified (Attachment B).

#### **New Zealand Community Boards’ Conference Attendance**

- 5 The 2024 New Zealand Community Board Conference is being held at the Tākina Wellington Convention & Exhibition Centre from 21 – 23 August 2024. Early bird registrations (\$895.00 excluding GST) close on 12 July 2024 and standard registrations (\$995.00 excluding GST) are available following that. The Council’s policy on attendance at this conference is as follows:
- a) Council will cover the accommodation, travel and registration costs for one Community Board member (per Community Board) to attend the biennial Community Boards Conference when it is held in the South Island, and two Community Board members IN TOTAL to attend the conference when it is held in the North Island.
  - b) Individual Community Boards are responsible for covering the costs of any additional delegates they wish to send to the Conference over and above the representatives for whom costs will be met by the Council.
- 6 If the Board wishes to nominate a member to go into the draw for one of the two Council-funded places, please advise Clare Sullivan of the name by 21 June 2024. Any additional members that the Board wishes to attend (or those unsuccessful in the draw) can be paid for from the Board’s Project Fund.

**Dunedin Fire Brigade Restoration Society**

- 7 The Chairperson has received a request from the Dunedin Fire Brigade Restoration Society for support to establish a Fire Brigade Exhibition Hall at the Taieri Aerodrome in conjunction with the Taieri Aero Club.
- 8 A draft letter of support is attached as Appendix C for the Board's consideration.

**Roadworks Schedule**

- 9 Information on current notified road closures and the roadworks schedule (a weekly list of programmed works) for Council's maintained roads is available on the DCC website via these links: <https://www.dunedin.govt.nz/news-and-events/public-notice/roadworks-schedule> and <https://www.dunedin.govt.nz/news-and-events/public-notice/notified-road-closures>.

**Currently Consulting On**

- 10 For the most up to date information on what DCC is consulting on, please visit <https://www.dunedin.govt.nz/council/currently-consulting-on>

**Dunedin City Council Updates**

- 11 Board or members of the public wishing to advise Council of any operational issues or concerns, e.g., potholes, vegetation, burst pipes are reminded to contact the Dunedin City Council Customer Services Agency on 03 477 4000 or email [dcc@dcc.govt.nz](mailto:dcc@dcc.govt.nz). For any non-urgent matter please contact council via the online "Fix it form" <https://www.dunedin.govt.nz/do-it-online/report/fix-it-form>
- 12 If issues and concerns are not dealt with in a timely manner, Board Members should contact the Governance Support Officer, or the Senior Staff Member appointed to the Board.

**Signatories**

Author:	Jennifer Lapham - Governance Support Officer
Authoriser:	Sharon Bodeker - Special Projects Manager

**Attachments**

	Title	Page
<a href="#">A</a>	Dunedin City Council Draft Annual Plan 2024-2025 Submission	50
<a href="#">B</a>	Otago Regional Council Draft Long Term Plan Submission	68
<a href="#">C</a>	Draft Letter of Support Dunedin Fire Brigade Restoration Society	72



**MOSGIEL-TAIERI  
COMMUNITY BOARD**

50 The Octagon | Dunedin 9015 | PO Box 5045 | Dunedin 9058 | New Zealand  
E [dcc@dcc.govt.nz](mailto:dcc@dcc.govt.nz) P +64 3 477 4000 [www.dunedin.govt.nz](http://www.dunedin.govt.nz)

**DCC Annual Plan Submission 2024**

April 2024

**Tena Koutou,**

The Mosgiel Taieri Community Board welcomes this opportunity to make this submission to the DCC Annual Plan for 2024. We attach our Community Plan for 2024 and ask for your support in several areas to help us achieve the outcomes identified as priorities for our community.

**Priority 1 – Heavy Transport By-Pass for Mosgiel/Second entrance from SH1 into Mosgiel.**

The need for a Heavy Transport By-Pass for Mosgiel has been recognised by the community and the council for many years. The continued growth of the Taieri, both residential growth and industrial growth, means that the need is ever increasing. Currently there are 540 heavy truck movements through the main street of Mosgiel every day.

**What help we need from Council.**

- Advocacy with LTSA / RLTC to have the feasibility study completed without delay.
- Support for fast-tracking the by-pass as part of the inland port proposal.

**Priority 2 – Flood protection for the Taieri.**

Many of our communities on the Taieri are vulnerable to flooding. The Taieri remains the fastest growing area of Dunedin City with new subdivisions, retirement villages, rural development, and industrial factories planned or consented. The importance of the communities, the farms, the airport, the industry on the Taieri to all of Dunedin is evident. But the Taieri is a low-lying flood plain that relies on man-made interventions to realise its value and potential for Dunedin.

**What help we need from Council.**

- The stormwater systems in Mosgiel need to be maintained and upgraded by the DCC to efficiently deliver stormwater to the drains and watercourses that serve Mosgiel. This includes the maintenance and upgrade of the stormwater assets that serve the Gordon Road retail area, and the planned upgrades of the pumps at Reid Avenue and Centre Street.
- DCC advocacy to the ORC to ensure that all flood protection assets on the Taieri are maintained to at least 100% of their design capacity, in particular the flood banks protecting Outram, the flood banks protecting the Airport, and the capacity restoration of the Silverstream, Owhiro and Mill Creek waterways.

**Priority 3 – Cycleways / Walkways onto and across the Taieri**

Dunedin could be the hub of a rapidly emerging and lucrative network of recreational and tourist trails across Otago. Shared paths onto and across the Taieri will also provide an invaluable recreational and commuting asset for our communities. The Mosgiel Taieri Community Board has identified four immediate priorities:

1. Stage One of the Tunnel trail from Mosgiel to Green Island. (some work commenced by DCC)
2. Stage One of the Taieri Trail from Mosgiel to Outram. (feasibility study complete)
3. The extension of the Otago Central rail trail through to the Taieri (economic benefit study complete / feasibility study imminent)
4. Outram Loop Track. (community project across DCC reserve)

**What help we need from Council.**

- Continued advocacy and support with funding, enabling works, land access for all proposed trails.

- Full consideration of the economic and social benefits provided by an extension of the Otago Central Rail Trail through to Dunedin.

**Priority 4. Memorial Park Destination Playground**

Memorial Park is one of three Destination Playgrounds identified for redevelopment. The MTCB supports the initial concept plan renders and in particular the inclusion of a substantial skate bowl and skate park as a vital component. The MTCB acknowledges the positive impact on our community offered by the recent opening of Te Puna o Whakaehu and the soon to be commissioned pump track at Seddon Park, and thanks the DCC for these facilities, on behalf of our community. The redevelopment of the Memorial Park Playground with the inclusion of the skate bowl is the third vital component to cater for our young children right through to young adults on the Taieri. These improvements are especially important as we see more infill housing and higher density social housing within the same precinct.

**What we need from Council.**

- Keep up the great work at Parks and Recreation.
- Keep up the great communication and consultation with the Board and the community on this project, towards the final design.

**Priority 5. The redevelopment of Outram Glen**

Council have voted to commence the redevelopment of Outram Glen, scheduled for Spring 2024. Thank you so much as this is a beautiful asset for all of Dunedin.

**What we need from Council.**

- Please consult with the Board regarding the final designs and inclusions. There are some important considerations including security and accessibility to the river beach.

**Priority 6. The extension of the Otago Central Rail Trail through to the Taieri and Dunedin.**

The future of the Taieri Gorge Railway has been set aside for another year pending a full and independent review of the rail operation and any alternatives. The Mosgiel Taieri Community Board has a view that the Taieri community and the Dunedin community might be better served by an extension of the highly successful Otago Central Rail Trail through to Dunedin. The Board will support the option of a cycle trail during the review process. The Board will soon present the feasibility study for the establishment of a walking and cycleway including full costings, to be read alongside the economic benefit study already to hand.

**What we need from Council.**

- Your careful consideration of all aspects of this review and decision.

**Priority 7. Pedestrian and Road Safety for Mosgiel and Outram.**

The Board has identified several specific areas of concern, including speed limit changes included in the DSMP which have been set aside, but which are necessary to address legitimate road safety concerns. We will write separately to DCC Transport for assistance.

**What we need from Council.**

- Further attention from staff and councillors to legitimate safety concerns including speed limit changes on the Taieri.

**Priority 8. Park and Ride Transport Hub.**

The preamble to this issue is well recognised. The Park and Ride facility for Mosgiel is essential to encourage residents across the Taieri to use public transport to get into Dunedin for work, education and retail. Many smaller communities on the Taieri have no public transport at all, with many elderly people reluctant to drive into Dunedin.

**What we need from Council.**

- Continued advocacy to NZTA/RLTC for this facility.

**Priority 9. Reinstate Dunedin International Flights.**

There is significant community support for international flights to return to Dunedin Airport. With the proposed airport at Tarras faltering and ZQN reaching capacity, does the door open for Dunedin? What are we going to do when thousands of cyclists start arriving from Queenstown via Lawrence and Middelmarsh? If Tarras was an option, why not Dunedin?

**What we need from Council?**

- More confidence that Dunedin could be a greater part of the wider Otago offering.

**Priority 10. Community Information Board**

There are currently two old and unmaintained Community Information Boards in Mosgiel. The MTCB has commenced talking to service groups (who installed the existing boards) about a new board within the Glasgow Street pocket park. This might include commercial sponsorship, or service club sponsorship. The MTCB is confident that this can be done with no council funding.

**What we need from Council.**

- Approval to install.

**Priority 11 and 12. Growth on the Taieri**

These priorities formed the MTCB's submission to the combined DCC/ORC Future Development Strategy in 2024 and are largely included as a matter of record. One aspect not dealt with by the FDS Panel but nevertheless important is the protection of heritage homes and buildings on the Taieri, particularly as many are ripe for in fill housing developments. The current encouragement by council towards in-fill housing (which the MTCB supports) is providing incentive for developers to demolish historic homes throughout Dunedin, many of which lack any heritage protection whatsoever. Yet the Council already has a mechanism to offer some protection with the Register of Historic Structures, which can be used to protect important facades, building envelopes and character, and special character zones throughout Dunedin.

**What we need from Council.**

- Realisation that the incentive to flatten historic homes and buildings throughout Dunedin has been intensified by planning changes and look at what counterbalancing mechanisms can be used to protect our heritage.

Thank you, Councillors and Staff, for your consideration, encouragement and support.

We wish to speak to this submission.

Naku iti noa, na,

Andrew Simms  
Chairperson for the Mosgiel Taieri Community Board.





# Community Plan

2024/2025

APRIL 2024

## Mosgiel Taieri Community Board

Mosgiel Taieri Community Board. Community Plan 2024-2025 – adopted 17 April 2024

SECTION ONE	
Introduction	1
SECTION TWO: KEY INFORMATION	
2.1 Background	2
2.2 Board Members and their Contact Details	3
2.3 Map of Community Board Area	4
2.4 Our Community	4
SECTION THREE: PRIORITIES FOR OUR COMMUNITY	
3.1 Community Board Priorities	6
SECTION FOUR: COMMUNITY BOARD PROPOSED ACTIVITIES	9
SECTION FIVE: PLANS	
5.1 Emergency Plan – Community Board Response Plan	11
5.3 Community Engagement Plan	11
SECTION SIX: COMMUNITY BOARD MEETING SCHEDULE	12

---

## **1 INTRODUCTION**

This Community Board Community Plan summarises the needs and priorities of the communities within the Mosgiel-Taieri Community Board area for the 2024/2025 , and the Dunedin City Council's (DCC) 2025-34 long term plan. Its primary objective is to signal to the DCC those priorities for our community, with the ultimate goal that they are programmed into the DCC's 10-year plan and funded by the DCC. These priorities are shown in section 3 of this plan.

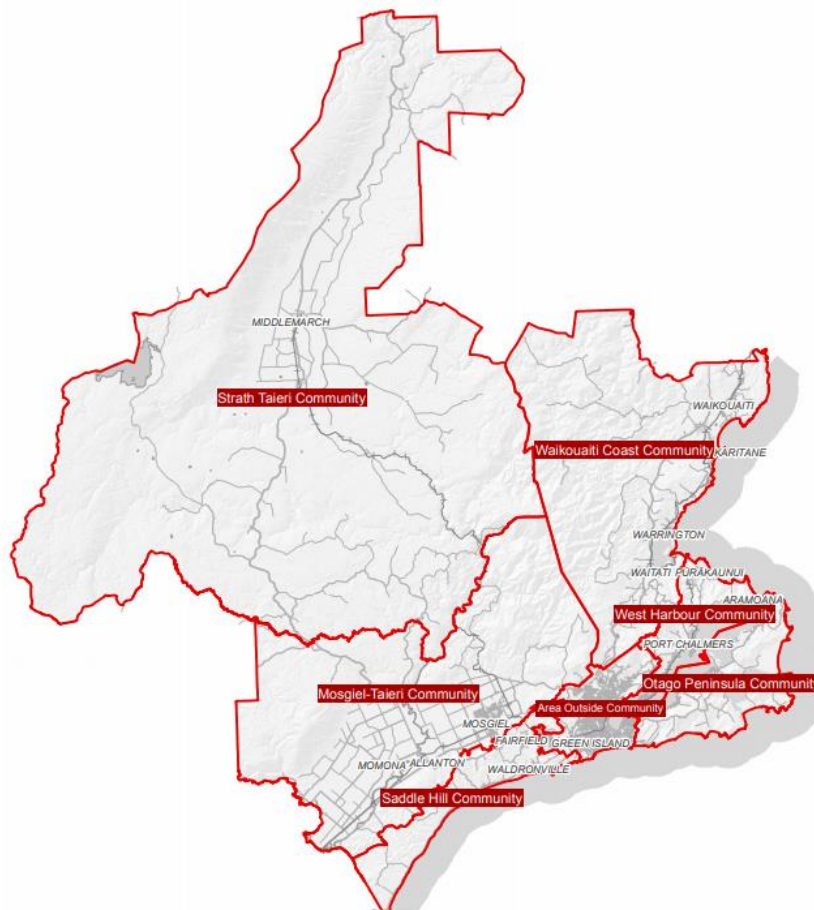
This Plan also includes activities that we, the Community Board plan to undertake. Our most important role is to be an advocate for our community, but we also proactively support our community in other ways, and these are set out in section 4 of this plan.

This Plan is subject to change and revision as needs arise and priorities alter.

## 2 KEY INFORMATION

### 2.1 BACKGROUND

The City of Dunedin has six Community Boards within its boundary, as shown in the map below.



Each Community Board has six elected members, and one councillor representative. The Community Board members are elected every three years as part of the local body elections. Community Boards must comply with the same rules and regulations as council, such as the Local Government Act.

The primary role of a Community Board is one of advocacy for its community. Each Community Board makes representations to the DCC on the priorities those boards have identified for their community area, that they would like to see included and funded in the council's annual plans and 10 year plans.

Any matters of an operational nature, e.g., the reporting of potholes, tree issues etc., are reported to council via the DCC's 477 4000 phone number, and do not form part of the Community Board's priorities.

Each Community Board holds public meetings approximately every 2 months, and these meetings are advertised on the DCC website and in the Otago Daily Times. The meeting schedule for the 2023 calendar year is provided in Section 6 of this plan. The agendas and minutes from those meetings are also available on the DCC website at <https://www.dunedin.govt.nz/council/council-meetings/agendas-and-minutes>

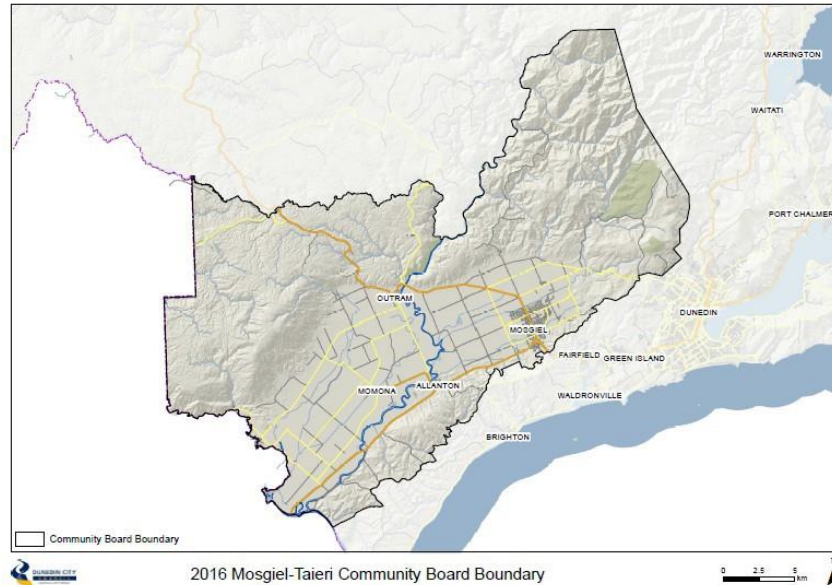
At the start of each meeting, there is a public forum session, which gives anyone from the community the opportunity to present to the board members their views on any topic. Anyone wishing to speak at public forum must make a request to speak at least 24 hours before the day of the meeting. They can do this via the Chair of the Community Board or contact a Governance Support Officer at the DCC at [governance.support@dcc.govt.nz](mailto:governance.support@dcc.govt.nz).

## 2.2 BOARD MEMBERS AND CONTACT DETAILS

Board members for the 2022 – 2025 triennium are as follows:

Name	Cell phone	Email
Andrew Simms (Chair)	027 434 6394	<a href="mailto:asimms@andrewsimms.co.nz">asimms@andrewsimms.co.nz</a>
Dean McAlwee (Deputy Chair)	027 272 6132	<a href="mailto:deanmac@xtra.co.nz">deanmac@xtra.co.nz</a>
Kathryn Anderson	021 115 6419	<a href="mailto:kathrynmtcb@gmail.com">kathrynmtcb@gmail.com</a>
Austen Banks	0274 370 727	<a href="mailto:abanks@xtra.co.nz">abanks@xtra.co.nz</a>
Regan Horrell	021 185 0017	<a href="mailto:Regan.horrell@gmail.com">Regan.horrell@gmail.com</a>
Brian Peat	021 581 253	<a href="mailto:peat23@hotmail.com">peat23@hotmail.com</a>
Cr Cherry Lucas (Councillor representative)	021 972 133	<a href="mailto:Cherry.Lucas@dcc.govt.nz">Cherry.Lucas@dcc.govt.nz</a>

## 2.3 MAP OF MOSGIEL-TAIERI COMMUNITY BOARD AREA



## 2.4 OUR COMMUNITY

- Schools**  
 There are 7 schools in the Mosgiel-Taieri Community Board area:  
 Taieri College  
 East Taieri School  
 Elmgrove School  
 Silverstream Primary School  
 St Mary's School  
 Amana Christian School  
 Outram School
- Geography**  
 The Taieri Plain is a low-lying, relatively flat expanse of land, located to the west of Dunedin City, covering an area of 21,000 hectares. Used for rural, residential, commercial and industrial activities, the Taieri Plain is home to approximately 20,000 people, mostly clustered in and around the urban areas of Mosgiel and Outram.

---

- *Hazards*

Much of the Taieri Plains is vulnerable to some level of risk associated with flooding. The effects of any given event will vary, however, depending on a range of factors, including antecedent conditions (such as soil moisture level and river flows), the location and magnitude of the rainfall event, the topography of the location, and the effectiveness of risk reduction measures including the lower Taieri Flood Protection Scheme and the East and West Taieri Drainage Schemes. The Taieri Plains may also be subject to other weather-related risks, earthquakes, and wildfire.



### Section 3. Priorities for our Community

The Mosgiel Taieri Community Board has identified the following priorities for our community which we would like to see included in the Council's annual plan 2024/25 and long term plan 2025/2034. Our Community Plan is a living document that will be included on the agenda at each of our Community Board meetings to be amended and added to as required.

#### **Priority 1. Gordon Road / SH87 Heavy Traffic By-Pass for Mosgiel**

Time frame: 2024 to 2027 Feasibility Study.  
2027 to 2030 Construction.

The need for a heavy transport by-pass for Mosgiel has been identified by the DCC for more than 20 years. The 2013 DCC Integrated Transport Strategy for Dunedin identified the need to separate the heavy transport using Gordon Road from the vulnerable population of Mosgiel characterised by school children and the elderly. The MTCB held a public meeting on this subject in 2023. This resulted in the DCC including the production of a feasibility study for a by-pass into their forward work plan and including this issue onto the Regional Land Transport Plan for the 2024/27 period. The Taieri remains the fastest growing region of Dunedin with continuing growth in housing and industrial activities. This growth means that the need for a heavy transport by-pass and a second properly formed entrance from SH1 into Mosgiel is now imperative. Currently there are an average of 540 heavy transport movements on Gordon Road every day, and this is set to continue growing with the growth and development of Mosgiel. It is essential that the DCC, the MTCB and the whole community keep the focus on getting the feasibility study completed and for the physical work to commence.

#### **Priority 2. Flood Protection for the Taieri.**

Time frame: 2024 to 2027 Maintenance of all ORC flood protection assets.  
2024 to 2027 Upgrade of DCC stormwater pumps and network.

Flood protection for the Taieri is a key concern for many residents on the Taieri. It has become apparent from various reports obtained or released by the ORC that the flood protection assets including flood banks and river channels will not perform as intended in the event of an adverse weather event. The prime concerns are the reduced capacity of the Silverstream because of this channel not being maintained, the integrity of the flood banks protecting Outram and the flood banks protecting the lower Taieri including Dunedin Airport. The MTCB will continue its efforts to have the ORC prioritise this work which will include informing the community on this matter. The MTCB will convene a public meeting during 2024 to this end.

The MTCB will continue to advocate for the upgrade of the stormwater network within Mosgiel to increase the ability for stormwater to be dealt with during times of heavy rainfall. This includes the planned upgrade of the stormwater pumps at Reid Avenue and Centre Street. The maintenance and improvement of the stormwater infrastructure that drains the low lying part of Gordon Road is needed to protect the business area that operate from here.



---

**Priority 3. Cycleways / Walkways onto the Taieri and across the Taieri.**

Time frame: 2024 to 2034 Funding and construction

The Mosgiel Taieri Community Board regards cycleways and walkways as essential to the future of our community and Dunedin City. Shared paths on the Taieri are important as a commuting option, recreational asset and tourist trail linking Dunedin to the thriving tourist market of Central Otago.

Priorities for the MTCB in the near future are:

- Stage one of the Tunnel Trail from Mosgiel to Green Island. (some work commenced)
- Stage one of the Taieri Trail from Mosgiel to Outram. (feasibility study complete)
- The extension of the Otago Central Rail Trail from Middlemarch through to the Taieri.
- The Outram Loop Track from Outram to the Glen via the Historic Park. (community project)

**Priority 4. Memorial Park Destination Playground**

Time frame: 2024 to 2027 Construction

The DCC has decided to establish three Destination Playgrounds for Dunedin, one of which is located within the Memorial Gardens, Mosgiel. A preliminary design has been released by the DCC for consultation. The preliminary design includes a significant skate park including a bowl and street skate area, along with other new play elements for children and young adults. The MTCB supports the preliminary design and the inclusion of a skate facility for the Memorial Park Destination Playground.

The MTCB will work closely with the DCC and the community advocating for the design and construction of this upgrade as a matter of urgency.

**Priority 5. The Redevelopment of Outram Glen.**

Time frame: 2024 to 2025 Construction.

As a result of many years of advocacy the DCC decided in 2023 to approve funding for the upgrade of Outram Glen which is a popular recreational area for Taieri and Dunedin residents. The upgrade includes increasing the size and otta-sealing of the car park, the installation of new toilets and a community barbecue. The DCC advises that this work will commence in Spring of 2024.

The MTCB will ask to be involved in the final design to ensure that the DCC and the community receive the best value from this redevelopment as it proceeds.

**Priority 6. The extension of the Otago Central Rail Trail from Middlemarch to the Taieri.**

Time frame: 2024 to 2025 Decision.

The DCC has advised that the future of the Taieri Gorge Railway will be decided following an exhaustive study into the best option for the city and ratepayers, followed by public consultation. The Mosgiel Taieri Community Board has a view that the Taieri community and the Dunedin community might be better served by an extension of the highly successful Otago Central Walking and Cycle Trail through to the Taieri.

The reasons for this include:

- The continued trading losses being incurred by Dunedin Railways.
- The expenditure required in the short term to complete the essential repairs and maintenance to make the railway safe, estimated by the DCC to be at least \$20M. This should be compared to the cost and benefit of building the walking and cycle trail, along with the relative maintenance costs of both options.
- The established economic and employment benefits offered by the creation of a world class cycle and walking trail through the Taieri Gorge to Dunedin.
- The unparalleled low-carbon, low-cost recreational asset provided to Dunedin ratepayers from a shared path.

---

**Priority 7. Pedestrian and road safety for Mosgiel and Outram.**

Time frame: 2024 to 2034 Implementation

The Mosgiel Taieri Community Board will advocate for improvements to footpaths and crossings throughout Mosgiel and Outram, along with other safety improvements. Immediate priorities include:

- New pedestrian crossings on Bush Road and Factory Road.
- New pedestrian crossing on SH87, Holyhead Street, Outram
- New footpath on Church Street Mosgiel outside St Mary's School.
- New footpath on Mountford Street, Outram.
- Safety speed limit changes as recommended in the 2023 Draft SMP, not implemented.
- Introduction of a Barnes Dance at corner of Factory Road and Gordon Road.
- Introduction of rubbish bins on the Silverstream Esplanade and adjacent to bus stops in Mosgiel.
- Installation of street lighting on Woodland Avenue.

**Priority 8. Park and Ride Transport Hub.**

Time Frame: 2024 to 2030 Implementation

The Mosgiel Taieri Community Board will advocate for the proposed Mosgiel Park and Ride facility to be built without delay. This facility is essential as many outlying communities such as Outram, Allanton and the Airport are not currently serviced by buses. This facility will give residents the option of driving to Mosgiel and then continuing their journey into Dunedin by bus and possibly train in the future.

**Priority 9. Reinstate Dunedin International Flights Campaign.**

Time frame: 2024 to 2027

The Mosgiel Taieri Community Board supports the Reinstate Dunedin International Flights Campaign launched by Taieri teenager, Benjamin Paterson. This will include participation in a working group set up to advocate for the reinstatement of international flights in and out of Dunedin alongside Benjamin, travel industry representatives and other influential parties.

**Priority 10. Community Information Board.**

Time frame: 2024 / 2025 Implementation

The Mosgiel Taieri Community Board will advocate for the installation, by the community, of a Community Information Board within the Gordon Road / Glasgow Street pocket park. The MTCB will talk to community service groups, some of whom have information boards elsewhere. The Board will investigate commercial sponsorship for the Information Board and also determine how the board will be managed and controlled.

---

### **Priority 11. Economic Growth on the Taieri**

Time frame: 2024 to 2034

The Mosgiel Taieri Community Board notes the recent rapid uptake of industrial land around Dukes Road North bringing new industries and new employment opportunities to our area. There is now a shortage of large industrial lots which is restricting future opportunities.

The Board supports the further rezoning of land around Dukes Road North to Industrial to provide for the continued growth of new businesses for the benefit of all Dunedin. This area has numerous advantages over other sites being considered for industrial development in Dunedin:

- The area is flat, and construction is easy,
- The area is served by a rail head linking it directly to Port Otago.
- Providing the ORC maintains the Mill Creek diversion, the area is not prone to flooding and new builds can be regulated to mitigate flood interruption.
- The area is close to a major population base.
- The area is largely unproductive currently.

The Board recommends that the 15-hectare lot on Dukes Road North, owned by the DCC and already zoned industrial is released to the market without delay.

In the longer-term areas south and north of the existing Industrial area should be considered for rezoning, particularly the area north from Gordon Road and the existing Industrial developments along with the area in proximity of the rail head.

The establishment of a heavy transport by-pass linking this area to SH1 remains vital for the efficiency of transportation and the well-being of the community.

### **Priority 12. Residential Growth on the Taieri**

Time frame: 2024 to 2034

While there is anxiety over the loss of traditional ¼ acre sections within inner Mosgiel, the community understands that in-fill housing developments are favoured by the council and appear to be favoured by buyers including first home buyers and downsizers.

The Board supports continued in-fill housing developments with the following recommendations:

- Restricted to inner-Mosgiel, close to amenities, green space and public transport.
- With urgency the DCC must improve the protection of special character homes and buildings with either special character zones or by updating its register of heritage buildings, or both. Mosgiel has several special character buildings within the in-fill zone which are not protected.
- Significant trees should be protected other than for the factors already identified by council.

The Taieri needs more quality housing to attract new families to our area from within Dunedin, within New Zealand, New Zealanders returning to Aotearoa, and new immigrants. A family of four moving to Dunedin adds to the prosperity of our city and contributes millions to the economy over several generations.

The Board supports careful development of quality subdivisions around Mosgiel and Outram with the following recommendations:

- All new developments must be away from areas that are likely to be flooded by the Taieri, Silverstream, Owhiro or Mill Creek.
- This favours the greenfield area currently semi-developed around Wingatui and some elevated sites. This area is largely unproductive at present with lot sizes that are uneconomic.
- In the longer term, elevated areas of East and West Taieri should be considered for future development.
- Infrastructure must be upgraded ahead of future demand, particularly stormwater drainage.

## **Section 4. Community Board Activities**

The Mosgiel Taieri Community Board has identified the following activities that the Community Board will deliver to our community throughout the year. These activities will be undertaken and funded by the Community Board.

### **Activity 1. Community Engagement Plan.**

The MTCB will engage with the constituents, service groups, business and organisations throughout the Mosgiel Taieri community to impart information that may be important to them, and to seek feedback on issues that concern the Board and the councils. This will be achieved by various initiatives, including:

- Engagement via Social Media channels.
- Printed MTCB newsletters and brochures.
- Distribution of supplied material from councils and agencies.
- Public meetings.
- Participation in meetings arranged by both councils.
- Participation in the Otago Taieri A and P show.
- Participation in the Party in the Park community event.

### **Activity 2. Community Response Plan.**

The DCC and the MTCB has a statutory role under the Civil Defence Emergency Management Act to respond in the event of a civil emergency occurring within our community. The Mosgiel Taieri Community Board has a responsibility to interface between the DCC, the Mosgiel Taieri Community Response Group and Otago Civil Defence Emergency Management.

The MTCB will continue to support the MTCRG to produce and manage an effective Community Response Plan for all Taieri communities.

### **Activity 3. Liaison with the Taieri Network.**

The MTCB will liaise closely with the DCC funded place-based group, The Taieri Network on matters of community interest and community benefit. The principal objective will be to ensure that both entities work together to deliver the best outcome for our community and the DCC.

### **Activity 4. Coronation Hall Trust.**

The MTCB will continue to have input into the Coronation Hall to ensure that this community facility is being used appropriately and with benefit to the community.

### **Activity 5. Taieri Trails Group.**

The MTCB will participate on the Taieri Trails Group to establish an off-road cycling and walking trail between Mosgiel and Outram, and then between Outram and Waihola.

---

#### **Activity 6. Otago Central Rail Trail – Taieri Gorge Working Party**

The MTCB is part of the OCRT working group which is responding to a motion of council asking for a feasibility and economic benefit study into the extension of the Otago Central Rail Trail from Middlemarch through to North Taieri via the Taieri Gorge Rail Corridor which is currently leased by the DCC from KiwiRail.

To date the Economic Benefit study prepared by renowned regional economist, Mr Benje Patterson, has been presented to the council. The feasibility study including the full cost of establishing the cycleway and walkway extension will be available by mid-2024.

#### **Activity 7. Reserve Management Committee**

The MTCB has a representative on the DCC Reserve Management Committee which is developing a Management Plan for Peter Johnstone Park, Memorial Park and Gardens, Murray Street Park and the Silverstream Esplanade. This work is important to all of our community and the Board values this opportunity to promote our ideas and aspirations for these amenities.

## Section 5. Plans

The Mosgiel Taieri Community Board has plans to support its activities and requirements. These plans are set out below.

### 5.1 Civil Defence Emergency Management Community Response Plan

In conjunction with the Mosgiel Taieri Community Response Group, the Mosgiel Taieri Community Board has contributed to the development of a Community Response Plan for the Taieri community.

This is an extensive plan which will be used in the event of a Civil Defence Emergency including flooding, earthquake, and wildfire.

This plan can be viewed at [https:// xxx](https://xxx)

### 5.2 Community Engagement Plan

Members of the community are invited to make a comment on the Mosgiel Taieri Community Board Community Plan at any time. You may have a view on the Board's priorities and actions. You may want to ask the Board to assist with an issue involving the DCC or the ORC. You are encouraged to have input into the Community Plan and work of the Mosgiel Taieri Community Board.

There are many ways that members of the community can do this:

- Verbally by contacting a board member directly using the contact details provided.
- Write to the board at the address below.
- In person at community events, public meetings or by presenting at the Public Forum section of a scheduled Board meeting.

Please send written communication to:

The Chairperson  
Mosgiel Taieri Community Board  
c/o Dunedin City Council  
P O Box 5045  
Dunedin 9058

Or by email to [asimms@andrewsimms.co.nz](mailto:asimms@andrewsimms.co.nz) or [governance.support@dcc.govt.nz](mailto:governance.support@dcc.govt.nz)

### **Section 6. Community Board Meeting Schedule 2024**

The Mosgiel Taieri Community Board meets regularly. Unless otherwise notified all Board meetings are held at the Downes Room, Mosgiel Public Library, Hartsonge Avenue, Mosgiel commencing at 12:30PM.

**Wednesday 7 February, 2024**

**Wednesday 17 April, 2024**

**Wednesday 12 June, 2024**

**Wednesday 4 September, 2024**

**Wednesday 13 November, 2024**



**MOSGIEL-TAIERI  
COMMUNITY BOARD**

50 The Octagon | Dunedin 9015 | PO Box 5045 | Dunedin 9058 | New Zealand  
E dcc@dcc.govt.nz P +64 3 477 4000 www.dunedin.govt.nz

Otago Regional Council Long Term Plan Submission 2024-2034

**Submission from the Mosgiel Taieri Community Board**

April 2024

Tena Koutou

Thank you for this opportunity to contribute to the ORC Long Term Plan 2024-2034.

We wish to speak to this submission.

Following engagement with our community, the Mosgiel Taieri Community Board (MTCB) offers the following feedback to the councillors and staff of the ORC ahead of long term decisions being made.

**Proposal 1. Investing in our Environment.**

The MTCB has not had the opportunity to consult with the community on this proposal.

**Proposal 2. Investing in our Public Transport.**

The MTCB regularly receives feedback from the community regarding public transport. This is summarised as follows:

- The Mosgiel Park-and-Ride proposal is essential for the Taieri as many smaller rural communities such as Outram and Allanton are not currently served by buses. Equally many elderly people within Mosgiel are confident enough to drive around Mosgiel, but not confident enough to drive or find a park in Dunedin. The MTCB believes that the Park-and-Ride facility would be heavily used and lead to a significant increase in public transport usage from the Taieri. The continuation of this project is essential.
- The Mosgiel express bus is well supported by the community. Some further consultation regarding the drop off points and timing would be useful.
- It is essential that the ORC continues to monitor loading on the Mosgiel buses at peak times to ensure that there are sufficient buses to safely meet the demand. It is critical that a significant increase in demand is anticipated when the Park and Ride opens, and that there are sufficient buses to meet demand.
- The proposed Dunedin / Airport / Balclutha service is supported, recognising that this may not provide a viable service for many airport users. The MTCB supports the consideration of a Dunedin/Mosgiel/Airport regular service timed to support flight arrivals and departures.
- (Note from the Chair). EV technology is advancing at a pace. Almost all vehicle manufacturers are spending almost all of their R and D budgets on EV development, amounting to billions of dollars per annum. By 2030 we should see widescale adoption of 'solid-state' battery technology in both light and heavy vehicles which will deliver significantly greater range, significantly faster and safer recharge rates, far greater availability, and importantly far less reliance on heavy metals within the battery unit. The ORC may be well served by pushing its adoption of electric buses out towards the end of this long term plan for this reason.



**Proposal 3. Changing our Rating System.**

This is a complex proposal which is very difficult to fully comprehend. The proposal is put in counterparts with various decisions resulting in varying outcomes. The MTCB provides the following input based on conversations with ratepayers within our area:

- Taieri landowners and residents have a perception that they do not receive value for money for their ORC rates. There are some exceptions, but these are generally those landowners of the lower Taieri who rely heavily on drainage schemes for existence.
- This perception is promoted by the ORC's apparent reluctance to maintain the drains, waterways, culverts, riverbeds and flood banks on which the Taieri relies. Given the relatively small amount of money required, this lack of attention to the maintenance and improvement of these assets is very difficult to comprehend or accept. The ratepayers of the Taieri need to see action for their rates, not endless reports and consultations.
- The methodology driving the rates calculation needs to be completely consistent. Taieri ratepayers are being asked to contribute to the Leith flood protection scheme targeted rate with the logic given that all of Dunedin benefits from the University and Hospital. All of Dunedin also benefits from the Airport. An equal argument can be made that all of Dunedin should therefore contribute to the targeted rate for the Lower Taieri Flood Protection Scheme.

**Infrastructure Strategy – Flood, drainage and river control.**

The MTCB regrets that it is in dispute with the ORC over its performance maintaining the drainage and flood protection schemes that the landowners and residents of the Taieri rely upon. The Taieri community considers the protection of life and property as the most important role of the Otago Regional Council. The risk of flooding is the greatest civil emergency risk faced by the Taieri.

The Taieri community realises that the ORC can not protect it from every weather eventuality. However, the community expects the ORC to do everything that it practically can to defend it from adverse weather events by maintaining and improving the drains, waterways, flood banks and other assets that are essential to the Taieri.

The ORC's published Level of Service states that the performance measure is "Major flood protection and control works are maintained, repaired and renewed to the key standards defined in relevant planning documents", with a target that "Schemes function to their constructed design standards". We ask that this level of service is met.

The MTCB has identified the following immediate priorities (in no particular order):

- **The restoration of the Silverstream channel to a flow capacity of 175 cumecs at the Gordon Road bridge.**

The Silverstream Flood Banks were designed and built in 1974 by the Otago Catchment Board as part of the Lower Taieri Flood Protection scheme, to protect Mosgiel from flooding. The flood bank on the true right below the Gordon Road bridge is engineered to commence over-topping when the Silverstream flow exceeds 175 cumecs, with flood water directed across the Gordon Road Spillway in preference to flooding Mosgiel. On construction in 1974, it was also estimated that overtopping on the Mosgiel side would occur if the flow exceeded 260 cumecs.

The ORC estimated in 2019 that overtopping will now occur at Gordon Road when the Silverstream flow exceeds 115 cumecs, as observed in the 2018 flood event. Presumably this means that Mosgiel will now flood if the flow exceeds 200 cumecs at the Gordon Road bridge. In 2019, the ORC attributed this loss of capacity to aggradation of the channel and degradation of the flood banks, both maintenance issues within its control.

Previously, the OCB and subsequently the ORC regularly maintained the Silverstream channel by removing gravel and maintain the flood banks. In the flood event of 2006, the ORC observed that overtopping of the Silverstream at the Gordon Road bridge commenced at a flow of 170 cumecs. This supports the effectiveness of the maintenance done on the channel between 1974 and 2006. Inexplicably the ORC suspended maintaining the Silverstream channel sometime after 2006 resulting in the significant reduction of capacity observed today.

The cost of restoring the capacity of the Silverstream is now estimated by the ORC at \$850 000, which is a relatively small amount of the total flood protection budget of the ORC. Even so, the ORC proposes spreading this cost over four years, taking a chance that the next big rain event won't eventuate in the meantime. When millions are being spent elsewhere, and when the consequences of an overtopping of the Silverstream in terms of the risk to life and property are so great, this lack of urgency is difficult to understand.

The MTCB asks that the work required to restore the Silverstream channel to its design capacity of 175 cumecs is commenced immediately, and once commenced is completed without pause.

Following the restoration of capacity, we ask that the maintenance of the Silverstream be on-going as part of the ORC's river channel maintenance schedule.

- **The maintenance and improvement of M4 and M3 culverts / Riccarton Road.**

Riccarton Road is a physical impediment to water flowing across the Gordon Road Spillway in the event that the Silverstream overtops. Culverts denoted as M3 and M4 are designed to allow this water to flow across the spillway and into the upper ponding area. The culverts are too small to cope with this flow putting numerous homes and properties at risk. M3 and M4 should be replaced with much larger culverts to cope with the anticipated flow reducing the risk to life and property for those living on the north side of Riccarton Road.

These improvements would deliver significant benefit for relatively low cost.

- **The remediation of the flood banks protecting Outram and the Airport.**

The shortcomings of the flood banks at Outram and Waipori are well documented and understood by the ORC. The MTCB acknowledges that work has commenced at both locations to determine what work is required to return these structures to perform optimally in the event of a flood.

The MTCB again urges the ORC to commence this work without delay, and to complete this work as a matter of urgency.

- **The maintenance of the Owhiro and Mill Creek waterways.**

The Owhiro Stream and Mill Creek waterways are vital during heavy rain events to drain water away from large areas of residential housing, aged care facilities and industrial areas across Mosgiel. Residents adjoining these waterways often contact the MTCB with concerns about the lack of maintenance of both waterways, specifically vegetation build up and aggradation.

The MTCB asks that these waterways be regularly inspected and maintained to offer the best protection from heavy rain events.

- **The inception of a ratepayer/landowner advisory group for the Lower Taieri Flood Protection Scheme.**

Local landowners, particularly farmers, have a wealth of knowledge and experience about the operation of the flood protection scheme and the consequences of flooding for various parts of the Taieri. The ORC should form a working group involving local farmers and residents, ORC staff and council appointment, and a MTCB appointment. This group

could assist the ORC to determine priorities for maintenance and improvement work based on outcome.

**Cycle Trails across the Taieri**

The MTCB fully supports the building of a cycle trail between Mosgiel and Outram, and ultimately on to Waihola to join with the Clutha Gold Cycle Trail.

The trail across the Taieri will rely heavily on access to the flood banks owned and managed by the ORC, and upon resource consent being granted for the trail. The MTCB understands that this provides some challenges for the ORC but submits that benefits to the community of a cycle trail in terms of a commuting, recreational and tourism amenity far outweighs the impediment for the ORC. Communities elsewhere are recognising that there shouldn't be a flood bank anywhere without a shared path on top of it, almost anywhere.

The MTCB recognises the work of ORC staff to date on this issue, and further asks for the full support of Councillors and Staff in progressing this trail. In particular:

- Resource consent for a 15km cycling and walking trail between Mosgiel and Outram
- Consent from ORC to building a trail across council owned land
- Consent from ORC to construct a trail on the various floodbanks
- Consent from DCC, ORC & NZTA (if required) to alter the existing pedestrian underpass under the Gordon Road bridge.

The MTCB acknowledges the willingness of staff and councillors of the ORC to meet with the community across the Taieri and listen to community concerns. Overwhelmingly the community are calling for more physical action and less reports, in return for their rates.

Andrew Simms – Chair  
Mosgiel Taieri Community Board.



**MOSGIEL-TAIERI  
COMMUNITY BOARD**

50 The Octagon | Dunedin 9015 | PO Box 5045 | Dunedin 9058 | New Zealand  
E [dcc@dcc.govt.nz](mailto:dcc@dcc.govt.nz) P +64 3 477 4000 [www.dunedin.govt.nz](http://www.dunedin.govt.nz)

Dunedin Fire Brigade Restoration Society,  
53a Main South Road,  
Dunedin.

Attn: Mr Steve McNulty, Building Committee Convenor

05 June 2024

Dear Mr McNulty,

Thank you for keeping the Mosgiel Taieri Community Board informed of your plans to establish a Fire Brigade Exhibition Hall at the Taieri Aerodrome in conjunction with the Taieri Aero Club. The plans that your society has along with the redevelopment of the Taieri Aero Club would be an invaluable addition to the Mosgiel Taieri community.

The Board understands that there are pressures on the existing users of the Aerodrome including the Aero Club and Helicopters Otago for space and resources. We encourage you to work closely with both entities to produce a workable solution within your development plans. The Board has been approached by the Taieri Aero Club for discussions around their ambitions alongside yours. It should be noted that the Taieri Aerodrome is under the control of a Trust and that the Mosgiel Taieri Community Board has no part in that administration other than its role as an advocate for the community.

The establishment of a Fire Brigade exhibition along with a café and an improved Aero Club facility will be an asset for the community. The Board notes that walking and cycling access to the proposed location will be included in your proposal which will provide recreational amenity to the residents of Mosgiel and visitors. This will link to the existing Silverstream Esplanade walkway and to the proposed Taieri Trail cycleway.

The Mosgiel Taieri Community Board supports your plans and offers whatever assistance it can appropriately provide to the Dunedin Fire Brigade Restoration Society to make your plans a reality.

Yours sincerely,

Andrew Simms, Chair  
For the Mosgiel Taieri Community Board.

## COMMUNITY PLAN

Department: Civic

### EXECUTIVE SUMMARY

- 1 The Mosgiel Taieri Community Board Plan is tabled for discussion at each meeting for the purpose of review and update as required by the Board.

### Signatories

Authoriser:	
-------------	--

### Attachments

There are no attachments for this report.

## **BOARD UPDATES**

---

Board members to provide verbal updates on activities :

- 1 **Taieri Network** – Kathryn Anderson
- 2 **Coronation Hall Trust**- Dean McAlwee
- 3 **Mosgiel and Taieri Emergency Group.** – Andrew Simms
- 4 **Outram Emergency Group** - Dean McAlwee
- 5 **Social Media/Media Platform and Community Engagement**– Regan Horrell
- 6 **Community Events** – Kathryn Anderson
- 7 **Taieri Trails Group** – Andrew Simms
- 8 **Community Board Executive Committee** – Regan Horrell

### **Attachments**

There are no attachments for this report.

## **CHAIRPERSON'S REPORT**

---

A report from the Chairperson is attached which updates the Board on matters of interest since the previous meeting.

### **Attachments**

	<b>Title</b>	<b>Page</b>
<a href="#">↓A</a>	Chair's Report	76



**Mosgiel Taieri Community Board****Chairpersons Report****June 2024**

Since our last meeting in April, the Mosgiel Taieri Community Board has submitted to the:

- The combined DCC / ORC Dunedin Future Development Strategy
- The DCC Annual Plan 2024/25
- The ORC Long Term Plan 2024/2034
- The Regional Land Transport Plan – Mid Term Review.

The Board's submissions in all cases were extensive and driven by the priorities identified in our Community Plan. I am satisfied that our submissions reflected the ambitions and concerns of the Mosgiel Taieri Community and that the Board adequately communicated these to both councils and both committees.

**Dunedin Future Development Strategy.**

The FDS is a high-level strategic document which sets out a 30 year vision for Dunedin dealing with important issues such as housing, business, 3 waters, transport and infrastructure. The full document is available from the DCC website and has extensive sections on both Mosgiel and the Taieri which are worth reading thoroughly. It is pleasing to recognise that the FDS incorporates much of what the MTCB has identified as priorities for our community. Here are some highlights:

- Mosgiel is experiencing rapid and significant growth with more than 6 000 homes and capacity for 3 400 more.
- There is potential for further housing intensification in Mosgiel, close to the centre of town.
- The FDS does not propose any further greenfield expansion around Mosgiel.
- Demand for industrial land around Dukes Road will continue.
- The Dukes Road North area is identified as an indicative location for an inland freight hub.
- The DCC needs to upgrade fresh water, wastewater and storm water infrastructure.
- Public transport services will be complemented by a new park and ride facility in the short term.
- Mosgiel is a priority area in the Dunedin strategic walking and cycling network.
- A key project is the development of the Tunnels Trail.
- Transport issues for Mosgiel include congestion at the Gordon / Gladstone intersection, safety issues with heavy vehicles on Gordon Road, informal by-passing of Gordon Road, pedestrian and cyclist safety particularly around schools.
- A Strategic Transport Study for Mosgiel will commence in 2024 to identify issues and address them.
- Mosgiel needs a variety of new or upgraded parks and recreational facilities.
- As Mosgiel grows it will need a new sports hub / indoor sports facility.
- The DCC will work with City Forests to establish a horse trail in the Takitakitoa Forest.
- Playground upgrades including the Memorial Park Playground / Skate Park redevelopment.
- Capacity for an additional 220 homes in Allanton, Outram and Middlemarch, constrained by 3 waters infrastructure and highly productive land.
- Cycling/Walking connection to Dunedin from the Clutha Gold Trail via Outram and Mosgiel.
- Planned upgrades to the playground in Allanton.
- Maintenance and upgrades of the Lower Taieri Flood Protection Scheme.

From the Mosgiel Taieri Community Board's perspective, it is much easier to advocate for changes and improvements that are already recognised in the Dunedin Future Development Strategy. This document certainly provides plenty for the Board and the Community to get its teeth into in the years to come.

The Board thanks the combined ORC/DCC FDS Panel which included our DCC Board Representative, Cr Cherry Lucas, for their efforts to understand and respond to the challenges and opportunities on the Taieri.



**DCC Annual Plan.**

The DCC have elected to defer its long term plan process initially scheduled for 2024 until next year due to the uncertainty created by a change in Central Government policy which is not yet fully developed. This means that the Board submitted to the DCC annual plan for the 2024/25 financial year.

The MTCB focussed on the key immediate issues in front of the community lifted directly from our Community Plan. The Board was pleased to note during the annual plan deliberations that the DCC understood and agreed with much of what the MTCB is asking for.

The priorities in our Community Plan must remain the focus for the Board throughout the year.

It was somewhat disappointing that Community Boards were allocated the same amount of time to present to council as a member of the public who wanted cats banned. Our presentation was truncated due to running over time when at least three questions were queued from councillors that went unheard and unanswered. The Board will raise this with the DCC.

**ORC Long Term Plan.**

The Mosgiel Taieri Community Board submitted to the ORC Long Term Plan focussing on:

- Maintenance of the flood protection and drainage assets which protect the Taieri communities to at least 100% of their design capacity.
- The establishment of a Lower Taieri Flood Protection scheme liaison group involving the ORC, local landowners and the Community Board.
- Seeking financial and practical support for cycle trails across the Taieri which may cross over and utilise ORC assets.

The Otago Regional Council deliberations were dominated by discussions amongst councillors and ORC staff around the maintenance, or lack of maintenance, of the Silverstream Flood Protection scheme. It was clear that there remains some divergence between some ORC councillors and some ORC staff regarding the level of service expected by the community from the Lower Taieri Flood Protection Scheme. This aligns with the MTCB's long held concern that the lack of maintenance on the Silverstream and other waterways is resultant from an ethos amongst some ORC councillors and staff that the waterways on the Taieri should be allowed to revert to their natural state, in preference to being maintained as "industrial flood protection schemes".

However, other councillors and the ORC CEO responded by saying that they had heard 'load and clear' from the Taieri community that they expected their lives and properties to be protected from flooding as an absolute priority. During these deliberations it appeared that this stance was in the majority, thankfully. There is a real onus upon the Mosgiel Taieri Community Board to continue the advocacy for our community in respect to flood protection on the Taieri. The requirement to communicate the communities' expectations to the ORC must remain first and foremost, in perpetuity.

There was strong support for the reconstitution of a Lower Taieri liaison group particularly from the ORC CEO and ward councillors so the Board could expect to hear more about this soon.

Support and funding was approved to assist with the building of the Taieri Trail between Mosgiel and Outram.

**Regional Land Transport Committee – RLTP mid-term review.**

The Mosgiel Taieri Community Board submitted to the mid term review of the Regional Land Transport Plan to the RLTC which is made up of ORC and DCC council representatives, and LTSA representatives.

The Board submitted on:

- The continuation of the Tunnel Trail project between Dunedin and Mosgiel.
- The formation of a Heavy Transport By-Pass for Mosgiel, the Quarry Rd / Gladstone / Gordon Rd intersection, the SH1 / SH 87 intersections.
- The proposed inland freight hub for the Taieri.

The presentation became a discussion between the committee members around the dysfunction of Mosgiel traffic which proved to be very productive. The shortcomings of Mosgiel traffic from both an efficiency and safety perspective were very well understood by the committee and align with what the

Taieri community has been asking for for decades. That said, the problems are complex, and the solutions are expensive but at least they are understood and agreed.

The next step is commencement of the Strategic Mosgiel Transport Study which is due to commence this year, and which will require significant input from the Mosgiel Taieri Community Board and the community.

The Board received an update on the maintenance of the mud-tanks across Mosgiel showing the location and status of each. It was encouraging to note the detail and extent of the maintenance of these vital stormwater assets.

The Board received an update on the completion of the new and exciting BMX / Pump Track at Seddon Park which is due to be completed and opened in June, except for the landscaping and some signage.

The Board was advised that work on the new toilet block at Outram Glen would commence in June, with construction of the road and carpark to commence in August. Final designs would be discussed with the Board in due course, but the location of the toilets was inflexible due to the location of the septic tank system accompanying.

The chair has requested information from Dunedin Railways Limited in respect to the safety concerns raised by Mr Kevin Phillips at our last Board meeting. There has been some communication between DRL and the Board with a commitment to provide the information before the end of June. DRL have also offered to meet with the Board to discuss our concerns.

There is plenty happening on the Taieri!

Andrew Simms  
Chair

---

## **COUNCILLOR'S UPDATE**

---

Councillor Cherry Lucas will provide an update on matters of interest.

### **Attachments**

There are no attachments for this report.

---

## **ITEMS FOR CONSIDERATION BY THE CHAIR**

---

Any items for consideration by the Chair.

### **Attachments**

There are no attachments for this report.