

Notice of Meeting:

I hereby give notice that an ordinary meeting of the Mosgiel-Taieri Community Board will be held on:

Date: Wednesday 5 February 2025
Time: 5.30 pm
Venue: Downes Room, Mosgiel Service Centre, Hartstonge Avenue,
Mosgiel

Sandy Graham
Chief Executive Officer

Mosgiel-Taieri Community Board
PUBLIC AGENDA

MEMBERSHIP

Chairperson	Andrew Simms	
Deputy Chairperson	Dean McAlwee	
Members	Kathryn Anderson	Austen Banks
	Regan Horrell	Cr Cherry Lucas
	Brian Peat	
Senior Officer	Sharon Bodeker, Special Projects Lead	
Governance Support Officer	Lauren Riddle	

Lauren Riddle
Governance Support Officer

Telephone: 03 477 4000
governance.support@dcc.govt.nz
www.dunedin.govt.nz

Note: Reports and recommendations contained in this agenda are not to be considered as Council policy until adopted.

ITEM	TABLE OF CONTENTS	PAGE
1	Public Forum	4
2	Apologies	4
3	Confirmation of Agenda	4
4	Declaration of Interest	5
5	Confirmation of Minutes	9
5.1	Mosgiel-Taieri Community Board meeting - 13 November 2024	9
PART A REPORTS (Mosgiel-Taieri Community Board has power to decide these matters)		
6	Governance Support Officer's Report	16
7	Board Updates	20
8	Chairperson's Report	21
9	Community Plan 2024-2025	26
10	Councillor's Update	41
11	Items for Consideration by the Chair	42

1 PUBLIC FORUM

At the close of the agenda no requests for public forum had been received.

2 APOLOGIES

An apology has been received from Brian Peat.

That the Board:

Accepts the apology from Brian Peat.

3 CONFIRMATION OF AGENDA

Note: Any additions must be approved by resolution with an explanation as to why they cannot be delayed until a future meeting.

DECLARATION OF INTEREST

EXECUTIVE SUMMARY

1. Members are reminded of the need to stand aside from decision-making when a conflict arises between their role as an elected representative and any private or other external interest they might have.
2. Elected members are reminded to update their register of interests as soon as practicable, including amending the register at this meeting if necessary.

RECOMMENDATIONS

That the Board:

- a) **Notes/Amends** if necessary the Elected Members' Interest Register attached as Attachment A; and
- b) **Confirms/Amends** the proposed management plan for Elected Members' Interests.

Attachments

	Title	Page
A	Register of Interest	6

Mosgiel-Taieri Community Board Register of Interest as at 5 February 2025				
Name	Responsibility (ie: Chairperson etc)	Declaration of Interests	Nature of Potential Interest	Proposed Management Plan
Andrew Simms	Owner	Residential Property, Mosgiel	No conflict identified	identified. Seek advice on actual or potential conflicts of interest prior to the meeting.
	Owner	Commercial Property, Property	No conflict identified	Withdraw from discussion and leave the table if a conflict of interest is identified. Seek advice on actual or potential conflicts of interest prior to the meeting.
	Managing Director	The Landseer Group Ltd	No conflict identified	Withdraw from discussion and leave the table if a conflict of interest is identified. Seek advice on actual or potential conflicts of interest prior to the meeting.
	Managing Director	Landseer Motor Investments Auckland Limited t/a Andrew Simms	No conflict identified	Withdraw from discussion and leave the table if a conflict of interest is identified. Seek advice on actual or potential conflicts of interest prior to the meeting.
	Director	Stephen Duff Motors Limited	No conflict identified	Withdraw from discussion and leave the table if a conflict of interest is identified. Seek advice on actual or potential conflicts of interest prior to the meeting.
	Managing Director	Minaret Property Investments Ltd	No conflict identified	Withdraw from discussion and leave the table if a conflict of interest is identified. Seek advice on actual or potential conflicts of interest prior to the meeting.
	Trustee	The Newfoundland Trust	No conflict identified	Withdraw from discussion and leave the table if a conflict of interest is identified. Seek advice on actual or potential conflicts of interest prior to the meeting.
	Trustee	The Moturata Trust	No conflict identified	Withdraw from discussion and leave the table if a conflict of interest is identified. Seek advice on actual or potential conflicts of interest prior to the meeting.
	Tenant	Wall Street Mall	No conflict identified	Withdraw from discussion and leave the table if a conflict of interest is identified. Seek advice on actual or potential conflicts of interest prior to the meeting.
	Trustee	Taieri Community Facilities Trust	No conflict identified	Withdraw from discussion and leave the table if a conflict of interest is identified. Seek advice on actual or potential conflicts of interest prior to the meeting.
	Member	Taieri Cricket Club	No conflict identified	Withdraw from discussion and leave the table if a conflict of interest is identified. Seek advice on actual or potential conflicts of interest prior to the meeting.
	Member	Taieri Tennis Club	No conflict identified	Withdraw from discussion and leave the table if a conflict of interest is identified. Seek advice on actual or potential conflicts of interest prior to the meeting.
Kathryn Anderson	Owner	Residential Property Owner, Mosgiel	No conflict identified	Withdraw from discussion and leave the table if a conflict of interest is identified. Seek advice on actual or potential conflicts of interest prior to the meeting.
	Chairperson	Silverstream Primary School Board of Trustees	No conflict identified	Withdraw from discussion and leave the table if a conflict of interest is identified. Seek advice on actual or potential conflicts of interest prior to the meeting.
	Member	Silverstram Primary School Friends of School	No conflict identified	Withdraw from discussion and leave the table if a conflict of interest is identified. Seek advice on actual or potential conflicts of interest prior to the meeting.
	Employee	Solutions and Services Ltd	No conflict identified	Withdraw from discussion and leave the table if a conflict of interest is identified. Seek advice on actual or potential conflicts of interest prior to the meeting.
	Member	CAANZ (Chartered Accountants Australian and New Zealand	No conflict identified	Withdraw from discussion and leave the table if a conflict of interest is identified. Seek advice on actual or potential conflicts of interest prior to the meeting.
	Member	Coeliac New Zealand	No conflict identified	Withdraw from discussion and leave the table if a conflict of interest is identified. Seek advice on actual or potential conflicts of interest prior to the meeting.
	Involved	Taieri Tennis Club	No conflict identified	Withdraw from discussion and leave the table if a conflict of interest is identified. Seek advice on actual or potential conflicts of interest prior to the meeting.

	Involved	Mosgiel Scout Group	No conflict identified	Withdraw from discussion and leave the table if a conflict of interest is identified. Seek advice on actual or potential conflicts of interest prior to the meeting.
	Involved	Taieri Rugby Club	No conflict identified	Withdraw from discussion and leave the table if a conflict of interest is identified. Seek advice on actual or potential conflicts of interest prior to the meeting.
	Involved	Taieri Plains Junior Netball	No conflict identified	Withdraw from discussion and leave the table if a conflict of interest is identified. Seek advice on actual or potential conflicts of interest prior to the meeting.
Austen Banks	Owner	Residential property - Mosgiel	No conflict identified	Withdraw from discussion and leave the table if a conflict of interest is identified. Seek advice on actual or potential conflicts of interest prior to the meeting.
	Member	Dunedin Club	No conflict identified	Withdraw from discussion and leave the table if a conflict of interest is identified. Seek advice on actual or potential conflicts of interest prior to the meeting.
	Director	Mosgiel Rotary Club	No conflict identified	Withdraw from discussion and leave the table if a conflict of interest is identified. Seek advice on actual or potential conflicts of interest prior to the meeting.
	Member	University Club	No conflict identified	Withdraw from discussion and leave the table if a conflict of interest is identified. Seek advice on actual or potential conflicts of interest prior to the meeting.
	Member	Otago Yacht Club	No conflict identified	Withdraw from discussion and leave the table if a conflict of interest is identified. Seek advice on actual or potential conflicts of interest prior to the meeting.
	Employee	Vet Life Animal Health Partners	No conflict identified	Withdraw from discussion and leave the table if a conflict of interest is identified. Seek advice on actual or potential conflicts of interest prior to the meeting.
	Trustee	Mary Charles Trust	No conflict identified	Withdraw from discussion and leave the table if a conflict of interest is identified. Seek advice on actual or potential conflicts of interest prior to the meeting.
	Shareholder	Various publicly listed companies	No conflict identified	Withdraw from discussion and leave the table if a conflict of interest is identified. Seek advice on actual or potential conflicts of interest prior to the meeting.
	Member	Dunedin Clay Target Club	No conflict identified	Withdraw from discussion and leave the table if a conflict of interest is identified. Seek advice on actual or potential conflicts of interest prior to the meeting.
	Member	Otago A & P Society	No conflict identified	Withdraw from discussion and leave the table if a conflict of interest is identified. Seek advice on actual or potential conflicts of interest prior to the meeting.
Regan Horrell	Zone 6 Representative	Community Board Executive Committee	No conflict identified	Withdraw from discussion and leave the table if a conflict of interest is identified. Seek advice on actual or potential conflicts of interest prior to the meeting.
	Special Needs Driver	Go Bus Transport	No conflict identified	Withdraw from discussion and leave the table if a conflict of interest is identified. Seek advice on actual or potential conflicts of interest prior to the meeting.
Dean McAlwee	Committee Member	West Taieri Rugby Club	Potential grants recipient	Withdraw from discussion and leave the table if a conflict of interest is identified. Seek advice on actual or potential conflicts of interest prior to the meeting.
	Owner	Residential Property, Mosgiel	No conflict identified	Withdraw from discussion and leave the table if a conflict of interest is identified. Seek advice on actual or potential conflicts of interest prior to the meeting.
	Member	Taieri Trails Group	No conflict identified	Withdraw from discussion and leave the table if a conflict of interest is identified. Seek advice on actual or potential conflicts of interest prior to the meeting.
	Member	Outram Emergency Group	No conflict identified	Withdraw from discussion and leave the table if a conflict of interest is identified. Seek advice on actual or potential conflicts of interest prior to the meeting.

				Withdraw from discussion and leave the table if a conflict of interest is identified. Seek advice on actual or potential conflicts of interest prior to the meeting.
Brian Peat	Owner	Commercial Property, Mosgiel	No conflict identified	Withdraw from discussion and leave the table if a conflict of interest is identified. Seek advice on actual or potential conflicts of interest prior to the meeting.
	Owner	Residential Property, Mosgiel	No conflict identified	Withdraw from discussion and leave the table if a conflict of interest is identified. Seek advice on actual or potential conflicts of interest prior to the meeting.
	Project Manager	Silverstram Beautification Project	No conflict identified	Withdraw from discussion and leave the table if a conflict of interest is identified. Seek advice on actual or potential conflicts of interest prior to the meeting.
	National President	Retirement Village Residents Association NZ	No conflict identified	Withdraw from discussion and leave the table if a conflict of interest is identified. Seek advice on actual or potential conflicts of interest prior to the meeting.
Cr Cherry Lucas	Trustee	Otago Farmers Market	No conflict identified.	Withdraw from discussion and leave the table if a conflict of interest is identified. Seek advice on actual or potential conflicts of interest prior to the meeting.
	Member	Otag A & P Society	No conflict identified.	Withdraw from discussion and leave the table if a conflict of interest is identified. Seek advice on actual or potential conflicts of interest prior to the meeting.
	Trustee	Henderson Lucas Family Trust - Residential Dunedin Property	No conflict identified.	Withdraw from discussion and leave the table if a conflict of interest is identified. Seek advice on actual or potential conflicts of interest prior to the meeting.
	Member	NZ Institute of Chartered Accountants	No conflict identified.	Withdraw from discussion and leave the table if a conflict of interest is identified. Seek advice on actual or potential conflicts of interest prior to the meeting.
	Member	Otago Museum Trust Board (Council Appointment)	No conflict identified	Seek advice prior to the meeting if actual or perceived conflict of interest arises.
	Member	Dunedin Chinese Garden Advisory Board (Council Appointment)	No conflict identified	Seek advice prior to the meeting if actual or perceived conflict of interest arises.
	Member	Toitū Otago Settlers Museum Board (Council Appointment)	No conflict identified	Seek advice prior to the meeting if actual or perceived conflict of interest arises.
	Member (alternate)	Grow Dunedin Partnership (Council Appointment)	No conflict identified	Seek advice prior to the meeting if actual or perceived conflict of interest arises.
	Member	Mosgiel Taieri Community Board (Council Appointment)	No conflict identified	Seek advice prior to the meeting if actual or perceived conflict of interest arises.
	Representative	Local Government New Zealand - Zone 6	No conflict identified	Seek advice prior to the meeting if actual or perceived conflict of interest arises.
	Trustee	Taieri Airport Trust (Council Appointment)	No conflict identified	Seek advice prior to the meeting if actual or perceived conflict of interest arises.
	Member	Te Poāri a Pukekura Partnership (Council Appointment)	No conflict identified	Seek advice prior to the meeting if actual or perceived conflict of interest arises.

CONFIRMATION OF MINUTES

MOSGIEL-TAIERI COMMUNITY BOARD MEETING - 13 NOVEMBER 2024

RECOMMENDATIONS

That the Board:

- a) **Confirms** the public part of the minutes of the Mosgiel-Taieri Community Board meeting held on 13 November 2024 as a correct record.

Attachments

	Title	Page
A↓	Minutes of Mosgiel-Taieri Community Board meeting held on 13 November 2024	10

Mosgiel-Taieri Community Board

MINUTES

Minutes of an ordinary meeting of the Mosgiel-Taieri Community Board held in the Downes Room, Mosgiel Service Centre, Hartstonge Avenue, Mosgiel on Wednesday 13 November 2024, commencing at 12.30 pm.

PRESENT

Chairperson	Andrew Simms
Deputy Chairperson	Dean McAlwee
Members	Kathryn Anderson
	Austen Banks
	Regan Horrell
	Brian Peat
	Cr Cherry Lucas

IN ATTENDANCE Sharon Bodeker (Special Projects Lead).

Governance Support Officer Jennifer Lapham

1 PUBLIC FORUM

1.1 Eve Beardsmore – Proposed Dog Control Policy and Bylaw – Woodside Glen

Mrs Beardsmore spoke to the Board about her concern that the Proposed Bylaw allows dogs off in Woodside Glen. She spoke about the will of Herbert Marquis Carr and that he had bequeathed the land for the use of residents. She sought the help of the Board to stop dogs running in the Glen.

1.2 Ray Beardsmore – Proposed Dog Control Policy and Bylaw – Woodside Glen

Mr Beardsmore spoke to the proposal to allow dogs off leash in the Woodside Glen, he suggested that there is a more appropriate area by the Outram Bridge that dogs can use.

1.1 Taieri Network - Funding Application

Teresa Christie spoke to the Board regarding the funding application from the Taieri Network for assistance with the Very Taieri Christmas.

Cr Lucas entered the meeting at 12.51 pm.

2 APOLOGIES

An apology was received from Cr Lucas for lateness

Moved (Andrew Simms/Regan Horrell):

That the Board:

Accepts the apology for lateness from Cr Lucas.

Motion carried

3 CONFIRMATION OF AGENDA

Moved (Andrew Simms/Kathryn Anderson):

That the Board:

Confirms the agenda without addition or alteration

Motion carried

4 DECLARATIONS OF INTEREST

Members were reminded of the need to stand aside from decision-making when a conflict arose between their role as an elected representative and any private or other external interest they might have.

There were no amendments to the Interest Register.

Moved (Andrew Simms/Austen Banks):

That the Board:

- a) **Notes** the Elected Members' Interest Register; and
- b) **Confirms** the proposed management plan for Elected Members' Interests.

Motion carried (MTCB/2024/040)

5 CONFIRMATION OF MINUTES**5.1 MOSGIEL-TAIERI COMMUNITY BOARD MEETING - 4 SEPTEMBER 2024**

Moved (Andrew Simms/Austen Banks):

That the Board:

- a) **Confirms** the minutes of the Mosgiel-Taieri Community Board meeting held on 4 September 2024 as a correct record.

Motion carried (MTCB/2024/041)

PART A REPORTS**6 OTAGO REGIONAL COUNCIL - PUBLIC TRANSPORT**

Sumit Saini (Implementation Advisor – Transport, Otago Regional Council) spoke to the Board about proposed changes to the Unit 5 Contract (The Bus Loop). He advised that the service would become an on demand service and would provide greater coverage and more flexibility than the existing service.

7 PROJECT FUND

Consideration was given to the funding application from the Taieri Network for a \$1,000.00 towards the Very Taieri Christmas

Moved (Andrew Simms/Kathryn Anderson):

That the Board:

- a) **Approves** a grant of \$1,000.00 to the Taieri Network to assist with costs of the Very Taieri Christmas programme. .

Motion carried (MTCB/2024/042) with Brian Peat voting against

8 2025 MEETING SCHEDULE

Consideration was given to the 2025 meeting schedule.

Moved (Andrew Simms/Cr Cherry Lucas):

That the Board:

- a) **Adopts** the 2025 meeting schedule with meetings commencing at 5.30 pm.

Motion carried (MTCB/2024/043)

9 GOVERNANCE SUPPORT OFFICER'S REPORT

In a report from Civic an update was provided on matters of interest since the last Board meeting including:

- a) Project Fund
- b) Party in the Park and Taieri AMP Show Funding
- c) Water Services Survey
- d) Reid Park Avenue Pump Upgrade

Discussion took place on participating in Party in the Park and the Taieri AMP Show, and it was agreed to allocate funding towards this.

Moved (Andrew Simms/Dean McAlwee):

That the Board:

- a) **Notes** the Governance Support Officer's Report.
- b) **Allocates** up to \$1,500.00 (excl. GST) towards participating in Party in the Park and the Taieri AMP show.

Motion carried (MTCB/2024/044)

10 COMMUNITY PLAN 2024-2025

Consideration was given to the Community Board Plan. It was agreed that this would be fully reviewed at the next meeting.

11 BOARD UPDATES

1 Taieri Network

Kathryn Anderson advised that she had meet with Teresa Christie. The Taieri network are looking at creating a newsletter and would be interested in working with the Board.

2 Coronation Hall Trust-

Dean McAlwee advised that a meeting had not been held.

3 Mosgiel and Taieri Emergency Group

Andrew Simms advised that a community engagement event had been held at the Taieri College. He advised that the event was live streamed, which had received a large number of views.

4 Outram Emergency Group

Dean McAlwee advised that there was no update.

5 Social Media/Media Platform and Community Engagement–

Regan Horrell advised that the facebook page had 2,500 followers. It was noted that the Chairperson was now doing the OAR radio slot. He was looking at doing a video to get the community to use the DCC “Fix-it-Form.”

6 Taieri Trails Group

Andrew Simms and Dean McAlwee provided an update on progress for the Mosgiel to Outram Trail. He advised that they had meet with the affected land owners and had received approval to use the land.

Dean McAlwee advised that the historical loop track had been marked out.

Andrew Simms advised that he had an on site visit for the Tunnel and walked through it. He commented that the DCC were committed to funding the trail.

7 Community Board Executive Committee

Regan Horrell advised that a meeting had been held in Wellington. The Committee was producing a guide for good Council/Community Board relationships.

12 CHAIRPERSON'S REPORT

The Chairperson spoke to his report and tabled additional comments on the Taieri Gorge Railway.

13 COUNCILLOR'S UPDATE

Cr Lucas provided an update on the long term plan workshops and they had visited a large number of council sites. She also commented on Seddon Park, the notification of the 2GP and the meeting in the Town Hall on the proposed cuts to the hospital build.

14 ITEMS FOR CONSIDERATION BY THE CHAIR

The following items were raised:

- Request to obtain maps from the ORC for the new bus routes

- Assurance that the Reid Park pump upgrade will commence
- Check that the Heavy Vehicle Bypass study will happen
- Seddon Park – signage needed regarding the locked gate and arrows on the pump track
- Has the West Taieri Flood Protection Group been reconstituted by the ORC
- What is happening with Saddle Hill mining monitoring.

The meeting concluded at 2.36 pm .

.....
CHAIRPERSON

PART A REPORTS

GOVERNANCE SUPPORT OFFICER'S REPORT

Department: Civic

EXECUTIVE SUMMARY

- 1 This report is to inform the Mosgiel-Taieri Community Board on activities relevant to the Board's area including:
 - a) Project Fund
 - b) OAR 'Round The Boards Package 2025
 - c) Otago Regional Council – Water Catchment Committee
 - d) 9 year plan
 - e) Dunedin City Council Updates

RECOMMENDATIONS

That the Board:

- a) **Notes** the Governance Support Officer's Report.

ITEMS FOR DISCUSSION

Project Fund

- 2 The Board has \$7,040.00 to allocate in the current financial year.

Meeting Date	Amount (excl. GST)	Recipient
4 September	\$1,000.00	Rotary Club of Mosgiel – planter boxes
	\$460.00	Up to \$2,000 toward Combined AF8/Civil Defence Emergency Management, FENZ, MTCERG Community Meeting
		<i>Taieri College – Meeting Venue \$460.00</i>

Meeting Date	Amount (excl. GST)	Recipient
13 November 2025	\$1,500.00	Funding to participate in Party in the Park and the Taieri AMP Show.
Total	\$2,960.00	

OAR 'Round the Boards Package

- 3 Over the past several years, our Community Access radio station has hosted a regular weekly feature on the *OAR Morning Show* called 'Round The Boards. This 10-15min segment provides an opportunity for Dunedin Community Boards to chat informally with programme host Jeff Harford about initiatives and issues of the day, relevant to each community.
- 4 The board is now asked to consider if it wishes to continue participating this programme. The cost is \$220 (excl GST) for 11 x monthly sessions. (Attachment A).

Otago Regional Council – Lower Taieri Flood Protection & Drainage Scheme Liaison Group

- 5 A request has been received for a representative of the Board to be appointed to the Lower Taieri Flood Protection & Drainage Scheme Liaison Group.

Draft 9 Year Plan 2025-2034

- 5 Draft operating budgets for the 9 Year Plan 2025-2034 were presented to Council on 28-30 January 2025, in preparation for the public consultation.
- 6 Public consultation for the 9 Year Plan 2025-2034 will commence on 31 March with the submission period closing on 30 April 2025. Public hearings will be held 6-9 May 2025, with Council deliberations on the 9 Year Plan 2025-2034 to be held on 26-29 May 2025.

Roadworks Schedule

- 13 Information on current notified road closures and the roadworks schedule (a weekly list of programmed works) for Council's maintained roads is available on the DCC website via these links: <https://www.dunedin.govt.nz/news-and-events/public-notice/roadworks-schedule> and <https://www.dunedin.govt.nz/news-and-events/public-notice/notified-road-closures>.

Currently Consulting On

- 14 For the most up to date information on what DCC is consulting on, please visit <https://www.dunedin.govt.nz/council/currently-consulting-on>

Dunedin City Council Updates

- 15 Board or members of the public wishing to advise Council of any operational issues or concerns, e.g., potholes, vegetation, burst pipes are reminded to contact the Dunedin City Council Customer Services Agency on 03 477 4000 or email dcc@dcc.govt.nz. For any non-urgent matter please contact council via the online "Fix it form" <https://www.dunedin.govt.nz/do-it-online/report/fix-it-form>

- 16 If issues and concerns are not dealt with in a timely manner, Board Members should contact the Governance Support Officer, or the Senior Staff Member appointed to the Board.

Signatories

Author:	Jennifer Lapham - Governance Support Officer
Authoriser:	Sharon Bodeker - Special Projects Manager

Attachments

	Title	Page
⬇️A	OAR 'Round the Boards.	19



Reaching Local Audiences with OAR FM

Proposal for Consideration by Dunedin Community Boards

***'Round the Boards* segment on the OARsome Morning Show with Dunedin Community Boards**

Are you looking for an effective, affordable way to share important updates, stories and messaging with the people of your community?

OAR FM airtime will expand your reach to a broad grassroots listenership that supports a wide range of local initiatives.

OAR FM's *'Round the Boards* Package includes:

- 11 x monthly live-to-air interview* with a Community Board representative (10-15 min) broadcast on the *OARsome Morning Show* with Jeff, Tuesdays at 8.35am.
*interviews can be by telephone or in-person at OAR FM's studio

Plus, your radio feature becomes a valuable online resource as a podcast!

- easily emailed to your mailing lists, online networks
- easily linked from your website and social media
- available from oar.org.nz, Spotify, Apple Podcasts, tunein and more

In 2024, nearly 800 *'Round the Boards* podcast episodes were listened to online.

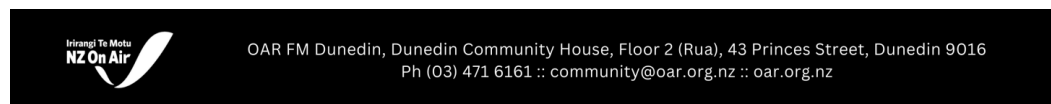
**Delivered for \$220 + GST (that's just \$20 + GST per spot)
Payment requested in advance of the series commencing**



For further information and to discuss options, please contact:

Jeff Harford – OAR FM Community Liaison e: community@oar.org.nz ph 03 471 6161

Lesley Paris – OAR FM Manager e: manager@oar.org.nz ph 03 471 6161



BOARD UPDATES

Board members to provide verbal updates on activities :

- 1 **Taieri Network** – Kathryn Anderson
- 2 **Coronation Hall Trust**- Dean McAlwee
- 3 **Mosgiel and Taieri Emergency Group.** – Andrew Simms
- 4 **Outram Emergency Group** - Dean McAlwee
- 5 **Social Media/Media Platform and Community Engagement**– Regan Horrell
- 6 **Taieri Trails Group** – Andrew Simms
- 7 **Community Board Executive Committee** – Regan Horrell

Attachments

There are no attachments for this report.

CHAIRPERSON'S REPORT

A report from the Chairperson is attached which updates the Board on matters of interest since the previous meeting.

Attachments

	Title	Page
↓A	Chairperson's Report	22

Mosgiel Taieri Community Board**Chairpersons Report****February 2025**

Welcome to 2025. This year sees the formation and adoption of the DCC's nine year long term plan and 2025 is also a local body election year. It will be a busy year for council staff, councillors and community boards as they all seek to contribute to the long term plan. Community Boards have a particular role in gathering feedback from the community and then advocating for what is important to the part of Dunedin that the board represents. The Mosgiel Taieri Community Board represents over 20 000 residents and landowners on the Taieri along with an ever increasing and changing business community.

The Taieri remains the fastest growing residential area of Dunedin with significant subdivisions and retirement village developments underway. A new manufacturing plant is to be built in the McGlashan Street industrial area and the establishment of an Inland Port by Port Otago and private investors for North Taieri is well advanced. This growth is exciting for the Taieri but it brings with it significant social and infrastructure challenges which have either not been anticipated by the DCC, or have not been addressed.

The most glaring of these issues is roading. The inability of Mosgiel roads and intersections to cope with the volume and the type of traffic negotiating Mosgiel every day has been known about for 20 years. A heavy transport by-pass for Mosgiel was identified as a priority for the DCC in 2003. Again in 2013 the DCC Integrated Transport Plan identified the separation of heavy traffic from the vulnerable population of Mosgiel, characterised by children and elderly citizens, as a priority. The congestion within Mosgiel and the dysfunctional intersection of SH1 and SH87 in and out of Mosgiel is dangerous and grossly inefficient. The tailback of traffic trying to get into Mosgiel is now routinely to the top of Saddle Hill where you now have traffic travelling at 100 km/hr coming over the brow of the hill encountering stationary vehicles waiting to enter Mosgiel. In the short term there will inevitably be a fatal accident caused by this hazard.

The work promised by the DCC to produce yet another integrated transport plan for Mosgiel has not yet started. Some discussion at this week's DCC plan indicated that this plan would be completed to coincide with the commencement of the next NZTA funding round in 2027. At the same meeting the council voted to entirely fund an upgrade of the Peninsula Road between Portobello and Harwood in the order of \$17M to \$20M, a road which services 300 residents. NZTA will not co-fund the Peninsula Road because it does not meet their criteria, so this cost falls entirely to the Dunedin City ratepayer.

This issue must remain the number one priority of the Mosgiel Taieri Community Board.

The Board had the opportunity to seek feedback from the large numbers of Taieri people attending the Taieri A and P show on January 25th. We also have a further opportunity to gather input from the community at the upcoming Party in the Park event in February. Following the Party in the Park event, all the feedback will be collated and used by the Board to inform the revision of our Community Plan for 2025. The priorities in our Community Plan will form the basis of our submission to the DCC Long Term Plan.

There are some updates that I can provide that will contribute to this process:

Priority 1 – Gordon Rd / SH 87 Heavy traffic By-Pass

As above.

Priority 2 – Cycleways / Walkways onto the Taieri.

The DCC have decided to follow suit with NZTA and cease funding for the Tunnel Trail between Mosgiel and Dunedin. This is despite numerous references in the 1220 pages of reports that went to council from staff describing the value and advantages delivered by the Tunnel Trail to the entire city.

This is bitterly disappointing, especially when it is read alongside other decisions made by council leading into the nine year plan. Our disappointment is insignificant when compared to the Tunnel Trail Trust, some of whom have put 15 years into the trail, and had believed that it would be delivered.

The DCC will complete part of section 1 between Mosgiel and Abbotsford using funds allocated in this financial year, enough to get into and through the Wingatui Tunnel. The Tunnels Trail Trust may then attempt to complete section 1 as a community project.

Work on landowner consents and design for section 1 of the Taieri Trail from Mosgiel to Outram continues to be done by the Taieri Trail Trust.

The extension of the OCRT is discussed later.

The Outram Loop Track from Outram to the historic park which is being built as a community project without funding from the DCC is awaiting landowner (DCC) consent.

Priority 3 – Flood Protection.

The ORC have advised that they now have consent and will commence restoring the capacity of the Silverstream this month. The work will be done in stages but the Board has received an assurance that it will be completed sooner than later.

The ORC has formed a landowner advisory panel which the Board has a seat on. This group will assist the ORC to determine priorities on the Taieri, and also provide a conduit for information to flow back to the community.

The DCC forward work plan includes more upgrades to the Mosgiel stormwater system including the renewal of the Reid Avenue pumps. Concern remains regarding the impact of the Wals subdivision on the stormwater network.

Priority 4 – Pedestrian and Road Safety

The Board is no further on with any of the identified issues.

Priority 5 – Memorial Park Destination Playground

The draft plans for the creation of three destination playgrounds in Dunedin remain in the nine-year plan with Memorial Park shown for construction in 2027. The final design and inclusions remain to be confirmed and this should be something that the Board keeps a close eye on.

Priority 6 – The extension of the OCRT from Middlemarch to the Taieri.

The DCC held a non-public meeting in December and unanimously voted to support the restoration of the Taieri Gorge Railway back to Middlemarch. Further the council revoked previous resolutions of council from 2021 and 2024 to investigate and consider the option of a cycleway / walkway for the Taieri Gorge.

At last weeks DCC meeting the council voted unanimously to grant Dunedin Railways Limited \$2M per annum ad infinitum for track renewals and maintenance. The cost of these renewals is estimated at \$18M to \$20M using figures produced in 2020 by DRL. This estimate ignores the repeated warnings given to the DCC in 2022 by engineering consultants Holmes and Vitruvius that DRL's cost estimates were inadequate and needed to be updated. The timing of the expenditure of \$2M per annum ignores the safety warnings given by Holmes and Vitruvius regarding the quantum of work that needed to be done in the short term to ensure the safety of the railway.

DCHL have appointed Mr Adrian Januszkiewicz as executive chairman of DRL. Mr Januszkiewicz has a long and successful record with tourist businesses including being CEO of Shotover Jet. His arrival at DRL along with the appointment of Rebekah Jenkins has brought renewed confidence in the future of the Taieri Gorge Railway. It has also bought some honesty into the projected financial performance of DRL that has not always been the case in the past.

Highlights of Mr Januszkiewicz's presentation to the DCC at last week's meeting included:

- \$2M of ratepayers money will be required each year to fund track maintenance.
- DRL will lose an estimated \$800 000 in this financial year from trading losses.
- By increasing ticket prices, renewing marketing efforts and taking back the cruise ship business from Pounamu Tourism, it is forecast that DRL can reduce its trading losses back to break even in three years, not allowing for any of the track maintenance costs.
- Beyond that point DRL may be able to start making a contribution towards track maintenance costs to reduce the burden on ratepayers.

Mr Januszkiewicz closed his presentation by suggesting that if this becomes a complete disaster (presumably he meant financial disaster and not physical disaster) then in three years' time the council could make a different decision.

A unanimous motion of council has to be respected which, along with this council's determination to revoke previous resolutions of council to evaluate the option of a cycle trail, means that there is no value in the Board continuing its advocacy for the consideration of an extension of the Otago Central Rail Trail through to Dunedin. I will be recommending to the Board that we remove this from our Community Plan and instead put our efforts into assisting the Tunnel Trail Trust to complete section 1 of the Tunnel Trail from Mosgiel to Green Island.

Priority 7 – Park and Ride Transport hub.

To be updated.

Priority 8 – Reinstate Dunedin International Flights Campaign

To be reviewed following the success of this campaign and Dunedin Airport Limited in attracting international flights later this year.

Priority 9 – Community Information Board

Consideration to allocating funds to make this a Community Board project.

Priority 10 – Economic Growth

All aspects to be reviewed.

Priority 11 – Residential Growth

The DCC have commenced the process of giving heritage protection to a number of houses and building on the Taieri. The consultation for this has begun with hearings expected later this year.

Infrastructure concerns remain.

All aspects should be reviewed.

The Board welcomes the opportunity to advocate for our community during the DCC nine year plan process, and we should work hard to ensure our submission is as comprehensive and thorough as possible to achieve the outcomes we need for the Taieri.

Thank you

Andrew Simms

Chair

COMMUNITY PLAN 2024-2025

Department: Civic

EXECUTIVE SUMMARY

The Community Board Plan is tabled for discussion at each meeting for the purpose of review and update as required by the Board.

The Board's Community Plan assists to contribute to the Council's 10-year plan with focus on:

- 1 **new and current priorities** (in order of importance with justification and estimated costs for each) for inclusion in the DCC 10-year Plan
- 2 **items the Board would like for delivery to the community** (for items that would not require support or funding from the DCC, over and above the Community Board funding)

Signatories

Authoriser:	Scott MacLean - General Manager, Climate and City Growth
-------------	--

Attachments

	Title	Page
↓A	Community Plan	27



Community Plan

2025/2026

APRIL 2024

Mosgiel Taieri Community Board

Mosgiel Taieri Community Board. Community Plan 2025-2026 – adopted 17 April 2024

SECTION ONE	
Introduction	1
SECTION TWO: KEY INFORMATION	
2.1 Background	2
2.2 Board Members and their Contact Details	3
2.3 Map of Community Board Area	4
2.4 Our Community	4
SECTION THREE: PRIORITIES FOR OUR COMMUNITY	
3.1 Community Board Priorities	6
SECTION FOUR: COMMUNITY BOARD PROPOSED ACTIVITIES	10
SECTION FIVE: PLANS	
5.1 Emergency Plan – Community Board Response Plan	12
5.3 Community Engagement Plan	12
SECTION SIX: COMMUNITY BOARD MEETING SCHEDULE	13

1 INTRODUCTION

This Community Board Community Plan summarises the needs and priorities of the communities within the Mosgiel-Taieri Community Board area for the 2025/2026, and the Dunedin City Council's (DCC) 2025-34 long term plan. Its primary objective is to signal to the DCC those priorities for our community, with the ultimate goal that they are programmed into the DCC's 10-year plan and funded by the DCC. These priorities are shown in section 3 of this plan.

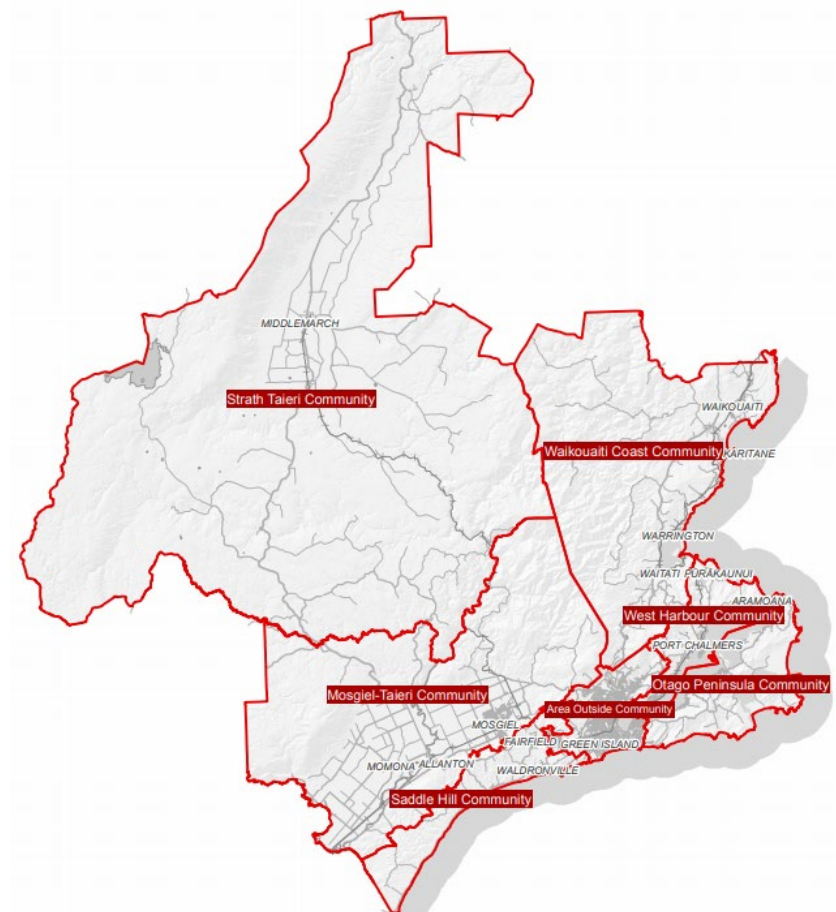
This Plan also includes activities that we, the Community Board plan to undertake. Our most important role is to be an advocate for our community, but we also proactively support our community in other ways, and these are set out in section 4 of this plan.

This Plan is subject to change and revision as needs arise and priorities alter.

2 KEY INFORMATION

2.1 BACKGROUND

The City of Dunedin has six Community Boards within its boundary, as shown in the map below.



Each Community Board has six elected members, and one councillor representative. The Community Board members are elected every three years as part of the local body elections. Community Boards must comply with the same rules and regulations as council, such as the Local Government Act.

The primary role of a Community Board is one of advocacy for its community. Each Community Board makes representations to the DCC on the priorities those boards have identified for their community area, that they would like to see included and funded in the council's annual plans and 10 year plans.

Any matters of an operational nature, e.g., the reporting of potholes, tree issues etc., are reported to council via the DCC's 477 4000 phone number, and do not form part of the Community Board's priorities.

Each Community Board holds public meetings approximately every 2 months, and these meetings are advertised on the DCC website and in the Otago Daily Times. The meeting schedule for the 2023 calendar year is provided in Section 6 of this plan. The agendas and minutes from those meetings are also available on the DCC website at <https://www.dunedin.govt.nz/council/council-meetings/agendas-and-minutes>

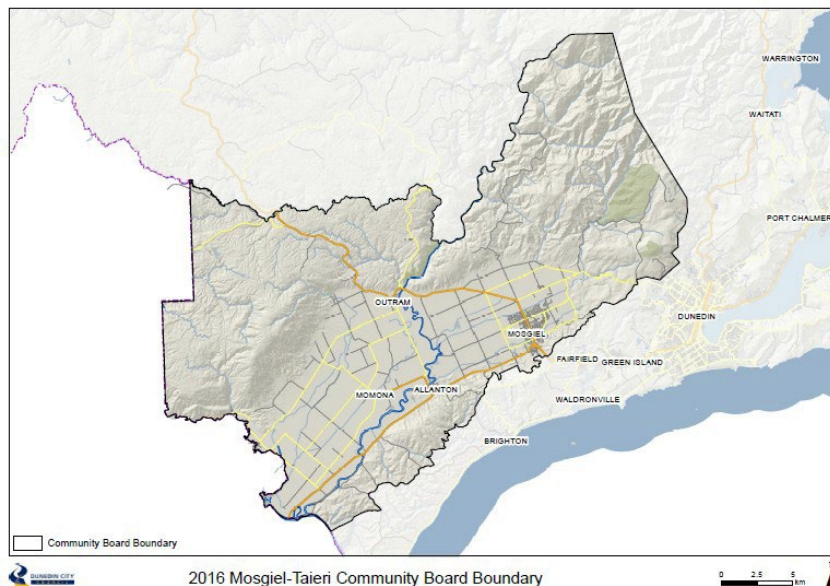
At the start of each meeting, there is a public forum session, which gives anyone from the community the opportunity to present to the board members their views on any topic. Anyone wishing to speak at public forum must make a request to speak at least 24 hours before the day of the meeting. They can do this via the Chair of the Community Board or contact a Governance Support Officer at the DCC at governance.support@dcc.govt.nz.

2.2 BOARD MEMBERS AND CONTACT DETAILS

Board members for the 2022 – 2025 triennium are as follows:

Name	Cell phone	Email
Andrew Simms (Chair)	027 434 6394	asimms@andrewsimms.co.nz
Dean McAlwee (Deputy Chair)	027 272 6132	deanmac@xtra.co.nz
Kathryn Anderson	021 115 6419	kathrynmtcb@gmail.com
Austen Banks	0274 370 727	abanks@xtra.co.nz
Regan Horrell	021 185 0017	Regan.horrell@gmail.com
Brian Peat	021 581 253	peat23@hotmail.com
Cr Cherry Lucas (Councillor representative)	021 972 133	Cherry.Lucas@dcc.govt.nz

2.3 MAP OF MOSGIEL-TAIERI COMMUNITY BOARD AREA



2.4 OUR COMMUNITY

- Schools**
 There are 7 schools in the Mosgiel-Taieri Community Board area:
 Taieri College
 East Taieri School
 Elmgrove School
 Silverstream Primary School
 St Mary's School
 Amana Christian School
 Outram School
 One School Global
- Geography**
 The Taieri Plain is a low-lying, relatively flat expanse of land, located to the west of Dunedin City, covering an area of 21,000 hectares. Used for rural, residential, commercial and industrial activities, the Taieri Plain is home to approximately 20,000 people, mostly clustered in and around the urban areas of Mosgiel and Outram.

- *Hazards*

Much of the Taieri Plains is vulnerable to some level of risk associated with flooding. The effects of any given event will vary, however, depending on a range of factors, including antecedent conditions (such as soil moisture level and river flows), the location and magnitude of the rainfall event, the topography of the location, and the effectiveness of risk reduction measures including the lower Taieri Flood Protection Scheme and the East and West Taieri Drainage Schemes. The Taieri Plains may also be subject to other weather-related risks, earthquakes, and wildfire.

Section 3. Priorities for our Community

The Mosgiel Taieri Community Board has identified the following priorities for our community which we would like to see included in the Council's annual plan 2025/26 and long term plan 2025/2034. Our Community Plan is a living document that will be included on the agenda at each of our Community Board meetings to be amended and added to as required.

Priority 1. Gordon Road / SH87 Heavy Traffic By-Pass for Mosgiel

Time frame: 2024 to 2027 Feasibility Study.
2027 to 2030 Construction.

The need for a heavy transport by-pass for Mosgiel has been identified by the DCC for more than 20 years. The 2013 DCC Integrated Transport Strategy for Dunedin identified the need to separate the heavy transport using Gordon Road from the vulnerable population of Mosgiel characterised by school children and the elderly. The MTCB held a public meeting on this subject in 2023. This resulted in the DCC including the production of a feasibility study for a by-pass into their forward work plan and including this issue onto the Regional Land Transport Plan for the 2024/27 period. The Taieri remains the fastest growing region of Dunedin with continuing growth in housing and industrial activities. Currently there are an average of 540 heavy transport movements on Gordon Road every day, and this is set to continue growing with the growth and development of Mosgiel. It is essential that the DCC, the MTCB and the whole community keep the focus on getting the feasibility study completed and for the physical work to commence.

Priority 2. Cycleways / Walkways onto the Taieri and across the Taieri.

Time frame: 2024 to 2034 Funding and construction

The Mosgiel Taieri Community Board regards cycleways and walkways as essential to the future of our community and Dunedin City. Shared paths on the Taieri are important as a commuting option, recreational asset and tourist trail linking Dunedin to the thriving tourist market of Central Otago.

Priorities for the MTCB in the near future are:

- Stage one of the Tunnel Trail from Mosgiel to Green Island. (some work commenced)
- Stage one of the Taieri Trail from Mosgiel to Outram. (feasibility study complete)
- The extension of the Otago Central Rail Trail from Middlemarch through to the Taieri.
- The Outram Loop Track from Outram to the Glen via the Historic Park. (community project)

Priority 3. Flood Protection for the Taieri.

Time frame: 2024 to 2027 Maintenance of all ORC flood protection assets.
2024 to 2027 Upgrade of DCC stormwater pumps and network.

Flood protection for the Taieri is a key concern for many residents on the Taieri. It has become apparent from various reports obtained or released by the ORC that the flood protection assets including flood banks and river channels will not perform as intended in the event of an adverse weather event. The prime concerns are the reduced capacity of the Silverstream as a result of this channel not being maintained, the integrity of the flood banks protecting Outram and the flood banks protecting the lower Taieri including Dunedin Airport. The MTCB will continue its efforts to have

the ORC prioritise this work which will include informing the community on this matter. The MTCB will convene a public meeting during 2024 to this end.

The MTCB will continue to advocate for the upgrade of the stormwater network within Mosgiel to increase the ability for stormwater to be dealt with during times of heavy rainfall. This includes the planned upgrade of the stormwater pumps at Reid Avenue and Centre Street.

Priority 4. Pedestrian and road safety for Mosgiel and Outram.

Time frame: 2024 to 2034 Implementation

The Mosgiel Taieri Community Board will advocate for improvements to footpaths and crossings throughout Mosgiel and Outram, along with other safety improvements. Immediate priorities include:

- New pedestrian crossings on Bush Road and Factory Road.
- New pedestrian crossing on SH87, Holyhead Street, Outram
- New footpath on Church Street Mosgiel outside St Mary's School.
- New footpath on Mountford Street, Outram.
- Removal of bollards obstructing path between Doon and Wickliffe Street.
- Removal of redundant build outs on Factory Road.
- Reduction of the speed limit on Gordon Road between Ayr Street and Tyne Street.
- Increase of speed limit on Riccarton Road to 60 km/hr.
- Reduction of speed limit on Bush Road between Gladfield and Riccarton Road to 60 km/hr
- Reduction of the speed limit on Dukes Road between Gordon Road and Stedman Road to 60 km/hr.
- Relocating the transition from 50 km/hr to 100 km/hr further north of Outram to the other side of the Taieri River bridge.
- Introduction of a Barnes Dance at corner of Factory Road and Gordon Road.
- Introduction of rubbish bins on the Silverstream Esplanade and adjacent to bus stops in Mosgiel.

Priority 5. Memorial Park Destination Playground

Time frame: 2024 to 2027 Construction

The DCC has decided to establish three Destination Playgrounds for Dunedin, one of which is located within the Memorial Gardens, Mosgiel. A preliminary design has been released by the DCC for consultation. The preliminary design includes a significant skate park including a bowl and street skate area, along with other new play elements for children and young adults. The MTCB supports the preliminary design and the inclusion of a skate facility for the Memorial Park Destination Playground.

The MTCB will work closely with the DCC and the community advocating for the design and construction of this upgrade as a matter of urgency.

Priority 6. The extension of the Otago Central Rail Trail from Middlemarch to the Taieri.

Time frame: 2024 to 2025 Decision.

The DCC has advised that the future of the Taieri Gorge Railway will be decided following an exhaustive study into the best option for the city, and then public consultation. The Mosgiel Taieri Community Board has a view that the Taieri community and the Dunedin community might be better served by an extension of the highly successful Otago Central Walking and Cycle Trail through to the Taieri instead of the city continuing to operate a loss-making railway operation.

The reasons for this include:

- The continued trading losses being incurred by Dunedin Railways.
- The expenditure required in the short term to complete the essential repairs and maintenance to make the railway safe, estimated by the DCC to be at least \$20M but which could be far higher.
- The established economic benefits offered by the creation of a world class cycle and walking trail through the Taieri Gorge to Dunedin, for a fraction of the capital expense required to fix the railway.
- The unparalleled low-carbon, low-cost recreational asset provided to Dunedin ratepayers from a shared path.

Priority 7. Park and Ride Transport Hub.

Time Frame: 2024 to 2030 Implementation

The Mosgiel Taieri Community Board will advocate for the proposed Mosgiel Park and Ride facility to be built without delay. This facility is essential as many outlying communities such as Outram, Allanton and the Airport are not currently serviced by buses. This facility will give residents the option of driving to Mosgiel and then continuing their journey into Dunedin by bus and possibly train in the future.

Priority 8. Reinstate Dunedin International Flights Campaign.

Time frame: 2024 to 2027

The Mosgiel Taieri Community Board supports the Reinstate Dunedin International Flights Campaign launched by Taieri teenager, Benjamin Paterson. This will include participation in a working group set up to advocate for the reinstatement of international flights in and out of Dunedin alongside Benjamin, travel industry representatives and other influential parties.

Priority 9. Community Information Board.

Time frame: 2024 / 2025 Implementation

The Mosgiel Taieri Community Board will advocate for the installation, by the community, of a Community Information Board within the Gordon Road / Glasgow Street pocket park. The MTCB will talk to community service groups, some of whom have information boards elsewhere. The Board will investigate commercial sponsorship for the Information Board and also determine how the board will be managed and controlled.

Priority 10. Economic Growth on the Taieri

Time frame: 2024 to 2034

The Mosgiel Taieri Community Board notes the recent rapid uptake of industrial land around Dukes Road North bringing new industries and new employment opportunities to our area. There is now a shortage of large industrial lots which is restricting future opportunities.

The Board supports the further rezoning of land around Dukes Road North to Industrial to provide for the continued growth of new businesses for the benefit of all Dunedin. This area has numerous advantages over other sites being considered for industrial development in Dunedin:

- The area is flat, and construction is easy,
- The area is served by a rail head linking it directly to Port Otago.
- Providing the ORC maintains the Mill Creek diversion, the area is not prone to flooding and new builds can be regulated to mitigate flood interruption.
- The area is close to a major population base.
- The area is largely unproductive currently.

The Board recommends that the 15-hectare lot on Dukes Road North, owned by the DCC and already zoned industrial is released to the market without delay.

In the longer-term areas south and north of the existing Industrial area should be considered for rezoning, particularly the area north from Gordon Road and the existing Industrial developments along with the area in proximity of the rail head.

The establishment of a heavy transport by-pass linking this area to SH1 remains vital for the efficiency of transportation and the well-being of the community.

Priority 11. Residential Growth on the Taieri

Time frame: 2024 to 2034

While there is anxiety over the loss of traditional ¼ acre sections within inner Mosgiel, the community understands that in-fill housing developments are favoured by the council and appear to be favoured by buyers including first home buyers and downsizers.

The Board supports continued in-fill housing developments with the following recommendations:

- Restricted to inner-Mosgiel, close to amenities, green space and public transport.
- With urgency the DCC must improve the protection of special character homes and buildings with either special character zones or by updating its register of heritage buildings, or both. Mosgiel has several special character buildings within the in-fill zone which are not protected.
- Significant trees should be protected other than for the factors already identified by council.

The Taieri needs more quality housing to attract new families to our area from within Dunedin, within New Zealand, New Zealanders returning to Aotearoa, and new immigrants. A family of four moving to Dunedin adds to the prosperity of our city and contributes millions to the economy over several generations.

The Board supports careful development of quality subdivisions around Mosgiel and Outram with the following recommendations:

- All new developments must be away from areas that are likely to be flooded by the Taieri, Silverstream, Owhiro or Mill Creek.
- This favours the greenfield area currently semi-developed around Wingatui and some elevated sites. This area is largely unproductive at present with lot sizes that are uneconomic.
- In the longer term, elevated areas of East and West Taieri should be considered for future development.
- Infrastructure must be upgraded ahead of future demand, particularly stormwater drainage.

Section 4. Community Board Activities

The Mosgiel Taieri Community Board has identified the following activities that the Community Board will deliver to our community throughout the year. These activities will be undertaken and funded by the Community Board.

Activity 1. Community Engagement Plan.

The MTCB will engage with the constituents, service groups, business and organisations throughout the Mosgiel Taieri community to impart information that may be important to them, and to seek feedback on issues that concern the Board and the councils. This will be achieved by various initiatives, including:

- Engagement via Social Media channels.
- Printed MTCB newsletters and brochures.
- Distribution of supplied material from councils and agencies.
- Public meetings.
- Participation in meetings arranged by both councils.
- Participation in the Otago Taieri A and P show.
- Participation in the Party in the Park community event.

Activity 2. Community Response Plan.

The DCC and the MTCB has a statutory role under the Civil Defence Emergency Management Act to respond in the event of a civil emergency occurring within our community. The Mosgiel Taieri Community Board has a responsibility to interface between the DCC, the Mosgiel Taieri Community Response Group and Otago Civil Defence Emergency Management.

The MTCB will continue to support the MTCRG to produce and manage an effective Community Response Plan for all Taieri communities.

Activity 3. Liaison with the Taieri Network.

The MTCB will liaise closely with the DCC funded place-based group, The Taieri Network on matters of community interest and community benefit. The principal objective will be to ensure that both entities work together to deliver the best outcome for our community and the DCC.

Activity 4. Coronation Hall Trust.

The MTCB will continue to have input into the Coronation Hall to ensure that this community facility is being used appropriately and with benefit to the community.

Activity 5. Taieri Trails Group.

The MTCB will participate on the Taieri Trails Group to establish an off-road cycling and walking trail between Mosgiel and Outram, and then between Outram and Waihola.

Activity 6. Otago Central Rail Trail – Taieri Gorge Working Party

The MTCB is part of the OCRT working group which is responding to a motion of council asking for a feasibility and economic benefit study into the extension of the Otago Central Rail Trail from Middlemarch through to North Taieri via the Taieri Gorge Rail Corridor which is currently leased by the DCC from KiwiRail.

To date the Economic Benefit study prepared by renowned regional economist, Mr Benje Patterson, has been presented to the council. The feasibility study including the full cost of establishing the cycleway and walkway extension will be available by mid-2024.

Section 5. Plans

The Mosgiel Taieri Community Board has plans to support its activities and requirements. These plans are set out below.

5.1 Civil Defence Emergency Management Community Response Plan

In conjunction with the Mosgiel Taieri Community Response Group, the Mosgiel Taieri Community Board has contributed to the development of a Community Response Plan for the Taieri community.

This is an extensive plan which will be used in the event of a Civil Defence Emergency including flooding, earthquake, and wildfire.

This plan can be viewed at [https:// xxx](https://xxx)

5.2 Community Engagement Plan

Members of the community are invited to make a comment on the Mosgiel Taieri Community Board Community Plan at any time. You may have a view on the Board's priorities and actions. You may want to ask the Board to assist with an issue involving the DCC or the ORC. You are encouraged to have input into the Community Plan and work of the Mosgiel Taieri Community Board.

There are many ways that members of the community can do this:

- Verbally by contacting a board member directly using the contact details provided.
- Write to the board at the address below.
- In person at community events, public meetings or by presenting at the Public Forum section of a scheduled Board meeting.

Please send written communication to:

The Chairperson
Mosgiel Taieri Community Board
c/o Dunedin City Council
P O Box 5045
Dunedin 9058

Or by email to asimms@andrewsimms.co.nz or governance.support@dcc.govt.nz

Section 6. Community Board Meeting Schedule 2025

The Mosgiel Taieri Community Board meets regularly. Unless otherwise notified all Board meetings are held at the Downes Room, Mosgiel Public Library, Hartstonge Avenue, Mosgiel commencing at 5:30PM.

Wednesday 5 February, 2025

Wednesday 2 April, 2025

Wednesday 21 May, 2025

Wednesday 6 August, 2025

Wednesday 10 September, 2025

Wednesday 5 November, 2025 (Inaugural meeting)

(Venue and time to be confirmed)

COUNCILLOR'S UPDATE

Councillor Cherry Lucas will provide an update on matters of interest.

Attachments

There are no attachments for this report.

ITEMS FOR CONSIDERATION BY THE CHAIR

Any items for consideration by the Chair.

Attachments

There are no attachments for this report.