

Notice of Meeting:

I hereby give notice that an ordinary meeting of the Otago Peninsula Community Board will be held on:

Date: Thursday 22 May 2025
Time: 10:00 am
Venue: Portobello Bowling Club, Sherwood Street, Portobello

Sandy Graham
Chief Executive Officer

Otago Peninsula Community Board
PUBLIC AGENDA

MEMBERSHIP

Chairperson	Paul Pope	
Deputy Chairperson	Hoani Langsbury	
Members	Lox Kellas	Stacey Kokaua-Balfour
	Cheryl Neill	Edna Stevenson
	Cr Andrew Whiley	
Senior Officer	Jeanine Benson, Group Manager Transport	
Governance Support Officer	Rebecca Murray	

Rebecca Murray
Governance Support Officer

Telephone: 03 477 4000
governance.support@dcc.govt.nz
www.dunedin.govt.nz

Note: Reports and recommendations contained in this agenda are not to be considered as Council policy until adopted.

ITEM	TABLE OF CONTENTS	PAGE
1	Public Forum	4
1.1	Save the Otago Peninsula (STOP) Inc Society	4
2	Apologies	4
3	Confirmation of Agenda	4
4	Declaration of Interest	5
5	Confirmation of Minutes	10
5.1	Otago Peninsula Community Board meeting - 3 April 2025	11
PART A REPORTS (Otago Peninsula Community Board has power to decide these matters)		
6	Governance Support Officer's Report	17
7	Project Fund - Funding Applications	49
8	Project Fund - Youth Scholarship 2024/25	79
9	Community Plan 2025-2026	83
10	Board Updates and Report Backs	84
11	Councillor Update	94
12	Chairperson's Report	95
13	Items for Consideration by the Chair	96

1 PUBLIC FORUM

1.1 Save the Otago Peninsula (STOP) Inc Society

Duncan Ross wishes to speak on behalf of the Save the Otago Peninsula (STOP) Inc Society funding application

2 APOLOGIES

An apology has been received from Hoani Langsbury.

That the Board:

Accepts the apology from Hoani Langsbury.

3 CONFIRMATION OF AGENDA

Note: Any additions must be approved by resolution with an explanation as to why they cannot be delayed until a future meeting.

DECLARATION OF INTEREST

EXECUTIVE SUMMARY

1. Members are reminded of the need to stand aside from decision-making when a conflict arises between their role as an elected representative and any private or other external interest they might have.
2. Elected members are reminded to update their register of interests as soon as practicable, including amending the register at this meeting if necessary.

RECOMMENDATIONS

That the Board:

- a) **Notes/Amends** if necessary the Elected Members' Interest Register attached as Attachment A; and
- b) **Confirms/Amends** the proposed management plan for Elected Members' Interests.

Attachments

	Title	Page
A	Otago Peninsula Community Board Register of Interest	6

Otago Peninsula Community Board Register of Interest - May 2025					
Name	Date of Entry	Responsibility (ie: Chairperson etc)	Declaration of Interests	Nature of Potential Interest	Proposed Management Plan
Paul Pope (Chairperson)	31/10/2024	Board Chairperson/Director	Spiralis Ltd	No conflict identified.	Withdraw from discussion and leave the table if a conflict of interest is identified. Seek advice on actual or potential conflicts of interest prior to the meeting.
		Owner	Residential Property, Portobello	No conflict identified.	Withdraw from discussion and leave the table if a conflict of interest is identified. Seek advice on actual or potential conflicts of interest prior to the meeting.
		OPCB representative	Portobello Hall (liaison)	No conflict identified.	Withdraw from discussion and leave the table if a conflict of interest is identified. Seek advice on actual or potential conflicts of interest prior to the meeting.
		Project Manager	Te Runanga o Ōtakou	No conflict identified.	Withdraw from discussion and leave the table if a conflict of interest is identified. Seek advice on actual or potential conflicts of interest prior to the meeting.
Hoani Langsbury (Deputy Chairperson)		Manager	Otago Peninsula Trust	No conflict identified.	Withdraw from discussion and leave the table if a conflict of interest is identified. Seek advice on actual or potential conflicts of interest prior to the meeting.
		Deputy Chairperson	Dark Skies Advisory Group	No conflict identified.	Withdraw from discussion and leave the table if a conflict of interest is identified. Seek advice on actual or potential conflicts of interest prior to the meeting.
		Trustee	Yellow-eyed Penguin Trust	No conflict identified.	Withdraw from discussion and leave the table if a conflict of interest is identified. Seek advice on actual or potential conflicts of interest prior to the meeting.
		Trustee	Otago Peninsula Biodiversity Group	No conflict identified.	Withdraw from discussion and leave the table if a conflict of interest is identified. Seek advice on actual or potential conflicts of interest prior to the meeting.
		External Issues Komiti	Te Runanga o Otakou	No conflict identified.	Withdraw from discussion and leave the table if a conflict of interest is identified. Seek advice on actual or potential conflicts of interest prior to the meeting.
		TBA	Te Runanga o Otakou-Tangata Tiaki	No conflict identified.	Withdraw from discussion and leave the table if a conflict of interest is identified. Seek advice on actual or potential conflicts of interest prior to the meeting.
		Otakou Alternate	Te Runanga o Ngai Tahu	No conflict identified.	Withdraw from discussion and leave the table if a conflict of interest is identified. Seek advice on actual or potential conflicts of interest prior to the meeting.
		Member	DoC Te Roopu Kaitiaki	No conflict identified.	Withdraw from discussion and leave the table if a conflict of interest is identified. Seek advice on actual or potential conflicts of interest prior to the meeting.
		Committee Member	Ariki Athletics Club	No conflict identified.	Withdraw from discussion and leave the table if a conflict of interest is identified. Seek advice on actual or potential conflicts of interest prior to the meeting.
		Member	Port Otago Technical Committee	No conflict identified.	Withdraw from discussion and leave the table if a conflict of interest is identified. Seek advice on actual or potential conflicts of interest prior to the meeting.

Hoani Langsbury (Deputy Chairperson) (cont)	24/09/2020	RMA Commissioner	Environment Canterbury	No conflict identified.	Withdraw from discussion and leave the table if a conflict of interest is identified. Seek advice on actual or potential conflicts of interest prior to the meeting.
		Trustee	Predator Free Dunedin	No conflict identified.	Withdraw from discussion and leave the table if a conflict of interest is identified. Seek advice on actual or potential conflicts of interest prior to the meeting.
		Chairperson	Peninsula Biodiversity Trust	No conflict identified.	Withdraw from discussion and leave the table if a conflict of interest is identified. Seek advice on actual or potential conflicts of interest prior to the meeting.
	15/04/2021	Trustee	Wild Dunedin	No conflict identified.	Withdraw from discussion and leave the table if a conflict of interest is identified. Seek advice on actual or potential conflicts of interest prior to the meeting.
		Member	Technical Advisory Group to the New Zealand Battery Project	No conflict identified.	Withdraw from discussion and leave the table if a conflict of interest is identified. Seek advice on actual or potential conflicts of interest prior to the meeting.
		OPCB representative	Wellers Rock and Wellers Jetty project	No conflict identified.	Withdraw from discussion and leave the table if a conflict of interest is identified. Seek advice on actual or potential conflicts of interest prior to the meeting.
	14/10/2021	Panel Member	Dunedin Hospital Build	No conflict identified.	Withdraw from discussion and leave the table if a conflict of interest is identified. Seek advice on actual or potential conflicts of interest prior to the meeting.
	24/08/2023	Member	Site Led Committee - Otago Regional Council	No conflict identified.	Withdraw from discussion and leave the table if a conflict of interest is identified. Seek advice on actual or potential conflicts of interest prior to the meeting.
	9/02/2024	Member	Future Development Strategy Hearing Panel	No conflict identified.	Withdraw from discussion and leave the table if a conflict of interest is identified. Seek advice on actual or potential conflicts of interest prior to the meeting.
	3/04/2025	Independent Commissioner	DCC Reserve Management Plans	No conflict identified.	Withdraw from discussion and leave the table if a conflict of interest is identified. Seek advice on actual or potential conflicts of interest prior to the meeting.
	24/08/2023	Committee Member	ORC Regional Leadership Committee	No conflict identified.	Withdraw from discussion and leave the table if a conflict of interest is identified. Seek advice on actual or potential conflicts of interest prior to the meeting.
Lox Kellas	04/11/2022	Life Member	Dunedin RSA	No conflict identified.	Withdraw from discussion and leave the table if a conflict of interest is identified. Seek advice on actual or potential conflicts of interest prior to the meeting.
	2/02/2023	District President Otago Southland	Otago Southland Returned Services Association	No conflict identified.	Withdraw from discussion and leave the table if a conflict of interest is identified. Seek advice on actual or potential conflicts of interest prior to the meeting.
		Member	Otago Southland Returned Services Association	No conflict identified.	Withdraw from discussion and leave the table if a conflict of interest is identified. Seek advice on actual or potential conflicts of interest prior to the meeting.
	31/10/2024	Chair	Dunedin RSA Welfare Trust	No conflict identified.	Withdraw from discussion and leave the table if a conflict of interest is identified. Seek advice on actual or potential conflicts of interest prior to the meeting.
	4/11/2022	Life Member	Coastguard Dunedin	Possible conflict if group applies for funding.	Withdraw from discussion and leave the table if a conflict of interest is identified. Seek advice on actual or potential conflicts of interest prior to the meeting.

Stacey Kokaua-Balfour		Member	Portobello School Board	No conflict identified.	Withdraw from discussion and leave the table if a conflict of interest is identified. Seek advice on actual or potential conflicts of interest prior to the meeting.
	10/10/2024	Member	External Pacific Advisory Committee for Otago Polytechnic (te Pūkenga)	No conflict identified.	Withdraw from discussion and leave the table if a conflict of interest is identified. Seek advice on actual or potential conflicts of interest prior to the meeting.
	9/02/2024	Board Member	Pacific Trust Otago	No conflict identified.	Withdraw from discussion and leave the table if a conflict of interest is identified. Seek advice on actual or potential conflicts of interest prior to the meeting.
	22/06/2023	Member	Te Vaka Cook Islands of Dunedin Incorporated	No conflict identified.	Withdraw from discussion and leave the table if a conflict of interest is identified. Seek advice on actual or potential conflicts of interest prior to the meeting.
Cheryl Neill		Teacher	Portobello School	No conflict identified.	Withdraw from discussion and leave the table if a conflict of interest is identified. Seek advice on actual or potential conflicts of interest prior to the meeting.
		OPCB representative	Harwood Hall (liaison)	No conflict identified.	Withdraw from discussion and leave the table if a conflict of interest is identified. Seek advice on actual or potential conflicts of interest prior to the meeting.
		Member	Portobello Bowling Club	Possible conflict if group applies for funding.	Withdraw from discussion and leave the table if a conflict of interest is identified. Seek advice on actual or potential conflicts of interest prior to the meeting.
Edna Stevenson	24/09/2020	President	Portobello Library	Possible conflict if group applies for funding.	Withdraw from discussion and leave the table if a conflict of interest is identified. Seek advice on actual or potential conflicts of interest prior to the meeting.
	22/06/2023	Club Captain	Portobello Bowling Club	Possible conflict if group applies for funding.	Withdraw from discussion and leave the table if a conflict of interest is identified. Seek advice on actual or potential conflicts of interest prior to the meeting.
Cr Andrew Whiley	17/11/2016	Owner/Operator	Whiley Golf Inc and New Zealand Golf Travel Ltd	No conflict identified	Seek advice prior to the meeting if actual or perceived conflict of interest arises.
		Director/Shareholder 22 May 2017	Estate of Grace Limited	No conflict identified	Seek advice prior to the meeting if actual or perceived conflict of interest arises.
		Trustee	Japek (Family Trust) - Property Ownership - Dunedin	Duties to Trust may conflict with duties of Council Office.	Seek advice prior to the meeting if actual or perceived conflict of interest arises.
		Member	Otago Golf Club	No conflict identified	Seek advice prior to the meeting if actual or perceived conflict of interest arises.
		Member	Dunedin South Rotary Club	No conflict identified	Seek advice prior to the meeting if actual or perceived conflict of interest arises.
		Member	Institute of Directors	No conflict identified	Seek advice prior to the meeting if actual or perceived conflict of interest arises.
		Member	National Party	No conflict identified	Seek advice prior to the meeting if actual or perceived conflict of interest arises.

Cr Andrew Whiley (cont)		Board Chair	Volunteer South	No conflict identified	Seek advice prior to the meeting if actual or perceived conflict of interest arises.
		Member	New Zealand PGA (Professional Golf Association)	No conflict identified	Seek advice prior to the meeting if actual or perceived conflict of interest arises.
		Chair	Dunedin Community House Executive Committee	Potential grants recipient	Seek advice prior to the meeting if actual or perceived conflict of interest arises.
		Member	Otago Property Investors Association	No conflict identified	Seek advice prior to the meeting if actual or perceived conflict of interest arises.
		Member	Hereweka Harbour Cone Trust (Council Appointment)	No conflict Identified	Seek advice prior to the meeting if actual or perceived conflict of interest arises.
		Member	Otago Peninsula Community Board (Council Appointment)	No conflict identified	Seek advice prior to the meeting if actual or perceived conflict of interest arises.
		Member	Dunedin Shanghai Association (Sister City Society) (Council Appointment)	No conflict identified	Seek advice prior to the meeting if actual or perceived conflict of interest arises.
		Member	Grow Dunedin Partnership (Council Appointment)	No conflict identified	Seek advice prior to the meeting if actual or perceived conflict of interest arises.
		Member	NZ Masters Games Trust Board (Council Appointment)	No conflict identified	Seek advice prior to the meeting if actual or perceived conflict of interest arises.
		Member	Ice Sports Dunedin Incorporated (Council Appointment)	No conflict identified	Seek advice prior to the meeting if actual or perceived conflict of interest arises.
		Member	Puketai Residential Centre Liaison Committee (Council Appointment)	No conflict identified	Seek advice prior to the meeting if actual or perceived conflict of interest arises.
		Board Member	Dunedin Christmas Charitable Trust	No conflict identified	Seek advice prior to the meeting if actual or perceived conflict of interest arises.

CONFIRMATION OF MINUTES

OTAGO PENINSULA COMMUNITY BOARD MEETING - 3 APRIL 2025

RECOMMENDATIONS

That the Board:

- a) **Confirms** the minutes of the Otago Peninsula Community Board meeting held on 03 April 2025 as a correct record.

Attachments

	Title	Page
A↓	Minutes of Otago Peninsula Community Board meeting held on 3 April 2025	11

Otago Peninsula Community Board

MINUTES

Minutes of an ordinary meeting of the Otago Peninsula Community Board held in the Portobello Bowling Club, Sherwood Street, Portobello on Thursday 03 April 2025, commencing at 10:00 a.m.

PRESENT

Chairperson	Paul Pope	
Deputy Chairperson	Hoani Langsbury	
Members	Lox Kellas	Stacey Kokaua-Balfour
	Cheryl Neill	Edna Stevenson

IN ATTENDANCE Jeanine Benson, Manager Transport (Senior Officer)

Governance Support Officer Lauren Riddle

Cheryl Neill provided an opening reflection and referenced an article on the history of the peninsula cycleway and the importance of the community to submit to the DCC 9 Year Plan 2025-2034 in support of the completion of the unfinished section from Portobello to Harington Point.

1 PUBLIC FORUM

1.1 Public Forum

Cheryl Neill spoke in support of the Portobello School's funding application of \$1,000 to support the replacement of the cover for the school/community swimming pool. She advised that the cover had deteriorated badly and was unable to be used.

2 APOLOGIES

Moved (Paul Pope/ Lox Kellas):

That the Board:

Accepts the apology from Cr Whiley for absence.

Motion carried.

3 CONFIRMATION OF AGENDA

Moved (Paul Pope/ Edna Stevenson):

That the Board:

Confirms the agenda without addition or alteration.

Motion carried.

4 DECLARATIONS OF INTEREST

Members were reminded of the need to stand aside from decision-making when a conflict arose between their role as an elected representative and any private or other external interest they might have.

Paul Pope – no longer Project Manager for Te Rūnaga o Ōtākou

Hoani Langsbury – is an Independent Commissioner for DCC Reserve Management Plans

Moved (Paul Pope/ Lox Kellas):

That the Board:

- a) **Amends** the Elected Members' Interest Register; and
- b) **Amends** the proposed management plan for Elected Members' Interests.

Motion carried.

5 CONFIRMATION OF MINUTES

5.1 OTAGO PENINSULA COMMUNITY BOARD MEETING - 4 FEBRUARY 2025

Moved (Paul Pope/ Lox Kellas):

That the Board:

Confirms the public part of the minutes of the Otago Peninsula Community Board meeting held on 04 February 2025 as a correct record.

Motion carried (OPCB/2025/003)

PART A REPORTS

6 GOVERNANCE SUPPORT OFFICER'S REPORT

The Civic report provided an update of activities relevant to the Board area.

Transport

A verbal update was provided by Jeanine Benson (Group Manager Transport) on transport matters relating to the peninsula area, including the capital and operation budget presented to the Council 9 Year Plan meeting for inclusion in the 9 Year Plan 2025-34 consultation document.

Ms Benson responded to questions from the Board.

ANZAC Day services

Hoani Langsbury agreed to represent the Board at the Portobello ANZAC Day service in Paul's absence.

Stacey Kokaua agreed to attend the Macandrew Bay service with Edna Stevenson.

Tomahawk Lagoon update

Tom Dyer, ORC General Manager Science and Resilience provided the Board with an update on the progress for investigations into long term improvements to the Tomahawk Lagoon for flood resilience capacity. Concept design plans were tabled for the Board's information

Mr Dyer responded to questions from the Board.

Moved (Paul Pope/Cheryl Neill):

That the Board:

- a) **Notes** the Governance Support Officer's Report.
- b) **Approves** payment for the additional ANZAC wreath for the Macandrew Bay service.

Motion carried (OPCB/2025/004)

Discussion was held on the Board's preparation for submissions to the DCC 9 Year Plan, the DCC Local Water Done Well plan and the ORC Regional Public Transport Plan with the Board

Members agreed for the Chair and Deputy Chair to represent the Board at the public hearings for the DCC 9 Year Plan and DCC Local Water Done Well, on Wednesday 7 May at 9:15 a.m.

Moved (Paul Pope/ Hoani Langsbury):

That the Board:

- b) **Agrees** to submit to the DCC 9 Year Plan 2025-2034.
- c) **Agrees** to submit to the DCC Local Water Done Well.
- d) **Agrees** to submit to the ORC Regional Public Transport Plan.
- e) **Agrees** for the Board Chairperson to prepare the submissions on the Board's behalf.
- f) **Agrees** for the Board Chair and Deputy Chair to present the submission on behalf of the OPCB to the public hearings in May 2025.

Motion carried (OPCB/2025/005)

7 PROJECT FUND - FUNDING APPLICATIONS

The balance of the Project Fund, available for allocation for the current financial year (2024-2025) was noted as \$5,400. It was noted that this included the \$1,000 held in reserve for the Board's annual youth scholarship.

A funding application from the Portobello School for \$1,000 sought the Board's consideration to assist with the purchase of a new cover for the community swimming pool.

Cheryl Neill and Stacey Kokaua-Balfour declared a conflict of interest and sat back from the item.

Moved (Member Lox Kellas/Member Edna Stevenson):

That the Board:

- a) **Grants** \$1,000 to the Portobello School to contribute towards the purchase of a new cover for the community swimming pool.

.Motion carried (OPCB/2025/006) with Cheryl Neill and Stacey Kokaua-Balfour abstained from voting.

A Project completion report form was received from the Caselberg Trust reporting on the use of the grant from the Board in 5 September 2024, for installation of double glazing to the windows at the Caselberg Trust Artist's residence.

Moved (Lox Kellas/ Edna Stevenson):

That the Board:

- b) **Acknowledges** receipt of the project completion report from The Caselburg Trust for the installation of double-glazing windows at the Caselburg Trust Artist's residence.
- c) **Notes** the Project Fund Report

Motion carried (OPCB/2025/007)

8 COMMUNITY PLAN 2025-2026

Discussion was held on updates to the 2024-2025 Community Plan, for section 5.1 Emergency Response of the Plan to reflect the role of the Board and the importance of community resilience groups.

Paul Pope confirmed the Board's top priorities remained as set out in the Community Plan and would form the basis of the submissions to the DCC 9YP.

9 OTAGO PENINSULA COMMUNITY BOARD YOUTH SCHOLARSHIP 2024-2025

Stacey Kokaua advised that two youth scholarship applications had been received to date but had been returned to the applicants, as they were incomplete. No completed applications have been received to date.

The Board supported promotion of the scholarship through the Board's Facebook page to encourage applications prior to the 30 April cut off.

10 BOARD UPDATES AND REPORT BACKS

Board Members provided verbal updates and report backs on portfolios and activities including:

Harwood (and Lower Peninsula) – Cheryl Neill confirmed surveillance cameras have been installed at the Hoopers Inlet recycling centre. She advised that there had been an increase of freedom campers at Harwood and community report of use of the public toilet facilities at Scott Hall for the dumping of waste from campervans.

Peninsula Roads – Lox Kellas advised the condition of the roads as good with recent gravel and grading completed.

Back Bays (and Highcliff) – Lox Kellas advised that the Pukehiki Hall community group had received funding from the Dunedin Heritage Fund for external work on the frontage of the hall.

Portobello – Stacey Kokaua advised that as requested by the Board she had made contact with Portobello Inc to see if there was interest in the group leading/advancing the use of part of the A & P domain as a dog park area. She advised that group were interested in progressing the idea.

Lox Kellas advised the Board of the upcoming retirement of local GP, Dr Peter Cooke.

The Board agreed that the Chairperson send a letter to Dr Cooke to recognise his service to the community since 1983.

Harington Point/Otakou – Hoani Langsbury raised the issue of improved signage needed at Te Rauone beach for awareness of the presence of wildlife as they have been reports of negative interactions by people and dogs with sea lions on the beach.

Paul Pope (as Chair) will write to the Department of Conservation about the improved signage at Te Rauone beach.

Moved (Paul Pope/ Lox Kellas):

That the Board:

- a) **Notes** the Board updates.

Motion carried.

11 COUNCILLOR UPDATE

There was no Councillor's update provided due to the apology for absence from Cr Whiley.

12 CHAIRPERSON'S REPORT

The Chairperson provided a verbal update on matters of interest including:

- Contractors have commenced maintenance work on the overgrown horticultural plantings along Portobello Road.
- Wellers Street – road alignment work underway.
- Install of the speed hump at Tomahawk has been completed by the Transport team.

Moved (Paul Pope/ Hoani Langsbury):

That the Board:

Notes the Chairperson's report.

Motion carried.

13 ITEMS FOR CONSIDERATION BY THE CHAIR

There were no items for consideration by the Chair.

The meeting concluded at 12:01 p.m.

.....
CHAIRPERSON

PART A REPORTS

GOVERNANCE SUPPORT OFFICER'S REPORT

Department: Civic

EXECUTIVE SUMMARY

- 1 This report is to inform the Otago Peninsula Community Board of activities relevant to the Board area including:
 - a) Project Fund balance
 - b) Correspondence
 - c) Transport Update
 - d) Submissions to the draft DCC 9 year plan and Local Water Done Well and ORC Regional Public Transport Plan
 - e) Electionsnz.com – Elected Members protocol session
 - f) DCC currently consulting on
 - g) Roadworks Schedule
 - h) Dunedin City Council updates

RECOMMENDATIONS

That the Board:

- a) **Notes** the Governance Support Officer's Report.
- b) **Ratifies** the Board's submission to the DCC 9 year plan 2025-2034 and DCC Local Water Done Well retrospectively.
- c) **Ratifies** the Board's submission to the ORC Regional Public Transport Plan retrospectively.

Project Fund

- 2 The balance of the Project Fund available for allocation for the current financial year (2024-2025) is \$3,440.

Correspondence

- 3 IN: Thank you letter from Portobello School for Board grant.
- 4 OUT: OPCB letter to Dr Peter Cooke.
OPCB letter to Dept of Conservation regarding sea lion management.

Transport Update

- 5 A verbal update will be provided by Jeanine Benson, Manager Transport on transport matters within the community board area, including speed limit reversal (see attachments), road access maintenance at Tomahawk Beach, Tomahawk judder bars and flooding issue at the bus stop in Macandrew Bay (next to the War Memorial Hall).

Submissions to draft DCC 9 year plan 2025-2034 and ORC Regional Public Transport Plan

- 6 The draft DCC 9 year plan 2025-2034 and Local Water Done Well and ORC Regional Public Transport Plan submissions are attached for ratifying.

Elected Members Elections protocol session

- 7 Reminder to Board members that Warwick Lamp from Electionsnz.com will be running an Elections protocol session useful for elected members who may be seeking re-election and balancing between being an elected member and a candidate.

What DCC is Currently Consulting On

- 8 For the most up to date information on what DCC is consulting on, please visit <https://www.dunedin.govt.nz/council/currently-consulting-on>

Roadworks Schedule

- 9 Information on current notified road closures and the roadworks schedule (a weekly list of programmed works) for Council's maintained roads is available on the DCC website via these links <https://www.dunedin.govt.nz/news-and-events/public-notice/roadworks-schedule> and <https://www.dunedin.govt.nz/news-and-events/public-notice/notified-road-closures>.

Dunedin City Council Updates

Board or members of the public wishing to advise Council of any operational issues or concerns, e.g., potholes, vegetation, burst pipes are reminded to contact the Dunedin City Council Customer Services Agency on 03 477 4000 or email dcc@dcc.govt.nz. Remember to retain the job number allocated to request for future reference.

For any non-urgent matter please contact council via the online "Fix it form" <https://www.dunedin.govt.nz/do-it-online/report/fix-it-form>

- 10 If issues and concerns are not dealt with in a timely manner, Board Members should contact the Governance Support Officer, or the Senior Staff Member appointed to the Board.

Signatories

Author:	Lauren Riddle - Governance Support Officer
---------	--

Attachments

	Title	Page
↓A	Corres - Thank you letter from Portobello School for Board grant	20
↓B	Corres - Letter to Department of Conservation regarding sea lion management	21
↓C	Corres - Letter to Dr Peter Cooke	22
↓D	OPCB submission to draft DCC 9 year plan 2025-2034	23
↓E	OPCB submission to ORC Regional Public Transport Plan	25
↓F	Speed Limit Reversal List To Be Submitted Under The Setting Of Speed Limits Rule 2024 Report to Council 30 April 2025	40
↓G	Speed Limit Reversal List To Be Submitted Under The Setting Of Speed Limits Rule 2024 Minute Extract from Council 30 April 2025	48



Monday 12th May 2025

Dear Paul and the Otago Peninsula Community Board,

I would like to thank you very much for the \$1000.00 donation we recently received from you for the community and school pool cover. We managed to get quite a few extra years out of the current one but alas it has now past its use by date.

Your ongoing support for our school and the pool is greatly appreciated.



Kā mihi nui

Tom Hobbs
Principal Portobello School



**OTAGO PENINSULA
COMMUNITY BOARD**

50 The Octagon | Dunedin 9015 | PO Box 5045 | Dunedin 9054 | New Zealand
E dcc@dcc.govt.nz P +64 3 477 4000 www.dunedin.govt.nz

22 April 2025

Department of Conservation
Level 1 John Wickliffe House
265 Princes Street
Dunedin 9016
PO Box 5244
Dunedin 9054

Kia ora Gabe

I'm writing to you wearing another "potae" as the Chairman of the Otago Peninsula Community Board.

Firstly, I wanted to pass on my thanks and best wishes to Jim Fyfe as he retires from the Department. I've known Jim for over 30 years and have had the pleasure of working with him on a variety of projects over the years. His service and dedication have always been inspirational and he will be a significant loss to the city.

At our recent Board meeting the issues of sea lion management was discussed, and in particular the long-term planning around habitat, traffic and protection.

The Board and the community have been well served by the Dunedin City Council in a number of areas, but as with anything related to conservation there is a limit to the resources that are often available. The Board asked me to write to you and ask:

- What is the long strategic and financial plan for sea lion management in the short to mid-term?
- Is there a role for the Board to be more vocal advocates to ensure that the Department are more adequately resourced to cover a wider scope of work that deals with this endangered species?
- How does the species strategy and funding coincide?
-

I'd make it quite clear that the Board are greatly supportive of conservation efforts for sea lions, but from an outside organisation looking in sometimes the response looks reactive rather than planned. Please don't take that as a criticism, but rather as an organisation wanted to be informed and to offer our assistance.

I look forward to hearing from you and discussing further.



Paul Pope
Chairman Otago Peninsula Community Board.



**OTAGO PENINSULA
COMMUNITY BOARD**

50 The Octagon | Dunedin 9015 | PO Box 5045 | Dunedin 9058 | New Zealand
E dec@dcc.govt.nz P +64 3 477 4000 www.dunedin.govt.nz

16 April 2025

Otago Peninsula Medical Centre
12 Allans Beach Road,
Portobello,
Dunedin

Attention: Dr Peter Cooke

Kia ora Peter

I wanted to pass on the best wishes of the Otago Peninsula Community Board at the announcement of your retirement from the Otago Peninsula practice.

After serving the community for 43 years your contribution to the community and its residents has been outstanding. I could imagine that you have plenty of horticultural plans made for the future and I can't imagine you will be resting on your laurels!

Once again on behalf of the Otago Peninsula Community Board our thanks for your dedication to the care of the people of our community.

Enjoy your retirement, your whanau and your garden.

Ka mihi

Paul Pope
Chairman Otago Peninsula Community Board

Te Awa Ōtākou/Peninsula Connection Portobello/Harington Pt Rd Safety Improvement Project

Project Overview

- designed to deliver significant safety improvements for all users - drivers, pedestrians, cyclists, travelling from Vauxhall to the base of Taiaroa Head
- already delivered significant citywide environmental, cultural, social, economic benefits
- community led safety project from 2002, championed by the Otago Peninsula Community Board (OPCB) for 20 years, with the pivotal support of mana whenua through the resource consent process
- promise made by DCC in 2014/15 to the community, including to mana whenua, that the project would be completed
- funding issues for final three sections have prevented its completion - doesn't fit Waka Kotahi criteria eg excludes tourism, unsuccessful in securing government eg 'shovel ready' funding
- increasing safety issues for the final three sections - increasing impact of climate change, increasing risk of accidents, negative impact on visitor economy.

NB Boardwalk not part of this - funding has been secured and construction is to start mid 2025 onwards

Updates

The strong, consistent message to complete the project, conveyed in submissions to the 2024/25 Annual Plan, had a huge impact. The wider community stood side by side with mana whenua in a unified approach which made a considerable impression on Council decision-makers and brought those unfamiliar with the project's history up to speed. As a result of those submissions, Council formally asked staff for further detailed work to be carried out and a report written. In 2024 community advocates made submissions to the Regional Land Transport Plan (RLTP) and Council's Future Development Strategy (FDS). Significantly, in 2024 mana whenua graciously gifted the name Te Awa Ōtākou (The Ocean River) to the Peninsula side of the shared path around the harbour.

Significant Milestone

A milestone was reached very recently on 29 January 2025 when Council considered the requested staff report. The report included the history of the project, updated costs of \$18.5 million, a priority order and how to achieve cost efficiencies by tendering the work as a continuous package. Council voted 9:6 to include the completion of the project in Years 2,3,4 of its Long Term Plan (LTP) budgets. The consultation document will soon go out for community consultation as part of the LTP process.

Priority Order

NB each year spans 1st July - 30th June

1. Ellison Rd to Ōtākou Fisheries Wharf Yr 2 2026/27

- most dangerous section of road
- increasing impact of sea level rise/storm events
- only access for community/marae, globally significant visitor attraction/s, endangered species which are critical to city's status as the Wildlife Capital of NZ & visitor economy

2. Tidewater Dr to Ellison Rd Yr 3 2027/28

- susceptible to flooding
- straight forward construction

3. Portobello to Weir Rd (landward option) Yr 4 2028/29

- more complex, so in Yrs 2 & 3 preparation will be carried out for construction in Yr 4
- landward option preferred - this will mean safer access for school students, less complex construction and more cost effective than seaward option.

PTO

Make a Submission to Dunedin City Council's Long Term Plan

We need the community to come out *in force* one last time and make submissions to Council's Long Term Plan and for some of you to speak at the hearings.

We need you to make a submission to www.dcc.govt.nz (**click on the link on the home page from the 31 March when submissions open**)

Key Points/Tips for your Submission

- the Te Awa Ōtākou/Peninsula Connection must be completed in **Yrs 2,3,4** (*key point*)
- in the priority order as above
- what you think are the benefits of completing the project/what you've enjoyed about the finished sections of the Peninsula Connection
- note that it's a great decision by Council - it keeps a promise to the community, finishes what was started, invests in a world class asset for the *whole* city
- thank Council staff (*their work made a significant difference to get the project this far*)
- write your submission in your own words, short and to the point (*remember councillors have hundreds of submissions to read!*).

The LTP Process from here:

- submissions open 31 March - **close NOON 30 April 2025**
- hearings 6-8 May 2025
- Council deliberations 26-29 May 2025
- Council adoption of LTP 30 June 2025

Any questions about making a submission, please contact Edna Stevenson 027 478 0543 or ednastevenson1@gmail.com

Thank You!



**OTAGO PENINSULA
COMMUNITY BOARD**

50 The Octagon | Dunedin 9015 | PO Box 5045 | Dunedin 9058 | New Zealand
E dcc@dcc.govt.nz P +64 3 477 4000 www.dunedin.govt.nz

Submission to the Regional Public Transport Plan 2025-2035

Otago Peninsula Community Board

Executive Summary of Submission

1. Afternoon bus services are oversubscribed and overcrowded with commuters returning from school and work. This creates significant stress on commuters trying to get home from the city. The Board submits that an additional service from 2.45-3.30 would alleviate this issue.
2. Provisions for carrying cycles on buses to and from the Otago Peninsula is critical to integrate the Peninsula Connection developed by the Dunedin City Council and the public transport system. While the Board understands that this issue has been partially resolved, the Board seeks further action on this matter to ensure integrated commuting in our area.
3. The service should be extended beyond Ōtākou/Harington Point to the Albatross Colony to alleviate issues around turning buses illegally in Harington Point Road and to extend the service to locals and visitors coming to this area.

Afternoon Bus Services

Some years back the community rallied over the public transport services provided by the Council. That led to changes in the routes and timing of services that better met the needs of our commuters.

Since that time our service has been pushed to its limits and many children and parents in our community, face the daily challenge of securing a place on the public transport service from the city to the Otago Peninsula. The bus, especially during school hours, is often full, leaving many young people stranded at stops and unable to reach their destinations. It has resulted in stress and frustration for the community as they scramble to manage their schedules around an over-subscribed transport system.

This issue is not merely about the inconvenience of travelling. It is ultimately about the accessibility of education, employment, and important services. Without reliable public transport, we risk leaving our young people behind.

We appeal to the Council to acknowledge our predicament and thereby increase the frequency of bus services to the Otago Peninsula during peak hours to meet the demand. Increased services would help alleviate the pressure on existing transport facilities and provide much-needed access to vital services for our community.

This petition has 588 signatures from our community with a population of 4500 people. It represents a significant portion of the Peninsula who see this issue on a daily basis. I hope that the Otago Regional Council will accept this petition in the spirit that it is provided to

you, not as a criticism, but of a growing need for the benefit of the community and public transport system as a whole.

Carrying of Cycles on Buses

The Dunedin City Council and NZTA have made a significant investment in the Portobello and Harington Point Roads to provide safe road, pedestrian and cycling access available to the resident community and wider city/visitor community. The advent of electric bicycles has added a new dimension to the ability of people to efficiently travel to and from the city. The ability of cyclists to integrate both cycling and public transport use makes this an attractive option for many people on the Otago Peninsula and further afield. The Board submits that more work on this integration needs to continue so as to realise greater opportunities.

Extension of the Bus Service to Pukekura/Taiaroa Head

Presently, the bus service ends at Ōtākou/Harington Point leaving commuters no other option but to walk to the Albatross Colony or other attractions and services in the area. Public transport has been over-subscribed in the cruise ship tourism sector from Port Chalmers to Dunedin and return. Modern cities worldwide operate public transport to allow visitors to travel efficiently to public attractions and businesses, but on the Otago Peninsula that is simply not catered for. With an estimated 320,000 visitors to this part of our region and the generation of \$200 Million in ecotourism revenue the failure not to supply public transport is a significant impediment to business. By delivering visitors on public transport and extending the route to Pukekura the Council:

- Reduce vehicle congestion on Peninsula roads
- Reduce carbon emissions from vehicles
- Provide alternatives for travel and integration into cycling
- Remove the dangerous bus turnaround in the Ōtākou/Harington Point community

The Board submit that the Otago Regional Council should trial an extended service to and from Pukekura in the months 1st Oct-30th April for two years to look at the patronage and whether such an extension is viable.

Thank you for the opportunity to submit to the Plan. Below are the names of parents and residents supporting the extension of afternoon services



Paul Pope – Chairman

Otago Peninsula Community Board

Request by Peninsula residents to increase the level of afternoon services to the Otago Peninsula

Name	Country	Signed On
Paul Pope	New Zealand	13/02/2025
Paige Friesen	New Zealand	13/02/2025
Sarah McDougall	New Zealand	13/02/2025
Denise Powell	New Zealand	13/02/2025
Be Heller	New Zealand	13/02/2025
Kate Drummond	New Zealand	13/02/2025
Lara Liesbeth	New Zealand	13/02/2025
Chris Haig	New Zealand	13/02/2025
Fiona Jack	New Zealand	13/02/2025
Katherine Curran	New Zealand	13/02/2025
Jamie Ledbetter	New Zealand	13/02/2025
Mel McCosh	New Zealand	13/02/2025
Kathy Clarke	New Zealand	13/02/2025
Sarah Middleton	New Zealand	13/02/2025
Connagh Nadia Wesley	New Zealand	13/02/2025
Will McKee	New Zealand	13/02/2025
Joe Taylor	New Zealand	13/02/2025
Petra Wink	New Zealand	13/02/2025
Ronda Summers	New Zealand	13/02/2025
Sophial Surline	New Zealand	13/02/2025
Katherine Cooke	New Zealand	13/02/2025
Gilly Noon	New Zealand	13/02/2025
Rowan Cooke	New Zealand	13/02/2025
Kim Laing	New Zealand	13/02/2025
Sarah Bartley	New Zealand	13/02/2025
Fiona Thomas	New Zealand	13/02/2025
Caroline Rowe	New Zealand	13/02/2025
Aleisha Telford	New Zealand	13/02/2025
Nick Rowe	New Zealand	13/02/2025
Suzette Hunter	New Zealand	13/02/2025
Jill O'Brien	New Zealand	13/02/2025
Francesca Bolgar	New Zealand	13/02/2025
Grant Campbell	New Zealand	13/02/2025
Russell Thomlinson	New Zealand	13/02/2025
Ian Bilson	New Zealand	13/02/2025
Fiona Pickering	New Zealand	13/02/2025
Lauren bransgrove	New Zealand	13/02/2025
Nadine Simpson	New Zealand	13/02/2025
Chloe Humphreys	New Zealand	13/02/2025
Sheryl Webster	New Zealand	13/02/2025
Blair Stuart	New Zealand	13/02/2025

Cherie Brown	New Zealand	13/02/2025
Judy Hawker	New Zealand	13/02/2025
Rosemary McLean	New Zealand	13/02/2025
Kim Meredith-Jones	New Zealand	13/02/2025
Michele Dalwood	New Zealand	13/02/2025
Erin Anson	New Zealand	13/02/2025
Erin Sheppard	New Zealand	13/02/2025
Katie Bathgate	New Zealand	13/02/2025
Stefanie Kalmakoff	New Zealand	13/02/2025
Darling Mathieson	New Zealand	13/02/2025
Penny Wood	New Zealand	13/02/2025
Estelle Petraman	New Zealand	13/02/2025
Christine Moana Wesley	New Zealand	13/02/2025
Kelly Nyhon	New Zealand	13/02/2025
Pat Tillard	New Zealand	13/02/2025
Eve Bransgrove	New Zealand	13/02/2025
Emma Prosser	New Zealand	13/02/2025
Martin Steel	New Zealand	13/02/2025
Ryan Adams	New Zealand	13/02/2025
Rachel Kerr	New Zealand	13/02/2025
Shelley Reynolds	New Zealand	13/02/2025
Samantha Love	New Zealand	13/02/2025
Christine cjerry	New Zealand	13/02/2025
Lesley Roberts	New Zealand	13/02/2025
Mahlia Napier	New Zealand	13/02/2025
Beverley Carter	New Zealand	13/02/2025
Shelley Porteous	New Zealand	13/02/2025
Gemma Griffin	New Zealand	13/02/2025
Jenny Ogilvy	New Zealand	13/02/2025
Marisa Bellamy	New Zealand	13/02/2025
Lynette Joyce	New Zealand	13/02/2025
Linda Miller	New Zealand	13/02/2025
Jonathan Hooker	New Zealand	13/02/2025
Marjorie Blair	New Zealand	13/02/2025
Katelin Wilson	New Zealand	13/02/2025
Lauren Cummings	New Zealand	13/02/2025
Leonie Brewer	New Zealand	13/02/2025
Caroline Davies	New Zealand	13/02/2025
Kjesten Nilsson	New Zealand	13/02/2025
Naomi Tofa	New Zealand	13/02/2025
Hayley Joyce	New Zealand	13/02/2025
Grant Richards	New Zealand	13/02/2025
Vicki Cameron	New Zealand	13/02/2025
George Abbott	New Zealand	13/02/2025
Angella Alexander	New Zealand	13/02/2025
Robbie Henderson	New Zealand	13/02/2025
Joy Atkinson	New Zealand	13/02/2025

Celia jack	New Zealand	13/02/2025
Lucy Bell	New Zealand	13/02/2025
Suzie Harrold	New Zealand	13/02/2025
Susan Davies	New Zealand	13/02/2025
Elisabeth Bertoli	New Zealand	13/02/2025
Kelli Lamare	New Zealand	13/02/2025
Isabella Harrex	New Zealand	13/02/2025
Amber Mataira-Smith	New Zealand	13/02/2025
Sandy Penny	New Zealand	13/02/2025
Gretta Wallace	New Zealand	13/02/2025
Anna Leslie	New Zealand	13/02/2025
Jessica Loader	New Zealand	13/02/2025
Matt Bond	New Zealand	13/02/2025
Hannah te	New Zealand	13/02/2025
Fleurine Barré-Debilly	New Zealand	13/02/2025
Emily Tidey	New Zealand	13/02/2025
Craig Tidey	New Zealand	13/02/2025
Kim Cousins	New Zealand	13/02/2025
Amie Pont	New Zealand	13/02/2025
Jacinda Niles	New Zealand	13/02/2025
Nicola McGrouther	New Zealand	13/02/2025
Caitlin Hall	New Zealand	13/02/2025
Stephanie Pettigrew	New Zealand	13/02/2025
Ali Slade	New Zealand	13/02/2025
Catherine Coffey	New Zealand	13/02/2025
Hayley Harris	New Zealand	13/02/2025
Helen McDermott	New Zealand	13/02/2025
Emma Laurence	New Zealand	13/02/2025
Jack Van Baalen	New Zealand	13/02/2025
Tai Mclean	New Zealand	13/02/2025
Sabreen Nisha	New Zealand	13/02/2025
Olivia Galloway	New Zealand	13/02/2025
Kelly Hibbert	New Zealand	13/02/2025
Janine Hayward	New Zealand	13/02/2025
Eleanor Jenks	New Zealand	13/02/2025
Josie McDouall	New Zealand	13/02/2025
Zoey Mathewson	New Zealand	13/02/2025
Taylor hood	New Zealand	13/02/2025
Archie Vorgers	New Zealand	13/02/2025
Kristjan helleur	New Zealand	13/02/2025
Ronald Mc*****	New Zealand	13/02/2025
Mercedes Crowley	New Zealand	13/02/2025
Mike Reeve	New Zealand	13/02/2025
andrea moore	New Zealand	13/02/2025
Angus Ballard	New Zealand	13/02/2025
Mahana Paerata	New Zealand	13/02/2025
Philip Ballard	New Zealand	13/02/2025

Brett Hastie	New Zealand	13/02/2025
Hannah Baker	New Zealand	13/02/2025
heather soper	New Zealand	13/02/2025
Emily Larkins	New Zealand	13/02/2025
Nesha Sullivan	New Zealand	13/02/2025
A J Brown	New Zealand	13/02/2025
Jarrah Cooke	New Zealand	13/02/2025
David Large	New Zealand	13/02/2025
Jo Taylor	New Zealand	13/02/2025
Frances Carpenter	New Zealand	13/02/2025
Gillian Torckler	New Zealand	13/02/2025
Lynn Mayer	New Zealand	13/02/2025
jeanette tromop	New Zealand	13/02/2025
Lois Paterson	New Zealand	13/02/2025
Glynis Corson	New Zealand	13/02/2025
Daniel Pettigrew	New Zealand	13/02/2025
Denise Ives	New Zealand	13/02/2025
Holly Kendrick	New Zealand	13/02/2025
Keryn Broughton	New Zealand	13/02/2025
Hilary Hayde	New Zealand	13/02/2025
Delia Collins	New Zealand	13/02/2025
Chillay Aung	Australia	13/02/2025
Jaclyn Ashton	New Zealand	13/02/2025
Ann Mayer	New Zealand	13/02/2025
Elle Harris	New Zealand	13/02/2025
Franziska Wheeler	New Zealand	13/02/2025
Amy Murray	New Zealand	13/02/2025
Toni Hyde	New Zealand	13/02/2025
Bex McNaught	New Zealand	13/02/2025
Nichola MacArthur	New Zealand	13/02/2025
Lauren Tooley	New Zealand	13/02/2025
Chelsea Morrison	New Zealand	13/02/2025
Jemma Davis	New Zealand	13/02/2025
Kirstie Baty	New Zealand	13/02/2025
Jo Parsons	New Zealand	13/02/2025
Cecille Wesley	New Zealand	13/02/2025
Nicole Hunter	New Zealand	13/02/2025
Emily Hewson	New Zealand	13/02/2025
Candace Christensen	New Zealand	13/02/2025
Linda Phillips	New Zealand	13/02/2025
Rhona shaw	New Zealand	14/02/2025
Fran Hammond	New Zealand	14/02/2025
Linda Douglass	United States	14/02/2025
Peta Hudson	New Zealand	14/02/2025
Eric Shinnors	New Zealand	14/02/2025
June Tordoff	New Zealand	14/02/2025
Gemma P	New Zealand	14/02/2025

Dylan Henere	New Zealand	14/02/2025
Will Davis	New Zealand	14/02/2025
Katrina Lumagui	New Zealand	14/02/2025
Louise Ashto	New Zealand	14/02/2025
Kerryn Carson	New Zealand	14/02/2025
Jolene Cameron	New Zealand	14/02/2025
Sebastian Kerkvliet	New Zealand	14/02/2025
Rebecca Weston	New Zealand	14/02/2025
Katherine Salmond	New Zealand	14/02/2025
Julie Addis	New Zealand	14/02/2025
Jessica Henere	New Zealand	14/02/2025
Nazahah Nisha	New Zealand	14/02/2025
Tim Lynch	New Zealand	14/02/2025
Ngairi Booth	New Zealand	14/02/2025
Nadia Wesley-Smith	New Zealand	14/02/2025
Klynt Greer	New Zealand	14/02/2025
Amy Hickling	New Zealand	14/02/2025
Bev Hellyer	New Zealand	14/02/2025
Allison North	New Zealand	14/02/2025
Steve Sullivan	New Zealand	14/02/2025
Yanna Sullivan	New Zealand	14/02/2025
Georgie Bond	New Zealand	14/02/2025
Amanda McLean	New Zealand	14/02/2025
Kate Rabbidge	New Zealand	14/02/2025
Andrea Pere	New Zealand	14/02/2025
Rachel McDonald	New Zealand	14/02/2025
David Tordoff	New Zealand	14/02/2025
Kate Pinnock	New Zealand	14/02/2025
Charly Walsh	New Zealand	14/02/2025
Jenelle Sell	New Zealand	14/02/2025
Yoshiko Cowell	New Zealand	14/02/2025
emiko cowell	New Zealand	14/02/2025
Michelle Ashbury	New Zealand	14/02/2025
A M	New Zealand	14/02/2025
Cathy Chapple	New Zealand	14/02/2025
Penelope Scott	New Zealand	14/02/2025
Andrea Edwards	New Zealand	14/02/2025
Tony Morgan	New Zealand	14/02/2025
Cheryl Tapp	New Zealand	14/02/2025
Charmaine Mundy	New Zealand	14/02/2025
Divya Adhia	New Zealand	14/02/2025
Veronique Shields	New Zealand	14/02/2025
Jo Nielson	New Zealand	14/02/2025
Tiffany Holmes	New Zealand	14/02/2025
Josephine Crawley	New Zealand	14/02/2025
Chihiro Smithies	New Zealand	14/02/2025
Annalise Ellison	New Zealand	14/02/2025

Mike Smithies	New Zealand	14/02/2025
Elaine Kosta	New Zealand	14/02/2025
Nicky McHugh	New Zealand	14/02/2025
Ram Mani	New Zealand	14/02/2025
Ahmad Tahmasi	New Zealand	14/02/2025
Mel Atkinson	New Zealand	14/02/2025
shanna verhoef	New Zealand	14/02/2025
Elliot Price	New Zealand	14/02/2025
Edna Stevenson	New Zealand	14/02/2025
Rachel Quennell	New Zealand	14/02/2025
Kaye Stewart	New Zealand	14/02/2025
Sutherland Karen	New Zealand	14/02/2025
Tomiko Cowell	New Zealand	14/02/2025
Sha Hemopo	New Zealand	14/02/2025
Janet Bernard	New Zealand	15/02/2025
Henry Francis	New Zealand	15/02/2025
Sarah Wood	New Zealand	15/02/2025
Dot Steentjes	New Zealand	15/02/2025
Birgit Holland	New Zealand	15/02/2025
Andrea Watson-Smith	New Zealand	15/02/2025
Janette hart	New Zealand	15/02/2025
Ainslie Ballard	New Zealand	15/02/2025
Tyne Broad	New Zealand	15/02/2025
Rachael Forde	New Zealand	15/02/2025
Ashling Coffey	New Zealand	15/02/2025
Emma Walker	New Zealand	15/02/2025
ROBYN HARRY	New Zealand	15/02/2025
Kylie Fraser	New Zealand	15/02/2025
Lyn Pope	New Zealand	15/02/2025
Bronwyn Dargaville	New Zealand	15/02/2025
Megan Potiki	New Zealand	15/02/2025
Jasmine McPherson	New Zealand	15/02/2025
Cilla Dickinson	New Zealand	15/02/2025
Heather Morris	New Zealand	15/02/2025
Mila Meecham	New Zealand	15/02/2025
Kristin Gubb	New Zealand	15/02/2025
Rachael Gullery	New Zealand	15/02/2025
Nick Baty	New Zealand	15/02/2025
Sharon Cox	New Zealand	15/02/2025
Roslyn Pearce	New Zealand	15/02/2025
P Byers	New Zealand	15/02/2025
kylie barker	New Zealand	15/02/2025
Noah Baty	New Zealand	15/02/2025
Christoph Boddem	New Zealand	15/02/2025
David Arnold	New Zealand	15/02/2025
Sue McKellar	New Zealand	15/02/2025
christine Obbeek	New Zealand	15/02/2025

Peter Hart	New Zealand	15/02/2025
megan Woodman	New Zealand	15/02/2025
Kaylene Wright	New Zealand	15/02/2025
Judith Lamb Judith Lamb	New Zealand	15/02/2025
Angela Williams	New Zealand	15/02/2025
Bridget Brown	New Zealand	15/02/2025
Stephen Black	New Zealand	15/02/2025
Keith Ross	New Zealand	15/02/2025
Wendy Kelling	New Zealand	15/02/2025
Leslie Phillips	New Zealand	15/02/2025
suzanne lester	New Zealand	15/02/2025
Jenny Dobson	New Zealand	15/02/2025
Rachel Baker	New Zealand	15/02/2025
Chloe Ritchie	New Zealand	15/02/2025
vesta rivers	New Zealand	15/02/2025
Lisa Campbell	New Zealand	15/02/2025
Anne Besson	New Zealand	15/02/2025
Tanya Wilson	New Zealand	15/02/2025
Jenilee Hill	New Zealand	15/02/2025
Zehavit Darlington	New Zealand	15/02/2025
Anna Moore	New Zealand	15/02/2025
Virginia Driver	New Zealand	15/02/2025
Fraser McNally	New Zealand	15/02/2025
Nicola Morand	New Zealand	15/02/2025
Quentin Mildon	New Zealand	15/02/2025
Martin Gagnon	New Zealand	15/02/2025
Sarah Murray	New Zealand	15/02/2025
tab thomas	New Zealand	15/02/2025
Rose McPherson	New Zealand	15/02/2025
Michele Wilkie	New Zealand	15/02/2025
Janet Heptonstall	New Zealand	15/02/2025
PETER STECHMAN	New Zealand	15/02/2025
Denise Casey	New Zealand	15/02/2025
Barbara Guthrie	New Zealand	15/02/2025
Cecillr Wesley	New Zealand	15/02/2025
Grace McPherson	New Zealand	15/02/2025
Cindy Diver	New Zealand	15/02/2025
Rachel Duell	New Zealand	15/02/2025
Laura Andrews	New Zealand	15/02/2025
Maria Risoli	New Zealand	15/02/2025
Alison Blair	New Zealand	16/02/2025
Alison Thornicroft	New Zealand	16/02/2025
tessa mills	New Zealand	16/02/2025
Mark Hellyer	New Zealand	16/02/2025
Hugo Todd	New Zealand	16/02/2025
Lala Frazer	New Zealand	16/02/2025
Mary Mercer	New Zealand	16/02/2025

Meagan Hurley	New Zealand	16/02/2025
Marcus Wainwright	New Zealand	16/02/2025
Sigurd Wilbanks	New Zealand	16/02/2025
David Redshaw	New Zealand	16/02/2025
Gillian Whitehead	New Zealand	16/02/2025
Rosie Dunn	New Zealand	16/02/2025
Jen Olsen	New Zealand	16/02/2025
Chris Swann	New Zealand	16/02/2025
Ellen Walters	New Zealand	16/02/2025
Shelley Steel	New Zealand	16/02/2025
Jeanine McKenzie	New Zealand	16/02/2025
Jacqui Park	New Zealand	16/02/2025
Emily Severne	New Zealand	16/02/2025
Maewa Severne	New Zealand	16/02/2025
Marilyn Murphy	New Zealand	16/02/2025
Elisa Ufagalilo	New Zealand	16/02/2025
Tiana Griffin	New Zealand	16/02/2025
Bonny Proctor	New Zealand	16/02/2025
Leah Jennens	New Zealand	16/02/2025
Katrina Terry	New Zealand	16/02/2025
Lea Werner	New Zealand	16/02/2025
Anne Ryan	New Zealand	16/02/2025
JENNI BURROWS	New Zealand	16/02/2025
Bruce Wilson	New Zealand	16/02/2025
Dennis Moore	New Zealand	16/02/2025
Julie Hamilton	New Zealand	16/02/2025
Katrin Haase	New Zealand	16/02/2025
Daila Kavanagh	New Zealand	16/02/2025
Chanel Hepi	New Zealand	16/02/2025
Richelle Adams	New Zealand	16/02/2025
Janie Nolan	New Zealand	16/02/2025
Pikiteora Jacobson	New Zealand	16/02/2025
Lynne Ashworth	New Zealand	16/02/2025
Jade Carter	New Zealand	16/02/2025
Michelle Lawson	New Zealand	16/02/2025
Melony Wealleans	New Zealand	16/02/2025
Melody Baker	New Zealand	16/02/2025
Paul Dyer	New Zealand	16/02/2025
Gwynnedd Somerville	New Zealand	16/02/2025
Sarah Lawrence	New Zealand	16/02/2025
Gail Casey	New Zealand	16/02/2025
Naho Smithies	New Zealand	16/02/2025
Karen Nielsen	New Zealand	16/02/2025
Elaine Wilson	New Zealand	16/02/2025
Ella Campbell-Hall	New Zealand	16/02/2025
Mark Johnson	New Zealand	16/02/2025
Robyn Urquhart	New Zealand	16/02/2025

Rebecca Kokaua-Blair	New Zealand	16/02/2025
Liz Abbott	New Zealand	16/02/2025
Brendan Ford	New Zealand	16/02/2025
S Young	New Zealand	16/02/2025
Rudie Verhoef	New Zealand	16/02/2025
Rochelle Wilson	New Zealand	16/02/2025
Jan Campbell	New Zealand	16/02/2025
hayley robbins	New Zealand	16/02/2025
Matthew Maxwell	New Zealand	16/02/2025
Sarah Ali-Khan	New Zealand	16/02/2025
Lynley Breeze	New Zealand	16/02/2025
Olivia Taylor	New Zealand	16/02/2025
cosmo mcgrath	New Zealand	16/02/2025
Ashraff Graham	New Zealand	16/02/2025
Tyla Tahau	New Zealand	16/02/2025
Bridie Scott	New Zealand	16/02/2025
Georgina Wahitapu	New Zealand	16/02/2025
Lucy Goldsmith	New Zealand	16/02/2025
Pauleen Tekoronga	New Zealand	17/02/2025
Kammi Borngraber	New Zealand	17/02/2025
Tim Stevenson	New Zealand	17/02/2025
Shirley Jones	New Zealand	17/02/2025
Kate Oktay	New Zealand	17/02/2025
Therese Sharma	New Zealand	17/02/2025
Clare Woodford-Robinson	New Zealand	17/02/2025
Natasha Whaanga	New Zealand	17/02/2025
Tybalt Seagar	New Zealand	17/02/2025
Sarah Tawhai	New Zealand	17/02/2025
Suzette Kearney	New Zealand	17/02/2025
GEORGE Gall	New Zealand	17/02/2025
selwyn everson	New Zealand	17/02/2025
Adrienne Brown	New Zealand	17/02/2025
Mary van Voornveld	New Zealand	17/02/2025
Anton vazey	New Zealand	17/02/2025
Chere Brooking	New Zealand	17/02/2025
alana gunson	New Zealand	17/02/2025
Kelly Ahipene	New Zealand	17/02/2025
Tracey Sim	New Zealand	17/02/2025
Alice Donohoe	New Zealand	17/02/2025
La McGee-Repia	New Zealand	17/02/2025
Harold Thompson	New Zealand	17/02/2025
Dale Brewster	New Zealand	17/02/2025
Rachel Ovens	New Zealand	17/02/2025
Shelley van der hilst	New Zealand	17/02/2025
Natasha Wawatai	New Zealand	17/02/2025
Kini Kakau	New Zealand	17/02/2025
Veronica Wilson	New Zealand	17/02/2025

Lisa Waipouri	New Zealand	17/02/2025
Georgia Dowling	New Zealand	17/02/2025
Shae Hafoka	New Zealand	17/02/2025
Adam Middleton	New Zealand	17/02/2025
Lesley Matthews	New Zealand	17/02/2025
Alicia Monteith	New Zealand	17/02/2025
Shona Hore	New Zealand	17/02/2025
Patrick Adele	New Zealand	17/02/2025
Matthew Leedon	New Zealand	17/02/2025
Sofia Bated	New Zealand	17/02/2025
Anita King	New Zealand	17/02/2025
Nikki wilson	New Zealand	17/02/2025
Ngahuia Hall	New Zealand	17/02/2025
Linda Campbell	New Zealand	17/02/2025
Lee Addams	New Zealand	17/02/2025
Kirsten Koch	New Zealand	17/02/2025
Joy Steel	New Zealand	17/02/2025
janelle ahchee	New Zealand	17/02/2025
Andrew Jack	New Zealand	17/02/2025
Trinie Moore	New Zealand	17/02/2025
Riripeti Mark	New Zealand	17/02/2025
Kaya Koopu	New Zealand	17/02/2025
Anderson Straker	New Zealand	17/02/2025
Peter Cooke	New Zealand	17/02/2025
Rebecca Gilbertson	New Zealand	17/02/2025
Ben Maru	New Zealand	17/02/2025
jane Stevens	New Zealand	17/02/2025
Cameron Whitworth	New Zealand	17/02/2025
Sharon Porima	New Zealand	17/02/2025
James Mackay	New Zealand	17/02/2025
Jennifer Winter	New Zealand	17/02/2025
Sean Doyle	New Zealand	17/02/2025
Paddy Richardson	New Zealand	17/02/2025
Kiwa Atkins	New Zealand	17/02/2025
Simon Richardson	New Zealand	17/02/2025
Claire Beynon	New Zealand	17/02/2025
Margaret Smith	New Zealand	17/02/2025
Emmett Yofuck	New Zealand	18/02/2025
Ayla Parker	New Zealand	18/02/2025
Josephine edmonds	New Zealand	18/02/2025
Lorraine Tataurangi	New Zealand	18/02/2025
Erika Buky	New Zealand	18/02/2025
Michelle Lindsay	New Zealand	18/02/2025
Kelton McMillan	New Zealand	18/02/2025
Cody McLeod	New Zealand	18/02/2025
melissa saunders	New Zealand	18/02/2025
Terence O'Brien	New Zealand	18/02/2025

Heather Kelling	New Zealand	18/02/2025
Tyron hema	New Zealand	18/02/2025
Keren Graham	New Zealand	18/02/2025
Emma Turner	New Zealand	18/02/2025
jessie rawnsley	New Zealand	18/02/2025
Esther Sibbald	New Zealand	18/02/2025
Lynley Carran	New Zealand	18/02/2025
lisa anderson	New Zealand	18/02/2025
Alistair Boyd	New Zealand	18/02/2025
Ambe R	New Zealand	18/02/2025
Abby Cruikshank	New Zealand	18/02/2025
Kamiria Erueti	New Zealand	18/02/2025
Jenny Wilcox	New Zealand	18/02/2025
Jason Graham	New Zealand	18/02/2025
Katy-May Apiata	New Zealand	18/02/2025
Kath Hoare	New Zealand	18/02/2025
Sean Doyle	New Zealand	18/02/2025
Robyn Lilley	New Zealand	18/02/2025
Cheyne Martin	New Zealand	19/02/2025
Steve Phillips	New Zealand	19/02/2025
Jaxon Kennedy	New Zealand	19/02/2025
Kathryn Baynham	New Zealand	19/02/2025
Polly Mason	New Zealand	19/02/2025
Jen Stokes	New Zealand	19/02/2025
Esmé Liesbeth Blaker	New Zealand	19/02/2025
Raul Martin Gomez	New Zealand	19/02/2025
Els Petraman Martin	New Zealand	19/02/2025
Shaun Pinfold	New Zealand	19/02/2025
Marcelus Stoltz	New Zealand	19/02/2025
Alice Meredith	New Zealand	19/02/2025
Margaret Rillstone	New Zealand	19/02/2025
Leotele Savaiinaea	New Zealand	20/02/2025
Harris Rashid	New Zealand	20/02/2025
Debbie Easson	New Zealand	20/02/2025
cathy matthews	New Zealand	20/02/2025
Amanda Glossop	New Zealand	20/02/2025
Sandra Bassford	New Zealand	20/02/2025
Daniel Ashton	New Zealand	20/02/2025
Save Waipara Valley	New Zealand	20/02/2025
Michelle Healey	New Zealand	20/02/2025
Max Smith	New Zealand	20/02/2025
Benji Frater	New Zealand	20/02/2025
Chris Laumahina	New Zealand	20/02/2025
La Charm'e	New Zealand	20/02/2025
Dave M	New Zealand	20/02/2025
Missy Petersen	New Zealand	20/02/2025
Charlotte Whanga-Katipa	New Zealand	20/02/2025

Jen Cooke	New Zealand	20/02/2025
Malia Corson	New Zealand	20/02/2025
Gabriela Marchini	New Zealand	20/02/2025
Yasmin Whyte	New Zealand	20/02/2025
Fiona Penetana	New Zealand	20/02/2025
Robyn McDonald	New Zealand	20/02/2025
Jim Ata	New Zealand	21/02/2025
Venus Ihakara	New Zealand	21/02/2025
Alan Nind	New Zealand	21/02/2025
Donna Bolstad	New Zealand	21/02/2025
Eleanor Russell	New Zealand	21/02/2025
Hope Henderson	New Zealand	21/02/2025
Paul Le Comte	New Zealand	21/02/2025
Luca kucera	New Zealand	22/02/2025
Paul Bertoli	New Zealand	22/02/2025
Linda Seddon	New Zealand	22/02/2025
Anh Thao Dam	New Zealand	22/02/2025
Rina Tukiri	New Zealand	22/02/2025
Jason Anson	New Zealand	22/02/2025
Sandra Hunt	New Zealand	23/02/2025
James Matenga	New Zealand	23/02/2025
Destiny Foster	New Zealand	23/02/2025
Rachel Morse	New Zealand	23/02/2025
Elle White	New Zealand	23/02/2025
Sean Aldrich	New Zealand	23/02/2025
Rieke Lamb	New Zealand	24/02/2025
Tom Hobbs	New Zealand	24/02/2025
Khawja Sidiqi	New Zealand	25/02/2025
Reiko Kurihara	New Zealand	26/02/2025
Sarah Antunovich	New Zealand	26/02/2025
Ruth Dickson	New Zealand	27/02/2025
felix dickson	New Zealand	27/02/2025
Sophie Demant	New Zealand	27/02/2025
Tane caddy	New Zealand	27/02/2025
Lou Luff	New Zealand	27/02/2025
Rosemary Cole	New Zealand	27/02/2025
David Hunter	New Zealand	28/02/2025
Alice Davies	New Zealand	28/02/2025
Stefan Hadfield	New Zealand	2/03/2025
patrick Bain	New Zealand	2/03/2025
Faith Abbott	New Zealand	3/03/2025
Sarah Parker	New Zealand	3/03/2025
John Abbott	New Zealand	3/03/2025
Sarah-jayne Springthorpe	New Zealand	3/03/2025
Sheryl Sharp	New Zealand	3/03/2025
Jill Crichton	New Zealand	4/03/2025
Karen Weatherall	New Zealand	4/03/2025

Angela Clarke	New Zealand	4/03/2025
Will Wright	New Zealand	4/03/2025
Bertha Whyte	New Zealand	4/03/2025
Fiona Bartlett	New Zealand	4/03/2025
Dion. Tae	New Zealand	5/03/2025
Wai Johnson	New Zealand	5/03/2025
Jamiel Matenga	New Zealand	5/03/2025
Malaki Casey	New Zealand	5/03/2025
Bella King	New Zealand	5/03/2025
Tamara Harris	New Zealand	6/03/2025
Jammer Sudae	New Zealand	6/03/2025
kat hartley	New Zealand	6/03/2025
Elena Stevenson	New Zealand	6/03/2025
Katie Hector	New Zealand	7/03/2025
Samantha Hector	New Zealand	7/03/2025
Laura Vander Kley	New Zealand	7/03/2025
Olivia Nelson	New Zealand	7/03/2025
Jesse Saunders	New Zealand	7/03/2025
lynne hector	New Zealand	7/03/2025
Kristi Jardine	New Zealand	7/03/2025
Kim Spencer-McDonald	New Zealand	7/03/2025
Katie Davis	New Zealand	7/03/2025
Jo Clark	New Zealand	7/03/2025
Jasmine Lynch	New Zealand	7/03/2025
Jinhee An	New Zealand	7/03/2025
Sarah Connolly	New Zealand	8/03/2025
Josh Ekenasio	New Zealand	8/03/2025
Meg deBlanc-Knowles	New Zealand	9/03/2025
Momo Leonie Mahaku	New Zealand	9/03/2025
Addy Fettuccine	New Zealand	9/03/2025

Yours Faithfully

Paul Pope"

SPEED LIMIT REVERSAL LIST TO BE SUBMITTED UNDER THE SETTING OF SPEED LIMITS RULE 2024

Department: Transport

EXECUTIVE SUMMARY

- 1 This report updates Council on the proposed list of speed limit reversals that are required to be submitted under the Setting of Speed Limits Rule 2024 (the Rule).
- 2 The Rule requires Road Controlling Authorities (RCAs) to provide a list of specified roads to the New Zealand Transport Agency (NZTA Waka Kotahi) by 1 May 2025 where speed limits must be reversed and in force by 1 July 2025.
- 3 The definition of a 'specified road' within the Rule refers to speed limits set since 1 January 2020 on urban connectors, and permanent 30km/h speed limits on local streets set because there is a school in the area.
- 4 Staff have assessed all local streets with a permanent speed limit of 30km/h and all urban connectors with a reduced speed implemented since 1 January 2020. The list of specified roads subject to automatic reversal is included as Attachment A.
- 5 The proposed list of specified roads minimises adverse effects on road safety and disruption to the community and minimises unbudgeted costs. The approach aligns with that taken by other major RCA's such as Christchurch City and Hamilton City, as well as smaller Councils.

RECOMMENDATIONS

That the Council:

- a) **Approves** submission of Attachment A of this report to the Director of Land Transport, as required by the Setting of Speed Limits Rule 2024.

BACKGROUND

- 6 Prior to 2022, speed limits were set using the speed limits bylaw process. Under this process the DCC, as the RCA, determined which roads were subject to speed limit changes and subsequently consulted and decided on proposed speed limit changes.
- 7 During 2021, NZTA Waka Kotahi started consultation on a new regulatory framework to set speed limits which would replace local bylaw processes. Public consultation was undertaken on this for nine weeks.

- 8 Workshops were run with RCAs across New Zealand and the outcome of this process was the Setting of Speed Limits Rule 2022, which came into force on 19 May 2022. The Rule removed the ability for speed limits to be made under a bylaw and the DCC Speed Limits Bylaw was formally revoked at the 8 November 2022 Council meeting.
- 9 Under the 2022 Rule, the DCC proposed and consulted on an Interim Speed Management Plan (ISMP) that reduced speed limits outside schools, in surrounding neighbourhoods, and some urban centres. These speed limits aligned with the guidance and recommendations provided in NZTA Waka Kotahi's Speed Management Guide Road to Zero edition. The consultation ran for four weeks, and 188 submissions were received. All ISMP speed limit changes were implemented by June 2023 at a cost of \$670,000.
- 10 During 2023, the DCC proposed and consulted on a full Speed Management Plan (SMP), as required under the 2022 Rule. The SMP proposed reduced speed limits in some suburbs and rural settlements, and in many cases extended existing areas with reduced speed limits that were implemented under the ISMP. The consultation ran for three weeks, and 2030 submissions were received. Hearings were held for three days, with 151 submitters requesting an opportunity to present.
- 11 Following the change of government, the new Minister of Transport amended the 2022 Rule to remove the requirement to submit an SMP and wrote to councils advising them to halt work on SMPs and to await further guidance.
- 12 In June 2024, the Ministry of Transport released the draft Setting of Speed Limits Rule 2024 with a public consultation period of four weeks. There were no workshops conducted ahead of the release of this Rule.
- 13 The new Land Transport Rule: Setting of Speed Limits 2024 (Rule) came into force on 30 October 2024 and replaced the 2022 Rule.
- 14 The new Rule changes the process by which new speed limits are set, as well as requiring reversal of recent permanent speed limit reductions on specified roads. The prescribed speed limit reversal process does not require consultation with communities.
- 15 The Rule requires specified roads that have had speed limit reductions since 1 January 2020 to be reversed by 1 July 2025. The DCC must provide a list of specified roads for speed limit reversal to NZTA Waka Kotahi by 1 May 2025.

DISCUSSION

- 16 Through the ISMP, permanent 30km/h speed limits were implemented on local streets in a selection of neighbourhoods to improve amenity and safety outcomes. Many of these neighbourhood areas included a school, which required a permanent 30km/h speed limit outside the school gate to fit with the surrounding neighbourhood speed limit. Many of these changes were in areas where 30km/h is consistent with the local mean operating speed.
- 17 The neighbourhoods in the vicinity of schools were the starting point due to higher levels of pedestrian access and general amenity. Subsequently, this resulted in the DCC fulfilling the requirement to reduce speed limits around schools ahead of the deadline given in the 2022 Rule.

- 18 The slower speed neighbourhoods implemented in the ISMP formed the starting point from which the proposed full SMP would progress a 10-year vision for reduced speed limits, in line with the NZTA Waka Kotahi Road to Zero vision.
- 19 The definition of a 'specified road' within the 2024 Rule refers to urban connectors, and permanent 30km/h speed limits where a reason for setting that limit was because there was a school in the area. While many of the areas implemented in the ISMP included a school, the reduced speed limit in front of the school was done to align with the wider neighbourhood speed reductions.
- 20 Additionally, the definition of specified road in the Rule does not include the terms "outside a school gate" and "road adjoining the section of road outside a school gate" which are specifically provided for elsewhere in the Rule.
- 21 The Rule generally requires that the RCA must reverse the (previously made) amended speed limit and set a permanent speed limit for "specified roads". However, the Rule enables an RCA to retain a permanent 30km/h speed limit for a road outside a school gate if that limit was already in force by 30 October 2024, the road adjoining this also has a speed limit of 30km/h, and neither the road outside the school gate or the adjoining road, are a specified road.
- 22 All local streets that have had permanent 30km/h speed limits implemented since 1 January 2020 have been assessed by staff against the Rule.
- 23 Based on the review, DCC proposes to retain most permanent 30km/h speed limits outside schools and in nearby neighbourhood streets. This interpretation is consistent with the approach of other major RCAs and smaller Councils when determining their list of specified roads.
- 24 There are six local streets around Abbotsford School that are included in the attached list of specified roads for reversal. Permanent 30km/h speed limits on these roads would be removed and changed to a variable 30km/h speed limit during school drop off and pick up times. The mean operating speeds on these roads indicate that the reduced speed limits implemented under the ISMP are not having the desired outcome and a variable speed limit with additional traffic calming measures would likely result in better compliance.
- 25 Staff have discussed the proposed changes with Abbotsford school and have received feedback that they would like to see infrastructure changes and electronic signs alongside the variable speed limits to improve compliance and therefore safety outcomes.
- 26 Six sections of road identified as 'urban connectors' with a reduced speed limit implemented since 1 January 2020 have been reviewed by staff against the definition within Schedule 3 of the Rule, which describes an urban connector as a street that provides for the movement of people and goods between different parts of urban areas, "with low levels of interaction between the adjacent land use and the street".
- 27 These roads can retain lowered speed limits due to the difference in definitions between the One Network Framework and the speed limits classification table of the Rule. This is confirmed in the Speed Limit Guidance provided by NZTA Waka Kotahi.
- 28 In each case, the road environment was assessed to have medium to high levels of interaction between adjacent land use and the street. Reasons for this assessment included the presence of a shared path, community centres, parks, accesses to high density housing, proximity to

businesses, and other local amenities requiring pedestrians to cross the road for access. For these reasons the reviewed roads are not included in the list for speed limit reversal.

- 29 For example, sections of Portobello Road through Macandrew Bay and Broad Bay are classed as an 'urban connector' by the One Network Framework. However, these sections of road do not meet the definition of urban connector within the Rule due to the shared path which promotes medium to high levels of interaction between the land adjacent to the road. Additionally, there are amenities such as shops, parks and beach access that promote the movement of people across the roadway. These sections of Portobello Road do not meet the definition of an 'urban connector' as defined in the Rule and are therefore not included for reversal.

OPTIONS

- 30 The DCC as an RCA must comply with the Rule and submit a list of speed limits for reversal. The Rule does not require the list of reversals to be approved by Council.

Option One – Recommended Option

Impact assessment

- 31 Council approves the list of specified roads to be submitted to NZTA Waka Kotahi by 1 May 2025.

Debt

- No debt funding is required for this option.

Rates

- There are no impacts on rates.

Zero carbon

- Due to the small scale of roads listed for speed limit reversals the greenhouse gas emissions are likely to stay the same with this option.

Advantages

- Minimises disruption to the community that would occur due to changing speed limits.
- Minimises unbudgeted costs.
- Minimises adverse safety outcomes that could occur due to increasing speed limits.

Disadvantages

- There is a risk that the list of specified roads in Attachment A would not align with the Ministry of Transport's intention of the Rule. The consequence of this may be that staff are subsequently required by NZTA Waka Kotahi to re-evaluate the roads subject to reversal.

Option Two – Status Quo

Impact assessment

- 32 Council does not approve the list of specified roads and the DCC does not submit a list of specified roads to NZTA Waka Kotahi by the deadline.

Debt

- No debt funding is required for this option.

Rates

- There are no impacts on rates.

Zero carbon

- If no speed limit reversals are required, the greenhouse gas emissions will stay the same.

Advantages

- Minimises disruption to the community that would occur due to changing speed limits.
- Minimises unbudgeted costs.
- Minimises adverse safety outcomes that could occur due to increasing speed limits.

Disadvantages

- There is a risk that by not submitting a list of speed limit reversals, staff may be required by NZTA Waka Kotahi to re-evaluate the roads subject to reversal.

NEXT STEPS

- 33 The list of speed limit reversals in Attachment A will be submitted to NZTA Waka Kotahi.
- 34 The speed limit reversals will be implemented by 1 July 2025.

Signatories

Author:	Maddie Pascoe - Transport Analyst
Authoriser:	Jeanine Benson - Group Manager Transport Scott MacLean - General Manager, Climate and City Growth

Attachments

	Title	Page
A	List of specified roads for speed limit reversal	

SUMMARY OF CONSIDERATIONS

Fit with purpose of Local Government

This decision enables democratic local decision making and action by, and on behalf of communities. This decision promotes the social, economic, environmental, and cultural well-being of communities in the present and for the future.

Fit with strategic framework

	Contributes	Detracts	Not applicable
Social Wellbeing Strategy	✓	<input type="checkbox"/>	<input type="checkbox"/>
Economic Development Strategy	<input type="checkbox"/>	<input type="checkbox"/>	✓
Environment Strategy	✓	<input type="checkbox"/>	<input type="checkbox"/>
Arts and Culture Strategy	<input type="checkbox"/>	<input type="checkbox"/>	✓
3 Waters Strategy	<input type="checkbox"/>	<input type="checkbox"/>	✓
Future Development Strategy	✓	<input type="checkbox"/>	<input type="checkbox"/>
Integrated Transport Strategy	✓	<input type="checkbox"/>	<input type="checkbox"/>
Parks and Recreation Strategy	<input type="checkbox"/>	<input type="checkbox"/>	✓
Other strategic projects/policies/plans	<input type="checkbox"/>	<input type="checkbox"/>	✓

Ensuring Dunedin is a safe city is prioritised in the Social Wellbeing Strategy, Spatial Plan and Long-Term Plan as well as the Integrated Transport Strategy. Safer speeds are one of four pillars under the Safe System approach to reduce the number of fatal and serious injury crashes occurring on Dunedin's road network.

Māori Impact Statement

The Rule acknowledges Māori as Treaty partners, and that Māori are involved in the development of SMPs and consulted on aspects of the plan that are important to them. Mana Whenua were engaged with during the Interim Speed Management Plan (ISMP). The speed limits implemented under the ISMP form the majority of speed limits required to be reviewed for reversal.

Sustainability

Reduced speed around urban areas and settlements makes it a safer environment to enable more people to walk and cycle. Lower speeds have a positive impact on our city's carbon emissions.

Zero carbon

Reduced speed limits around urban areas and settlements makes it a safer environment to enable more people to walk and cycle. Lower speed limits have a positive impact on city-wide carbon emissions.

LTP/Annual Plan / Financial Strategy /Infrastructure Strategy

There are no implications.

Financial considerations

The requirement to conduct speed limit reversals has not been budgeted for and while co-funding is available, DCC will incur costs if existing speed limits are reversed. A smaller number of speed limit reversals will have significant cost savings to the DCC.

Significance

This decision is considered medium in terms of the Council's Significance and Engagement Policy.

SUMMARY OF CONSIDERATIONS
<p><i>Engagement – external</i></p> <p>External legal advice has been sought regarding the proposed approach to speed limit reversals. Certain aspects of the Rule have been queried with NZTA Waka Kotahi for clarification.</p>
<p><i>Engagement - internal</i></p> <p>There has been internal engagement with the Legal team.</p>
<p><i>Risks: Legal / Health and Safety etc.</i></p> <p>The proposal is the most pragmatic interpretation of the Rule, and while NZTA Waka Kotahi could require staff to re-evaluate roads subject to reversal which would be at a cost to the DCC, there is no significant legal risk.</p>
<p><i>Conflict of Interest</i></p> <p>There are no known conflicts of interest.</p>
<p><i>Community Boards</i></p> <p>Community boards were notified of the consultation on the draft Rule in 2024 and Transport staff conducted a meeting to discuss the implications. Community boards were encouraged to submit on the draft Rule.</p>

RCA Name: Dunedin City Council

Road - Include the road name, and the start and end locations	start location	end location	Corridor ID	Road section length (kms)	Treatment - Reversal - VSL outside a school - Retaining the current speed limit	Why this is a specified road - Local street with a school in the area - Urban connector	Current speed limit (km/h)	Previous speed limit being implemented (km/h)	Type of Speed limit being implemented - permanent - variable	Implementation Date - must be before 01/07/25 in format DD/MM/YY	If a VSL is being set outside a school, provide the times of operation
North Taieri Road	Paterson Street	143 North Taieri Road	NORTH_82161, and NORTH_D36836	1.31	Reversal to previous speed limit	Local street with a school in the area	30	50	Permanent	30/06/25	
North Taieri Road	24 North Taieri Road	143 North Taieri Road	NORTH_82161, and NORTH_D36836	0.79	Road outside a school - variable speed limit to be implemented	Local street with a school in the area	30	50	Variable	30/06/25	8.15 - 9.45am 2.05 - 3.35pm
Abbotts Hill Road	17 Abbotts Hill Road	North Taieri Road	ABBOTTS_112255	0.14	Reversal to previous speed limit	Local street with a school in the area	30	50	Permanent	30/06/25	
Abbotts Hill Road	17 Abbotts Hill Road	North Taieri Road	ABBOTTS_112255	0.14	Road outside a school - variable speed limit to be implemented	Local street with a school in the area	30	50	Variable	30/06/25	8.15 - 9.45am 2.05 - 3.35pm
Mckinlay Road	North Taieri Road	Lambert Street	MCKINLAY_958	0.11	Reversal to previous speed limit	Local street with a school in the area	30	50	Permanent	30/06/25	
Mckinlay Road	North Taieri Road	Lambert Street	MCKINLAY_958	0.11	Road outside a school - variable speed limit to be implemented	Local street with a school in the area	30	50	Variable	30/06/25	8.15 - 9.45am 2.05 - 3.35pm
Lambert Street	Mckinlay Road	Hyslop Street	LAMBERT_020730	0.33	Reversal to previous speed limit	Local street with a school in the area	30	50	Permanent	30/06/25	
Lambert Street	Mckinlay Road	Hyslop Street	LAMBERT_020730	0.33	Road outside a school - variable speed limit to be implemented	Local street with a school in the area	30	50	Variable	30/06/25	8.15 - 9.45am 2.05 - 3.35pm
Hyslop Street	Lambert Street	North Taieri Road	HYSLOP_958	0.11	Reversal to previous speed limit	Local street with a school in the area	30	50	Permanent	30/06/25	
Hyslop Street	Lambert Street	North Taieri Road	HYSLOP_958	0.11	Road outside a school - variable speed limit to be implemented	Local street with a school in the area	30	50	Variable	30/06/25	8.15 - 9.45am 2.05 - 3.35pm
Freeman Close	North Taieri Road	6 Freeman Close	FREEMAN_959	0.12	Reversal to previous speed limit	Local street with a school in the area	30	50	Permanent	30/06/25	
Freeman Close	North Taieri Road	6 Freeman Close	FREEMAN_959	0.12	Road outside a school - variable speed limit to be implemented	Local street with a school in the area	30	50	Variable	30/06/25	8.15 - 9.45am 2.05 - 3.35pm

Minute Extract from Council, 30 April 2025

11 SPEED LIMIT REVERSAL LIST TO BE SUBMITTED UNDER THE SETTING OF SPEED LIMITS RULE 2024

A report from Transport provided an update on the proposed list of speed limit reversals that were required to be submitted under the Setting of Speed Limits Rule 2024.

The General Manager Climate and City Growth (Scott MacLean), Team Leader Regulation Management (Simon Spiers) and Transport Analyst (Maddie Pascoe) spoke to the report and responded to questions.

Moved (Cr Jim O'Malley/Cr Mandy Mayhem):

That the Council:

- a) **Approves** the submission to the Director of Land Transport, as required by the Setting of Speed Limits Rule 2024.

Motion carried (CNL/2025/001)

PROJECT FUND - FUNDING APPLICATIONS

Department: Civic

EXECUTIVE SUMMARY

- 1 This report provides a breakdown of project funding allocation and funding applications received for the Board's consideration. As this is an administrative report only, the Summary of Considerations is not required.

Project Fund

- 2 The net balance in the Project Fund available for allocation for the current financial year (2024/2025) is \$3,400, as \$1,000 is held in reserve for the Board's annual youth scholarship.
- 3 The following funds have been allocated to date for the 2024/2025 financial year by the Board.

Meeting Date	Amount	Recipient	Purpose
5 September 2024	\$1,000	Caselberg Trust	Installation of double glazing to the windows at the Artist's residence at Broad Bay
5 September 2024	\$1,500	Portobello Bowling Club	Installation of acoustic ceiling panels to the clubroom.
5 September 2024	\$300	Portobello School	Board grant to support school community activities
5 September 2024	\$300	Broad Bay School	Board grant to support school community activities
5 September 2024	\$300	Macandrew Bay School	Board grant to support school community activities
31 October 2024	\$120	Portobello Volunteer Fire Service	Donation in remembrance of founding OPCB member Bill Allen.
28 November 2024	\$440	Broad Bay Community Centre	Board grant to support production of quarterly community newsletters
28 November 2024	\$600	Portobello Incorporated.	Board grant to support production of quarterly community newsletters
3 April 2025	\$1000	Portobello School	Board grant towards the replacement of cover for the school/community pool.
	\$1,000	Board's annual youth scholarship (2024-25 year)	(Funds held in reserve)
Funds spent to date	\$6,560		
Balance of funds available \$3,440 to 30 June 2025			

Funding Applications

- 4 A funding application has been received from Save the Otago Peninsula (STOP) Inc Society for \$1,705.30 to support the purchase of equipment to better support pest plant removal on the peninsula. See Attachments A and B.
- 5 At the 23 August 2023 meeting the Board considered a funding application from Save the Otago Peninsula (STOP) Inc Society seeking \$2,164 towards the cost of herbicides and equipment for the Seek Weeds and Terminate (SWAT) group for pest plant control on the Otago Peninsula for the 2022-2025.
- 6 The Board considered due to the level of funding sought, although covering a 3-year period, that they would prefer to offer a lower grant, with the invitation for an application to be received in the 2024/2025 financial year for consideration.
- 7 A grant of \$1,000 was approved to assist with the cost of herbicides and equipment for pest plant control on the Otago Peninsula for the 2023-2024 financial year.
- 8 A funding application has been received from Otago Peninsula Museum and Historical Society towards purchasing a recorder and typist transcription kit for interviewing Peninsula residents who have live in the area all their lives.

RECOMMENDATIONS

That the Board:

- a) **Considers** the funding application from Save the Otago Peninsula (STOP) Inc Society of \$1,705.30 towards the purchase of equipment to assist in pest plant removal on the peninsula.
- b) **Considers** the funding application from Otago Peninsula Museum and Historical Society towards purchasing a recorder and typist transcription kit for interviewing Peninsula residents who have live in the area all their lives.
- c) **Notes** the Project Fund Report.

Signatories

Author:	Lauren Riddle - Governance Support Officer
---------	--

Attachments

	Title	Page
A	Save The Otago Peninsula (STOP) Funding Application	51
B	Equipment list	53
C	Letters of support to STOP application	54
D	Otago Peninsula Museum and Historical Society Funding Application	75

**Application for Funding from the
Otago Peninsula Community Board**

Name of group applying for funds: Save The Otago Peninsula (STOP) Inc Soc

Contact person: Lala Frazer

Address: [REDACTED]

Phone Number: [REDACTED] Email: stopincsoc@gmail.com

Position held: Grant Co-ordinator

Has your group made an application to the Board for funding support within the last five years?

Yes ☒

No ☐

If granted, what was that money used for? 2020 & 2023 Pest Plant control by SWAT (Seek Weeds and Terminate) which uses STOP as their funding agent

How much assistance has your group received previously from the Otago Peninsula Community Board? \$1,734 + \$1,000 (\$2,734)

Short description of present project: Pest plant control, mainly but not exclusively, in the Smiths Creek Catchment. mainly for the control of gorse. Gorse is the primary focus as it serves as a nursery plant for other, more invasive species, particularly those on the National Pest Plants Accord and under the Site-Led Pest Programme, contained within the Otago Regional Council Pest Management Plan. Removal of gorse will allow better control of the aforementioned pest plants which include Banana passion fruit & Bomarea.

Please attach any additional information which may be useful in explaining the project.

Total cost of project: \$ 3710.87

Amount already raised: \$ 2,005.57

Amount sought from Otago Peninsula Community Board: \$ 1705.30

Amount sought from any other Dunedin City Council source: \$ 0.00

How will the rest of the project cost be covered? STOP has covered the cost of purchasing and maintaining equipment through the sale of publications and donations from the community but has no money for this necessary expenditure.

- You are strongly advised to provide an itemised budget on a separate sheet.
- Please also attach any quotations for work, goods or services that you may have received.
- Please attach bank details (i.e. copy of bank statement) for the applicant.

What is the timeframe for completing the project? [OR the date of your event/project?] Ongoing

Is your project a one-off, annual or biennial event? One-off (Equipment Purchase)

How will the project benefit your organisation/club? What are the benefits to the wider community of your project? The supply of quality tools will enable STOP to better remove gorse from Smiths Creek. This will in turn enable STOP to better manage other pest plants. Removal of pest plants will improve the amenity value of the Smiths Creek and prevent their spread into neighbouring properties.

NOTES: Applicants should refer to the 'Discretionary Funding Guidelines' contained in the Board's Community Plan for guidance on the Board's priorities. Although applications will be considered on their merits, regard will also be had to ensuring a fair allocation over all the Board area. This application form and guidelines are also available on the Dunedin City Council website (www.dunedin.govt.nz).

Contact: Paul Pope (Board Chairperson) telephone 027 466 8446 or Lauren Riddle (Governance Support Officer) 474 3428 with any questions.

Deadline for Applications: Applications must be lodged no less than two weeks prior to each Board meeting.

**OTAGO PENINSULA COMMUNITY BOARD
DISCRETIONARY FUNDING GUIDELINES**

The following guidelines are suggested for the allocation of the Community Board Project Fund (\$10,000 annually).

There shall be three categories with funding going to each.

- Applications from community groups/organisations etc or projects initiated by the wider community.
- Projects and activities/Board member training initiated by the Community Board.
- Scholarship applications (refer to the separate application form and reporting requirements).

When considering any applications or projects the Board shall take into account the following:

- Community Outcome
- If more information is required
- Decision on project should be based on merit
- Letters of support from the community expressing the need for the project
- More than one quote must be provided with the application, ideally three.

It is a condition of funding that applicants will provide a report at the conclusion of the project. This should include (where appropriate) any photos and financial results.

- The report should be received within three months of the project's completion and include copies of receipts etc.
- Applicants are expected to provide a reasonable proportion of the funding themselves.
- Acknowledgement of the Community Board's grant to be included in the promotional material.

All allocations from the Project Fund will be supported by a resolution passed at a formal meeting of the Board.

The following are the meeting dates for 2025 at which applications will be considered (applications must be lodged no less than two weeks prior to each Board meeting):

Tuesday	4 February
Thursday	3 April
Thursday	22 May
Thursday	7 August
Thursday	11 September
Thursday	6 November (Inaugural meeting for the 2025-2028 triennium)

STOP Inc Soc Equipment Replacement and Repair Grant Application

Item	Cost	#	Total	Supplier	Web site link
Timbersaws Kiwi Lopper	\$224.00	2	\$448.00	Levin Sawmakers	https://www.timbersaws.co.nz/product/200-timbersaws-kiwi-lopper
Kiwi Lopper Straight Blade (Replacement blades)	\$87.30	5	\$436.50	Levin Sawmakers	https://www.timbersaws.co.nz/product/43-kiwi-lopper-straight-blade
Silky Ultra Accel Curved Saw	\$78.20	5	\$391.00	Levin Sawmakers	https://www.timbersaws.co.nz/product/1742-silky-ultra-accel-curved-saw-240mm
Lynn River Leather Pruner Suede Gardening Gloves	\$39.98	10	\$399.80	Mitre 10	https://www.mitre10.co.nz/shop/lynn-river-leather-pruner-suede-gardening-glove-medium-brown-tan/p/234563
Estimated Courier Cost	\$30.00	1	\$30.00		

Total Requested	\$1,705.30
------------------------	-------------------

Note 1: While not a quote, these are prices given on the companies' web sites from the only supplier, (in the case of the loppers), or our preferred supplier.

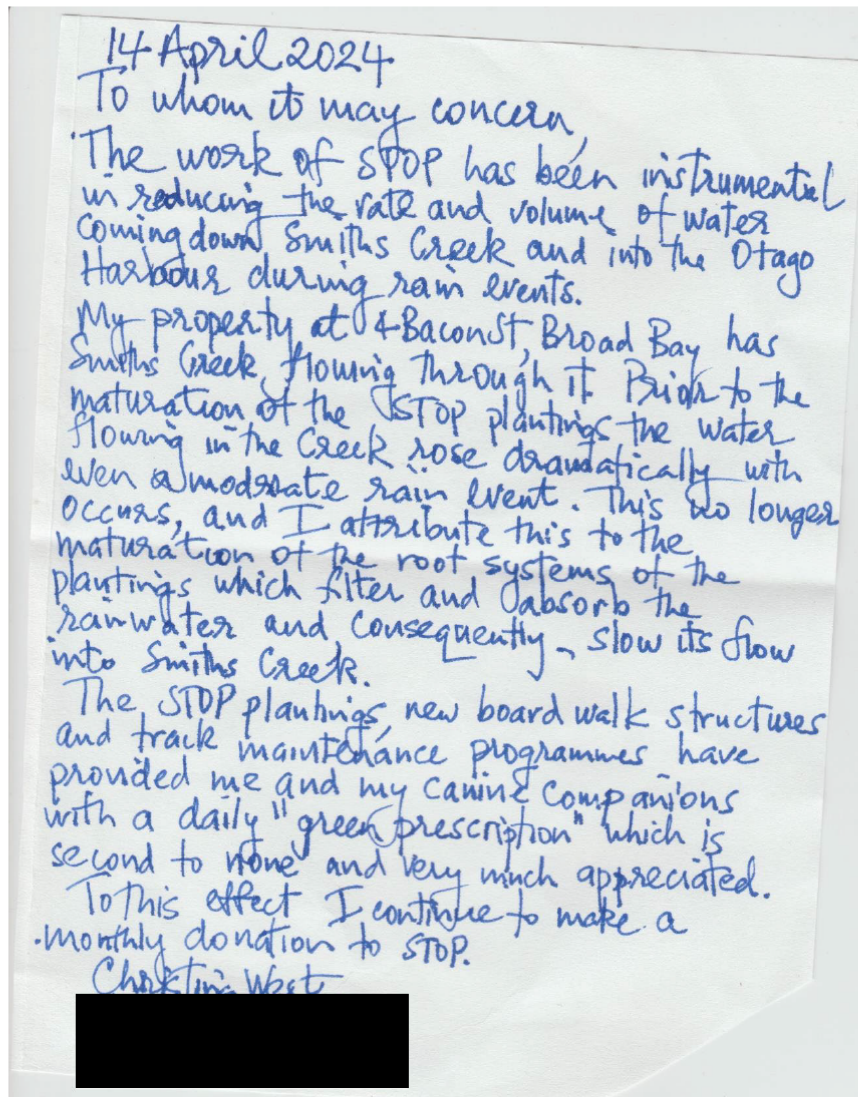
\$2,005.57

Equipment Expenditure and
Maintenance over past 12 months
(invoices available on request)

Total Cost of Project	\$3,710.87
------------------------------	-------------------

Note 2: Normally the cost of equipment replacement and maintenance is covered from income from donations and publication sales, but currently STOP does not have the funds available to

LETTERS & MESSAGES OF SUPPORT FOR SMITHS CREEK PROJECT



To whom it may concern ,
I am a volunteer at the Tuesday Smiths Creek working bees.
I also go walking in the area because I love seeing how the trees are growing and find walking amongst the plantings relaxing and invigorating. I think it's a form of "forest bathing" to walk amongst all the green trees , away from cars and crowds and built up areas .

It's also wonderful to see and hear the various birds, native and introduced singing and flying about and to see Smiths Creek flowing through the bush .

It's a great place to connect with others out walking and enjoying the environment on the tracks amongst the trees .

I look forward to enjoying the forest as it grows for many more years .

Regards

Mary Hammonds [REDACTED] >

So Why do I Bother with Future Forest:

I look forward to discovering a new track leading to even more trees. The walk is a great way to start Sunday morning

I now understand more about the native trees which make up Future Forest

I enjoy the process of "releasing"...making sure the weed mat is completely clear and seed heads do not come near the young trees

I enjoy the physical challenge of removing cages...builds upper arm strength....great for aging bones

I find whoever turns up to "work" (and it's not work...it's fun) in interesting, interested and makes morning tea a real pleasure. The morning tea bag caters to everyone's tastes and Lala's Bliss Balls are to die for!

But there's more to it....

Being with an older knowledgeable and inspirational woman (Lala) along with a young focussed knowledgeable guy (Duncan) is a privilege and a pleasure.

This project, and all those involved, feeds the soul....makes one's heart sing!

I've never planted a tree....I look forward to that experience come June 1!

NB it is always difficult to feel really passionate about something and inspire others, while not placing messages of "must do" on volunteers. Lala has achieved the perfect communication balance....long may the emails come each week and long may we see Future Forest grow and develop.

Clare M Dorking

[REDACTED]
[REDACTED]
[REDACTED]

[REDACTED]

To Whom It May Concern

My wife and I are keen walkers. In recent times the Smiths Creek area has become a preferred area to walk because of the planting which is making it such a great area to walk. There are nearly always others also enjoying this great amenity.

Warwick Ross [REDACTED]

To Whom It May Concern

Re Smiths Creek Regeneration Project.

Dear reader, I have had the pleasure of being involved for many Tuesdays in plantings, weeding etc in the Smith Creek Project. This project is extremely well organised by Lala and Duncan from the viewpoint of, work was always thought out, supplies and tools available, planned progress mapped out over many months.

Results though are much more than a bit of planting here or there.

Its an 85 year old man battling his way up the hill to plant trees and shrubs. He could not squat but laid down to do the planting. Still he was there having fun and helping make tomorrow better.

The talking / interactions between the group thrown together in common purpose, whom come from very diverse backgrounds, (rich and poor, working class and university educated) is enlightening and I in particular enjoy learning about the life my fellow worker has lead.

Legacy of creating new forest that can nurture native plants and wildlife into the future.

Pop up involvement by back packers or people just passing through for a few weeks or months again is a wonderfull lesson for them and older people and actually the reason they are in NZ often is to observe and participate in community initiatives.

Beautification project which impacts not just the immediate area but also the wider area of Broad Bay and the Otago Peninsular in that adding to diversity, adding to wildlife is impactful broadly and has great benefits to climate change and carbon capture.

Pride we can have as individuals and collectively as we walk up through the results of these efforts with our whanau on the way up Hereweka so "we can see where we have been". Created tomorrows forest.

Volunteers are a deep vein of resource and this project proves these efforts are wonderfull for all.

Thank you for your consideration

Bruce Cloughley [REDACTED] 5 Hi,

Hi

I am a longtime Broad Bay resident and have been privileged to undertake volunteer planting and releasing at Smiths Creek over the years.

The efforts of the past years are stunning and the value of the plantings for the environment and future generations of Dunedin residents will only increase over time.

It is an oasis of calm in a busy world, a lovely walk to soothe the soul and a gem in the peninsula crown.

It is a vote for the future of the peninsula

I look forward to the funding for the project been renewed so the good work can continue for the benefit of present and future residents.

Thank you

Mike Conway [REDACTED]

Smiths Creek Catchment Revegetation Project

Known as the "future forest ": this is an awesome place to spend time at our back door for those of us who live at Whakaohorahi, Broad Bay on Muaupoko/Otago Peninsula.

A place to walk, explore, plant native trees... We are fortunate to be kaitiaki of this whenua which has been made available to us all .

Our local school children recently spent several days there learning about the plants ,aquatic creatures, collecting apples from the orchard and following the tracks that have been made by a group of regular volunteers.

In December we are treated to a delightful musical celebration of "Carols on the Cone".

Our dogs especially appreciate the opportunity to sniff and wander around the "forest".

It is simply a "magical place " that we are so privileged to enjoy.

Thank you .

Penny Kagan [REDACTED]

It is with very great pleasure we write to you to convey how much we value the work done by STOP. Engaging and sustaining volunteers creatively and productively in large scale native tree planting is a challenging task, particularly on the steep terrain of Hereweka. Lala, Ian, Duncan and the entire STOP team do a magnificent job. The transformation of the Future Forest area is a wonderful tribute to their efforts and is appreciated by dog walkers, trampers, birdwatchers and all those who love to see nature flourish. As newcomers to the Peninsula we have derived immense satisfaction also from our social interaction with other volunteers and consider helping STOP to be a way of truly belonging to our wonderful local community.

Cheers

Toby Jones & Sue Streatfield
[REDACTED]

I usually walk in places that have none or only rudimentary tracks but on one particular occasion I was walking from the top of the future forest and eventually caught up with a group of older walkers with the last two lagging a little behind the others. When I caught up with the tail enders I was astonished and rather moved when I realized they were an elderly couple holding hands because one partner was completely unsighted.

This was the moment that I saw the value of good track infrastructure in a place like this. With help this area will soon be a fully fledged forest safe for people of any ability. Thanks to the volunteers and their efforts.

Kind regards.

Alf Webb.
Broad Bay.
[REDACTED]

MESSAGE OF SUPPORT FOR 'SAVE THE OTAGO PENINSULA' – Future Forest project

Visitors to the area:

I live next door to the area and am constantly delighted by the increased number of visitors passing by my place to visit the 'Future Forest'. It is a combination of locals and those from further afield, and what is particularly lovely is the range of ages, cultures/nationalities, and level of fitness/health of those enjoying the area. A connectedness always seems to develop amongst visitors as they come across others on the paths, via a shared smile, laugh, or longer conversation – between those who have met before but also between total strangers, who then leave the area feeling less of a stranger. Also a delight is the sound of the school children, full of excitement, chatter, and sheer joy as they walk along the road on their way to the area – even in bad weather.

A few years back a friend of mine from Nelson arrived for a few days and I took her to the future forest. The plants had not been long in the ground. When she returned recently, with only a few hours to spare for a visit, she was adamant that a top priority for her was another walk to the area to see how the trees were doing. This time she brought along her husband, wanting to show him what was being done. She was so impressed with the growth, and survival rate, of the trees.

Singsongs

The singalongs held at the bottom of the Future Forest are a highlight for me and many others during the year. Different age groups come along – from those learning to crawl or walk, to those of us at the other end of that journey, and lots in between. It is such a welcoming, encouraging, community experience even for those of us not so comfortable with singing in public usually. It is a time to meet new people and catch up with those we haven't seen for a while. Much joy.

Jane Ashman

12 April 2024

HEREWEKA HARBOUR CONE

The project to create swathes of native vegetation on this unique landmark has been a wonder to behold, thanks largely to the STOP-led commitment to build a future forest. The property, a working sheep farm, was bought by the Dunedin City Council in 2008, one of very few farms the public can walk across following poled routes. A key factor is the support of the lessee farmer to fence off riparian strips of pasture so that, in just 8 or 9 years of volunteer planting, releasing, weed control and board walk construction across wetter places, there has been amazing regrowth on the property.

Long may Hereweka, one of the largest revegetation projects in the Dunedin region, continue to receive support from sponsors and funders.

Neville Peat MNZM

"As a regular walker up and around Hereweka Harbour Cone I am delighted with the revegetation project conducted by STOP over the last few years which is now yielding very positive results. The birdlife has improved exponentially, it seems to me, and it is a wonder to see the 'Future Forest' growing up in front of my very own eyes. The vision and subsequent diligent, hard work of STOP has enhanced the area around Smith Creek immensely. Thank

you to all the workers, volunteers and funders of this superb 'grass-roots' project".

Janet Downs MA FRNZCGP DCH DRCOG

The future forest is a very well loved area of pathways used by people from all over the peninsula daily. The volunteers who do planting and maintenance of the tracks are experts who give their time to the project and share their knowledge with younger volunteers. My granny did so before she passed away and I know she loved her time there. It is wonderful to be able to walk in the forest and visit her bench made by another of the group, as well as the apple tree that she donated. I will enjoy taking my twins to the area and showing them all of her hard work. This is a very worthy cause for funding and will be great for future generations to enjoy.

Rosie Collier [REDACTED]

To whom it may concern

Regarding the 'Future Forest' at Broad Bay, a STOP project.

I am a resident of Broad Bay and often walk the future Forest tracks. It's a delightful place to be, offering different walks and the opportunity to see many native trees thriving. It's wonderful to see birds returning and the stream looking healthy. The area's success is due to the many hours of dedicated work by volunteers. The 'forest' is a treasured community asset, enjoyed by locals and visitors, young and old. My daughter helped to plant trees here on school projects, nurturing an ongoing interest in conservation and nature. Walking up through the young trees you can see how the vision is becoming reality, and with continued new planting, the forest is taking shape in a way that future generations will enjoy and benefit from.

Lucy Atkinson [REDACTED]

To whom it may concern,

We think that the Future Forest has a very positive impact on the local community and will give a lot of pleasure to future generations as well. It will also provide much needed habitat for native native birds and reptiles. It is a wonderful project!

Naomi and John Mottershead [REDACTED]

To whom it may concern

I'd like to thank STOP and all the members of the Broad Bay and peninsula community who have worked on the Smith's Creek project for their marvellous work in planting trees. I am a regular walker in the area who really enjoys watching the progress of the trees, the bird life and the reforestation of this beautiful area of the peninsula. Many of my friends and neighbours enjoy the area and it has become a destination for walkers.

I am grateful for this vital work to restore native forests and protect biodiversity. Although I am not able to take part in working groups right now, I look forward to the time when I can join in. I have donated to STOP and I hope that future funders recognise the great work they are doing.

Ngā mihi nui, Jen Olsen

[REDACTED]
[REDACTED]

Congratulations to all involved with the wonderful work done in the Smiths Creek area. The huge number of plantings, walkways, signage, enhancement of usable spaces, made it ideal for our community singalong (featuring main organiser Neville Peat on guitar). It is now a lovely place to be, protected against slips and other hazards.

Thank you!

Jim Mackay [REDACTED]

[REDACTED]
[REDACTED]
[REDACTED]
[REDACTED]
[REDACTED]

In support of STOP reforestation

Tēnā koutou,

I write in support of Smiths Creek Catchment Revegetation Project carried out by STOP. As a resident of Broad Bay I am proud that our village hosts this amenity and improves land owned by the City. I enjoy taking visitors from out of town and overseas to walk in the Future Forest and show them how sheep paddocks are already dramatically transformed by native trees. The steps and boardwalks make this a much more enjoyable and accessible walk than previously. The paths lead me along drainages and up ridges I would not otherwise explore. I also enjoy helping with the project, occasionally volunteering to plant saplings or release them from long grass and other competition. This work has inherent satisfaction in mitigating climate change and enhancing our city's open space, but also connects me to neighbors as I work with other volunteers from the Otago Peninsula and beyond. The structure of STOP working bees fosters a sense of community. A conversation at a working bee years ago led to a professional collaboration that continues to this day. It is not just the plantings that we are looking after! This project enhances the community in a range of ways, including a positive self-image, enhanced recreation, enhanced biodiversity and climate mitigation. I am deeply grateful to those whose financial contributions support it.

Ngā mihi,

Sigurd Wilbanks

Our family has been visiting Smiths Creek for 16 years and we have enjoyed watching the improvements and changes of these walking tracks. Our son while at Broad Bay school has done studies of the water quality as part of his school learning and participated in tree planting on a yearly basis while at Broad Bay school. He has told us what a special place this is and he will be bringing his children to walk around and explore Smiths Creek and its many tracks.

We have walked our dogs, enjoyed the wildlife and had family outings to this special place. I love this magical place. Thanks for all the hard work the community has done in creating this special place.

Meagan Rumble-Hurley [REDACTED]

To whom it may concern

I love that we have this community space in our village. I'm especially happy to have had a tree planted for my citizenship and to see the peasonsuch apples grow. It's a beautiful natural place and much appreciated.

Thanks

Sarah McDougall [REDACTED]

To whom it may concern:

As a longtime resident of Broad Bay, I would like to attest to the benefits the Smiths Creek revegetation project has brought to the community. Ironically for an area classified (at least by New Zealand Post) as rural, the Otago Peninsula has relatively little publicly accessible green space around its residential areas, much less areas of native bush. Parks and domains are small, and the main walking path (along Portobello Road) is paved and noisy. The project has greatly expanded options for walkers and runners.

When I first moved here, the only traffic-free pedestrian paths in Broad Bay were up Camp Street and from the end of Bacon Street along a fenceline up to Highcliff Road. The latter was (and is) narrow, very steep, and muddy (with a bend my husband and I still refer to as Dead Sheep Corner because that was the inescapable landmark for several weeks one winter). Today walkers can follow a number of paths through the revegetation area and appreciate the increasing diversity of native plants and wildlife. For example, I had never seen a native galaxid before spotting them in Smiths Creek. It is an enduring pleasure to see native trees and shrubs thriving on slopes that were once bare pasture, to watch fantails flitting through the growing trees, and to hear native birdsong in the flax bushes along the creek.

As an occasional volunteer at working bees, I have seen firsthand the tremendous effort that Lala Frazer and others have put into organising and tending the plantings, and I very much hope the project will be supported well into the future.

Erika Buky
[REDACTED]

[REDACTED]

I am proud to be a volunteer and donor to this highly successful project. This success is manifest in the high survival rate of the thousands of trees and the enthusiastic participation of scores of highly motivated voluntary workers. Increasingly this area is becoming much valued by recreational walkers often with canine company. A further bonus native fauna is documented to be thriving in Smith's creek.

Ian Breeze [REDACTED]

I am writing this letter to support the S.T.OP application for continued funding of the Smith Creek "Future Forest" program. As a professional biologist and international

visitor it has been a labor of love to volunteer for working bees and to see the scope of this project becoming manifested.

The managers of the project have the knowledge and foresight to place plants in habitats that optimize their chances of survival and growth and also utilize their specific characteristics to assure stable ecological successions. The benefits are multifold. Very significantly, erosion is greatly reduced and a natural, native soil with all associated bacteria, fungi, protozoa and invertebrates develops in the leaf litter beneath the trees. The water in the creek is clear and clean which provides a healthy aquatic habitat for all freshwater organisms. Runoff from Smith Creek into Otago Harbour is greatly reduced. This provides a healthier habitat for organisms living in the harbour. As the trees mature they play a larger role in reducing CO₂. This does have an impact on mitigating climate change at the local level. Tree foliage provides shade which reduces the temperature.

Not to be overlooked is the comradery and sense of community that develops among the volunteers who share ideas, hopes, and wisdom that extends far beyond Dunedin and even New Zealand. Dunedin becomes a place that many people wish to experience for its love of the natural heritage and abundance.

While land "development" eliminates natural habitats and has a worsening effect on climate change, projects such as the "Future Forest" bring true rejuvenation to sites that were ecological succession dead ends.

For me it has been an uplifting experience to see new, healthy saplings grow and to know that the benefits are extending into the air, soil and water around.

I thank you for your past financial support of this wonderful program and hope that you will continue to financially support it into the future.

Sincerely,
Albert Adams

[REDACTED]

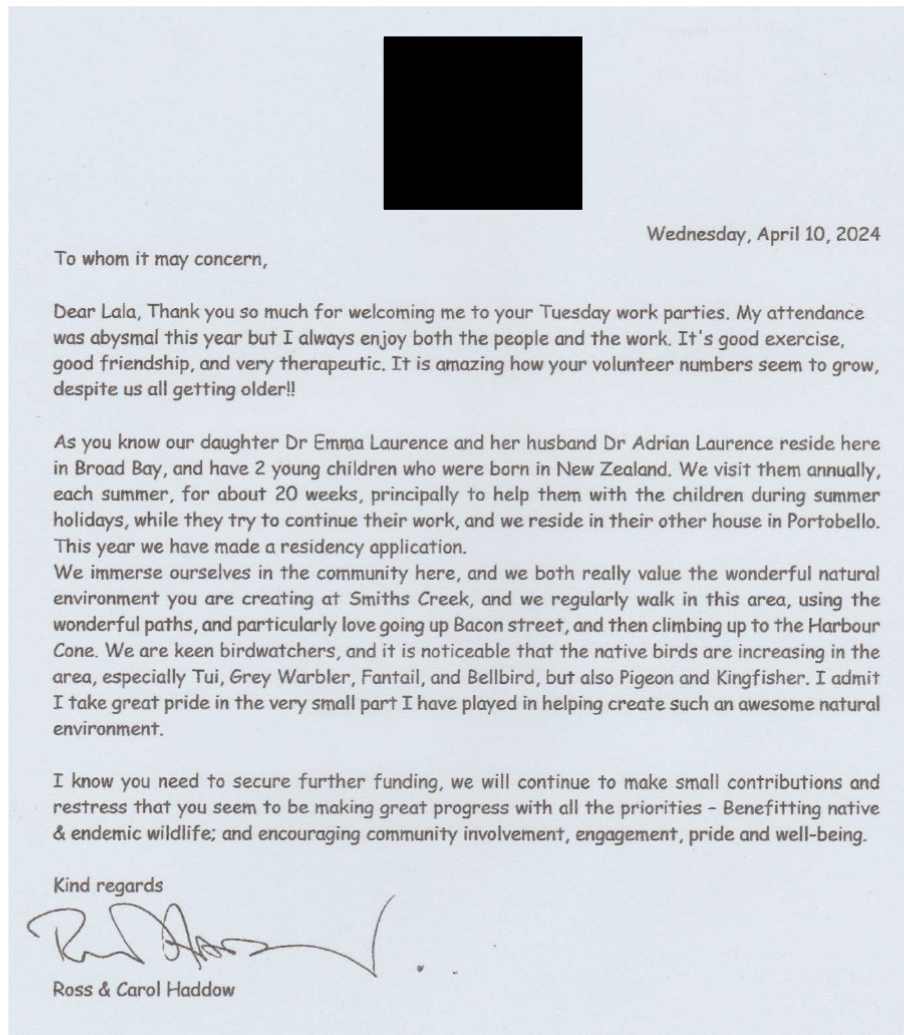
[REDACTED]

To Whom It May Concern.

For the past four years I have worked as a volunteer on Tuesday mornings planting trees, releasing earlier plantings and clearing areas of gorse, broom and other exotic plants that threaten to overwhelm native species. In that time it has been enjoyable watching and being able to appreciate the vastly improved habitat and resurgence in native bird numbers and species.

My extended family have found themselves being lectured on the benefits of the work completed while also enjoying visits to the area. They all comment on the range of work completed and how the habitat has improved, especially the quality of the aquatic environment of the Smiths Creek catchment. Thank you for the funds donated. They are playing a very important role in the improvement of the Peninsula.

Garry Kyle [REDACTED]



To Whom it May Concern

This area is an important part of my community. I walk my dog there, take friends there to admire the planting progress, meditate there, and participate in working bees when I can. The working bees are important for me in a number of ways. I enjoy meeting other locals, I feel useful, and I get more exercise.

Orma Bradfield




[REDACTED]
[REDACTED]
[REDACTED]

Dear Lala

It was a privilege to meet you last Tuesday (19 December 2023) when our group of 17 Dunedin 60 Plus Ramblers were having morning tea in the picnic area of Smiths Creek Catchment.

We started our Ramble with a walk around the Future Forest and after morning tea followed Smiths Creek track to Highcliff Road and onto the lower reaches of Harbour Cone and returned to Bacon Street via Bacon Track.

We were blessed with a lovely sunny day and our members thoroughly enjoyed the walk around the Future Forest. There were many comments about the native trees, strategic placing of seats throughout this part of our walk and the amount of volunteer hours that have gone into this project.

Personally, I have been in this area in recent years with the Dunedin 60 Plus Hikers and it is exciting to see the once small plantings in the Future Forest transforming into native trees.

As a group we appreciate all the volunteer work that has gone into this delightful area and being accessible for everyone.

Yours sincerely

Greg Johnston
Co-ordinator Dunedin 60+ Ramblers

To Whom It May Concern:

Kia ora

I started volunteering at the Smiths Creek site about a year ago and was welcomed by the group of dedicated individuals who have been nurturing this site for many years. The group is very well organised and a great way to connect with others in the community with similar values of enhancing our environment for the future. The fruits of our labour are a source of pride for those who have been involved from the beginning and are enjoyed not only by the local community but city wide. I have observed groups of walkers from town enjoying the tracks, tourists and dog walkers and frequently recommend it to friends as a place for good exercise, glorious views and an example of what can be achieved when people work together and are supported.

Ngā mihi

Anne Ryan [REDACTED]

To whom it may concern,
I would like to praise the volunteers and organisers involved in this incredibly worthwhile project - namely the planting and regenerating of the Smith's Creek area known as the Future Forest. I live on the Peninsula and often walk in this area. Work like this is so important as it starts to build a natural sustainable environment that will benefit the land and the native flora and fauna, and also enhances people's lives. We need forward-

thinking projects like these to give us hope for the future.
Shirley Jones

[REDACTED]

28 May 2024

To whom it may concern

Support for Save The Otago Peninsula Inc Soc's application for funding

I moved to the Otago Peninsula in 2021. Many of my new neighbours were quick to recommend walking at the STOP reserve at the end of Bacon Street, Broad Bay. Indeed, I walk there at least twice a week, heartily enjoying watching the progress of the native plantings, as well as meeting other people from the area similarly enjoying their walks. This space provides shelter during windy weather and a chance to get away from traffic noise and smell. I have no doubt that it contributes to the physical and mental wellbeing of the various users.

I have seen multiple groups at the Future Forest – including school children of various ages, and volunteers from other organisations. Their planting and weeding work all helps ensure the plants survive and indeed, thrive, thus improving the quality of Smiths Creek, as well as the variety of bird and bug life in the area.

I also frequent the Slip Slope reserve at the southern end of Broad Bay, another successful STOP venture. The plantings at both reserves are contributing to the mitigation of climate changes impact by stopping erosion and cooling the microclimates of the reserves and their surroundings.

STOP is an essential part of the wellbeing of the Otago Peninsula. I feel much more part of the community through meeting people at the two reserves. We often talk about how the Bacon Street reserve is our 'happy place' and we take a lot of pride in it. I have made donations to STOP and will continue to do so, as I view it as a very worthy organisation that is making real, positive impact on the Otago Peninsula's people and environment.

Regards

Kate Berard

To whom it may concern;

We live in Oxley Cres, Broad Bay and are both retired.
We walk up Bacon St, and into the various paths through the re-forested areas at the end
DAILY.

It is such a pleasure to see the growth and success of these plantings and it gets us out of
the house thus giving us exercise.

We have grandchildren who moved to Gisborne a few years ago who visited recently who
were amazed at the size of the trees and flaxes they helped plant as part of their efforts at a
Broad Bay School planting bee.

This area has also provided a secluded outdoor venue for a very special annual event in
December; a community carol singing. This has been brilliant in bringing locals and others
from further afield together for some fun.

David and I also host international tourists and they enjoy having such a range of native
plants to view within walking distance, thanks to the donations of funds and plants and the
efforts of large numbers of volunteer workers.

What a wonderful asset this area is for the people of Broad Bay and Dunedin..

Regards
Alison Thornicroft
Kanuka Cottage

As long term residents of Broad Bay Dunedin we fully appreciate the opportunity
that STOP has provided with pest control and revegetation programs. Our family
uses the Smiths Creek and Hereweka tracks regularly with benefits of exercise and
green space connecting. The health of body and mind are supported when the bush
is healthy. Please consider the continued enhancement of the Otago Peninsula as a
worthy cause for funding.

Sincerely
Chris Charteris-Wright



[REDACTED]
Broad Bay
Dunedin 9014

7 May 2024

To Whom It May Concern,

Smiths Creek Catchment Revegetation Project

I'm a frequent volunteer and user of the 'Future Forest' at Smiths Creek (and my husband is too). I have learnt much about the original forest vegetation of the area through planting and releasing trees and watching them grow. Where once there was open pasture, I now see trees on their way to maturity all around me. I enjoy the peace and tranquility of the revegetated area. I have also grown more aware of the need to control exotic weeds such as banana passionfruit. My husband, a retired carpenter, relishes the opportunity to offer and hone his skills in constructing boardwalks and other track infrastructure.

I visit Smiths Creek three or four times a week with my dog or dogs, meeting other dog owners and walkers, and sharing stories with them. Since there is no dog park on the Peninsula, where dogs can be safely off leash, Smiths Creek offers an accessible open space for dogs to explore, and occasionally catch a hare or rabbit. I've also met many runners using the area for off-road training.

The planting of native trees not only adds to the biodiversity of the Peninsula but also locks up carbon, so helping to mitigate climate change. I know that the area has been used by Broad Bay School as an educational experience for children to learn about native fish, water quality, and plants.

Working as a volunteer is an opportunity to meet other local people keen to see our natural environment preserved and enhanced. Some of us are retired, but we love to see families coming out to join working bees. At a recent working bee in the school holidays, I counted 12 children all enjoying the fun of releasing trees from long grass. Also, some of our volunteers are people who might not otherwise get out in nature without the support of a group like STOP. I've assisted with varied groups, such as students during Orientation Week, taking the opportunity to get out of the city.

Smiths Creek and the Future Forest is becoming known as a popular place for community members to contribute as a volunteer or just to take time out. It has been used as a venue for community Christmas carol singing and birthday celebrations. But it is not just locals - people come from the city to enjoy the area. We are very proud of our special place.

Yours sincerely



Jenny Winter

██████████
██████████
Broad Bay
Dunedin 9014

To Whom It May Concern

The Smiths Creek Catchment Revegetation Project (The Future Forest)

The Future Forest is a project to be proud of. It is an absolute delight to see a place that is being regenerated instead of redeveloped.

I walk there regularly, often accompanied by my grandchildren and other visitors. It is a safe and peaceful place to explore, with a diversity of paths, plantings, places to rest, contemplate nature and take in the views.

Recently I showed someone round who was planning a route for a walking club and I subsequently accompanied the group when the day of the outing arrived. They were interested and amazed to see the work that has been done there, so much so that the group is planning to return to help to do some planting and maintenance.

Seeing the area has also inspired people to invest in trees to commemorate special occasions, and some visitors from overseas to donate plants to offset their carbon footprints - a rewarding thing for them and for the Forest!

Joining a working bee in the Future Forest is always a fulfilling experience. Whether planting trees or releasing existing plantings, it is good to be with other people, out in the fresh air, surrounded by green and knowing you are doing something worthwhile.

In the years I have been involved in these activities I have seen amazing growth. I only wish I could come back in another 100 years to see how the forest has increased and matured.

Long may this great work continue.

Tessa Mills

To whom it may concern,

We often visit the future forest area. We enjoy its peace and tranquillity and the names by each tree adds to our interest and knowledge. It is becoming a well known walk for Dunedin people. Yesterday amongst others, we met a lady from Christchurch and a family from France which suggest it is gaining recognition far and wide.

Thank you to all the volunteers who are creating this wonderful asset for the peninsula and the wider community.

Yours faithfully,

Alister Young and Marion Dent.

To whom it may concern,

My family and I traveled from Palmerston North to explore Dunedin these School Holidays. We were fortunate to discover the Future Forest and enjoyed a 45 walk around the tracks. My 3 year old had a lovely time following the tracks and board walks. A highlight for him was sitting on a large rock, enjoying the view and having fantails fly around him. My 1 year old loved seeing all of the birds flying around.

What a fabulous park to have in the community. A perfect place to exercise, learn and explore for all ages. The huge amount of work and planning was evident, and for that we are thankful to all involved.

Kind regards,

Amy Young



To Whom It May Concern,

Living on the Otago Peninsula, we are fortunate to be surrounded by natural beauty around nearly every corner. But there is something special about the Smiths Creek Catchment area. Not only is it a wonderfully convenient and accessible spot for a walk with or without our dog, it also serves as real inspiration to witness what the community can achieve in restoring and protecting our natural environment. The ongoing development and improvement of recreational tracks and the extensive tree planting project is a real testament to the dedication and drive of the volunteers and other team members. We are constantly amazed by the stunning and varied landscapes along the different routes. What was once pastoral land is slowly but steadily being transformed into the "future forest" and more which undoubtedly will be enjoyed by generations to come. The seeds are quite literally being planted for something truly remarkable! We hope this important effort will continue to receive the needed support and funding to continue.

Sincerely,
Kipp and Gianna Savoie

To whom it may concern

It is always with pleasure that I attend the volunteer sessions in Smith's Creek Revegetation Project under the auspices of STOP, for planting native trees with neighbours and friends, mostly from broad Bay. We further facilitate the success of what we plant by weeding and decaging the trees as appropriate at another time of the year. In these activities we are working as a Community to a common purpose. Furthermore, in this way I feel that I am activating my personal passion as an environmental agent, fulfilling our collective need for the amelioration of climate change risk.

I have acquired a set of artistic and constructional skills over a working life, which I have made available to solve problems or fulfil needs as they have arisen. For example, I have designed, constructed and displayed maps of the site and created signage as required. As the acquired trees and their support carry a cost, community members may choose to donate money to finance trees to memorialise loved ones or commemorate notable birthdays. My wife and I combined our birthdays to 150 years and donated 150 trees. Such donations are usually notified by the creation and siting of a named bench, (currently 13 in number, widely distributed) which I have been pleased to construct at no cost using recycled timber.

I feel that these 'extra' activities to be 'payback' for the pleasure of living where we do and having a common purpose with friends and neighbours.

The trees we are planting here are part of our ongoing desire to transform the tree cover to a semblance of

what it must have looked like to the first settlers and create an appropriate and supportive habitat for birds. We have come to call this “The Future Forest”. It is a given, though, that none of the above is possible without the financial support of external entities responding to STOP’s requests for funding on an ongoing basis.

Vic Mills [REDACTED]

I know the wonderful impact that the smiths creek plantings are having on rehabilitating our whenua, plants that belong here and birds that belong here are both making a recovery at a greater pace, no doubt it’s positively impacting insect species, and land stabilisation and land stabilisation, and water too.

But along side those invaluable effects are the impact on our tangata...

As a wee warm sheltered place to sit a while and retreat from my worries, as a place for gentle exercise or hill climbs while running is no longer an option for me, as a place of beauty and bird song to reconnect with the world - all on our near doorstep! But not just me, for my daughter and her friends to it a favourite place to walk to and immerse themselves in time and place and strengthen their connections to the land and to each other, and it is a haven to escape to when the world feels overwhelming. Local tamariki love watching it grow and change over the years, and they benefit immensely from knowing it is a place where they have had a positive impact on the outcomes in this world and it counter balances the stress so many children feel about human impact, climate crisis and pollution that they feel responsible for but unable to control... here is an actual improvement that they helped to make and that they can visit and monitor and continue to help with.

In a mental health crisis and a cost of living crisis, time in this place is free and it is therapy, and it is a legacy that lets our kids know that their positive efforts matter.

Thank you
Joanna McDouall
[REDACTED]



29/04/2024

To whom it may concern,

I am pleased to endorse the many successful and inspirational outcomes of “Smiths Creek Catchment Revegetation Project”.

My personal observations begin by participating in a planting day organised by the community group A Rocha. My first visit to the site was literally washed out-you should check cancellation emails !-however we were able to enjoy the recreation possibilities of the different areas. My friend and I walked many of the tracks and thoroughly explored the area. We were able to appreciate both the tracks and the many emerging planting projects. Wet feet didn't seem to be an issue.

My next visit was more successful, along side the A Rocha team, we spent a constructive afternoon planting out one of the higher areas of the catchment. The work was well planned and the planting protocols seemed very professional. Rabbits and weeds needed to be kept well away from the new plants. We enjoyed good company, a refreshing afternoon tea and a contemplative sit and view to finish the work. Enjoying the creation!

These plantings will only improve the quality of the ecosystem and its biodiversity within the catchment over the next many years. I have supported at least two field trips into Smiths Creek in the last six months. This included fish traps and the catch included Banded Kokopu, Tuna and Common Bullies, all indicate quite a healthy aquatic habitat.

The tree planting and tracks provide attractive recreational opportunities as well as assisting in the mitigating climate change.

STOP has done well to galvanise many community groups into participating and making a significant environmental enhancement.

The project has achieved these successes:

- *Large numbers of volunteers participating in working bees*
- *By continuing to have people make financial donations to the project.*
- *Positive feedback from participants and recreational walkers.*
- *A continued high survival rate for the plants (currently 90 to 95% survival after 3 years in comparison to the 75% survival expected from the government's Million Trees Project)*
- *Surveys and eDNA sampling that indicates that native aquatic wildlife remains stable or improving.*

I am chairperson of ECOTAGO CHARITABLE TRUST. Our trust strongly supports this project.

Yours faithfully

Andrew Innes.



Tuesday 7th May 2024

To whom it may concern

I am writing on behalf of Volunteer South | Kaitiāo o te Taitonga to express our support for Save the Otago Peninsula (STOP) and their important kaupapa of protecting and enhancing the natural environment of the peninsula.

Kaitiāo o te Taitonga/Volunteer South Trust supports around 600 non-profit and community organisations across the Southern Region to involve volunteers, as well as connecting & supporting individuals to access meaningful and rewarding volunteer opportunities that enable them to make a real difference in their own communities.

STOP are one of our key conservation member organisations in Dunedin - they facilitate everything from large-scale one-off working bees where hundreds of trees are planted, to regular groups of volunteers who protect biodiversity year-round. They've built a welcoming, inclusive environment with ways to get involved for people of all skill levels, interests and ages. Many of the members of the regular groups have found friendship, community and sense of purpose.

The amount of knowledge and aroha for conservation and the Bacon St Reserve in the team at STOP is not to be understated, and you can feel this first hand when you visit the site. We were impressed to hear of their high planting success rates and see the amount of wildlife returning to the area! We greatly value STOP as a key conservation organisation in Dunedin, and we gladly support their application for funding.

Please feel free to contact me if you have any further queries.

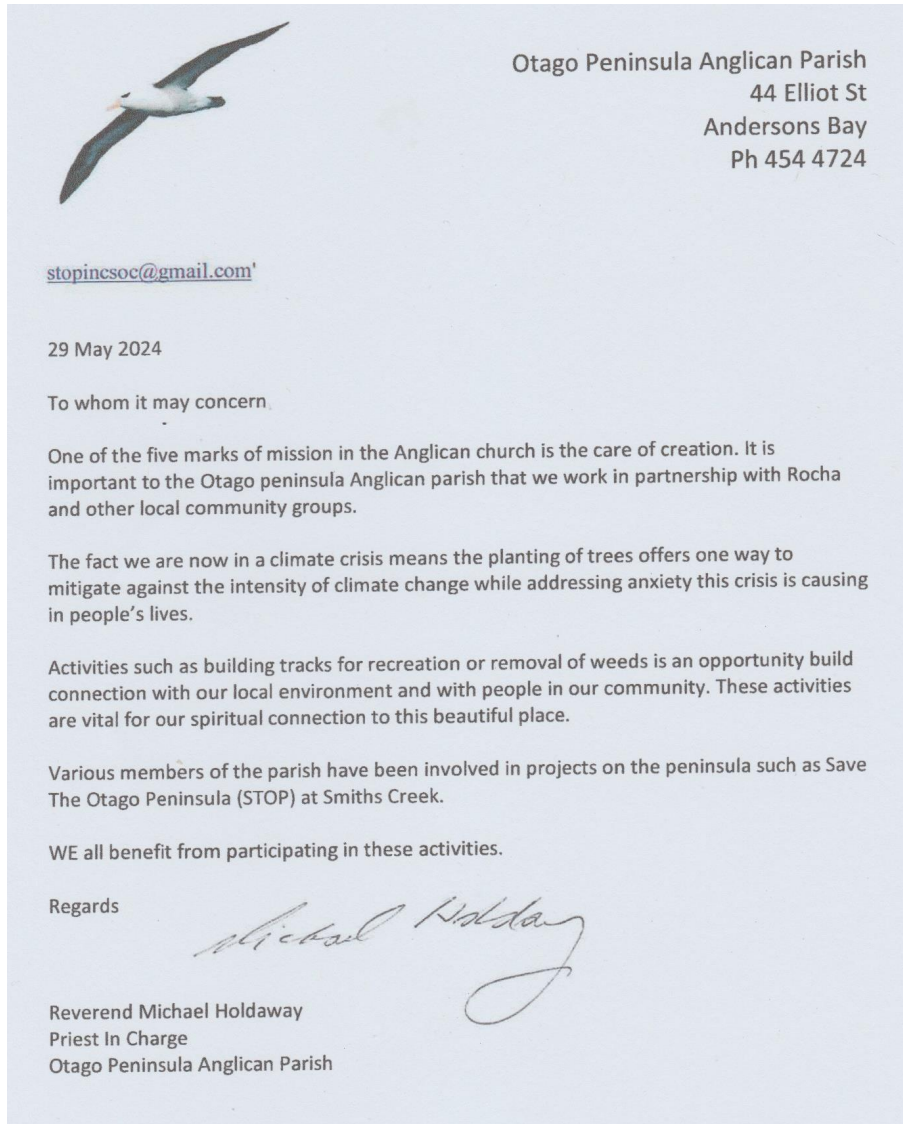
Regards

Peter Claman

Community Connector - Supported Volunteering

Volunteer South | Kaitiāo o te Taitonga

• 1st Floor, Dunedin Community House, 301 Moray Place, P.O. Box 5021, Dunedin 9058 •
Phone (03) 4715706 • Email: klaman@volunteersouth.org.nz



**Application for Funding from the
Otago Peninsula Community Board**

Name of group applying for funds: Otago Peninsula Museum & Historical Soc.

Contact person: Warren Morris

Address: 417 Harrington Point Rd, Portobello

Phone Number: [REDACTED] Email: [REDACTED]

Position held: President

Has your group made an application to the Board for funding support within the last five years? Yes ☒ No ☐

If granted, what was that money used for? Publication of Book "Otago Peninsula Then and Now"

How much assistance has your group received previously from the Otago Peninsula Community Board? \$1,000.00

Short description of present project: Purchase of recorder and typist transcription kit for interviewing Peninsula residents who have lived here all their life and recorde type up their stories. last done in 2002/03

Please attach any additional information which may be useful in explaining the project.

Total cost of project: \$ 511.88

Amount already raised: \$ 250.00

Amount sought from Otago Peninsula Community Board: \$ 261.88

Amount sought from any other Dunedin City Council source: \$ -

How will the rest of the project cost be covered? Museum funds as required

- You are strongly advised to provide an itemised budget on a separate sheet.
- Please also attach any quotations for work, goods or services that you may have received.
- Please attach bank details (i.e. copy of bank statement) for the applicant.

What is the timeframe for completing the project? [OR the date of your event/project?] _____

Is your project a one-off, annual or biennial event? This is an ongoing project

How will the project benefit your organisation/club? What are the benefits to the wider community of your project? once typed up interviews will be available for anyone to read and will be an important part of our local history.

NOTES: Applicants should refer to the 'Discretionary Funding Guidelines' contained in the Board's Community Plan for guidance on the Board's priorities. Although applications will be considered on their merits, regard will also be had to ensuring a fair allocation over all the Board area. This application form and guidelines are also available on the Dunedin City Council website (www.dunedin.govt.nz).

Contact: Paul Pope (Board Chairperson) telephone 027 466 8446 or Lauren Riddle (Governance Support Officer) 474 3428 with any questions.

Deadline for Applications: Applications must be lodged no less than two weeks prior to each Board meeting.



**OTAGO PENINSULA MUSEUM
& HISTORICAL SOCIETY INC.**

54 Harington Point Road, Portobello, Dunedin 9014

At the Otago Peninsula Museum Committee meeting on Wednesday 7 May 2025 a resolution was unanimously passed that we apply to the Otago Peninsula Community Board to help with funding for new equipment to enable us to interview folk and record their stories of their life living on the Otago Peninsula.

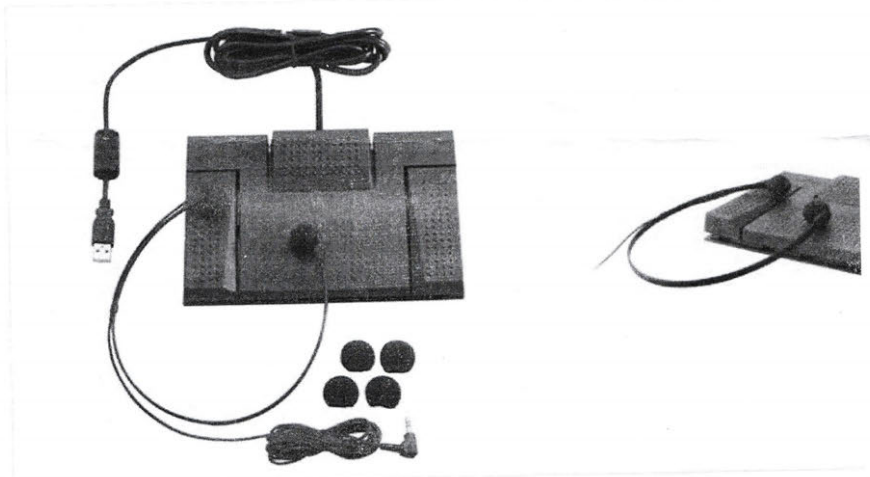


Warren Morris
Museum President

3/3/25, 4:17 PM

Typist Transcription Kit Olympus AS-2400 | Kiwi Office

kiwioffice
the right stuff for your business



Typist Transcription Kit Olympus AS-2400

Code: 147138

\$328.88 inc GST

✓ Accepting Orders

🚚 ETA 2-4 Working Days

Add a product note

A fantastic addition to your Olympus Dictation Sys

The AS-2400 Transcription Kit is compatible with all Olympus Digital Voice F transcription solution.

Supplied with DSS Player Standard Transcription Software CD-ROM, RS-28H

3/4/25, 4:16 PM

Digital Recorder Olympus WS-883 8GB | Kiwi Office



Digital Recorder Olympus WS-883 8GB

Code: 147151

\$183.00 inc GST

✓ In Stock

🚚 Delivery 1-3 Working Days

Add a product note

The OM SYSTEM WS-883 is a compact and versatile stereo voice recorder, for recording interviews, lectures, and conversations on-the-go. Its innovative design and advanced technology ensure high-quality recordings every time.

True Stereo Microphones

The two low-noise directional stereo microphones with a 90° layout deliver true stereo sound.

PROJECT FUND - YOUTH SCHOLARSHIP 2024/25

Department: Civic

EXECUTIVE SUMMARY

- 1 This report is to provide information on Youth Scholarship Fund. As this is an administrative report only, the Summary of Considerations is not required.

Project Fund

- 2 The balance in the Project Fund available for allocation for the current financial year (2024/2025) is \$3,400, as \$1,000 is held in reserve for the Board's annual youth scholarship.

Youth Scholarship applications

- 3 The deadline for the 2024/25 applications has been extended to 31 May 2025 due to no Youth Scholarship Applications being received by the original closing date. A copy of the Youth Scholarship Application is attached.
- 4 As the Board's last scheduled meeting for the 2024/25 financial year is 22 May 2025 the Board is asked to confirm the date of an additional meeting to be held on Monday 16 June at 10am to consider any Youth Scholarship Applications received.
- 5 If the Board resolves to have an additional meeting it will be held in the DCC Council Chamber, Level 2, Dunedin Public Art Gallery, the Octagon, Dunedin.

RECOMMENDATIONS

That the Board:

- a) **Approves** an additional Board meeting to be held on Monday 16 June 2025 to be held in the DCC Council Chamber, Level 2, Dunedin Public Art Gallery, the Octagon, to consider any Youth Scholarship Applications 2024/25 received.

Signatories

Author:	Lauren Riddle - Governance Support Officer
---------	--

Attachments

Title	Page
↓A OPCB Youth Scholarship grant application form effective 8 Feb 2024	80



Otago Peninsula Community Board Scholarship

APPLICATION FORM

Section A

Full name: _____

Date of birth: _____ Age: _____

Phone: _____ Cell: _____

Address: _____

Email: _____

Full names of parent or guardian or spouse:

Full name: _____

Address: _____

Phone: _____ Email: _____

Relationship to applicant: _____

Nominated Reference Person:

Name: _____

School: _____

Contact Details: _____

Section B

Have you made application to any other organisation for a scholarship or funding assistance? **Yes / No**

If Yes, provide the name of the organisation/s and result of their decision:

Please note: Applications must be received before 5:00pm on 30 April each year to be eligible for consideration.

Section C

Course of study intended:

Name of tertiary institution: _____

*Please provide confirmation that you have been accepted for this course of study.
(A letter from the administrator of your major department of study will suffice).*

Section D

Are you entitled to a student allowance? **Yes / No**

What family or other financial support will you receive?

Privacy Act 1993

In providing information contained in this application the applicant consents to its use by the Otago Peninsula Community Board in the processing of this application, including the making of enquiries from such persons or organisations deemed appropriate for the full consideration of the application by the trustees.

The applicant also consents to the use of their name and photo for publicity purposes.

The trustees shall ensure that any information obtained in processing this application shall be securely stored and not available to any person or organisation except those persons involved in the consideration of the application. The applicant shall be entitled to view such information and correct it if necessary.

The information herein shall only be used for any the purpose of this application unless the consent of the applicant is obtained.

"I declare that the information contained in this application is true."

Applicant's signature: _____

Please note: Applications must be received before 5:00pm on 30 April each year to be eligible for consideration.

Date: _____

Please note: Applications must be received before 5:00pm on 30 April each year to be eligible for consideration.

COMMUNITY PLAN 2025-2026

Department: Civic

EXECUTIVE SUMMARY

The Community Board Plan is tabled for discussion at each meeting for the purpose of review and update as required by the Board.

The Board's Community Plan assists to contribute to the Council's 10-year plan with focus on:

- 1 **new and current priorities** (in order of importance with justification and estimated costs for each) for inclusion in the DCC 10-year Plan
- 2 **items the Board would like for delivery to the community** (for items that would not require support or funding from the DCC, over and above the Community Board funding)

Attachments

There are no attachments for this report.

BOARD UPDATES AND REPORT BACKS

Department: Civic

EXECUTIVE SUMMARY

- 1 Board Members will provide verbal updates and report backs on portfolios and activities including:
 1. **Keep Dunedin Beautiful** – Cheryl Neill
 2. **Harwood (and Lower Peninsula)** – Cheryl Neill
 3. **School programme/scholarships** – Cheryl Neill/Stacey Kokaua
 4. **Peninsula Roads** – Lox Kellas
 5. **Back Bays (and Highcliff)** – Lox Kellas
 6. **Civil Defence/Community Response Planning** – Lox Kellas
 7. **Te Umu Kuri (Wellers Rock)** – Paul Pope/Edna Stevenson
 8. **Macandrew Bay** – Edna Stevenson
 9. **Broad Bay/Portobello** – Stacey Kokaua
 10. **Harington Point/Otakou** – Hoani Langsbury
 11. **Rūnaka Liaison and Biodiversity** – Hoani Langsbury
 12. **Tomahawk** – Paul Pope
 13. **Social networks/communications** – Paul Pope

RECOMMENDATIONS

That the Board:

- a) **Notes** the Board updates.

Attachments

	Title	Page
↓A	Community Resilience minutes	85
↓B	Rules and responsibilities for Community Resilience Groups	87

Community Resilience Workshop Minutes

Date: 5 March 2025

Time: 09:00am

Location: Dunedin City Council Emergency Operations Centre, 54 Moray Place, Dunedin

Attendees

Sandy Graham	Dunedin City Council (DCC), Chief Executive
Mike Perkins	Dunedin City Council, City Development Engineer & Civil Defence Liaison
Claire Charleton	Emergency Management Otago, Advisor – Dunedin City
Chris Brooker	Emergency Management Otago, Advisor – Dunedin City
Taylor Hendl	Emergency Management Otago, Advisor – Dunedin City
Paula Cathie	Emergency Management Otago, Coastal Team Leader
Glenn Mitchell	Emergency Management Otago, Group Team Leader
Tom Dyer	Otago Regional Council, General Manager Science & Resilience
Alasdair Morrison	Waikouaiti Coast Community Board, Chair
Andy Barrett	Waikouaiti Coast Community Board
Andrew Simms	Mosgiel-Taieri Community Board, Chair
Dean McAlwee	Mosgiel-Taieri Community Board
Anna Wilson	Strath Taieri Community Board
Paul Weir	Saddle Hill Community Board, Chair
Paul Pope	Otago Peninsula Community Board, Chair
Lox Kellas	Otago Peninsula Community Board
Ange McErlane	West Harbour Community Board, Chair

1. Welcome and Introductions

- Participants introduced themselves, including their experience with emergency management.

2. Objective of Workshop

- Sandy clarified that the objective is to define the role of Community Boards in community resilience and identify areas requiring additional support.
- Discussion on overlapping responsibilities in response efforts.

3. Presentations

- Overview of the statutory obligations of territorial authorities, the National Disaster Resilience Strategy, and Emergency Management Otago's Community Resilience Framework.
- Current Community Resilience Groups and Community Board structure.
- Tour of the bunker and its operational functions.

4. Discussion on Community Resilience Groups & Community Boards

- Noted the terminology change from 'Community Response Groups' to 'Community Resilience Groups' to better reflect their focus on resilience and readiness.

- Evaluated the necessity of both a Community Board and a Community Resilience Group.
- **Historical Role of Community Boards:** Traditionally acted as "eyes and ears" but require clearer role definition.
- **Waikouaiti:** Raised questions about equipment needs, funding, and accountability for resilience efforts.
- **Mosgiel Taieri:** Established framework with direct liaison to key emergency services and a directory of key contacts and resources.
- **Funding & Resource Allocation:** City has \$100,000 for community resilience, requiring a clear plan for allocation and distribution.

5. Challenges Identified

- Role differentiation between Community Boards and Community Resilience Groups.
- Establishing membership requirements of Community Resilience Groups.
- Ensuring clarity in communication channels during an event.
- Defining accountability and governance of Community Resilience Groups.
- Need for consistency beyond electoral terms.
- Terminology alignment to avoid confusion.

6. Operational Concerns

- **Information Flow:** Importance of structured communication between the Community Board, Community Resilience Groups, and the Emergency Operations Centre during an event.
- **Decision-Making in Emergencies:** The local controller is responsible for major decisions during a response. It is crucial that Community Resilience Groups and Community Boards understand their mandate and know how to escalate issues beyond their scope to the Emergency Operations Centre.
- **Civil Defence Centre Locations:** Clarification needed on the primary Civil Defence Centre location in each community.

7. Proposed Actions

- Document the agreed roles and responsibilities of Community Resilience Groups and Community Boards, incorporating the discussions and outcomes of the meeting.
- Establish and document clear communication channels between Community Resilience Groups, Community Boards, and the Emergency Operations Centre during a response.
- Explore the delegation of a resilience portfolio to the Community Boards from the DCC.
- Identify necessary resources and funding mechanisms for Community Resilience Groups.
- Confirm designated locations for Community Emergency Hubs (community-led) that can, if necessary, be transitioned into Civil Defence Centres (council-led) within each community.
- DCC to review civil defence induction process for Counsellors.

Meeting Adjourned at 11:36am.

Community-Led Resilience: Defining Roles for Community Boards and Community Resilience Groups in Dunedin

Contents

Background.....	3
Community Resilience Strategy.....	3
Responsibilities and Roles Between Community Boards and Community Resilience Groups in Dunedin	4
Community Resilience Workshop (5 March 2025).....	4
Community Boards' Responsibilities:	4
Community Resilience Groups' Responsibilities:.....	4
Emergency Management Otago's Role:	5
Figure 2: Relationship Structure Between Community Boards and Community Resilience Groups in Dunedin.	6
Reference List	7

Background

The Civil Defence Emergency Management Act (2002) mandates local authorities to coordinate, through regional groups, planning, programmes, and activities related to civil defence emergency management in the areas of reduction, readiness, response, and recovery (Civil Defence Emergency Management Act, 2002, s.3).

Community resilience, as outlined in New Zealand's National Disaster Resilience Strategy (2019), refers to the capacity of communities to adapt, withstand, and recover from emergencies and disasters by utilising local knowledge, fostering strong social connections, and implementing effective planning to reduce risks and enhance overall preparedness.

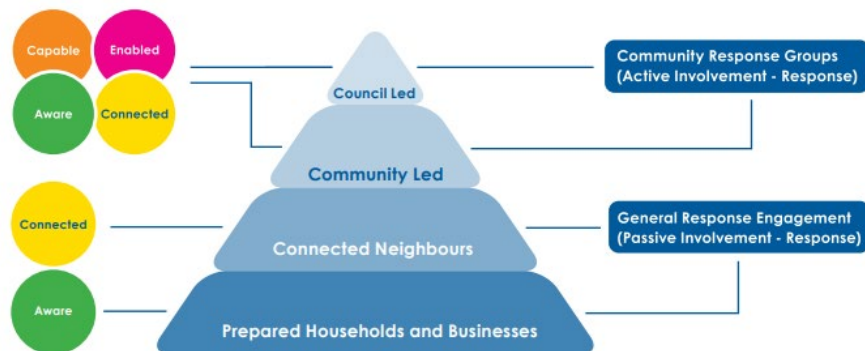
In Dunedin, Community Boards serve as a vital connection between local councils and communities, representing local interests, advocating for community needs, and supporting initiatives that enhance well-being. Covering areas that include 31% of Dunedin's population, they play a significant role in community engagement and local decision-making (Eagle Technology et al., 2024). In disaster resilience, Community Boards are essential in promoting preparedness, supporting local emergency planning, and strengthening ties between residents and emergency management organisations to ensure a coordinated response and recovery.

The purpose of this document is to outline the structure and processes for achieving community resilience in Dunedin through the collaboration of Community Boards and Community Resilience Groups. It will define the roles and responsibilities of each entity—Community Boards, Community Resilience Groups (CRGs), and Emergency Management Otago (EMO)—as well as the communication framework to be followed when the Emergency Operations Centre is activated during a response.

Community Resilience Strategy

Emergency Management Otago's Community Resilience Strategy (2023) outlines a structured pathway for enhancing community resilience. The strategic approach, depicted in Figure One, illustrates the systematic approach of transforming resilience theory into operational practice by fostering capable, enabled, aware, and connected communities.

Figure 1: Integrated Community Resilience Framework



This strategy emphasises empowering communities to meet their own needs when appropriate, thereby reducing the operational demand on councils. CRGs play a pivotal role in engaging local

communities in emergency preparedness, response, and recovery efforts. Research indicates that community-led initiatives enhance disaster resilience by leveraging local knowledge, fostering resource-sharing, and promoting self-sufficiency, ultimately reducing reliance on external agencies (Imperiale & Vinclay, 2016; Mayer, 2019).

The primary purpose of these groups is to address the needs of their local communities while communicating and escalating issues that exceed their mandate in a manner consistent with the formal response process.

Responsibilities and Roles Between Community Boards and Community Resilience Groups in Dunedin

The Community Resilience Strategy does not outline the specific responsibilities of Community Boards to Community Resilience Groups, and vice versa, particularly in the context of Dunedin and the established relationships between the two.

Community Resilience Workshop (5 March 2025)

The Community Resilience Workshop, held on 5 March 2025, brought together members from all the Community Boards in Dunedin, along with representatives from Dunedin City Council (DCC) and Emergency Management Otago. The workshop discussed the historical role of Community Boards in civil defence activities and focused on defining clear relationships, roles, and responsibilities between the parties. The following agreements were made:

Community Boards' Responsibilities:

1. **Representation in Community Resilience Groups (CRGs):** If a community in their area establishes a CRG, the board is required to ensure at least one of its members participates in the CRG.
2. **CRG Reporting:** Community Boards will receive a report from the CRG at each meeting.
3. **Funding Decisions:** Community Boards will review funding requests from CRGs and provide recommendations to the DCC.
4. **Communication during a Response:** During an emergency response, Community Boards will facilitate communication between the CRG and the Emergency Operations Centre (EOC).
5. **Civil Defence Agenda Item:** Community Boards shall include 'Civil Defence' as a standing item on their meeting agendas.

Community Resilience Groups' Responsibilities:

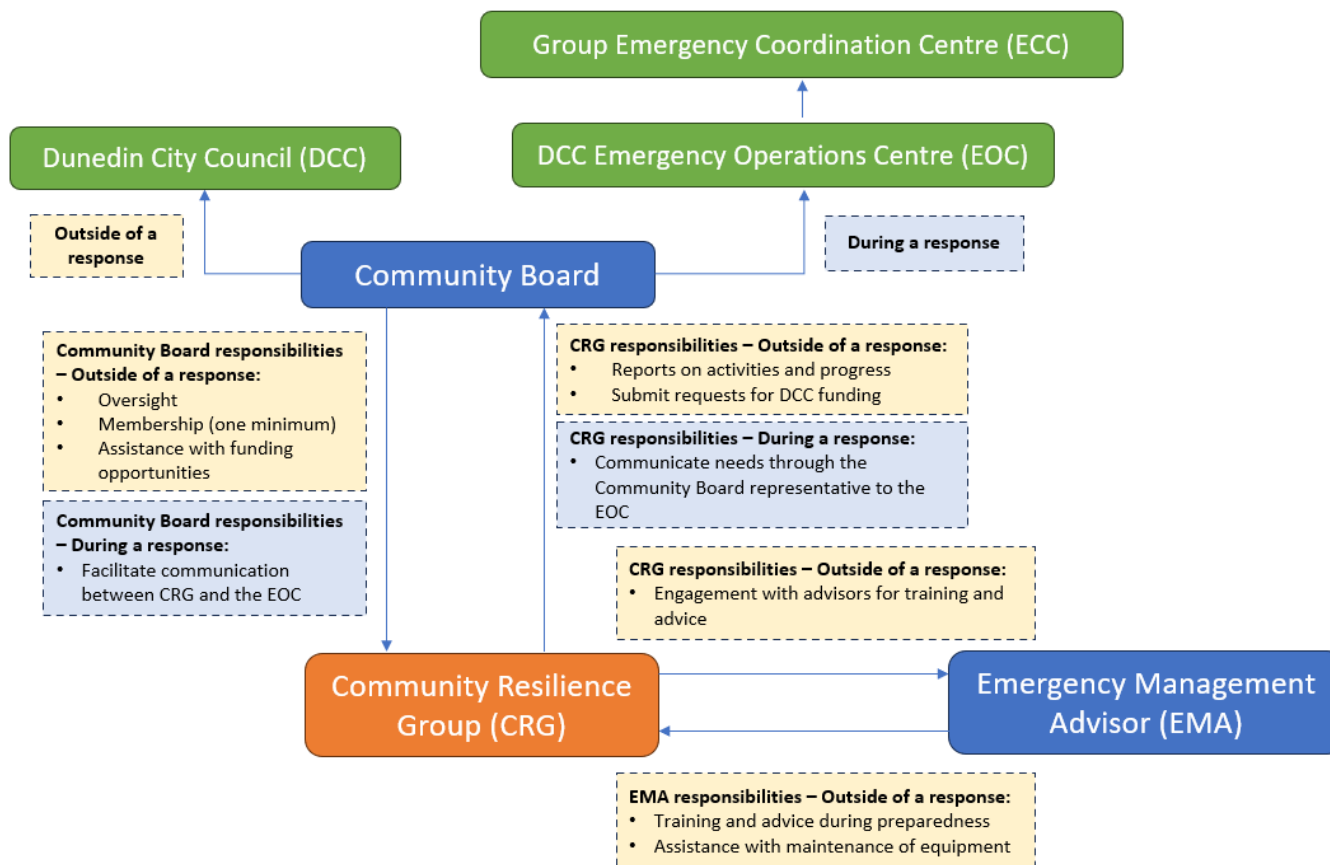
1. **Community Board Representation:** Each CRG must include at least one member from the relevant Community Board.
2. **Engagement with Emergency Management Advisors:** Outside of a response, CRGs will seek advice and training from Emergency Management Advisors in line with the Community Resilience Strategy.
3. **Reporting to the Community Board:** CRGs will provide regular updates on their activities and progress to the relevant Community Board, including a report at each Community Board meeting at a minimum.
4. **Communication during a Response:** During a response, CRGs will communicate with their designated Community Board representative. The Community Board will establish a single point of contact to the EOC via the Community Assessment team.

- a. If the designated representative is unavailable, the representative will delegate this task to another board member.

Emergency Management Otago's Role:

1. **Support and Training:** Emergency Management Otago will provide support, guidance, and training to Community Resilience Groups in accordance with the Community Resilience Strategy.
2. **Equipment Maintenance:** During preparedness the Emergency Management Advisors will support in the maintenance of equipment held by the CRG.

Figure 2: Relationship Structure Between Community Boards and Community Resilience Groups in Dunedin.



Reference List

Civil Defence Emergency Management Act 2002. (2002). *New Zealand Legislation*.
<https://www.legislation.govt.nz>

Eagle Technology., Stats NZ – Tatauranga Aotearoa., & University of Otago. (2024). NZ key census 2023 insights and deprivation index 2023 (SA1).
<https://www.arcgis.com/home/item.html?id=79a8dc8956144807be9ba4ac2f0b413f>
Reproduced by Andrew Dunn here:
<https://dunedin.maps.arcgis.com/apps/dashboards/8340309670b4451493c98c1efdd7cc80>

Emergency Management Otago. (2023). *Community Resilience Strategy*.
<https://www.otagodem.govt.nz/media/olvpplc1/emo-community-resilience-strategy.pdf>

Imperiale, A.J., & Vanclay, F. (2016). Experiencing local community resilience in action: Learning from post-disaster communities. *Journal of Rural Studies*, 47, 204-219.
<https://doi.org/10.1016/j.jrurstud.2016.08.002>

Mayer, B. (2019). A review of the literature on community resilience and disaster recovery. *Current Environmental Health Report*, 6, 167-173. <https://doi.org/10.1007/s40572-019-00239-3>

Ministry of Civil Defence & Emergency Management. (2019). *National disaster resilience strategy: Rautaki ā-motu manawaroa aituā*. Department of the Prime Minister and Cabinet. Retrieved from <https://www.civildefence.govt.nz/assets/Uploads/publications/National-Disaster-Resilience-Strategy/National-Disaster-Resilience-Strategy-10-April-2019.pdf>

COUNCILLOR UPDATE

Department: Civic

EXECUTIVE SUMMARY

- 1 Cr Andrew Whiley will provide an update on matters of interest to the Board.

RECOMMENDATIONS

That the Board:

- a) **Notes** the report from Cr Andrew Whiley.

Attachments

There are no attachments for this report.

CHAIRPERSON'S REPORT

Department: Civic

EXECUTIVE SUMMARY

The Chairperson will provide a verbal update on matters of interest including:

- Feedback from the DCC 9 year plan 2025-2034 and ORC Regional Public Transport Plan hearings
- Otago Harbour Reserves Management Plan
- Capital upgrade of the water supply to Macandrew Bay
- Changes in Dog Control Bylaw
- Portobello Cemetery (work undertaken by Parks and Recreation Dept on the boundary)
- Portobello Domain (possible community planting project)
- Dog poo bags (for distribution to the community)
- Queens High School Rezoning

RECOMMENDATIONS

That the Board:

- a) **Notes** the Chairperson's report.

Attachments

There are no attachments for this report.

ITEMS FOR CONSIDERATION BY THE CHAIR

Any items for consideration by the Chair?