

Notice of Meeting:

I hereby give notice that an ordinary meeting of the Policy and Planning Committee will be held on:

Date: Thursday 2 April 2026
Time: 9.00 am
Venue: Council Chamber, Level 2, Dunedin Public Art Gallery, The Octagon, Dunedin

Sandy Graham
Chief Executive Officer

Policy and Planning Committee
PUBLIC AGENDA

MEMBERSHIP

Chairperson	Mayor Sophie Barker	
Deputy Chairperson	Deputy Mayor Cherry Lucas	
Members	Cr John Chambers	Cr Christine Garey
	Cr Doug Hall	Cr Marie Laufiso
	Cr Russell Lund	Cr Mandy Mayhem
	Cr Benedict Ong	Cr Andrew Simms
	Cr Mickey Treadwell	Cr Lee Vandervis
	Cr Steve Walker	Cr Brent Weatherall
	Nadia Wesley-Smith	Emma Wyeth

Senior Officer David Ward, General Manager 3 Waters, Property and Urban Development

Governance Support Officer Rebecca Murray

Rebecca Murray
Governance Support Officer

Telephone: 03 477 4000
governance.support@dcc.govt.nz
www.dunedin.govt.nz

Note: Reports and recommendations contained in this agenda are not to be considered as Council policy until adopted.

ITEM	TABLE OF CONTENTS	PAGE
1	Karakia Timatanga	4
2	Public Forum	4
	2.1 Homelessness	4
3	Apologies	4
4	Confirmation of Agenda	4
5	Declaration of Interest	5
6	Confirmation of Minutes	13
	6.1 Policy and Planning Committee meeting - 5 February 2026	14
PART A REPORTS (Committee has power to decide these matters)		
7	DCC Emissions Management and Reduction Plan & Zero Carbon implementation plan 2025/26 - Q1/2 reporting	19
8	Dunedin City Greenhouse Gas Emissions Inventory for the 2025 Financial Year	38
9	Items for Consideration by the Chair	82
10	Karakia Whakamutunga	83

1 KARAKIA TIMATANGA

The meeting will open with a Karakia Timatanga.

2 PUBLIC FORUM

AT THE CLOSE OF THE AGENDA PUBLIC FORUM REGISTRATIONS WERE STILL BEING TAKEN.
THE SPEAKERS WILL BE CONFIRMED FOLLOWING THE CLOSURE OF REGISTRATIONS 24 HOURS
BEFORE THE MEETING BEGINS I.E. 9.00 AM ON WEDNESDAY, 1 APRIL 2026.

3 APOLOGIES

At the close of the agenda no apologies had been received.

4 CONFIRMATION OF AGENDA

Note: Any additions must be approved by resolution with an explanation as to why they cannot be delayed until a future meeting.

DECLARATION OF INTEREST

EXECUTIVE SUMMARY

1. Members are reminded of the need to stand aside from decision-making when a conflict arises between their role as an elected or independent representative and any private or other external interest they might have.
2. Elected or independent members are reminded to update their register of interests as soon as practicable, including amending the register at this meeting if necessary.

RECOMMENDATIONS

That the Committee:

- a) **Notes/Amends** if necessary the Elected or Independent Members' Interest Register attached as Attachment A; and
- b) **Confirms/Amends** the proposed management plan for Elected or Independent Members' Interests.

Attachments

	Title	Page
↓A	Policy and Planning Committee Register of Interest	6

Policy and Planning Committee Interest Register 3 March 2026				
Name	Responsibility (i.e. Chairperson etc)	Declaration of Interests	Nature of Potential Interest	Member's Proposed Management Plan
Mayor Sophie Barker	Shareholder	Ayrmed Limited	No conflict identified	Seek advice prior to the meeting if actual or perceived conflict of interest arises.
	Shareholder	Various publicly listed companies	No conflict identified	Seek advice prior to the meeting if actual or perceived conflict of interest arises.
	Property Owner	Residential Property Owner - Dunedin	No conflict identified	Seek advice prior to the meeting if actual or perceived conflict of interest arises.
	Beneficiary	Sans Peur Trust (Larnach Castle)	No conflict identified	Seek advice prior to the meeting if actual or perceived conflict of interest arises.
	Mentor	Business Mentors NZ	No conflict identified	Seek advice prior to the meeting if actual or perceived conflict of interest arises.
	Member	Dunedin Vegetable Growers Club	No conflict identified	Seek advice prior to the meeting if actual or perceived conflict of interest arises.
	Trustee	Alexander McMillan Trust	No conflict identified	Seek advice prior to the meeting if actual or perceived conflict of interest arises.
	Patron	New Zealand International Science Festival	No conflict identified	Seek advice prior to the meeting if actual or perceived conflict of interest arises.
	Patron	Dunedin Horticultural Society	No conflict identified	Seek advice prior to the meeting if actual or perceived conflict of interest arises.
	Member	Institute of Directors	No conflict Identified	Seek advice prior to the meeting if actual or perceived conflict of interest arises.
	Chairperson	Dunedin Heritage Fund (Council Appointment)	No conflict Identified	Seek advice prior to the meeting if actual or perceived conflict of interest arises.
	Member	Grow Dunedin Partnership (Council Appointment)	No conflict Identified	Seek advice prior to the meeting if actual or perceived conflict of interest arises.
	Member	Heritage Advisory Group (Council Appointment)	No conflict Identified	Seek advice prior to the meeting if actual or perceived conflict of interest arises.
	Member	Local Government New Zealand (Zone 6) (Council Appointment)	No conflict Identified	Seek advice prior to the meeting if actual or perceived conflict of interest arises.
	Co-Chair	Ōtepoti Dunedin Destination Management Plan Advisory Panel (Council Appointment)	No conflict identified	Seek advice prior to the meeting if actual or perceived conflict of interest arises.
Family Member	Family Member employed at Wilkinson Rogers	No conflict identified	Seek advice prior to the meeting if actual or perceived conflict of interest arises.	
Member	Tertiary Precinct Planning Group (Council Appointment)	No conflict Identified	Seek advice prior to the meeting if actual or perceived conflict of interest arises.	
Cr John Chambers	Owner	Residential Property	No conflict identified	Seek advice prior to the meeting if actual or perceived conflict of interest arises.
	Owner	Rental Property	No conflict identified	Seek advice prior to the meeting if actual or perceived conflict of interest arises.
	Member	Otakau Golf Club	No conflict identified	Seek advice prior to the meeting if actual or perceived conflict of interest arises.
	Member	Opera Otago	No conflict identified	Seek advice prior to the meeting if actual or perceived conflict of interest arises.
	Member	Hereweka Harbour Cone Trust (Council Appointment)	No conflict identified	Seek advice prior to the meeting if actual or perceived conflict of interest arises.
	Member	Okia Reserve Management Committee (Council Appointment)	No conflict identified	Seek advice prior to the meeting if actual or perceived conflict of interest arises.

Name	Responsibility (i.e. Chairperson etc)	Declaration of Interests	Nature of Potential Interest	Member's Proposed Management Plan
Cr John Chambers (Cont)	Member	Waikouaiti Coast Community Board (Council Appointment)	No conflict identified	Seek advice prior to the meeting if actual or perceived conflict of interest arises.
Cr Christine Garey	Trustee	Garey Family Trust - Property Ownership - Dunedin	No conflict identified	Seek advice prior to the meeting if actual or perceived conflict of interest arises.
	Daughter employee	Halo Project	No conflict identified	Seek advice prior to the meeting if actual or perceived conflict of interest arises.
	Trustee	Ashburn Hall Charitable Trust Board	No conflict identified	Seek advice prior to the meeting if actual or perceived conflict of interest arises.
	Member	Creative Dunedin Partnership (Council Appointment)	No conflict identified	Seek advice prior to the meeting if actual or perceived conflict of interest arises.
	Member	Performing Arts Advisory Group (Council Appointment)	No conflict identified	Seek advice prior to the meeting if actual or perceived conflict of interest arises.
		Sophia Charter (Council Appointment)	No conflict identified	Seek advice prior to the meeting if actual or perceived conflict of interest arises.
	Member	St Paul's Cathedral Foundation (Council Appointment)	No conflict identified	Seek advice prior to the meeting if actual or perceived conflict of interest arises.
Cr Doug Hall	Member	Theomin Gallery Management Committee (Olveston) (Council Appointment)	No conflict identified	Seek advice prior to the meeting if actual or perceived conflict of interest arises.
	Trustee	Cronus Trust	No conflict identified	Seek advice prior to the meeting if actual or perceived conflict of interest arises.
	Owner	Clickfix Ltd	No conflict identified	Seek advice prior to the meeting if actual or perceived conflict of interest arises.
	Member	District Licensing Committee (Council Appointment)	No conflict identified	Seek advice prior to the meeting if actual or perceived conflict of interest arises.
	Member	Dunedin Public Art Gallery Society (Council Appointment)	No conflict identified	Seek advice prior to the meeting if actual or perceived conflict of interest arises.
	Member	Toitū Otago Settlers Museum Board (Council Appointment)	No conflict identified	Seek advice prior to the meeting if actual or perceived conflict of interest arises.
Cr Marie Laufiso	Member	West Harbour Community Board (Council Appointment)	No conflict identified	Seek advice prior to the meeting if actual or perceived conflict of interest arises.
	Property Owner	Residential Property	No conflict identified	Seek advice prior to the meeting if actual or perceived conflict of interest arises.
	Trustee	Moray Place Community Building Trust - which owns property 111 Moray Place	Duty to Trust may conflict with duties of Council Office	Seek advice prior to the meeting if actual or perceived conflict of interest arises.
	Member	Women of Ōtepoti Recognition Initiative	No conflict identified	Seek advice prior to the meeting if actual or perceived conflict of interest arises.
	Trustee	Corso Ōtepoti Dunedin Trust	Potential grants recipient	Withdraw from discussion and leave the table. If in public excluded leave the room. Seek advice prior to the meeting.
	Dunedin Branch Treasurer	P.A.C.I.F.I.C.A Inc	Potential grants recipient	Withdraw from discussion and leave the table. If in public excluded leave the room. Seek advice prior to the meeting.
	Expert Panel Member	Health Coalition Aotearoa Public Health Infrastructure Committee	No conflict identified	Seek advice prior to the meeting if actual or perceived conflict of interest arises.
	Trustee	The Ōtepoti Community Builders Charitable Trust	No conflict identified	Seek advice prior to the meeting if actual or perceived conflict of interest arises.
	Trustee/Secretary	Refugee Support Group	No conflict identified	Seek advice prior to the meeting if actual or perceived conflict of interest arises.
	Member	Dunedin Abrahamic Interfaith Group (Council Appointment)	No conflict identified	Seek advice prior to the meeting if actual or perceived conflict of interest arises.
Member	Dunedin Former Refugee Steering Committee (Council Appointment)	No conflict identified	Seek advice prior to the meeting if actual or perceived conflict of interest arises.	

Name	Responsibility (i.e. Chairperson etc)	Declaration of Interests	Nature of Potential Interest	Member's Proposed Management Plan
Cr Marie Laufiso (Cont)	Member	Puketai Residential Centre Liaison Committee (Council Appointment)	No conflict identified	Seek advice prior to the meeting if actual or perceived conflict of interest arises.
	Member	Social Wellbeing Advisory Group (Council Appointment)	No conflict identified	Seek advice prior to the meeting if actual or perceived conflict of interest arises.
Cr Cherry Lucas	Trustee	Otago Farmers Market	No conflict identified	Seek advice prior to the meeting if actual or perceived conflict of interest arises.
	Partner	Southway Enterprises	No conflict identified	Seek advice prior to the meeting if actual or perceived conflict of interest arises.
	Trustee	Henderson Lucas Family Trust - Residential Dunedin Property	No conflict identified	Seek advice prior to the meeting if actual or perceived conflict of interest arises.
	Member	NZ Institute of Chartered Accountants	No conflict identified	Seek advice prior to the meeting if actual or perceived conflict of interest arises.
	Member	Dunedin Shanghai Association (Council Appointment)	No conflict identified	Seek advice prior to the meeting if actual or perceived conflict of interest arises.
	Member	Local Government New Zealand (Zone 6) (Council Appointment)	No conflict identified	Seek advice prior to the meeting if actual or perceived conflict of interest arises.
	Member	Tūhura Otago Museum Trust Board (Council Appointment)	No conflict identified	Seek advice prior to the meeting if actual or perceived conflict of interest arises.
	Member	Ōtepoti Dunedin Destination Management Plan Advisory Panel (Council Appointment)	No conflict identified	Seek advice prior to the meeting if actual or perceived conflict of interest arises.
	Member	Taieri Airport Trust (Council Appointment)	No conflict identified	Seek advice prior to the meeting if actual or perceived conflict of interest arises.
	Member	Tertiary Precinct Planning Group (Council Appointment)	No conflict identified	Seek advice prior to the meeting if actual or perceived conflict of interest arises.
	Member	Te Poāri a Pukekura (Council Appointment)	No conflict identified	Seek advice prior to the meeting if actual or perceived conflict of interest arises.
Cr Russell Lund	Shareholder	Loan & Mercantile Trust includes:	No conflict identified	Seek advice prior to the meeting if actual or perceived conflict of interest arises.
	Director	Produce Place Ltd	No conflict identified	Seek advice prior to the meeting if actual or perceived conflict of interest arises.
	Director	Dunedin Grain Store Ltd	No conflict identified	Seek advice prior to the meeting if actual or perceived conflict of interest arises.
	Director/Shareholder	Loan & Mercantile 2000 Ltd	No conflict identified	Seek advice prior to the meeting if actual or perceived conflict of interest arises.
	Shareholder	Lund South Trust includes:	No conflict identified	Seek advice prior to the meeting if actual or perceived conflict of interest arises.
	Director/Shareholder	Lund South Ltd	No conflict identified	Seek advice prior to the meeting if actual or perceived conflict of interest arises.
	Director/Shareholder	Lund Dunedin Ltd	No conflict identified	Seek advice prior to the meeting if actual or perceived conflict of interest arises.
	Director/Shareholder	Resource Values Ltd	No conflict identified	Seek advice prior to the meeting if actual or perceived conflict of interest arises.
	Director	Sherwood Manor Properties Ltd	No conflict identified	Seek advice prior to the meeting if actual or perceived conflict of interest arises.
	Director/Shareholder	Lund Central Ltd	No conflict identified	Seek advice prior to the meeting if actual or perceived conflict of interest arises.
	Director/Shareholder	Lund South Administration Ltd	No conflict identified	Seek advice prior to the meeting if actual or perceived conflict of interest arises.

Name	Responsibility (i.e. Chairperson etc)	Declaration of Interests	Nature of Potential Interest	Member's Proposed Management Plan
Cr Russell Lund (Cont)	Director	Construction Operatives Ltd	No conflict identified	Seek advice prior to the meeting if actual or perceived conflict of interest arises.
	Director	Lund South Properties Ltd	No conflict identified	Seek advice prior to the meeting if actual or perceived conflict of interest arises.
	Trustee	RV Lund Trust	No conflict identified	Seek advice prior to the meeting if actual or perceived conflict of interest arises.
	Trustee	BDCRS Trust	No conflict identified	Seek advice prior to the meeting if actual or perceived conflict of interest arises.
	Director	Lund Frankton Ltd	No conflict identified	Seek advice prior to the meeting if actual or perceived conflict of interest arises.
	President	Ariki Amateur Athletic & Harrier Club	Ariki is a member of Athletics Otago which receives grant funding from DCC.	Withdraw from discussion and leave the table. If in public excluded leave the room. Seek advice prior to the meeting.
	Member	Heritage Advisory Group (Council Appointment)	No conflict identified	Seek advice prior to the meeting if actual or perceived conflict of interest arises.
	Member	Otago Theatre Trust (Council Appointment)	No conflict identified	Seek advice prior to the meeting if actual or perceived conflict of interest arises.
Cr Mandy Mayhem	Chairperson	Waitati Hall Society Inc	No conflict identified	Seek advice prior to the meeting if actual or perceived conflict of interest arises.
	Chairperson	Keep Ōtepoti Dunedin Beautiful	No conflict identified	Seek advice prior to the meeting if actual or perceived conflict of interest arises.
	Co-ordinator	Emergency Response Group, Blueskin area	No conflict identified	Seek advice prior to the meeting if actual or perceived conflict of interest arises.
	Member	FENZ Local Advisory Committee for Otago	No conflict identified	Seek advice prior to the meeting if actual or perceived conflict of interest arises.
	Member	Blueskin Bay Amenities Society	No conflict identified	Seek advice prior to the meeting if actual or perceived conflict of interest arises.
	Member	Blueskin A & P Society	No conflict identified	Seek advice prior to the meeting if actual or perceived conflict of interest arises.
	Zone Representative and Board Member	Keep New Zealand Beautiful	No conflict identified	Seek advice prior to the meeting if actual or perceived conflict of interest arises.
	Member	Coastal Community Cycleway Network	No conflict identified	Seek advice prior to the meeting if actual or perceived conflict of interest arises.
	Member	Waitati Music Festival Committee	No conflict identified	Seek advice prior to the meeting if actual or perceived conflict of interest arises.
	Property Owner	Residential Property	No conflict identified	Seek advice prior to the meeting if actual or perceived conflict of interest arises.
	Member	Disability Issues Advisory Group (Council Appointment)	No conflict identified	Seek advice prior to the meeting if actual or perceived conflict of interest arises.
	Member	Dunedin Gasworks Museum Trust (Council Appointment)	No conflict identified	Seek advice prior to the meeting if actual or perceived conflict of interest arises.
	Member	Keep Dunedin Beautiful (Council Appointment)	No conflict identified	Seek advice prior to the meeting if actual or perceived conflict of interest arises.
	Member	Performing Arts Advisory Group (Council Appointment)	No conflict identified	Seek advice prior to the meeting if actual or perceived conflict of interest arises.
Member	Social Wellbeing Advisory Group (Council Appointment)	No conflict identified	Seek advice prior to the meeting if actual or perceived conflict of interest arises.	
Cr Benedict Ong	Owner	Residential Property	No conflict identified	Seek advice prior to the meeting if actual or perceived conflict of interest arises.
	Shareholder	Listed Stocks	No conflict identified	Seek advice prior to the meeting if actual or perceived conflict of interest arises.

Name	Responsibility (i.e. Chairperson etc)	Declaration of Interests	Nature of Potential Interest	Member's Proposed Management Plan
Cr Benedict Ong (Cont)	Member	Otago Settlers Association (Council Appointment)	No conflict identified	Seek advice prior to the meeting if actual or perceived conflict of interest arises.
	Member	Toitū Otago Settlers Museum Board (Council Appointment)	No conflict identified	Seek advice prior to the meeting if actual or perceived conflict of interest arises.
Cr Andrew Simms	Director	Landseer Motor Investments Limited	No conflict identified	Seek advice prior to the meeting if actual or perceived conflict of interest arises.
	Director	Landseer Motor Investments Auckland Limited t/a Andrew Simms - Motor vehicle retail	No conflict identified	Seek advice prior to the meeting if actual or perceived conflict of interest arises.
	Director	Stephen Duff Motors Limited t/a Andrew Simms Dunedin - Motor vehicle retail	No conflict identified	Seek advice prior to the meeting if actual or perceived conflict of interest arises.
	Director	Three Diamond Automotive t/a Ralliart NZ - Race car preparation	No conflict identified	Seek advice prior to the meeting if actual or perceived conflict of interest arises.
	Director	Cambridge Finance Limited - Financial Services	No conflict identified	Seek advice prior to the meeting if actual or perceived conflict of interest arises.
	Director	The Landseer Group Limited - Investments	No conflict identified	Seek advice prior to the meeting if actual or perceived conflict of interest arises.
	Director	Otago Motorhome Centre Limited - Motor vehicle retail	No conflict identified	Seek advice prior to the meeting if actual or perceived conflict of interest arises.
	Director	Landseer Motor Investments Henderson Limited - Motor vehicle retail	No conflict identified	Seek advice prior to the meeting if actual or perceived conflict of interest arises.
	Director	Landseer Motor Investments Moorhouse Limited - Motor vehicle retail	No conflict identified	Seek advice prior to the meeting if actual or perceived conflict of interest arises.
	Director	Minaret Property Investments Limited - Property Investment	No conflict identified	Seek advice prior to the meeting if actual or perceived conflict of interest arises.
	Trustee	The Newfoundland Trust	No conflict identified	Seek advice prior to the meeting if actual or perceived conflict of interest arises.
	Trustee	The Moturata Trust	No conflict identified	Seek advice prior to the meeting if actual or perceived conflict of interest arises.
	Member	Taieri Trails Group	No conflict identified	Seek advice prior to the meeting if actual or perceived conflict of interest arises.
	Member	Taieri Cricket Club	No conflict identified	Seek advice prior to the meeting if actual or perceived conflict of interest arises.
	Member	Mosgiel AFC	No conflict identified	Seek advice prior to the meeting if actual or perceived conflict of interest arises.
	Owner	Residential Property	No conflict identified	Seek advice prior to the meeting if actual or perceived conflict of interest arises.
	Owner	Commercial Property, Andersons Bay Road, Dunedin	No conflict identified	Seek advice prior to the meeting if actual or perceived conflict of interest arises.
Member	Dunedin Heritage Fund (Council Appointment)	No conflict identified	Seek advice prior to the meeting if actual or perceived conflict of interest arises.	
Member	Heritage Advisory Group (Council Appointment)	No conflict identified	Seek advice prior to the meeting if actual or perceived conflict of interest arises.	
Member	Tūhura Otago Museum Trust Board (Council Appointment)	No conflict identified	Seek advice prior to the meeting if actual or perceived conflict of interest arises.	
Member	Taieri Airport Trust (Council Appointment)	No conflict identified	Seek advice prior to the meeting if actual or perceived conflict of interest arises.	
Cr Micky Treadwell	Director	Atawhai Interactive Tapui Ltd	No conflict identified	Seek advice prior to the meeting if actual or perceived conflict of interest arises.
	Contractor	Otago Polytechnic	No conflict identified	Seek advice prior to the meeting if actual or perceived conflict of interest arises.
	Co-owner	Residential Property	No conflict identified	Seek advice prior to the meeting if actual or perceived conflict of interest arises.
	Member	Green Party of Aotearoa	No conflict identified	Seek advice prior to the meeting if actual or perceived conflict of interest arises.

Name	Responsibility (i.e. Chairperson etc)	Declaration of Interests	Nature of Potential Interest	Member's Proposed Management Plan
Cr Mickey Treadwell (Cont)	Member	Dunedin Otaru Sister City Society (Council Appointment)	No conflict identified	Seek advice prior to the meeting if actual or perceived conflict of interest arises.
	Member	Ice Sports Dunedin Incorporated (Council Appointment)	No conflict identified	Seek advice prior to the meeting if actual or perceived conflict of interest arises.
	Member	Ōtepoti Dunedin Live Music Advisory Panel (Council Appointment)	No conflict identified	Seek advice prior to the meeting if actual or perceived conflict of interest arises.
	Member	Te Ao Tūroa Partnership (Council Appointment)	No conflict identified	Seek advice prior to the meeting if actual or perceived conflict of interest arises.
	Member	Otago Peninsula Community Board (Council Appointment)	No conflict identified	Seek advice prior to the meeting if actual or perceived conflict of interest arises.
Cr Lee Vandervis	Director	Lee Vandervis, Antonie Alm-Lequeux and Cook Allan Gibson Trustee Company Ltd - Residential Property Ownership - Dunedin	No conflict identified	Seek advice prior to the meeting if actual or perceived conflict of interest arises.
	Director	Bunchy Properties Ltd - Residential and Lifestyle Farm Property Ownership - Dunedin	No conflict identified	Seek advice prior to the meeting if actual or perceived conflict of interest arises.
	Owner	Various publicly Audio and Lighting - Hire, Sales and Service Business	May contract and provide service to DCC	Withdraw from discussion and leave the table. If the meeting is in public excluded leave the room. Seek advice prior to the meeting.
	Member	District Licensing Committee (Council Appointment)	No conflict identified	Seek advice prior to the meeting if actual or perceived conflict of interest arises.
	Member	Dunedin Heritage Fund (Council Appointment)	No conflict identified	Seek advice prior to the meeting if actual or perceived conflict of interest arises.
Cr Steve Walker	Member	Okia Reserve Management Committee (Council Appointment)	No conflict identified	Seek advice prior to the meeting if actual or perceived conflict of interest arises.
	Trustee	Dunedin Wildlife Hospital Trust	Potential grants recipient	Withdraw from discussion and leave the table. If the meeting is in public excluded leave the room. Seek advice prior to the meeting.
	Member	Orokonui Ecosanctuary	Potential grants recipient	Withdraw from discussion and leave the table. If the meeting is in public excluded leave the room. Seek advice prior to the meeting.
	Member	New Zealand Labour Party	No conflict identified	Seek advice prior to the meeting if actual or perceived conflict of interest arises.
	Owner	Residential Property - Dunedin	No conflict identified	Seek advice prior to the meeting if actual or perceived conflict of interest arises.
	Shareholder	Various publicly listed companies	No conflict identified	Seek advice prior to the meeting if actual or perceived conflict of interest arises.
	Member	NZ Sea Lion Trust	No conflict identified	Seek advice prior to the meeting if actual or perceived conflict of interest arises.
	Justice of the Peace		No conflict identified	Seek advice prior to the meeting if actual or perceived conflict of interest arises.
	Trustee	Predator Free Dunedin	No conflict identified	Seek advice prior to the meeting if actual or perceived conflict of interest arises.
	Member	Dunedin Edinburgh Sister City Society (Council Appointment)	No conflict identified	Seek advice prior to the meeting if actual or perceived conflict of interest arises.
	Member	Dunedin Heritage Fund (Council Appointment)	No conflict identified	Seek advice prior to the meeting if actual or perceived conflict of interest arises.
	Member	Dunedin Art Gallery Acquisitions Committee (Council Appointment)	No conflict identified	Seek advice prior to the meeting if actual or perceived conflict of interest arises.
	Member	Hereweka Harbour Cone Trust (Council Appointment)	No conflict identified	Seek advice prior to the meeting if actual or perceived conflict of interest arises.
Member	NZ Masters Games Trust Board (Council Appointment)	No conflict identified	Seek advice prior to the meeting if actual or perceived conflict of interest arises.	
Member	Otago Regional Transport Committee (Council Appointment)	No conflict identified	Seek advice prior to the meeting if actual or perceived conflict of interest arises.	

Name	Responsibility (i.e. Chairperson etc)	Declaration of Interests	Nature of Potential Interest	Member's Proposed Management Plan
Cr Steve Walker (Cont)	Member	Ōtepoti Dunedin Live Music Advisory Panel	No conflict identified	Seek advice prior to the meeting if actual or perceived conflict of interest arises.
	Member	Predator Free Dunedin (Council Appointment)	No conflict identified	Seek advice prior to the meeting if actual or perceived conflict of interest arises.
Cr Brent Weatherall	Owner	Residential Property	No conflict identified	Seek advice prior to the meeting if actual or perceived conflict of interest arises.
	Owner	Business George Street, Dunedin	No conflict identified	Seek advice prior to the meeting if actual or perceived conflict of interest arises.
	Trustee	Brent Weatherall Jeweller Limited	No conflict identified	Seek advice prior to the meeting if actual or perceived conflict of interest arises.
	Trustee	Weatherall Trustee Company	No conflict identified	Seek advice prior to the meeting if actual or perceived conflict of interest arises.
	Trustee	Residential Rental Properties	No conflict identified	Seek advice prior to the meeting if actual or perceived conflict of interest arises.
	Member	Dunedin Club	No conflict identified	Seek advice prior to the meeting if actual or perceived conflict of interest arises.
	Member	Dunedin Public Art Society (Council Appointment)	No conflict identified	Seek advice prior to the meeting if actual or perceived conflict of interest arises.
	Member	Keep Dunedin Beautiful (Council Appointment)	No conflict identified	Seek advice prior to the meeting if actual or perceived conflict of interest arises.
Nadia Wesley-Smith		To be advised		
		To be advised		
Emma Wyeth		To be advised		

CONFIRMATION OF MINUTES

POLICY AND PLANNING COMMITTEE MEETING - 5 FEBRUARY 2026

RECOMMENDATIONS

That the Committee:

- a) **Confirms** the public part of the minutes of the Policy and Planning Committee meeting held on 05 February 2026 as a correct record.

Attachments

	Title	Page
A↓	Minutes of Policy and Planning Committee meeting held on 5 February 2026	14

Policy and Planning Committee

MINUTES

Minutes of an ordinary meeting of the Policy and Planning Committee held in the Council Chamber, Level 2, Dunedin Public Art Gallery, The Octagon, Dunedin on Thursday 05 February 2026, commencing at 9.00 am

PRESENT

Chairperson	Mayor Sophie Barker	
Deputy Chairperson	Deputy Mayor Cherry Lucas	
Members	Cr John Chambers	Cr Doug Hall
	Cr Marie Laufiso	Cr Russell Lund
	Cr Mandy Mayhem	Cr Benedict Ong
	Cr Andrew Simms	Cr Mickey Treadwell
	Cr Lee Vandervis	Cr Steve Walker
	Cr Brent Weatherall	

IN ATTENDANCE

David Ward (General Manager 3 Waters, Property and Urban Development), Mike Costelloe (General Manager Arts, Culture & Economic Development), Carolyn Allan (Chief Financial Officer), Dr Anna Johnson (Manager City Development), Tony Nelmes (Project Accountant, Financial Services), Bede Morrissey (Senior Planner City Development), Brandy Saxton (Senior Advisor Climate Adaptation and Resilience) and Jackie Harrison (Manager Governance)

Governance Support Officer Jean Cockram

1 KARAKIA TIMATANGA

The Mayor opened the meeting with a karakia timatanga.

2 PUBLIC FORUM

There was no Public Forum.

3 APOLOGIES

Apologies were received from Cr Christine Garey for absence, and from Crs Mandy Mayhem and Steve Walker for early departure.

Moved (Mayor Sophie Barker/Cr Cherry Lucas):

That the Committee:

Accepts the apologies from Cr Christine Garey for absence and from Crs Mandy Mayhem and Steve Walker for early departure.

Motion carried (PAPCC/2026/001)

4 CONFIRMATION OF AGENDA

Moved (Mayor Sophie Barker/Cr Cherry Lucas):

That the Committee:

Confirms the agenda without addition or alteration.

Motion carried (PAPCC/2026/002)

5 DECLARATIONS OF INTEREST

Members were reminded of the need to stand aside from decision-making when a conflict arose between their role as an elected representative and any private or other external interest they might have.

Moved (Mayor Sophie Barker/Cr Cherry Lucas):

That the Committee:

- a) **Notes** the Elected Members' Interest Register; and
- b) **Confirms** the proposed management plan for Elected Members' Interests.

Motion carried (PAPCC/2026/003)

Cr Mickey Treadwell entered the meeting at 9.02am.

Cr Benedict Ong entered the meeting at 9.04am.

PART A REPORTS

6 DUNEDIN CITY COUNCIL SUBMISSION ON THE INFRASTRUCTURE FUNDING AND FINANCE ACT AMENDMENT BILL

A report from City Development, Finance and Corporate Policy sought approval of a draft Dunedin City Council (DCC) submission to the Finance and Expenditure Committee on the Infrastructure Funding and Financing Amendments Bill.

The General Manager, 3 Waters, Property and Urban Development (Dave Ward), Manager, City Development (Dr Anna Johnson), Project Accountant, Financial Services (Tony Nelmes) and Senior Planner, City Development (Bede Morrisey) responded to questions.

Cr Mandy Mayhem left the meeting at 10.02am.

Moved (Cr Mickey Treadwell/Cr Marie Laufiso):

That the Committee:

- a) **Approves** the draft Dunedin City Council Submission, with any amendments, on the Infrastructure Funding and Finance Act Amendment Bill.
- b) **Authorises** the Chief Executive to make any minor editorial amendments to the submission.
- c) **Notes** that the Mayor or delegate will speak to the submission at any hearings.

Motion carried (PAPCC/2026/004) with Cr Lee Vandervis and Cr Russell Lund recording their vote against.

7 DUNEDIN CITY COUNCIL SUBMISSION ON THE LOCAL GOVERNMENT (INFRASTRUCTURE FUNDING) AMENDMENT BILL

A report from City Development, Finance and Corporate Policy sought approval of a draft Dunedin City Council (DCC) submission on the partial exposure draft of the Local Government (Infrastructure Funding) Amendment Bill, and the associated Supporting Growth Through a Development Levies System consultation document.

The General Manager, 3 Waters, Property and Urban Development (Dave Ward), Manager, City Development (Dr Anna Johnson), Project Accountant, Financial Services (Tony Nelmes) and Senior Planner, City Development (Bede Morrisey) responded to questions.

Cr Benedict Ong left the meeting at 10.14am and returned at 10.34am.

Moved (Mayor Sophie Barker/Cr Steve Walker):

That the Committee:

Adjourns the meeting for 10 minutes.

Motion carried

The meeting adjourned at 10.52am and reconvened at 11.03am.

Cr Steve Walker left the meeting at 10.56am.

Moved (Mayor Sophie Barker/Cr Lee Vandervis):

That the Committee:

- a) **Approves** the draft Dunedin City Council Submission on the partial exposure draft of the Local Government (Infrastructure Funding) Amendment Bill with an additional point, consistent with the Taituarā submission, regarding in-house water services and their ability to recover levies.
- b) **Authorises** the Chief Executive to make any minor editorial amendments to the submission.

Motion carried (PAPCC/2026/005)

8 DUNEDIN CITY COUNCIL SUBMISSION ON THE EMERGENCY MANAGEMENT BILL (NO 2)

A report from Corporate Policy sought approval of a draft Dunedin City Council (DCC) submission to the Governance and Administration Committee on the Emergency Management Bill (No. 2) (the Bill).

The General Manager, Arts, Culture & Economic Development (Mike Costelloe) and the Senior Advisor – Climate Adaptation and Resilience (Brandy Saxton) spoke to the report and responded to questions.

Moved (Mayor Sophie Barker/Cr Cherry Lucas):

That the Committee:

- a) **Approves** the Dunedin City Council submission, with any amendments, to the Governance and Administration Committee on the Emergency Management Bill (No. 2).
- b) **Authorises** the Chief Executive to make any minor editorial amendments to the submission.
- c) **Authorises** the Mayor or delegate to speak at any hearings.

Motion carried (PAPCC/2026/006)

9 ITEMS FOR CONSIDERATION BY THE CHAIR

Mayor Sophie Barker:

With respect to Item 7 Dunedin City Council submission on the Local Government (Infrastructure Funding) Amendment Bill

Staff were requested to compare DCCs development contributions against other major cities and the percentage of Dunedin’s growth costs that are funded by these contributions.

10 KARAKIA WHAKAMUTUNGA

The Mayor closed the meeting with a karakia whakamutunga.

The meeting concluded at 11.33am.

.....

MAYOR

BACKGROUND

The DCC's Zero Carbon Policy directs that the organisation measure and aim to reduce emissions at two scales

- 7 In July 2022 Council adopted the Zero Carbon Policy (CNL/2022/049). The Policy formalises DCC's intention to pursue emissions reduction at two scales – organisational (DCC emissions), and Dunedin-wide (city emissions).

DCC emissions are monitored and reported using a standard organisational methodology

- 8 DCC's Zero Carbon Policy states that 'the DCC will monitor, measure, report, manage, verify and publicly report DCC emissions on a regular basis in line with the requirements of ISO 14064'. ISO 14064 is a widely used standard methodology for measuring and reporting emissions at the organisational scale.
- 9 The Zero Carbon Policy also states that the DCC will contribute to achieving emissions reduction targets including through implementing DCC emission reduction plans. It directs the DCC to prioritise gross emissions reductions.
- 10 The Zero Carbon work programme guiding principles adopted by Council in February 2022 (CNL/2022/004) are also of relevance to management of DCC emissions. They emphasise alignment with best practice.
- 11 To give effect to the Zero Carbon Policy, the DCC maintains an Emissions Management and Reduction Plan (EMRP) which sets out organisational targets and DCC's intended approach to reduce emissions (actions required to achieve targets). The DCC EMRP 2025/26-2029/30, reflecting the 9 year plan, was adopted by ELT and noted by Council in September 2025 (CNL/2025/277).
- 12 The scope of the DCC emissions managed and reported on are determined using the 'operational control' methodology. This includes activities undertaken by DCC staff (such as driving fleet cars, electricity usage) and emissions from DCC assets or services (such as LPG burnt at DCC pools, landfill gas from Green Island Landfill). It also includes emissions generated by significant suppliers undertaking work on behalf of the DCC, and emissions associated with some goods/consumables used during DCC activities (e.g. chemicals for water treatment).
- 13 The DCC's organisational emissions reduction targets (as set out in the EMRP) represent best practice, aligning with Science Based Targets Initiative (SBTi) guidance. The DCC's 'baseline year' (the year against which progress is measured) is 2018/19¹. Targets are relative to baseline and are as follows:
- a) a 2026/27 interim emissions target of a 34.2% reduction in annual tCO₂e emissions compared with baseline year; and
 - b) a 2029/30 target of a 46.2% reduction in emissions compared with baseline year, and

¹ For some emissions sources the reporting methodology has changed since 2018/19, or data is unavailable due to the emissions source being recently added to the inventory. Where this is the case, the earliest data available has been assumed to represent baseline.

- c) a commitment to achieving net zero no later than 2050, with confirmation of target date subject to decisions of Council on the city target, in early 2026.

The DCC has made progress on organisational emissions reduction, but sustained effort will be required to meet EMRP targets

- 14 Emissions modelling completed at time of EMRP adoption estimated that completion of all EMRP projects would deliver a 45% reduction in emissions to 2029/30. This falls slightly short of achieving the DCC's 2029/30 target, however staff are investigating additional measures that may help reduce this gap, whilst also reducing costs for the organisation.
- 15 Data for the 2024/25 financial year shows DCC achieved a 30.7% reduction in overall emissions compared to 2018/19. This reduction represented significant progress towards the 2026/27 interim emissions target, with the may shore up achievement of the 2029/30 target while also delivering cost savings for the organisation.

Adherence to the EMRP is a condition of participation in the Local Government Financing Agency's (LGFA) Climate Action Loans programme

- 16 The DCC's Zero Carbon Policy EMRP and annual Inventory Management Report are submitted to the Local Government Financing Agency's (LGFA) Climate Action Loans programme to enable borrowing at a discounted rate². Aligning the EMRP and targets with best practice, and remaining on track to achieve EMRP targets are prerequisites to maintaining access to the programme³.

DISCUSSION

Provisional DCC emissions data Q1/Q2 2025/26

- 17 Attachment A presents a summary of DCC's emissions (for sources with data available) over the first two quarters of 2025/26 financial year, broken down by emissions source. Attachment B presents a detailed breakdown of for specific emissions sources by location/group. Where possible, performance is compared with the same period in both the baseline year and the 2024/25 financial year.
- 18 The 6 month results are not directly comparable with, or able to be extrapolated to, an end of year position. The reporting is based on preliminary data and excludes several emissions sources that are monitored on an annual basis. Ministry for the Environment (MfE) emissions factors have been used – once 2026 factors are released, these will be applied and are likely to materially change results for some emissions sources (e.g., electricity consumption). The data

² Saving on interest on debt under the Climate Action Loans is 0.02% per annum; interest saved over FY 2025 was approximately \$63,000.

³ This is primarily a reputational rather than financial consideration. If DCC does not continue to meet programme criteria, any existing CALs would be declassified. The CAL margin discount will continue to apply for the duration of that CAL. However, declassification means: (a) LGFA will remove the Borrower's name from the list of CAL Borrowers on LGFA's website; (b) LGFA will name the Borrower on LGFA's website as a borrower which has had its CAL declassified as a result noncompliance with the CAL criteria; and (c) the Borrower will be ineligible to apply for new CALs until LGFA is satisfied (in its sole discretion) that the Borrower and the declassified CALs meet the CAL eligibility criteria.

presented is therefore a provisional snapshot of trends for the sources reported, rather than a complete and final picture of DCC emissions for the period.

Summary of emissions changes for sources included in report

- 19 Overall, the provisional data suggests DCC emissions from the sources included in this 6 month snapshot are:
- a) 34% lower than the same period in baseline year
 - b) 5% higher than the same period last year
- 20 Overall, relative to the same period last year, increased certified emissions associated with waste to Green Island landfill and electricity use were partially offset by reductions in emissions from wastewater treatment processes and LPG use. The identified drivers of these observed changes are set out below.
- 21 **Waste to Landfill** emissions over the period were 48% lower than baseline but 15% up compared with same period 2024/25. Landfill gas management improved slightly in 2025, with 49.8% of landfill gas collected and destroyed in 2025 compared with 49.1% in 2024. These gains were outweighed by the impact of a higher Unique Emissions Factor for Green Island landfill, and a slight increase in waste volumes.
- **Changes in the Unique Emissions Factor:** The MfE has recently updated the Landfill Unique Emissions Factor regulations. This technical accounting change affects calculation of certified Green Island landfill emissions, as the default emissions per tonne of waste (before landfill gas capture and destruction efficiency is considered) are 12% higher in 2025 compared with 2022-2024. The result is that certified Green Island landfill emissions for the 2025 calendar year were 0.513tCO₂e per tonne of waste, higher than the 0.463tCO₂e per tonne of waste applied to calculations in previous years. If the new default emissions per tonne of waste was applied to historic calculations, then waste emissions for Q1/2 would only be 2% higher than the same period in 2024 (due to increased waste tonnages).
 - **Changes in waste volumes:** An expanded kerbside collection service began on 1 July 2024, including offering weekly organics collection and a switch from rubbish bags to red wheelie bins for general waste. This change in kerbside service increased the number of households using DCC kerbside waste collections. Tonnage of waste to Green Island landfill in July to December 2025 increased 3.6% compared with July to December 2024. This was a predicted side-effect of changes that will increase the overall rate of waste diversion of waste from all landfills.
 - DCC internal waste volumes (DCC's direct contribution to Green Island landfill volumes) have steadily decreased since baseline. In line with this trend, DCC internal waste entering the landfill decreased 15% compared with the same period last year.
- 22 Emissions from **electricity consumption** were 17% lower than baseline; 6% up compared with the same period 2024/25. Increased electricity usage was caused by the landfill gas engine at Green Island Wastewater Treatment Plant (WWTP) not being operational between July 2025 and December 2025.

- **Landfill gas engine use:** In previous years the gas engine provided almost all the electricity required by the Green Island WWTP, with considerable electricity also exported to the national grid. Between July 2025 and December 2025 landfill gas was destroyed solely using the new enclosed gas flare at Green Island landfill, leading to a saving in ETS costs at the landfill. The new enclosed gas flare has a higher gas destruction certification than the gas engine, which results in lower reported landfill emissions under the ETS than if the gas engine was used instead of the flare. Moving forward, the gas engine will be used to meet the baseline electricity requirements of the Green Island WWTP, with all other landfill gas flared using the enclosed flare.
 - **Results subject to change:** Emissions from this source are a function of DCC electricity usage and the proportion of renewables in the national grid. Electricity usage (kWh) is 6% up on the same period last year and 20% lower than baseline. Results will change once MfE emissions factors are updated.
- 23 Emissions from the **biological treatment of wastewater** were 9% down compared with the same period 2024/25. At Tahuna Wastewater Treatment Plant influent was down 20%, and sludge incineration down 7%, compared with the same period in 2024/25.
- 24 **Stationary LPG** emissions are 20% higher than baseline, but 13% down compared with the same period 2024/25. The decrease in LPG consumption reflects energy systems at Toitū and Moana Pool returning to normal operations.
- **Toitū:** Energy raisers at Toitū were not operating at normal capacity in 2024, requiring increased LPG consumption to support heating services.
 - **Moana Pool:** During the 2024/25 reporting period the Moana Pool heat recovery system (powered by electricity) was disabled during construction works, leading to an increase in LPG consumption and emissions. The heat recovery system was back online during the 2025/26 reporting period, resulting in a 19% decrease in LPG emissions compared with the same period the previous year.
- 25 Explanations for changes in other significant emissions sources included in this report are as follows (for minor sources refer Attachment A):

Emissions source	Change	Explanation
Closed landfill emissions	33% lower than baseline; 5% down compared with the same period 2024/25	Emissions from closed landfills will continue to reduce without active intervention.
Stationary diesel emissions	21% lower than baseline; 10% down compared with the same period 2024/25	Reduction relative to 2024/25 was predominately influenced by the Mosgiel WWTP digester operating more efficiently. This produces more gas, meaning less diesel was required to heat the digester.
Emissions from biomass	1,300% higher than baseline; 6% up compared with the same period 2024/25	With the opening of Te Puna o Whakaehu Mosgiel Pool and the displacement of stationary diesel use at the Botanic Gardens, this emissions source has become more significant in the DCC's inventory. Both sites are now reporting consumption data. Emissions associated with combustion of biomass are relatively far lower

		than those associated with combusting LPG, diesel or coal. As such, increases in biomass emissions due to DCC switching from other higher emitting fuel sources is a positive outcome.
Emissions from composting	Not included in baseline; 3% up compared with the same period 2024/25	The DCC kerbside food and garden collection service commenced 1 July 2024 and is being composted at a Timaru facility. While there are some emissions associated with composting food and garden waste, these are significantly lower than if the same material was deposited in landfill and ensures the organic material can be beneficially re-used.

The DCC is progressing Zero Carbon Implementation Plan actions anticipated to be advanced in the 2025/26 year, though many are subject to delays or changes in scope

- 26 The Zero Carbon implementation plan 2025/26 was noted by Council in September 2025 (CNL/2025/277) and reflects actions to reduce emissions that are provided for by the 9 year plan 2025-34 and that are expected to be at least partially progressed this financial year. It includes both city-scale ('Zero Carbon Plan') actions, and DCC ('EMRP') actions.
- 27 The Zero Carbon implementation plan 2025/26 is in two parts:
- a) specific timebound projects (54)
 - b) 'business-as-usual' actions (73, ongoing as part of Council's normal operations until at least 2030, and include advocacy/partnership-based actions, and Zero Carbon Policy implementation actions)
- 28 In September 2025 the Zero Carbon Plan Advisory Panel considered and provided feedback on the draft implementation plan for 2025/26. Agreed positions included that, while progress on specific timebound projects should continue to be assessed and reported at minimum every six months, progress on 'business-as-usual actions' could be limited to end of year reporting only.
- 29 Six month progress reporting for specific timebound projects is set out in Attachment C. Progress on each action was assessed using the following RAG criteria (applied with reference to anticipated delivery timeframes at time EMRP adoption):

Green	Amber	Red
Project is on track to deliver any emissions reduction objectives, and to be completed as scheduled.	Project is not on track to meet emissions reduction objectives, and/or project is subject to minor delays or reduction in scope.	Project will not meet emissions reduction objectives and/or project is subject to major delays or reduction in scope.

- 30 Of the 54 specific timebound projects anticipated to be advanced in 2025/26, 20 are on track ('green'), 27 are subject to delays or minor scope contractions ('amber'), and 7 are subject to major delays or scope contractions ('red', several of these being on hold).

- 31 Most delays or scope contractions will not have a material impact on emissions reduction goals. However, several projects designed to improve waste diversion rates are currently on hold, which may negatively affect achievement of DCC’s 2029/30 emissions reduction target. Relevant projects include:
- a) establishment of a centralised hub for resource recovery (supporting both community and construction and demolition resource recovery), three initial community resource recovery centres, and an online platform supporting resource circularity (Zero Carbon Plan actions R1.1.2, R1.1.4, R1.1.5, R1.1.6)
 - b) priority projects and potential incentives for construction and demolition waste reduction in Dunedin (Zero Carbon Plan actions R1.4.3, R1.4.5, R1.4.6, R1.4.7, R1.4.8, R1.4.9, R1.4.10)
- 32 From an emissions perspective, reducing waste to landfill is critical to achieving DCC emissions reduction targets. Construction and demolition (C&D) waste (specifically timber) is a large emissions source which the delayed projects are designed to address. Should timber diversion from landfill be maintained at current low rates until 2029/30, this would add an estimated 4400tCO₂e to DCC’s modelled Green Island landfill emissions. This is equivalent to approximately 7% of DCC’s total 2024/25 emissions (more than emissions from electricity and LPG use combined), and would result in the DCC overshooting its 2029/30 target.
- 33 Council consideration of the C&D waste diversion projects has been deferred until 10 Year Plan, to allow budget implications to be considered against other priorities.
- 34 The delayed projects have been advanced as an integrated whole and all would help towards achievement of emissions reduction targets. Establishment of a centrally-located resource recovery hub is likely to have the greatest and most enduring impact on waste-related emissions and this will also be considered as part of the 10 Year Plan.
- 35 Other delayed/descoped actions that may impact on target achievement (if no replacement action is identified) include projects to:
- a) reduce LPG consumption at Moana Pool
 - b) support changes in DCC staff travel choices.
- 36 Moana Pool used more than half of the LPG across all DCC sites in 2024/25 (excluding leased facilities such as Wall Street Mall, and the Railway Station), generating 1,347tCO₂e in emissions. Initial advice was that improvements to the heat recovery system could reduce LPG consumption by up to 60%. It is not known how much LPG the current design (which achieves improvements within the budget allocation) will displace. Given how large a LPG consumer Moana Pool is, if the design retains higher LPG use at Moana Pool than initially projected, targets will be more challenging to achieve.
- 37 Emissions associated with staff travelling to and from work at DCC were estimated as being significantly higher than DCC’s fleet emissions in 2024/25 (staff travel causing over 550tCO₂e in emissions, compared with about 430tCO₂e in DCC fleet emissions). 90% of staff travel emissions were caused by travelling in internal combustion engine and hybrid vehicles. Staff travel survey data indicates many would like to travel by more sustainable modes of transport, however face difficulties in doing so. Achievement of any meaningful reduction in DCC’s staff travel emissions

will require actions to remove some of the barriers staff currently face when considering whether to bus, walk, cycle or scoot to and from work.

Two additional investigative actions sit outside of the EMRP

38 EMRP actions are modelled to deliver a 45% reduction in emissions from baseline by 2029/30 - shy of the short-term target of 46.2% by 2029/30. Staff are currently exploring the case for solar generation on DCC sites with large electricity consumption, and initiatives that would further reduce fleet fuel use. These projects have the potential to further reduce emissions while also delivering cost savings for the organisation.

OPTIONS

39 As this report is for noting only, there are no options.

NEXT STEPS

40 DCC’s full year organisational emissions will be independently audited and presented to Council in the annual Inventory Management Report in late 2026, along with a full year report on the Zero Carbon implementation plan 2025/26.

Signatories

Author:	Carsten Dortans - Senior Policy Analyst - Zero Carbon Rory McLean - Senior Policy Analyst - Zero Carbon Jinty MacTavish - Manager - Zero Carbon
Authoriser:	Scott MacLean - General Manager, City Services

Attachments

	Title	Page
↓A	Emissions for selected DCC sources by activity – Q1-2 25/26 compared with the same period in 24/25 and baseline	29
↓B	Emissions for selected DCC sources by location – Q1-2 25/26 compared with the same period in 24/25 and baseline	30
↓C	Six month progress reporting for timebound projects	31

SUMMARY OF CONSIDERATIONS

Fit with purpose of Local Government

Implementation of the Zero Carbon Policy, Zero Carbon Plan and EMRP promotes the economic, social and environmental wellbeing of communities in the present and for the future, by facilitating the transition to a low carbon economy.

Fit with strategic framework

	Contributes	Detracts	Not applicable
Social Wellbeing Strategy	✓	<input type="checkbox"/>	<input type="checkbox"/>
Economic Development Strategy	✓	<input type="checkbox"/>	<input type="checkbox"/>
Environment Strategy	✓	<input type="checkbox"/>	<input type="checkbox"/>
Arts and Culture Strategy	<input type="checkbox"/>	<input type="checkbox"/>	✓
3 Waters Strategy	✓	<input type="checkbox"/>	<input type="checkbox"/>
Future Development Strategy	✓	<input type="checkbox"/>	<input type="checkbox"/>
Integrated Transport Strategy	✓	<input type="checkbox"/>	<input type="checkbox"/>
Parks and Recreation Strategy	<input type="checkbox"/>	<input type="checkbox"/>	✓
Other strategic projects/policies/plans	✓	<input type="checkbox"/>	<input type="checkbox"/>

Zero Carbon Plan, DCC Emissions Management and Reduction Plan, Zero Carbon Policy

Māori Impact Statement

A Treaty of Waitangi analysis was prepared previously as part of the Zero Carbon work programme. This indicated that, in general, taking action to reduce emissions is aligned with Treaty of Waitangi obligations because a wide range of taonga are at risk from climate change. However, individual projects will need to consider Te Taki Haruru and incorporate mana whenua and mātāwaka inputs when delivered.

Sustainability

Climate change mitigation/emissions reduction efforts are considered key to sustainability. ‘Climate Action’ is one of the United Nation’s Sustainable Development Goals, reflecting the centrality of action on climate change to the achievement of sustainable development. Without significant cuts to emissions, climate change impacts will further accelerate, with commensurate negative impacts on the social, environmental, cultural and economic wellbeing of New Zealand communities. Conversely, actions to reduce emissions generally have significant co-benefits in terms of community wellbeing.

LTP/Annual Plan / Financial Strategy /Infrastructure Strategy

There are no implications from this report for the LTP or Annual Plan.

Financial considerations

There are no financial implications.

Significance

This report is considered low significance in terms of the Council’s Significance and Engagement Policy.

Engagement – external

There has been no external engagement as part of developing this report.

SUMMARY OF CONSIDERATIONS

Engagement - internal

All lead teams have been consulted to develop the reporting status and associated commentary.

Risks: Legal / Health and Safety etc.

As stated in the report, remaining on track to achieve EMRP targets is a prerequisite to maintaining access to the Local Government Financing Authority’s Climate Action Loan programme. Non-achievement of targets may pose reputational risk for the DCC.

Conflict of Interest

No conflicts of interest have been identified

Community Boards

No implications for Community Boards have been identified.

Attachment A: Emissions for selected DCC sources by activity – Q1-2 25/26 compared with the same period in 24/25 and baseline¹²

		Q1-2				
		Baseline	24/25	25/26	Variance 25/26 - Baseline	Variance 25/26 - 24/25
Emission Type	Emissions Sub-Group	t CO ₂ e	t CO ₂ e	t CO ₂ e	%	%
Energy	Biomass	6.53	87.60	93.24	1327%	6%
	Diesel stationary energy	378.77	331.58	298.57	-21%	-10%
	Electricity	1,852.71	1,452.79	1,538.97	-17%	6%
	LPG	992.22	1,358.81	1,186.35	20%	-13%
Fleet Fuel	Diesel	167.02	182.36	184.50	10%	1%
	Electricity	0.00	0.0001	0.00	0%	-100%
	LPG	0.00	0.00	0.03	0%	100%
	Petrol	81.57	42.69	40.75	-50%	-5%
Waste and Recycling	Closed landfill emissions	4,262.62	3,015.50	2,865.50	-33%	-5%
	Composting	-	1,445.14	1,482.13	-	3%
	Waste to landfill	28,985.81	13,119.35	15,059.45	-48%	15%
Water Treatment	Sludge disposed at private landfill	-	7.85	54.57	-	595%
	WWTP	4,982.68	4,944.43	4,474.60	-10%	-10%
Business Travel	Air travel	156.24	75.61	51.82	-67%	-31%
	Hotel stays	2.01	1.19	2.05	2%	72%
	Private cars	11.22	12.25	11.27	0.4%	-8%
	Rental cars	0.07	0.85	0.52	616%	-39%
	Staff Travel to Work	262.64	290.30	330.89	26%	14%
	Taxis	1.16	0.34	0.38	-68%	10%
Total		42,143.27	26,368.63	27,675.59	-34%	5%

¹ Please note that a dash (-) indicates that no data was recorded.

² Please note that a relatively high variance must be seen in relation to its absolute value.

Attachment B: Emissions for selected DCC sources by location – Q1-2 25/26 compared with the same period in 24/25 and baseline¹²

Emission Type	Emissions Sub-Group	Locations	Q1-2				
			Baseline t CO ₂ e	24/25 t CO ₂ e	25/26 t CO ₂ e	Variance 25/26 - Baseline %	Variance 25/26 - 24/25 %
Energy	Biomass	Botanic Garden	6.53	18.30	19.62	200%	7%
		Mosgiel Pool	-	69.30	73.61	-	6%
	Diesel stationary energy	Botanic Garden	10.28	0.00	0.00	-100%	0%
		Green Island WWTP	4.41	0.37	1.67	-62%	354%
		Mosgiel WWTP	10.69	49.36	29.99	180%	-39%
		Musselburgh WW PS/screening plant	7.04	26.30	14.62	108%	-44%
		Tahuna WWTP	346.34	255.55	252.29	-27%	-1%
	Electricity	Across DCC	1,852.71	1,452.79	1,538.97	-17%	6%
		Andersons Bay Crematorium	76.13	88.99	80.18	5%	-10%
	LPG	Caledonian Gym	0.00	0.05	0.00	0%	-100%
		Civic Centre-Operations	187.63	243.04	243.64	30%	0%
		Dunedin Public Art Gallery	110.33	144.91	137.52	25%	-5%
		Moana Pool	544.66	776.58	626.12	15%	-19%
		Mosgiel Memorial Gym	23.08	25.43	34.01	47%	34%
		Other DCC Sites	7.60	11.18	8.49	12%	-24%
St Clair Saltwater Pool		4.53	7.49	6.05	34%	-19%	
Toitu Otago Settlers Museum		35.55	52.45	44.81	26%	-15%	
Fleet Fuel	Diesel	University Oval	2.70	8.69	5.53	105%	-36%
		3 Waters	101.64	129.14	135.99	34%	5%
		Building Services	9.61	3.14	1.77	-82%	-44%
		Other DCC departments	53.20	50.07	46.75	-12%	-7%
	Electricity	Parks and Recreation	2.57	0.00	0.00	-100%	0%
		Other DCC departments	0.00	0.00	0.00	0%	-100%
	LPG	3 Waters	0.00	0.00	0.03	0%	100%
		3 Waters	10.18	3.08	2.30	0%	-25%
	Petrol	Building Services	21.33	17.02	17.67	0%	4%
		Other DCC departments	42.81	20.71	16.72	-61%	-19%
Parks and Recreation		7.25	1.87	4.05	0%	116%	
Waste and Recycling	Closed landfill emissions	Various	4,262.62	3,015.50	2,865.50	-33%	-5%
	Composting	Waste and Environmental Solutions	-	1,445.14	1,482.13	-	3%
Water Treatment	Waste to landfill	Green Island Landfill	28,985.81	13,119.35	15,059.45	-48%	15%
	Sludge disposed at private landfill	Various	-	7.85	54.57	-	595%
		Green Island WWTP	1,836.90	1,653.90	1,655.54	-10%	0%
	WWTP	Mosgiel WWTP	374.76	382.34	402.79	7%	5%
		Tahuna WWTP	2,630.84	2,769.15	2,277.23	-13%	-18%
Business Travel	Air travel	Waikouaiti & Others WTP	140.19	139.04	139.04	-1%	0%
		Across DCC	156.24	75.61	51.82	-67%	-31%
	Hotel stays	Across DCC	2.01	1.19	2.05	2%	72%
	Private cars	Across DCC	11.22	12.25	11.27	0.4%	-8%
	Rental cars	Across DCC	0.07	0.85	0.52	616%	-39%
	Staff Travel to Work	Across DCC	262.64	290.30	330.89	26%	14%
	Taxis	Across DCC	1.16	0.34	0.38	-68%	10%
Total			42,143.27	26,368.63	27,675.59	-34%	5%

¹ Please note that a dash (-) indicates that no data was recorded.

² Please note that a relatively high variance must be seen in relation to its absolute value.

Attachment C: Six month progress reporting for Specific Timebound Projects in the Zero Carbon Implementation Plan 2025/26

Reference #	Description	Timeframe	DCC Lead	RAG Status	Comment
Resource Use and Waste					
KS1	Use resources in a more circular way				
KS2	Divert more waste from landfill				
AA 1	Enable communities to re-use and recycle resources				
R1.1.3	Provide rural recycling hubs	2025/26-2033/34	Waste and Environmental Solutions	A	Not progressed due to the requirement for additional operational expenditure to service additional recycling dropoff points.
R1.1.4	Work with community partners to support three or more communities to establish new community-led resource/recycling centres in local neighbourhoods	2025/26-2027/28	Waste and Environmental Solutions	R	Council consideration of next steps for this project has been deferred until 10 Year Plan.
R1.1.5	Complete business case for a wider network of community-led resource/recycling centres in local neighbourhoods	2025/26	Waste and Environmental Solutions	R	Council consideration of next steps for this project has been deferred until 10 Year Plan.
R1.1.6	Support communities to operate and develop community-led resource/recycling centres into self-sustaining operating models	2025/26-2027/28	Waste and Environmental Solutions	R	Council consideration of next steps for this project has been deferred until 10 Year Plan.
R1.1.9	Deliver City Recycling Hubs	2025/26-2033/34	Waste and Environmental Solutions	R	One new hub facility to be installed as part of the new ORC headquarters building. No other suitable locations available at the present time.
AA 3	Enable food and garden organics to be composted				
R1.3.1	Construct new Green Island composting facility	2025/26-26/27	Waste and Environmental Solutions	A	Construction underway. Project delayed due to a four-month minimum pre-load of the building site to eliminate the risk of differential settlement. Completion scheduled for February 2027.
AA 4	Enable construction waste to be reduced, re-used and recycled				
R1.4.1	Construct Green Island facility for storing timber diverted from landfill	2025/26 - 27/28	Waste and Environmental Solutions	G	
R1.4.3	Explore with community partners the potential for construction waste re-use hub(s)	2025/26	Waste and Environmental Solutions	R	Council consideration of next steps for this project has been deferred until 10 Year Plan.
R1.4.5	Explore options for incentives to encourage low carbon, circular, low waste design for construction projects	2025/26	Waste and Environmental Solutions	A	Council consideration of next steps for this project has been deferred until 10 Year Plan.

Attachment C: Six month progress reporting for Specific Timebound Projects in the Zero Carbon Implementation Plan 2025/26

Reference #	Description	Timeframe	DCC Lead	RAG Status	Comment
R1.4.6	Implement incentives for low carbon, circular, low waste design for construction projects	2025/26-2030/31	Waste and Environmental Solutions	A	Some actions progressing. Council consideration of next steps for this project has been deferred until 10 Year Plan.
R1.4.7	Explore ways to support the establishment and operation of building deconstruction services	2025/26	Waste and Environmental Solutions	A	Council consideration of next steps for this project has been deferred until 10 Year Plan.
R1.4.8	Support the establishment and operation of building deconstruction services	2025/26-2030/31	Waste and Environmental Solutions	A	Some actions progressing. Council consideration of next steps for this project has been deferred until 10 Year Plan.
R1.4.9	Deliver a pilot programme for construction waste separation	2025/26	Waste and Environmental Solutions	A	Council consideration of next steps for this project has been deferred until 10 Year Plan.
R1.4.10	Undertake and publish case studies on separating construction waste and reducing waste in design	2025/26	Waste and Environmental Solutions	A	Some actions progressing. Council consideration of next steps for this project has been deferred until 10 Year Plan.
R1.4.11	Publish information about best practice for reducing construction material use and waste through design and construction	2025/26	Waste and Environmental Solutions	G	
AA 5	Enhance waste minimisation education and facilities				
R1.5.2	Construct new resource recovery park at Green Island to provide infrastructure for waste diversion	2025/26-2027/28	Waste and Environmental Solutions	A	Construction underway. Significant delay due to the requirement to 'pre load' the building sites for a minimum of four months to prevent differential settlement.
AA 6	Improve data on resource use and waste				
R1.6.3	Undertake study to determine source of paper sent to landfill	2025/26	Waste and Environmental Solutions	A	SWAP, including more detailed information on paper sent to landfill, will be completed in mid 2026.
R1.6.4	Use findings from R1.6.3 to plan and implement actions to reduce, re-use, or recycle paper	2025/26-2030/31	Waste and Environmental Solutions	A	To follow completion of SWAP
R1.6.5	Undertake study to determine source and composition of textiles sent to landfill	2025/26	Waste and Environmental Solutions	A	SWAP, including more detailed information on paper sent to landfill, will be completed in mid 2026.

Attachment C: Six month progress reporting for Specific Timebound Projects in the Zero Carbon Implementation Plan 2025/26

Reference #	Description	Timeframe	DCC Lead	RAG Status	Comment
R1.6.6	Use findings to plan and implement actions to reduce, re-use, or recycle textiles	2025/26-2030/31	Waste and Environmental Solutions	A	To follow completion of SWAP
KS 3	Improve landfill and wastewater gas management				
AA 7	Divert biosolids and minimise emissions from wastewater treatment				
R3.7.1	Complete business case for bioresources facility	2025/26	3 Waters	G	
AA 8	Improve landfill and wastewater gas capture				
R3.8.4	Deliver a gas flare at Mosgiel Wastewater Treatment Plant	2026/27	3 Waters	A	Design work complete, consent being prepared. Delivery now expected 26/27.
R3.8.5	Undertake monitoring and explore other improvements to the capture and destruction of greenhouse gases produced in wastewater treatment processes	2025/26-2026/27	3 Waters	A	Feasibility study complete. Delivery now expected 26/27.
Transport and Urban Form					
KS1	Nurture low emissions urban form				
AA 2	Strengthen neighbourhood centres				
T1.2.2	Consider actions to promote the use and reuse of historic buildings, including through residential use, as part of Heritage Action Plan implementation plan development	2025/2026-2026/2027	Advisory Services	G	
T1.2.3a	Deliver Minor Streetscape Upgrades	2025/26-2027/28 and 2032/33-2033/34	Advisory Services	G	
T1.2.6	Complete South Dunedin Library	2025/26	Property	G	
KS 3	Unlock remote solutions				
AA 8	Provide virtual and low-emissions mobile solutions				
T3.8.3	Deliver DCC eServices programme	2026/25-2033/34	Business Information Services	G	
KS 4	Develop convenient and attractive cycling and walking networks and public transport services				

Attachment C: Six month progress reporting for Specific Timebound Projects in the Zero Carbon Implementation Plan 2025/26

Reference #	Description	Timeframe	DCC Lead	RAG Status	Comment
AA 9	Complete urban cycleway networks and improve priority pedestrian networks				
T4.9.1	Develop <i>Otepoti - Dunedin pathways: A walking and cycling plan</i> that aligns with Zero Carbon goals	2025/26	Transport	G	
T4.9.3	Work with the Dunedin Tunnels Trail Trust to deliver the Dunedin Tunnels Trail	2025/2026-2027/2028	Transport	G	
T4.9.15	Work with NZTA to deliver SFDT Central City Cycle and Pedestrian Improvements - St Andrew St	2025/26-2029/30	Transport	A	This work is dependent on NZTA's State Highway improvements and project/funding decisions that will be made later in the year.
T.4.9.22	Deliver South Dunedin Safer School Streets	2025/26-2029/30	Transport	A	Transport are delivering components of the South Dunedin Safer Streets programme through the Low Cost Low Risk programme.
T4.9.24	Deliver low cost, low risk improvements	2025/26-2033/34	Transport	G	
AA 12	Support improvements in the quality and consistency of bus stops and bike facilities				
T4.12.5	Work with the ORC to develop a collaborative plan for the bus stop network with an initial focus on high frequency routes	2025/26	Transport	G	
KS 5	Boost travel demand management to support use of active and public modes				
AA 13	Align parking management and consider other pricing mechanisms				
T5.13.1	Develop a Parking Strategy that aligns with Zero Carbon goals	2025/26	Transport	A	Subject to Council approvals, public consultation early in the second half of the year (delayed due to consultation schedules)
AA 14	Establish and promote car share				
T5.14.1	Facilitate establishment of commercial car share in Dunedin	2025/26-2026/27	Transport	G	
AA 15	Expand workplace and school travel planning and road safety promotion				
T5.15.7a	Explore options to encourage and enable greater uptake of public transport by DCC staff	2025/26	Transport	G	
T5.15.7e	Investigate options to encourage and enable greater uptake of e-bikes by DCC staff	2025/26	Transport	R	ELT decision not to advance due to other priorities (including replacing the finance system)

Attachment C: Six month progress reporting for Specific Timebound Projects in the Zero Carbon Implementation Plan 2025/26

Reference #	Description	Timeframe	DCC Lead	RAG Status	Comment
T5.15.7f	Implement preferred e-bike option for DCC staff - please note that a decision on this action is deferred until all implications are known, including financial and resourcing	Ongoing from 2025/26	Transport	R	ELT decision not to advance due to other priorities (including replacing the finance system)
AA 17	Improve connections between modes				
T5.17.1a	Deliver SFDT Mosgiel Park and Ride project, including consideration of connection between modes	2025/26	Transport	G	
KS 6	Shift freight to low emissions modes				
AA 18	Support freight to shift to rail and coastal shipping				
T6.18.3a	Deliver the Mosgiel Transport Study	2025/26	Transport	G	
KS 7	Electrify light vehicles				
AA21	Support electrification of service vehicles and last mile delivery				
T7.21.3	Invest in infrastructure to support continued DCC fleet electrification	2025/26	Property/Fleet	A	Physical works scoped and priced. Alternative/complementary approaches being explored. Some delays.
Buildings, Energy and Industry					
KS1	Switch to low carbon stationary energy sources				
KS2	Improve energy efficiency of buildings and industry				
AA 1	Support the transition to fossil-fuel free process heat				
E1.1.3a	Explore options to support businesses using fossil fuelled boilers/process heat with a capacity less than 500kW (especially LPG boilers) to develop decarbonisation plans	2024/25-2025/26	Zero Carbon	G	
AA 2	Replace fossil fuels and improve energy efficiency of DCC facilities				
E1.2.1	Deliver heat recovery system at Moana Pool	2025/2026-2026/2027	Parks and Recreation Services	A	Still in design phase. Heat recovery still planning to be replaced as part of AHU works. Reduction in LPG reliance is anticipated to be delivered under the new design, but has not yet been quantified. It is likely to differ from the reduction built into EMRP modelling.
E1.2.11	Implement preferred option to improve the overall energy efficiency and reduce LPG use at Andersons Bay Crematorium	2025/26-2026/27	Parks and Recreation Services	G	

Attachment C: Six month progress reporting for Specific Timebound Projects in the Zero Carbon Implementation Plan 2025/26

Reference #	Description	Timeframe	DCC Lead	RAG Status	Comment
AA 3	Support energy efficiency and the transition away from fossil fuels in homes				
E1.3.1	Explore options to increase residential and community energy efficiency and address energy hardship through Housing Action Plan implementation, and design programme or solution	2025/26	Housing	A	Descoped to focus on cost-neutral options.
E1.3.2	Pilot residential energy efficiency programme	2023/24-2026/27	Housing	A	Due to a reduced budget, the scale of the project has been reduced. Kits are being distributed in the community when households are identified.
E1.3.3	Explore options to promote or incentivise transition to low emissions solutions for heating and cooking in existing homes	2025/26	Zero Carbon	A	Descoped to focus on cost-neutral options. In late 2025 staff worked with community partners to put on the first Electrify Dunedin event, promoting low emissions heating solutions.
E1.3.5	Explore options to promote or incentivise energy efficient, low emissions new builds and retrofits	2025/26	Housing	A	Descoped to focus on cost-neutral options. Pre-existing programmes continue as per BAU.
KS3	Increase local renewable generation				
AA 5	Grow renewable energy generation in the community				
E3.5.2	Explore options to promote or incentivise renewable energy generation on community assets and residential property	2025/26	Zero Carbon	A	Descoped to focus on cost-neutral options. In late 2025 staff worked with community partners to put on the first Electrify Dunedin event, promoting renewable energy generation.
Forestry, Land and Agriculture					
KS2	Grow sequestration that aligns with mana whenua and community values				
AA 2	Support growth of sequestration that aligns with mana whenua and community values				
F2.2.2	Explore options to encourage and support growth in sequestration that aligns with mana whenua and community values, including the role of DCC and DCHL offsetting (if any)	2024/25-2025/26	Zero Carbon	G	
F2.2.4	Develop a Green and Blue Networks Plan for Dunedin, including options for sequestration on DCC-owned land	2025/26	Advisory Services	A	Delays due to constraints on team capacity. Delivery now anticipated 2026/27.

DUNEDIN CITY GREENHOUSE GAS EMISSIONS INVENTORY FOR THE 2025 FINANCIAL YEAR

Department: Zero Carbon

EXECUTIVE SUMMARY

- 1 This report provides an update on Dunedin’s city-wide emissions for 2024/25, showing gross emissions have reduced 13% from 2018/19 to 2024/25.
- 2 City-wide emissions modelling is being updated using the 2024/25 emissions inventory, with this modelling to be presented to Council later in 2026 alongside city-wide emissions target options.
- 3 Full advice will be presented to Council on city-wide emissions target options once the modelling update has been completed. However, with respect to achievement of targets, the updated inventory does not materially change staff advice presented to Council in May 2025, that being:
 - a) it is very unlikely that the ‘net zero’ limb of the city’s target can be achieved by 2030, and
 - b) it is likely that the ‘biogenic methane’ limb of the city’s target will be achieved by 2030.

RECOMMENDATIONS

That the Committee:

- a) **Notes** the Dunedin City Greenhouse Gas Emissions Inventory for the 2025 Financial Year

BACKGROUND

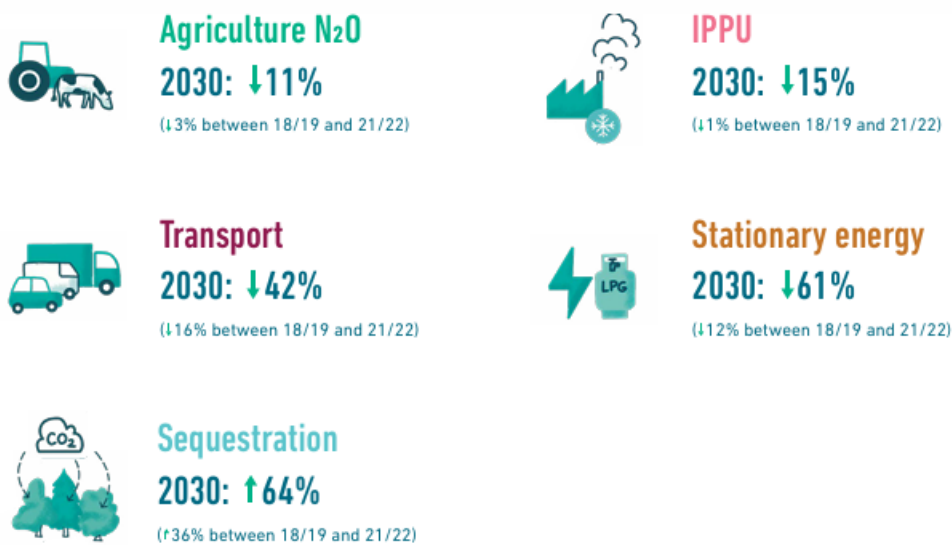
The DCC is seeking to manage and reduce greenhouse gas emissions at both the city and DCC scale

- 4 The DCC is seeking to manage and reduce emissions at two scales, as directed by the Zero Carbon Policy: city (Dunedin emissions) and organisational (DCC emissions). This report relates to measurement of city scale emissions.
- 5 At the city scale, the DCC has adopted a city emissions reduction target in two parts:
 - net zero emissions of all greenhouse gases other than biogenic methane by 2030, and
 - 24% to 47% reduction below 2017 biogenic methane emissions by 2050, including 10% reduction below 2017 biogenic methane emissions by 2030.
- 6 Net zero carbon means that any greenhouse gases (excluding biogenic methane) emitted into the atmosphere in Dunedin are in balance with the amount of carbon absorbed out of the atmosphere by trees, also known as sequestration. It can be visualised as a balanced seesaw:

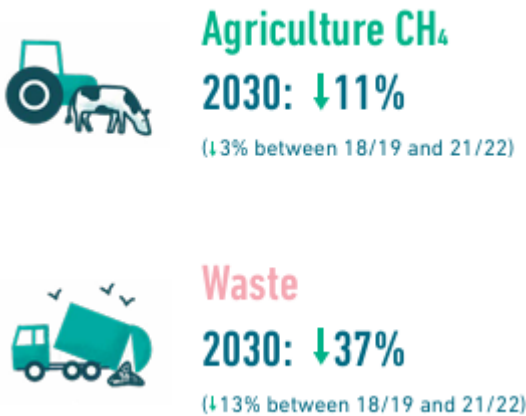


The Zero Carbon Plan mapped out a path to achieve the city’s target

- 7 In September 2023, Council adopted an emissions reduction plan for Dunedin: The Zero Carbon Plan 2030. The Zero Carbon Plan set out a pathway to achieve the city’s target, building on trends already underway.
- 8 The 2023 modelling that underpinned the Zero Carbon Plan built in the context at the time - emissions reduction targets and commitments made by government and other entities, as well as planned DCC actions. It concluded that achieving the city’s targets would require a wide range of government, community, and business stakeholders to pull all available levers as hard as credibly possible.
- 9 2023 modelling identified that the following reductions (relative to 2018/19) would be required to achieve ‘net zero’ for Dunedin (excluding biogenic methane):



- 10 2023 modelling estimated the following reductions (relative to 2018/19) would be required to achieve the biogenic methane target by 2030:



Updated May 2025 modelling

- 11 Following significant changes in local and national context between 2023 and 2025, updated city scale emissions modelling was presented to Council in May 2025 (**CNL/2025/131**). This modelling showed that while Dunedin was on track to meet the 10% reduction of biogenic methane by 2030, it is not on track to meet the net zero all other gases 2030 target.
- 12 The May 2025 city emissions modelling relied upon the most up-to-date city emissions inventory at that time, which covered up to the end of the 2021/22 financial year. This report provides an updated emissions inventory covering until the end of 2024/25, which will be used to update city level emissions modelling, and to develop advice for Council on city-wide emissions reduction targets.

DISCUSSION

- 13 A city-wide community greenhouse gas emissions inventory update has been completed in January 2026 covering 2018/19 to 2024/25 financial reporting years (Attachment A). As directed by the Zero Carbon Policy, emissions in the Dunedin City Territorial Area were estimated using the production-based Global Protocol for Community-Scale Greenhouse Gas Emissions Inventory (GPC) methodology. This method covers the key sectors of Transport, Stationary Energy, Waste, Industrial Processes and Product Use (IPPU), Agriculture, and Forestry. Production-based approaches exclude global emissions relating to consumption, such as the emissions used elsewhere to produce products used/consumed within Dunedin.
- 14 The emissions inventory update was completed for the DCC by AECOM (who specialise in undertaking emissions inventories for local authorities) and supersedes the previous footprint completed in late 2022 (which covered up to the 2021/22 financial year).
- 15 The latest update uses current best-practice, and up-to-date data for all years, allowing for like-for-like comparisons. While there is inherent uncertainty in estimating emissions, using consistent methodology and data sources between years allows trends and changes over the years to be assessed.

Overall results

16 In 2024/25, **Dunedin’s total gross emissions⁴** were 1,416,010tCO₂e⁵, while **Dunedin’s total net emissions** were 1,119,876tCO₂e. Figure 1 and Table 1 show the breakdown by sector of Dunedin’s gross emissions in 2024/25:

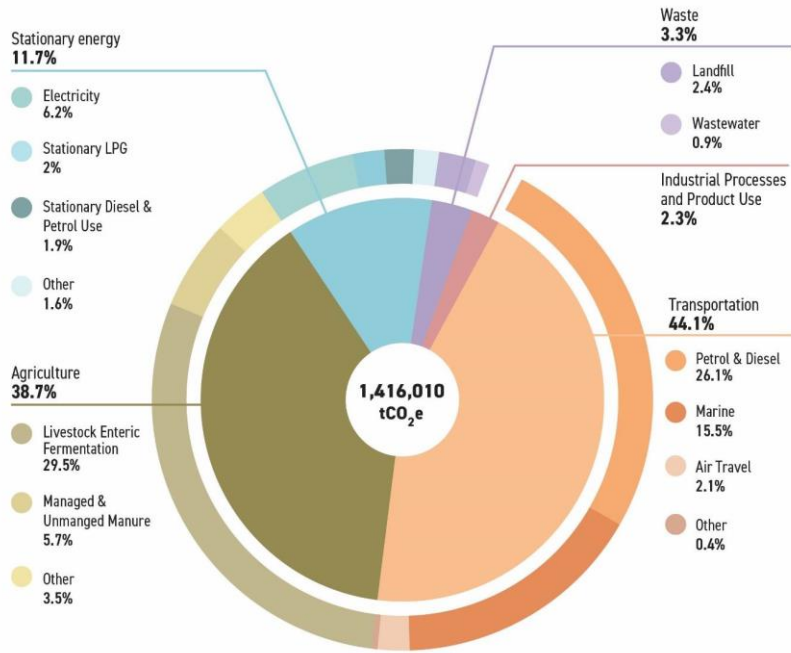


Figure 1 – Dunedin City’s total gross 2024/25 GHG emissions split by sector (tCO₂e)

Table 1 – Dunedin City 2024/25 Emissions by Source

Emission Sources		Emissions (tCO ₂ e)	Percentage of Total Gross Emissions (%)
Transport	On-Road Transport	322,938	22.8%
	Off-Road Transport	48,118	3.4%
	Marine Transport	219,763	15.5%
	Air Travel	29,512	2.1%
	Rail	3,797	0.3%
Stationary Energy	Electricity Consumption	87,957	6.2%
	Stationary Diesel and Petrol Use	26,617	1.9%
	Stationary LPG	28,778	2.0%
	Coal	13,329	0.9%
	Biofuel	9,140	0.6%
	Biogas	73	0.01%
Waste	Solid Waste (Landfill)	33,535	2.4%

⁴ **Total gross emissions** refers to all emissions put into the atmosphere and doesn’t include emissions removed from the atmosphere from forestry (known as sequestration). **Total net emissions** refers to total gross emissions less emissions removed from the atmosphere.

⁵ Emissions are expressed on a tonnes of carbon dioxide-equivalent basis (tCO₂e), using the Intergovernmental Panel on Climate Change’s 100-year Global Warming Potential (GWP) values.

	Wastewater Treatment	12,556	0.9%
IPPU	Refrigerant and Air Conditioning Gases	29,959	2.1%
	Other Industrial Gases	2,634	0.2%
Agriculture	Agriculture	547,303	38.7%
Total Gross Emissions		1,416,010	100%

Changes between 2018/19 and 2024/25

- 17 The Zero Carbon Plan uses the 2018/19 financial year as a baseline upon which to compare city-wide emissions against. Between 2018/19 and 2024/25:
- a) **Dunedin’s total gross emissions** reduced 13%, from 1,619,536tCO₂e in 2018/19 to 1,416,010tCO₂e in 2024/25.
 - b) **Dunedin’s total net emissions** reduced 11%, from 1,258,198tCO₂e in 2018/19 to 1,119,876tCO₂e.
 - c) **Dunedin’s total net emissions (excluding biogenic methane)⁶** reduced 9%, from 704,845tCO₂e in 2018/19 to 641,057tCO₂e in 2024/25.
 - d) **Dunedin’s total biogenic methane emissions** reduced 13%, from 553,353tCO₂e in 2018/19 to 478,819tCO₂e in 2024/25.
- 18 Key drivers of the trends from 2018/19 to 2024/25 by sector were as follows, as shown in Table 2 below:
- a) Emissions from **Transport** decreased by 8% between 2018/19 and 2024/25, from 677,210tCO₂e to 624,128tCO₂e. This reduction was mainly driven by a 7% reduction in marine freight emissions, a 30% reduction in cruise ship emissions, and 32% reduction in air travel emissions over this period. There was also a small 2% reduction in on-road transport emissions.
 - b) Emissions from **Waste** decreased by 50% between 2018/19 and 2024/25, from 92,661tCO₂e to 46,092tCO₂e⁷. This was driven by a reduction in annual emissions from landfill due to improvements to landfill gas capture, the gradual decrease in emissions from closed landfill sites, and to a lesser extent diversion of some organic material from landfill via kerbside green waste composting services⁸.

⁶ **Total gross/net emissions excluding biogenic methane** refers to all emissions less biogenic methane emissions (in line with the Zero Carbon 2030 target).

⁷ The method used to calculate solid waste emissions at Green Island landfill differs from the method used to calculate emissions for DCC’s organisational emissions inventory, and also includes emissions from non-DCC landfills. As such, the DCC’s organisational emissions inventory cannot be directly compared with the city-wide solid waste emissions for 2024/25.

⁸ Accurate measurement of solid waste emissions at the city scale is limited by the lack of data available on privately collected waste deposited at either private Dunedin landfills, or non-DCC landfills outside of Dunedin city. Given waste emissions (comprising solid waste to landfill, composting, and wastewater) only make up 3% of total gross emissions, the lack of data on private landfill operators is not considered material to the overall results

- c) Emissions from **Stationary Energy** decreased by 19% between 2018/19 and 2024/25, from 204,735tCO₂e to 165,894tCO₂e. This was driven by a 70% reduction in emissions from burning coal, and a 12% reduction in emissions associated with electricity consumption. Reductions in electricity consumption emissions were due to an 11% reduction in the emissions per kWh of electricity generated. Actual electricity consumption increased 2% between 2018/19 and 2024/25. The reduction in coal use was primarily due to boiler conversions from coal to biomass at the Dunedin Energy Centre, along with reductions due to all coal school boilers converting to biomass or electric heating by 2024/25 as part of the Ministry of Education’s School Coal Boiler Replacement Programme.
- d) Emissions from **Agriculture** decreased 9% between 2018/19 and 2024/25, from 600,515tCO₂e to 547,303tCO₂e. This decrease was mainly due to an estimated 10% reduction in sheep numbers, and 16% reduction in dairy cattle numbers over the period.⁹
- e) Emissions from **Industrial Processes and Product Use (IPPU)** decreased 27% between 2018/19 and 2024/25, from 44,415tCO₂e to 32,593tCO₂e. This was driven by an ongoing trend towards using less emissions-intensive refrigerants and air conditioning gases in appliances.
- f) **Net Forestry** sequestration decreased 18% between 2018/19 and 2024/25 (18% less carbon dioxide was absorbed), from -361,337tCO₂ to -296,134tCO₂. The reduction in net forestry sequestration over this period is due to an increase in forestry harvested in 2024/25 compared with 2018/19. Sequestration from indigenous vegetation remained the same throughout 2018/19 to 2024/25. Sequestration from exotic commercial forestry is variable from year to year. Some years having more harvesting and some years more forest growth, depending on the age of trees and market conditions. The extent of the commercial forestry estate in Dunedin City actually increased over this period, from 16,087 hectares in 2018/19 to 17,298 hectares. All other factors being equal, this suggests the average forestry sequestration for Dunedin will increase over the coming years, as recently planted trees reach maturity.

19 Changes in gross emissions between 2018/19 and 2024/25 are shown in Table 2, split by emissions source.

Table 2 – Gross Emissions changes from 2018/19 to 2024/25 by emissions source

Sector / Emissions Source.		Emissions (tCO ₂ e)		Percentage Change 18/19 – 24/25 (%)
		2018/19	2024/25	
Transport	On-Road	330,316	322,938	-2%
	Rail	4,559	3,797	-17%
	Air travel	43,354	29,512	-32%
	Marine	251,240	219,763	-13%
	Off-Road	47,741	48,118	1%
	Electricity Consumption	100,366	87,957	-12%

⁹These results are based on livestock and fertiliser data for Dunedin City from the 2017 Agricultural Census (StatsNZ), with regional data covering the subsequent years used to estimate the change in livestock and fertiliser use since 2017. The approach has known limitations, as changes in agriculture in the Otago region may not reflect changes in the Dunedin City area.

Stationary Energy	Stationary Diesel and Petrol Use	26,416	26,617	1%
	LPG	29,197	28,778	-1%
	Coal	44,077	13,329	-70%
	Biofuel	4,650	9,140	97%
	Biogas	27	73	168%
Waste	Solid Waste (Landfill)	80,279	33,535	-58%
	Wastewater Treatment	12,383	12,556	1%
IPPU	Refrigerant and Air Conditioning Gases	41,330	29,959	-28%
	Other Industrial Gases	3,085	2,634	-15%
Agriculture	Agriculture	600,515	547,303	-9%
Total Gross Emissions		1,619,536	1,416,010	-13%

Provisional advice on implications of trends for emissions reduction targets

- 20 City-wide emissions modelling is being updated to incorporate the findings of the 2024/25 emissions inventory.
- 21 Emissions outcomes at the city scale can be difficult to predict. There are a wide range of external influences, which can have significant impacts on emissions at short notice. Progress is also not linear. As shown by increases in transport emissions between 2021/22 and 2024/25, emissions reductions in any given year are not always enduring. Conversely, emissions can reduce quickly when investment in infrastructure or community uptake reaches certain ‘tipping points’. The significant reductions in coal use and associated emissions documented in the inventory are an example of this.
- 22 The updated modelling will inform advice to Council on city-wide emissions targets. However, with respect to achievement of targets, the updated inventory does not materially change staff advice presented to Council in May 2025 (**CNL/2025/131**), that being:
 - a) it is very unlikely that the ‘net zero’ limb of the city’s target can be achieved by 2030, and
 - b) it is likely that the ‘biogenic methane’ limb of the city’s target will be achieved by 2030.
- 23 As shown in Table 3 below, while gross emissions (excluding biogenic methane) are 12% down in 2024/25 compared with 2018/19, they have increased slightly compared with 2021/22. A major driver of this is that no cruise ships visited in 2021/22, with 41,049tCO₂e emissions associated with cruise ships in 2024/25.
- 24 Net emissions (excluding biogenic methane) are 9% down in 2024/25 compared with 2018/19, however they are significantly higher than net emissions were in 2021/22. This is primarily due to changes in net forestry sequestration, which is variable depending on exotic forestry harvest cycles.
- 25 Biogenic methane emissions in 2024/25 are 13% lower than in 2018/19, and 8% lower than in 2021/22. This exceeds the target for a 10% reduction by 2030. This suggests Dunedin is tracking well to meet the biogenic methane target for 2030.

Table 3 – Change in Emissions between 2018/19 and 2024/25 by emissions category

Emissions Category (tCO ₂ e)	2018/19	2021/22	2024/25	% change
Total Gross Emissions (excl biogenic methane)	1,066,182	900,175	937,191	-12%
Forestry Net Emissions	- 361,337	- 472,435	- 296,134	-18%
Total Net Emissions (excl biogenic methane)	704,845	427,740	641,057	-9%
Total Biogenic Methane Emissions	553,353	520,388	478,819	-13%

OPTIONS

26 There are no options, as this is a noting report only.

NEXT STEPS

27 City-wide emissions modelling is being updated, building in the findings of the 2024/25 emissions inventory. The updated modelling will inform advice to Council on city-wide emissions targets.

Signatories

Author:	Rory McLean - Senior Policy Analyst - Zero Carbon
Authoriser:	Jinty MacTavish - Manager - Zero Carbon

Attachments

	Title	Page
↓A	Dunedin City Greenhouse Gas Emissions Inventory 2025	48

SUMMARY OF CONSIDERATIONS

Fit with purpose of Local Government

Tracking trends in city emissions promotes the social, economic and environmental wellbeing of communities in the present and for the future, by helping to target emissions reduction action.

Fit with strategic framework

	Contributes	Detracts	Not applicable
Social Wellbeing Strategy	✓	<input type="checkbox"/>	<input type="checkbox"/>
Economic Development Strategy	✓	<input type="checkbox"/>	<input type="checkbox"/>
Environment Strategy	✓	<input type="checkbox"/>	<input type="checkbox"/>
Arts and Culture Strategy	<input type="checkbox"/>	<input type="checkbox"/>	✓
3 Waters Strategy	✓	<input type="checkbox"/>	<input type="checkbox"/>
Future Development Strategy	✓	<input type="checkbox"/>	<input type="checkbox"/>
Integrated Transport Strategy	✓	<input type="checkbox"/>	<input type="checkbox"/>
Parks and Recreation Strategy	✓	<input type="checkbox"/>	<input type="checkbox"/>
Other strategic projects/policies/plans	✓	<input type="checkbox"/>	<input type="checkbox"/>

Tracking trends in city emissions gives effect to the Zero Carbon Policy and aligns with the Zero Carbon Plan.

Māori Impact Statement

A critical Treaty of Waitangi analysis was prepared previously as part of the Zero Carbon work programme. This indicated that, in general, taking action to reduce emissions is aligned with Treaty of Waitangi obligations because a wide range of taonga are at risk from climate change. This report provides an update on greenhouse gas emissions across the city, which will inform future decisions on actions to reduce emissions.

Sustainability

Climate change mitigation/emissions reduction efforts are considered key to sustainability. ‘Climate Action’ is one of the United Nation’s Sustainable Development Goals, reflecting the centrality of action on climate change to the achievement of sustainable development. Without significant cuts to emissions, climate change impacts will further accelerate, with commensurate negative impacts on the social, environmental, cultural and economic wellbeing of New Zealand communities. Conversely, actions to reduce emissions generally have significant co-benefits in terms of community wellbeing. This report provides an update on greenhouse gas emissions across the city, which will inform future decisions on actions to reduce emissions.

LTP/Annual Plan / Financial Strategy /Infrastructure Strategy

There are no implications from this report for the LTP or Annual Plan.

Financial considerations

This report has no financial implications.

Significance

This report is considered low significance in terms of the Council’s Significance and Engagement Policy.

Engagement – external

There has been no external engagement.

ITEMS FOR CONSIDERATION BY THE CHAIR

Any items for consideration by the Chair.

